

# Ingleside Terraces Sundial and Sundial Park

## Article 10 Landmark Designation Recommendation

April 7, 2021



SAN FRANCISCO  
**PLANNING DEPARTMENT**







1912 Map, Ingleside Terraces Home Archives, sfog.us;  
 right: c. 1912-1915, top: SFP22-0125, bottom: SFP22-0128,  
 William E. Worden Glass Plate Negative Collection, SFPL.





OpenSFHistory.org  
outsidelands.org



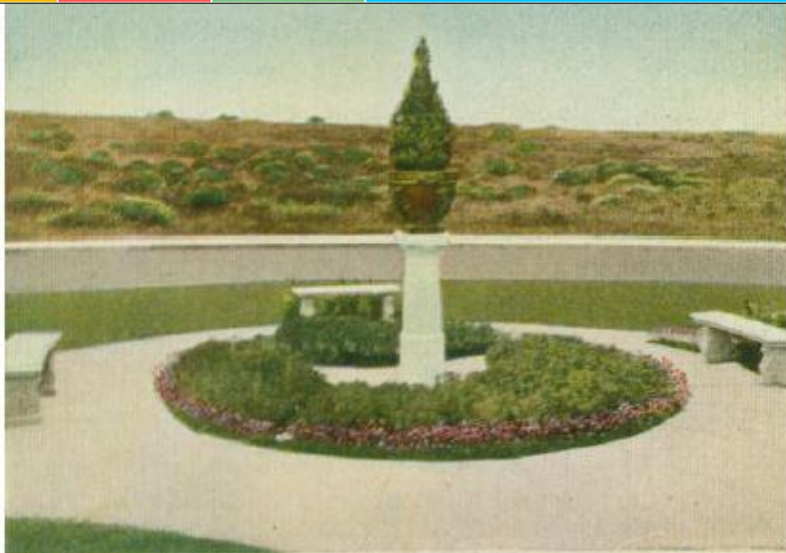












DORIC COLUMN, upon which is represented Childhood, and also Spring Time and Morning, then to the



IONIC COLUMN, upon which is represented Youth, Summer and Noon. Then you reach meridian and the



CORINTHIAN COLUMN, upon which is inscribed Manhood, Autumn, and Afternoon, then pass on to the



TUSCAN COLUMN, last of the classic orders, upon which is represented Old Age, Winter, and Night.









