



日 JAPANTOWN
本 PEACE PLAZA
町 VISION PLAN

**SF PLANNING
HISTORIC PRESERVATION COMMISSION**

APRIL 17, 2019



VISION PLAN MISSION STATEMENT

Lead a community-engaged design process for Peace Plaza so that Japantown will thrive as a culturally rich, authentic, and economically vibrant neighborhood, which will serve as the cultural heart of the Japanese and Japanese American communities for generations to come.

OUTREACH + ENGAGEMENT

FESTIVALS



FOCUS GROUPS



INTERCEPT SURVEYS



DESIGN CHARRETTE



JTF COMMITTEES



COMMUNITY MTGS



COMMUNITY MEETING 1 - RECAP

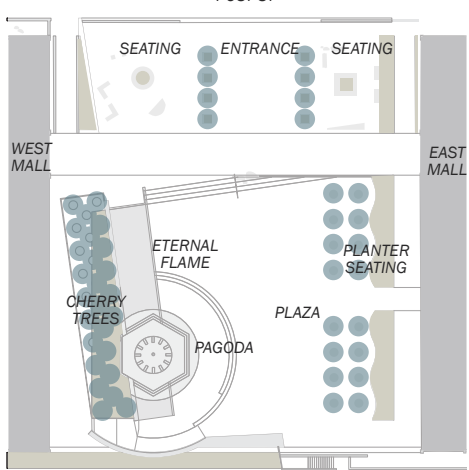
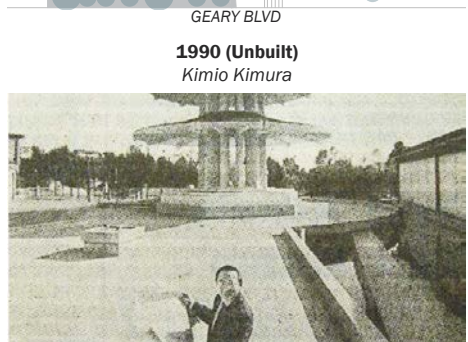
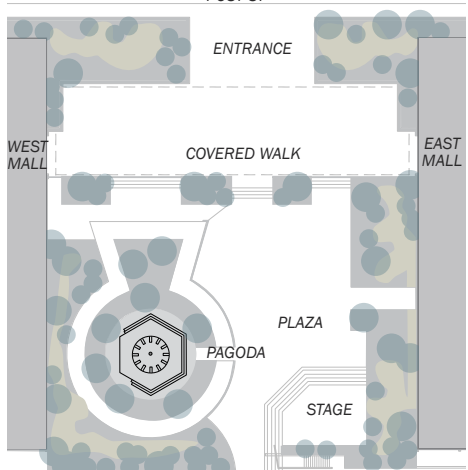
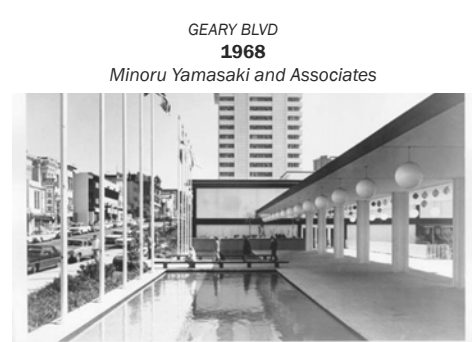
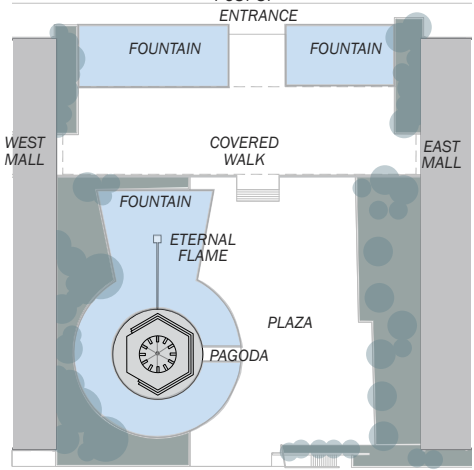
CITY LANDMARK



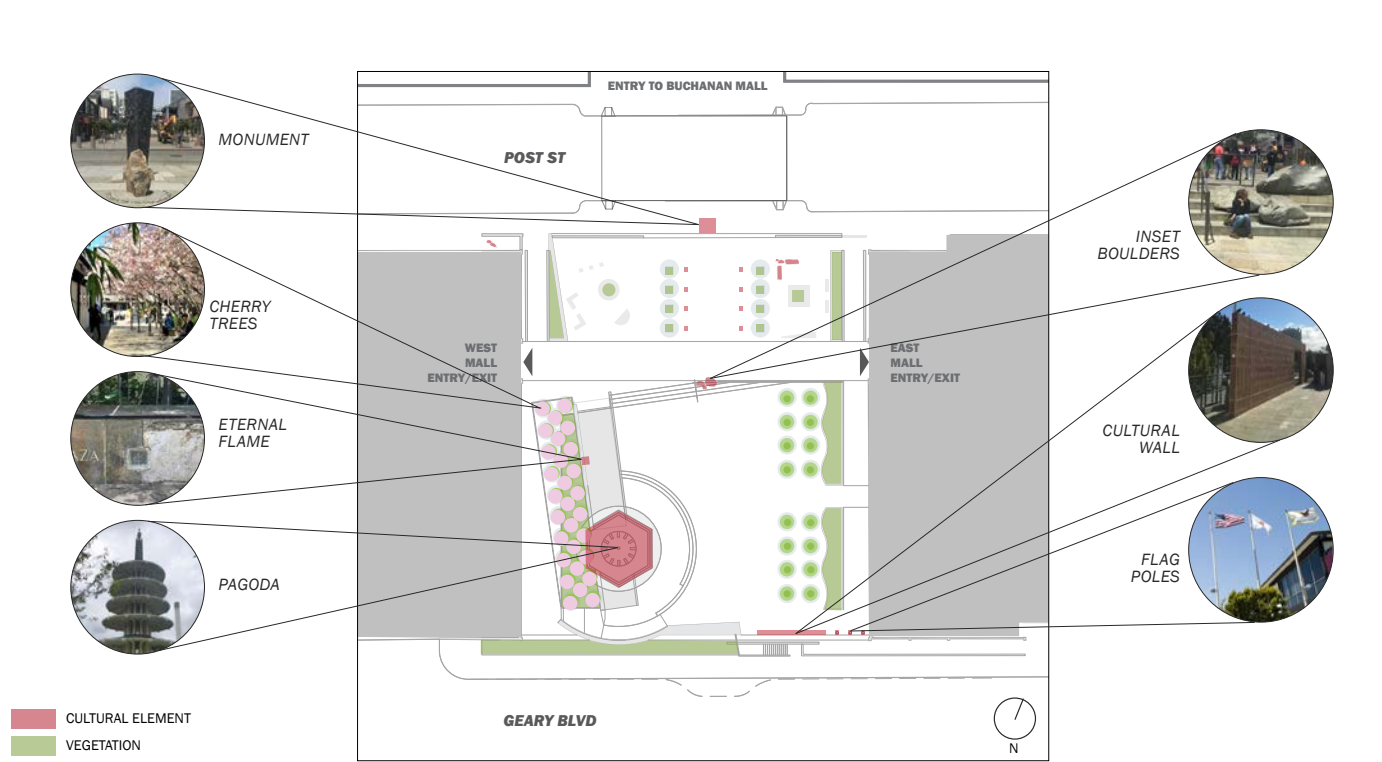
SITE CONTEXT MAP



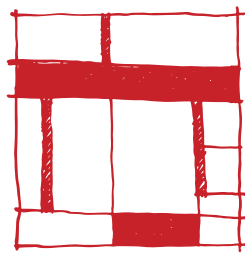
SITE PLANS



EXISTING FEATURES & CULTURAL ELEMENTS



COMMUNITY MEETING 2 - RECAP



FRAME

Angular
Spring
Structure



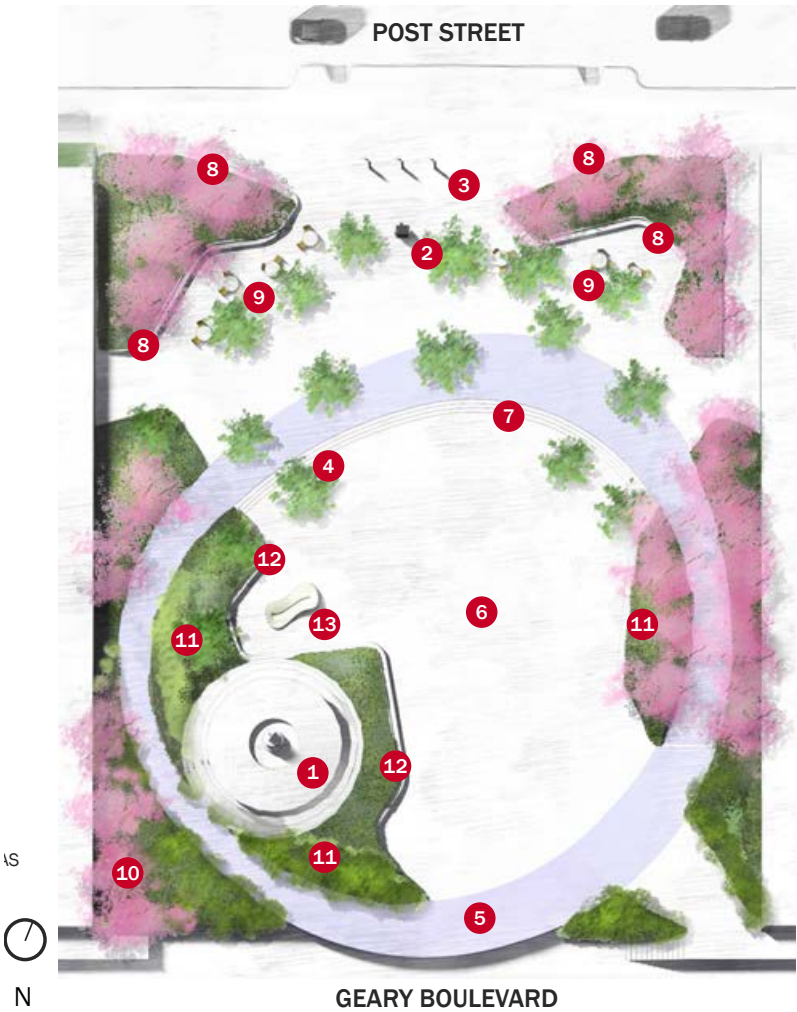
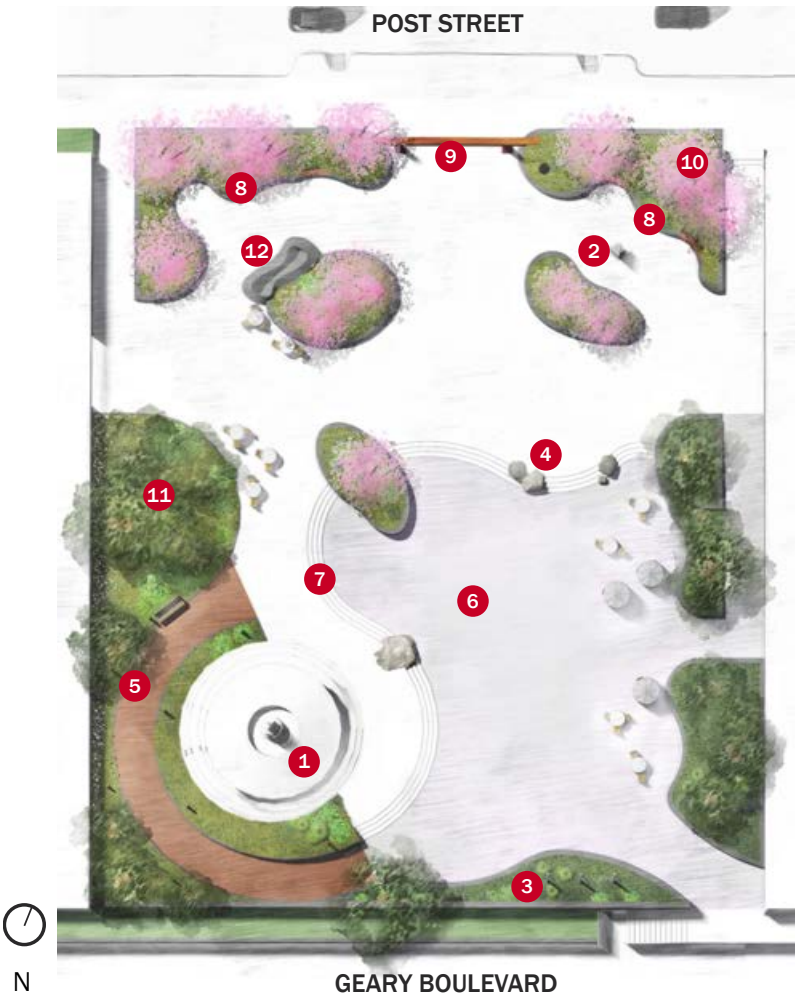
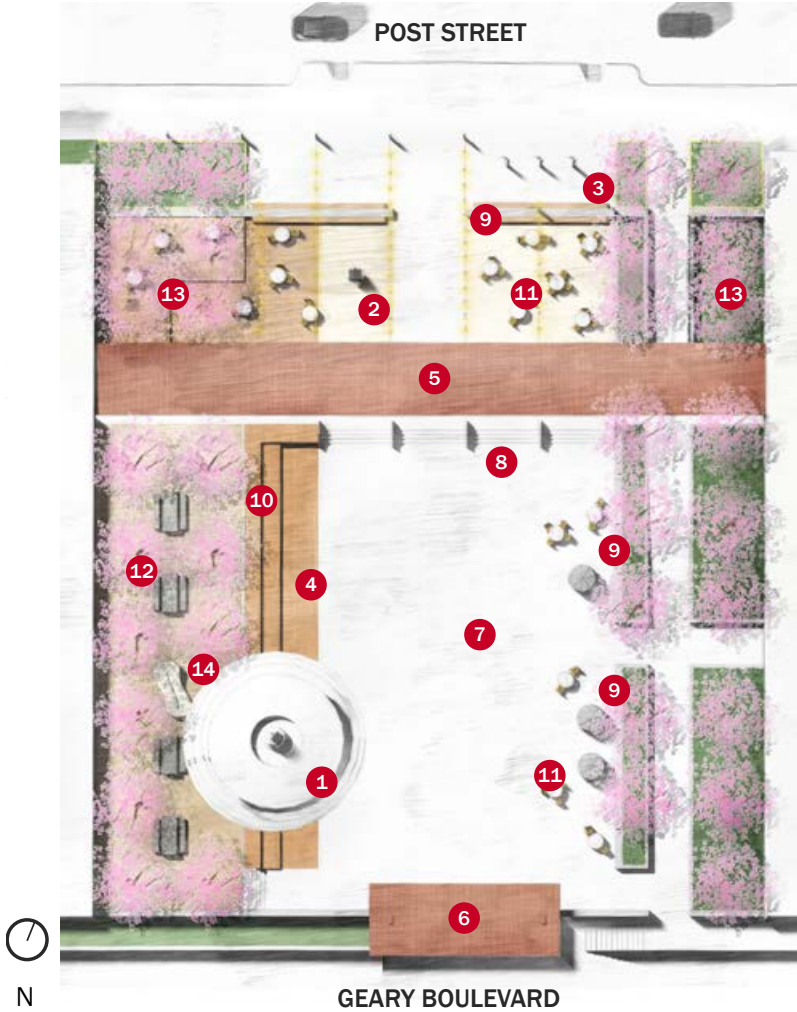
WAVE

Soft
Traditional
Gardens

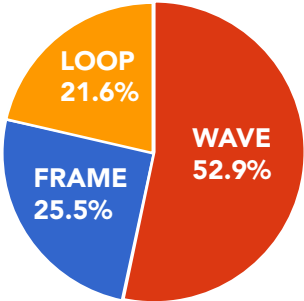


LOOP

Modern
Journey
Hills



Which concept is your most favorite?



SUMMARY OF GOALS:

Make Post Street visually open and inviting
while mitigating wind and providing seating and shade.

Provide a large permanent stage
and seating to accommodate 200-300 people.

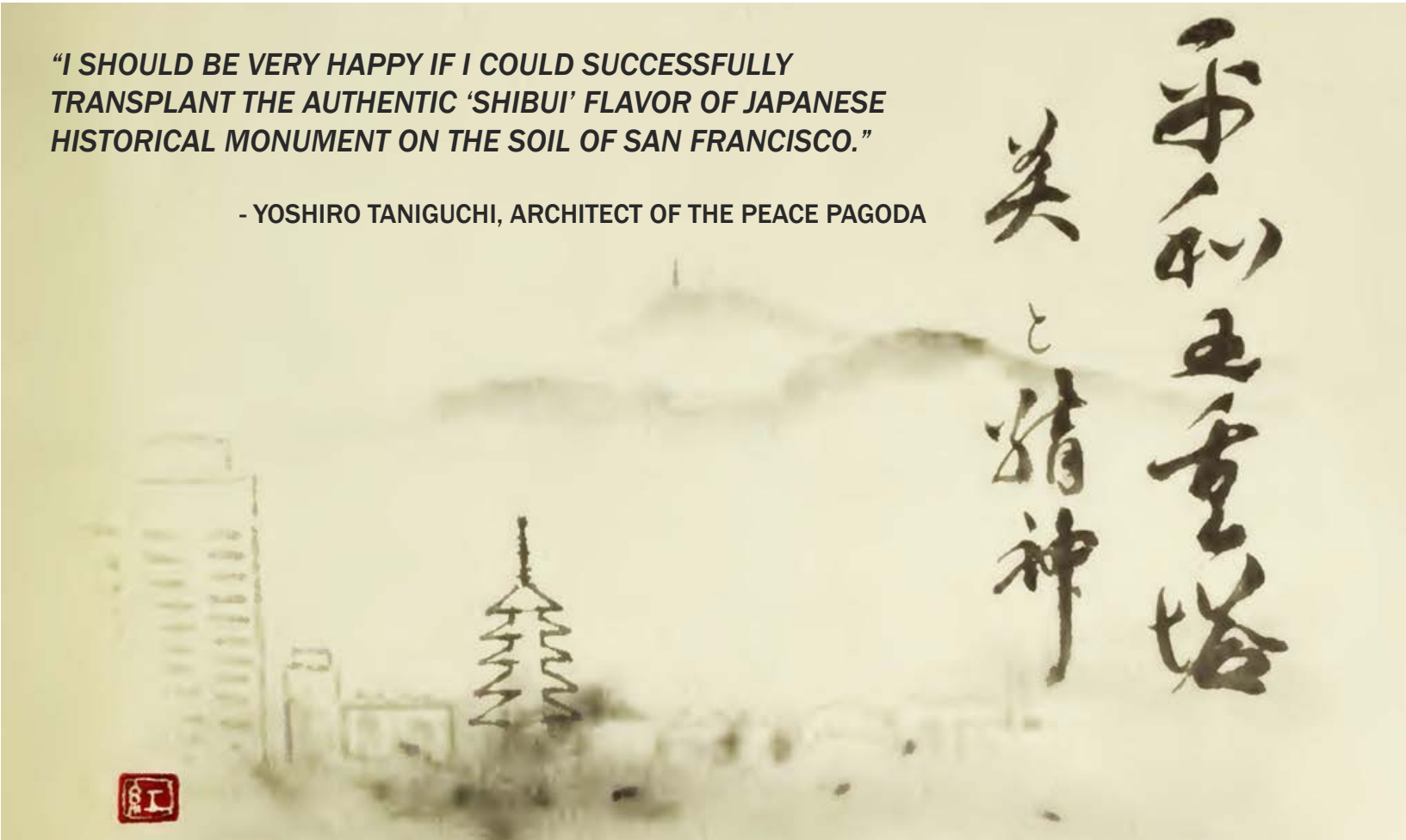
Make Peace Plaza an inviting and playful space
for people of all ages to discover and explore.

Create an inviting visual expression along the Geary Boulevard edge
that draws people into the plaza and mitigates noise levels from Geary Boulevard.

Incorporate significant cultural elements
included in the original design for Japantown Peace Plaza.

SITE CHARACTER

CURVILINEAR DESIGN LANGUAGE REPRESENTATIVE OF THE “WAVE” CONCEPT; TRANQUIL AND SOFT; HIGHLIGHTING THE JAPANESE AESTHETIC OF CRAFT

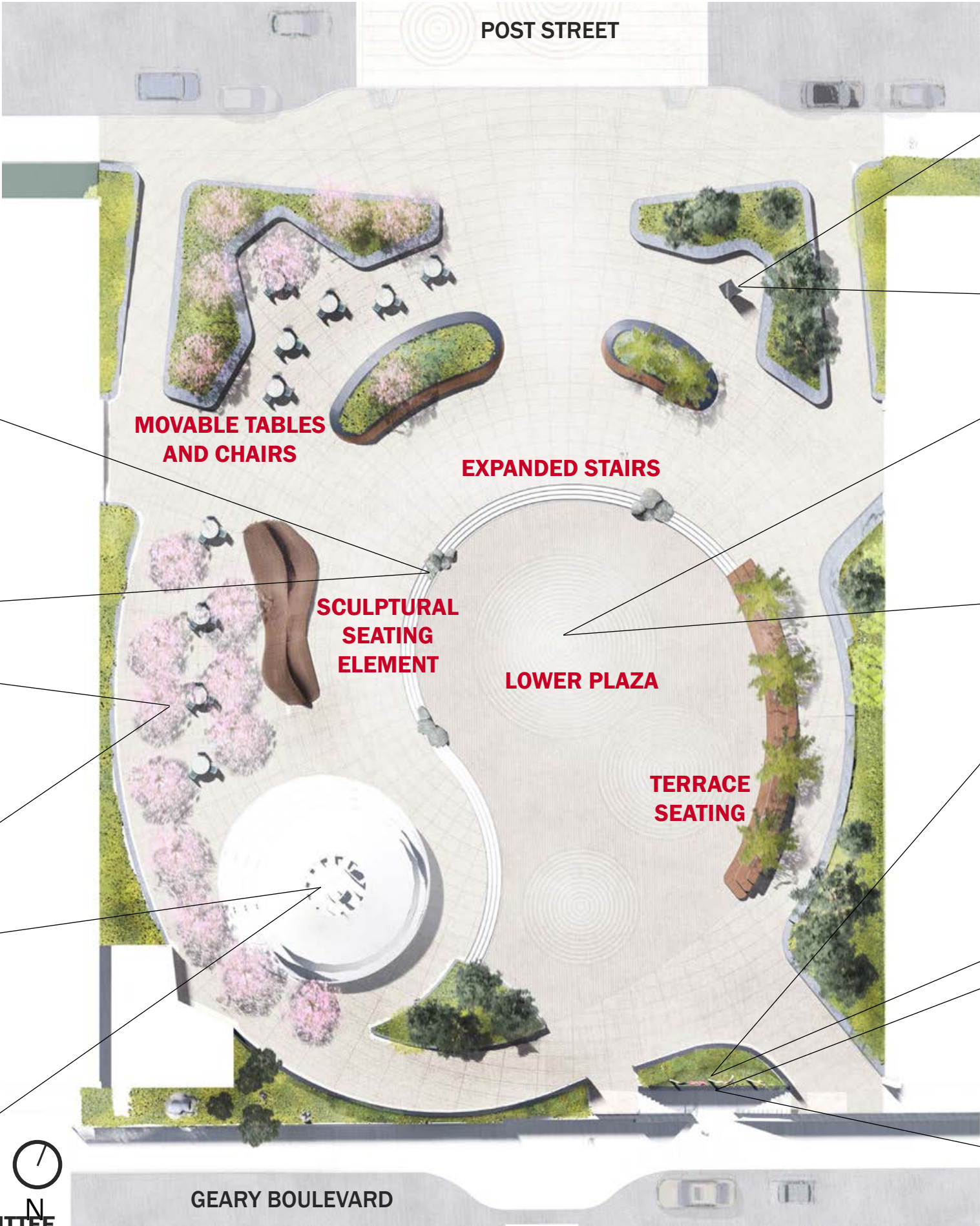


SF PLANNING HISTORIC PRESERVATION COMMITTEE
JAPANTOWN PEACE PLAZA VISION PLAN



APRIL 17, 2013
SAN FRANCISCO RECREATION & PARKS/PUBLIC WORKS

CONCEPT PLAN



INSET BOULDERS

CULTURAL
HERITAGE
MONUMENT

ETERNAL FLAME

FLAGPOLES

CALLIGRAPHY

CHERRY TREES

PEACE PAGODA

3 ZONES

POST STREET TERRACE GOALS:

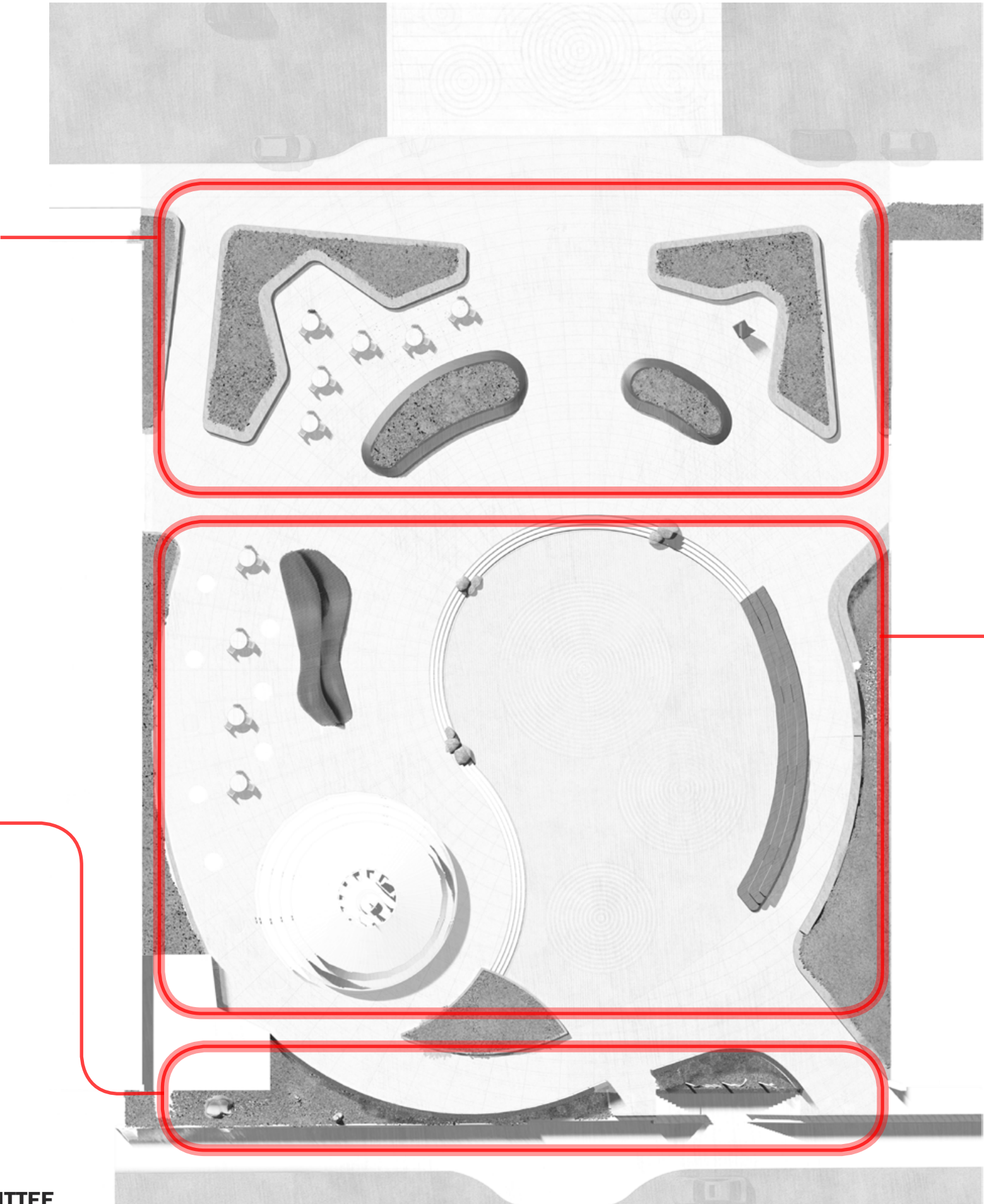
- MAKE POST STREET A VISUALLY OPEN & INVITING THRESHOLD
- MITIGATE WIND FLOWING INTO THE PLAZA
- PROVIDE SEATING & SHADE

GEARY BOULEVARD ENTRY GOALS:

- MAKE THE GEARY EDGE VISUALLY EXPRESSIVE TO DRAW PEOPLE INTO THE PLAZA
- REDUCE STREET NOISE FROM GEARY BOULEVARD

PAGODA TERRACE GOALS:

- PROVIDE A LARGE PERMANENT STAGE & SEATING
- CREATE A PLAYFUL SPACE FOR CHILDREN AND ADULTS TO EXPLORE



POST STREET TERRACE



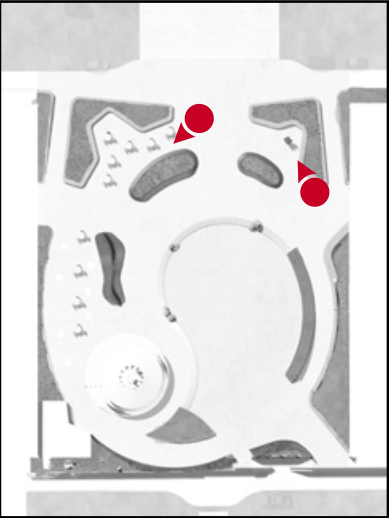
POST STREET TERRACE - TODAY



POST STREET TERRACE



**POST STREET TERRACE
EAST + WEST SIDES**



PAGODA TERRACE



PAGODA TERRACE



RAMP

TERRACE
SEATING

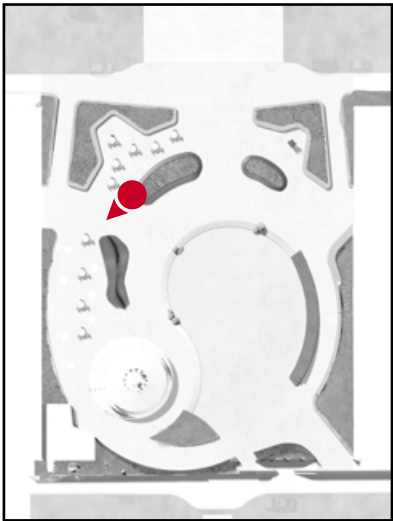
LOWER PLAZA

PEACE PAGODA

SCULPTURAL
SEATING ELEMENT

MOVABLE TABLES
AND CHAIRS

**UPPER PAGODA TERRACE
FLEXIBILITY**



LOWER PAGODA TERRACE



WATER MIRROR

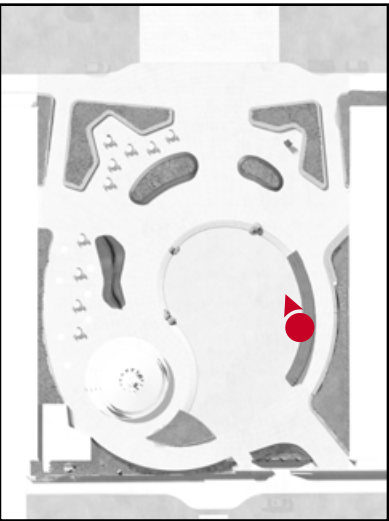


OFF



ON

LOWER PAGODA TERRACE
MIRROR OFF + ON



LOWER PAGODA TERRACE



LOWER PAGODA TERRACE - ETERNAL FLAME



GEARY BOULEVARD ENTRY



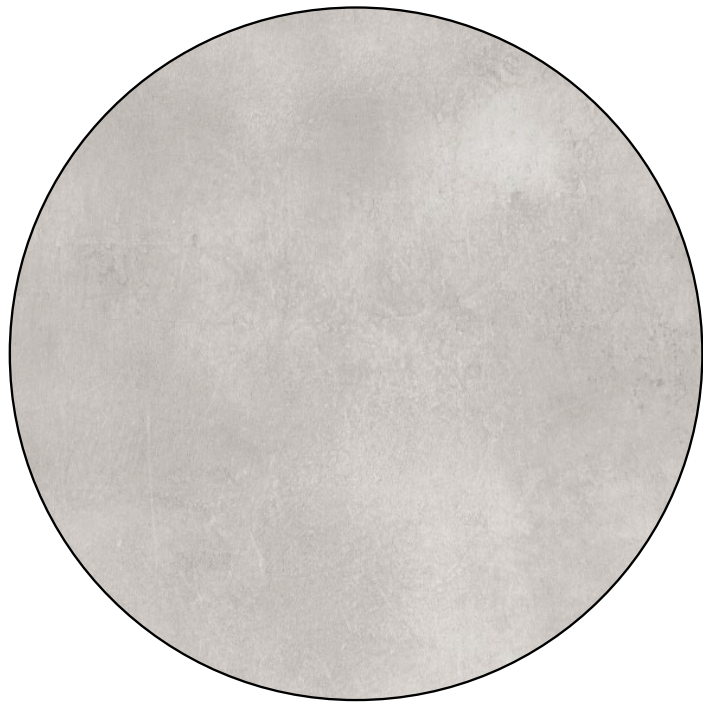
GEARY BOULEVARD ENTRY - TODAY



GEARY BOULEVARD ENTRY - PROPOSED



CONCEPTUAL DESIGN MATERIALITY



CIP CONCRETE
WARM TONES



STONE OR PRECAST CONCRETE
SPECIAL PAVING AREA
LOWER PLAZA

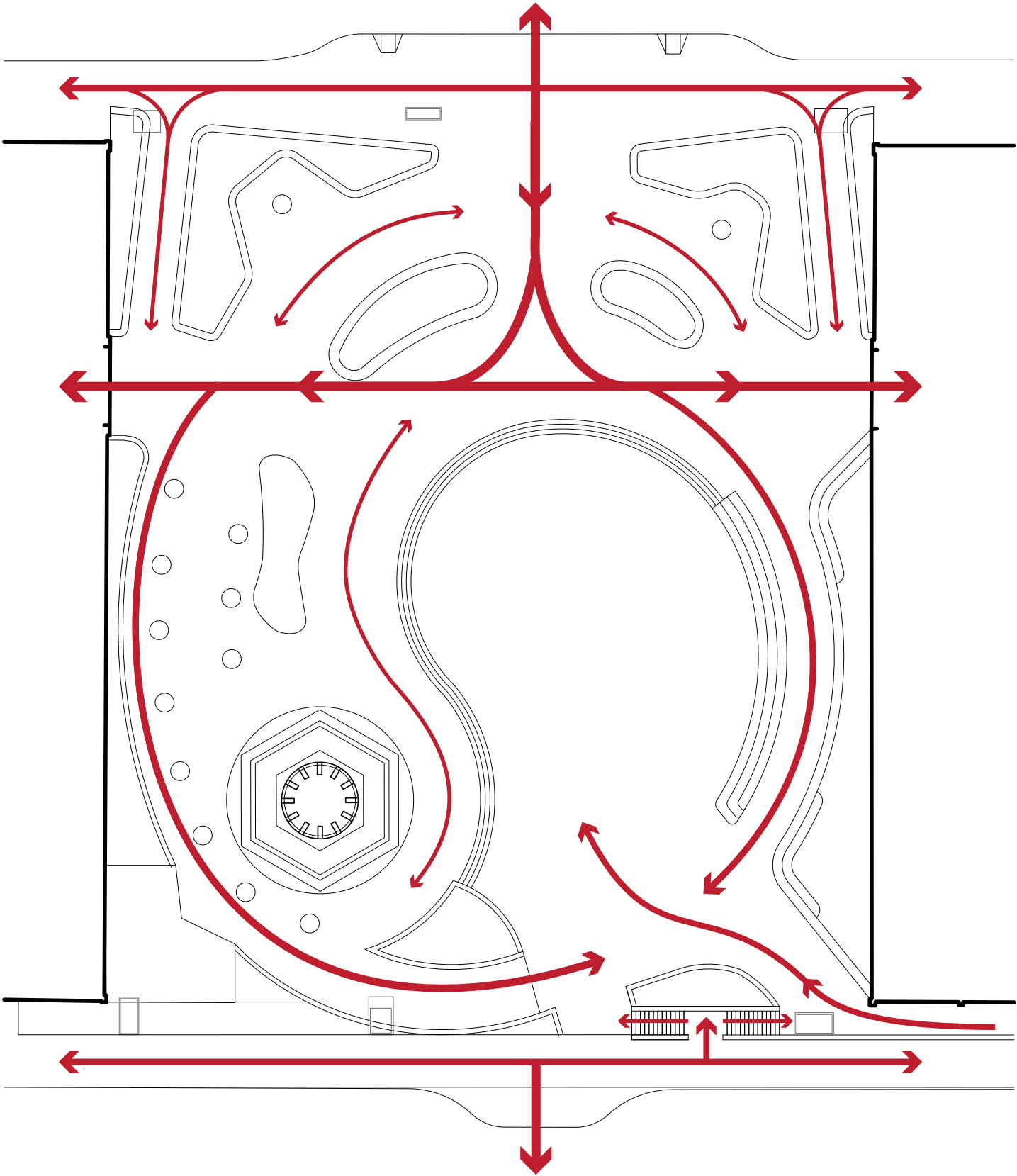


WOOD TERRACE

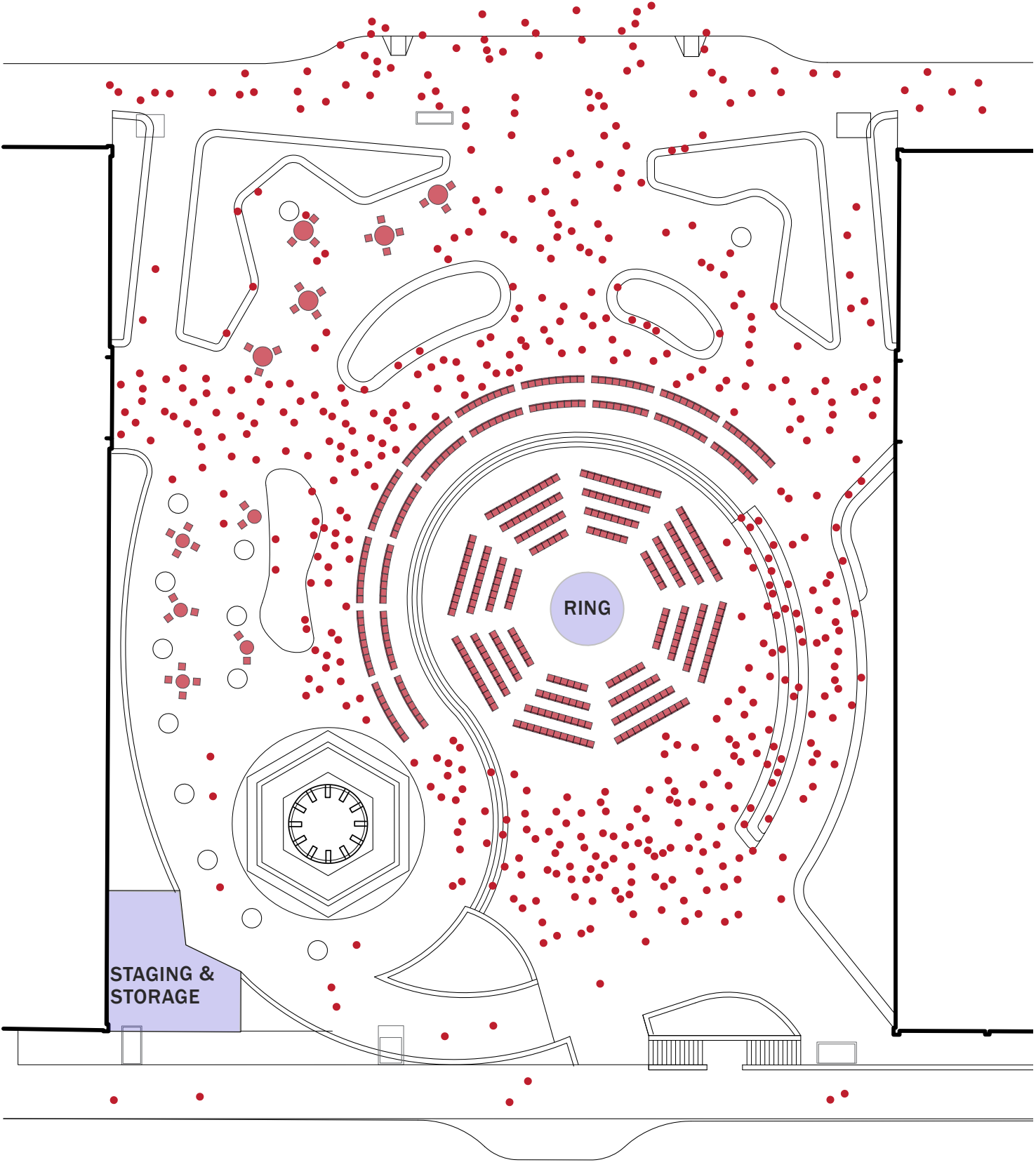


PRECAST CONCRETE OR STONE
POST STREET SEAT WALLS

ACTIVATION: EVERYDAY USE

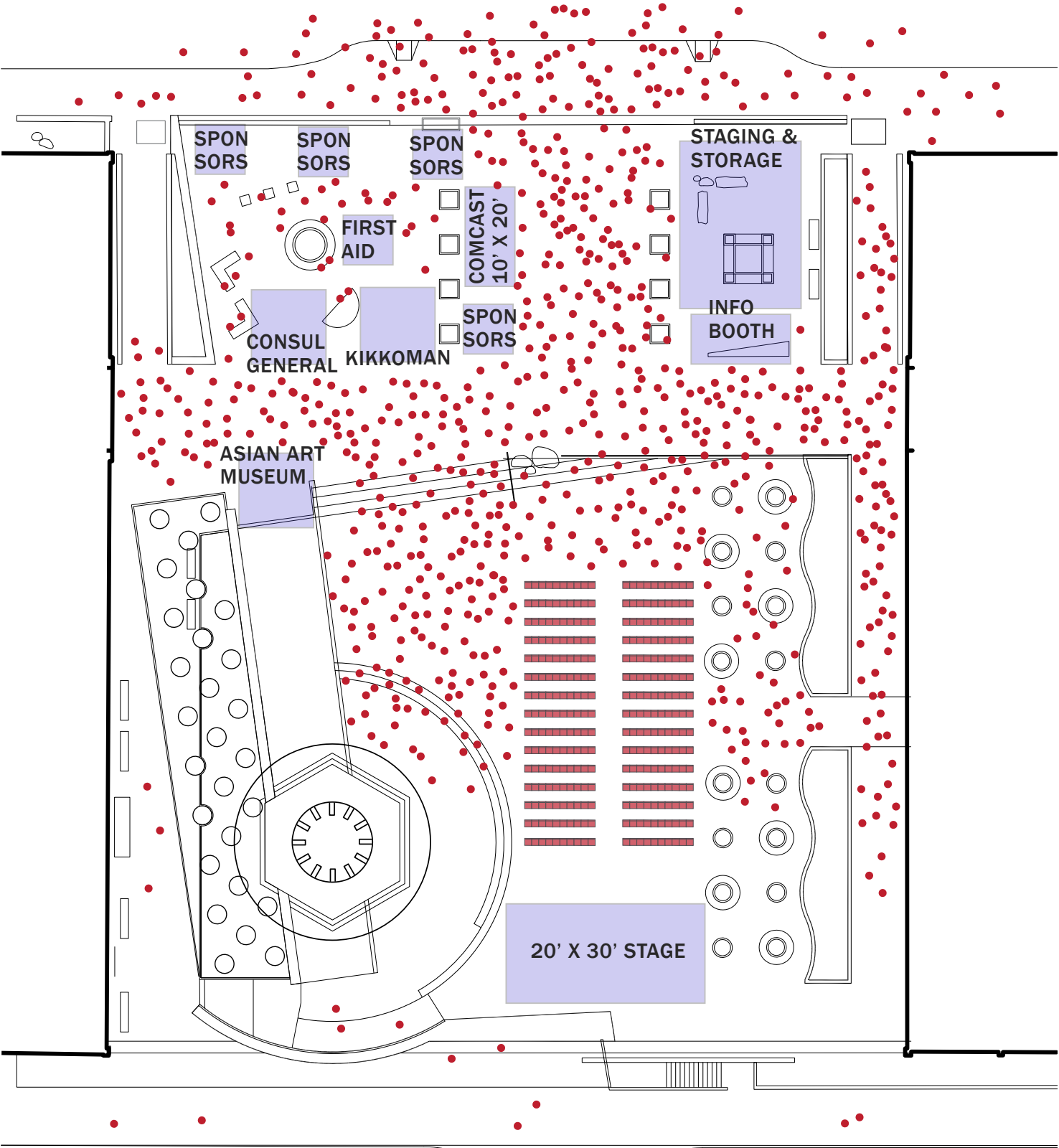


CIRCULATION

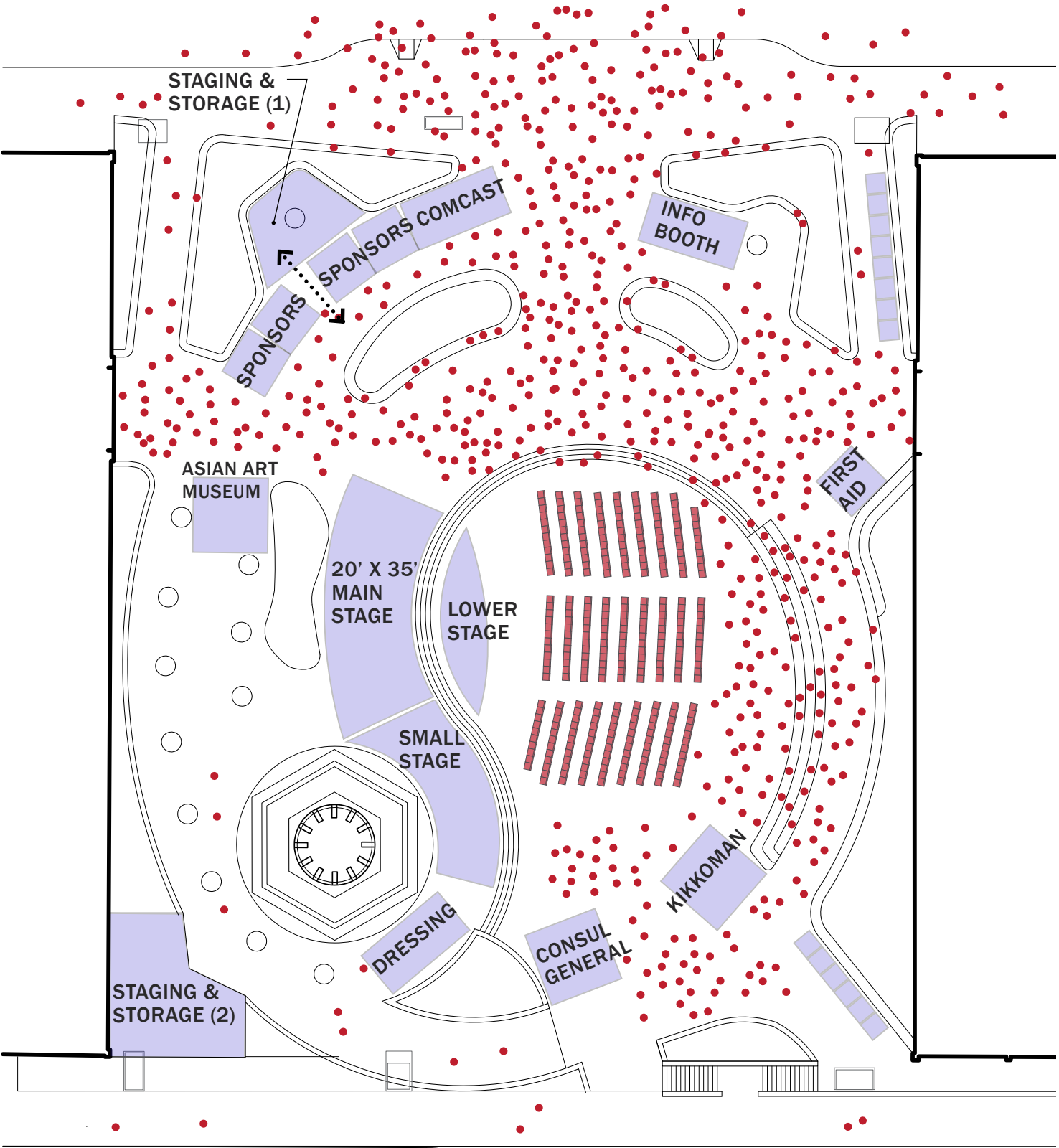


SUMO CHAMPIONS EXHIBITION
458 CHAIRS


ACTIVATION: CHERRY BLOSSOM FESTIVAL



EXISTING PLAZA
200-300 CHAIRS



PROPOSED CONCEPT
320 CHAIRS

An architectural rendering of the Peace Pagoda at night. The pagoda is a multi-tiered structure with a central column and radiating, illuminated eaves. It stands on a tiered stone base. In the foreground, a large, shallow, circular water feature reflects the pagoda and the surrounding lights. Several people are depicted: a person sits on the edge of the water feature in the lower left; others are walking or sitting on the plaza and steps around the pagoda. A row of trees with vibrant pink blossoms is planted behind the pagoda's base. To the right, a modern building with a sign that says "WEST" is visible. The sky is dark with some clouds.

**“...AS NIGHT DRAWS ON, THE WHOLE STRUCTURE WILL
LOOK EXTREMELY PICTURESQUE WITH THE ILLUMINATION
SHEDDING ITS SOFT LIGHT ON THE PAGODA.”**

- YOSHIRO TANIGUCHI, ARCHITECT OF THE PEACE PAGODA