



Looking northwest at City Cemetery from Geary Boulevard and 32nd Ave in 1900 (SFPL)

CITY CEMETERY

LANDMARK DESIGNATION RECOMMENDATION

MAY 4, 2022
HISTORIC PRESERVATION COMMISSION

Kari Hervey-Lentz
Environmental Planner
Kari.lentz@sfgov.org



San Francisco
Planning

CITY CEMETERY LANDMARK TIMELINE

April 20, 2021

Resolution
to initiate
landmark
designation

July 26 & 27, 2021

Land Use
Committee
& BOS
approved
resolution

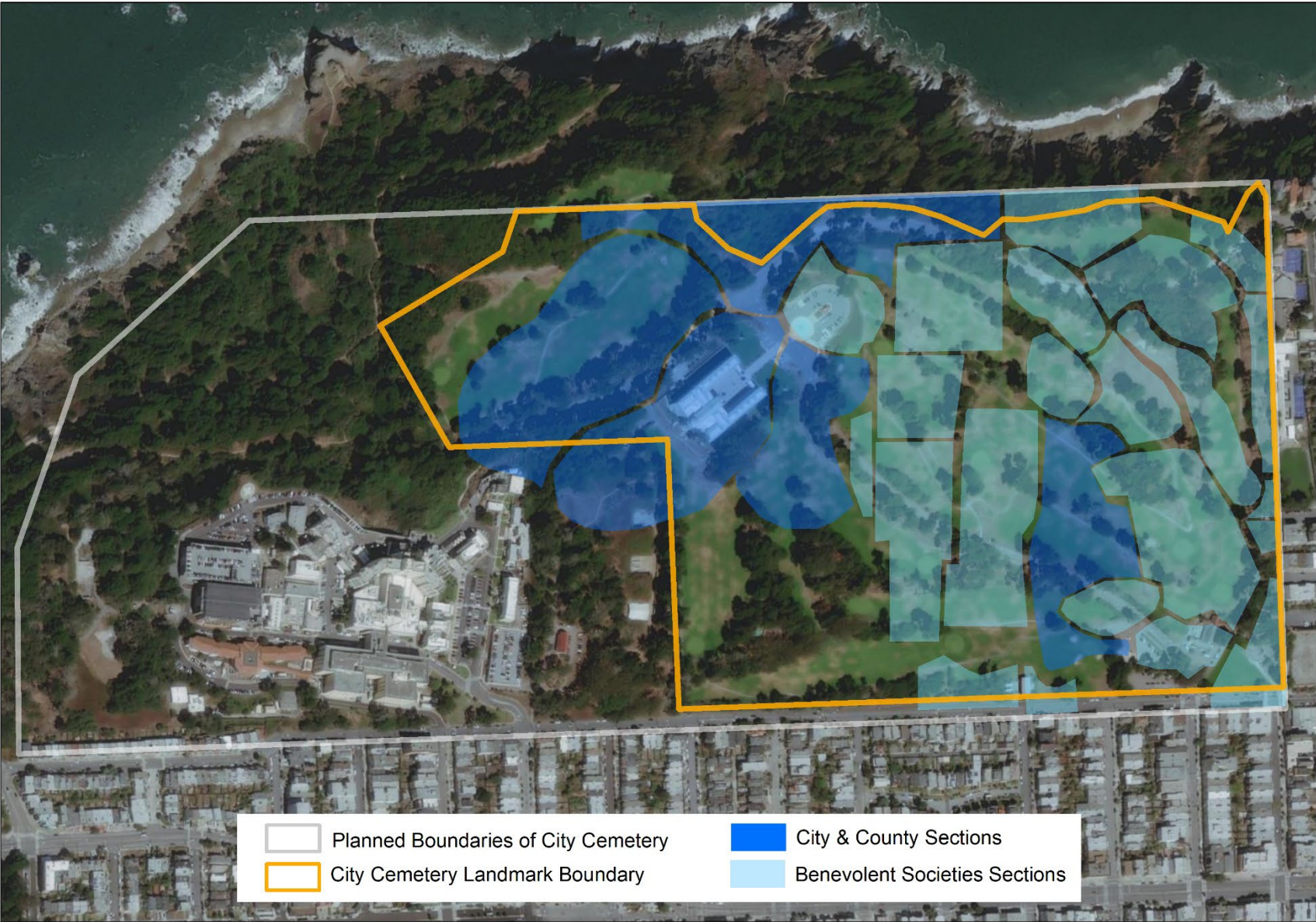
August 4, 2021

Mayor
signed the
initiation
resolution

LOCATION MAP



HISTORICAL CONTEXT



0 120 240 480 Feet



SIGNIFICANCE OF CITY CEMETERY

Period of Significance:	1868 – 1909
Significance Criteria	Statement of Significance
Criteria 1: <i>Event</i>	Early incarnation of social safety nets related to burial of the dead Shifting attitudes regarding cemeteries in urban spaces in the 19 th and early 20 th centuries
Criteria 2: <i>Design/ Construction</i>	Extant cemetery structures embody distinctive architectural characteristics of late 19th century funerary design
Criteria 3: <i>Information Potential</i>	Buried remnants yield information important to the city's history

CHARACTER

DEFINING

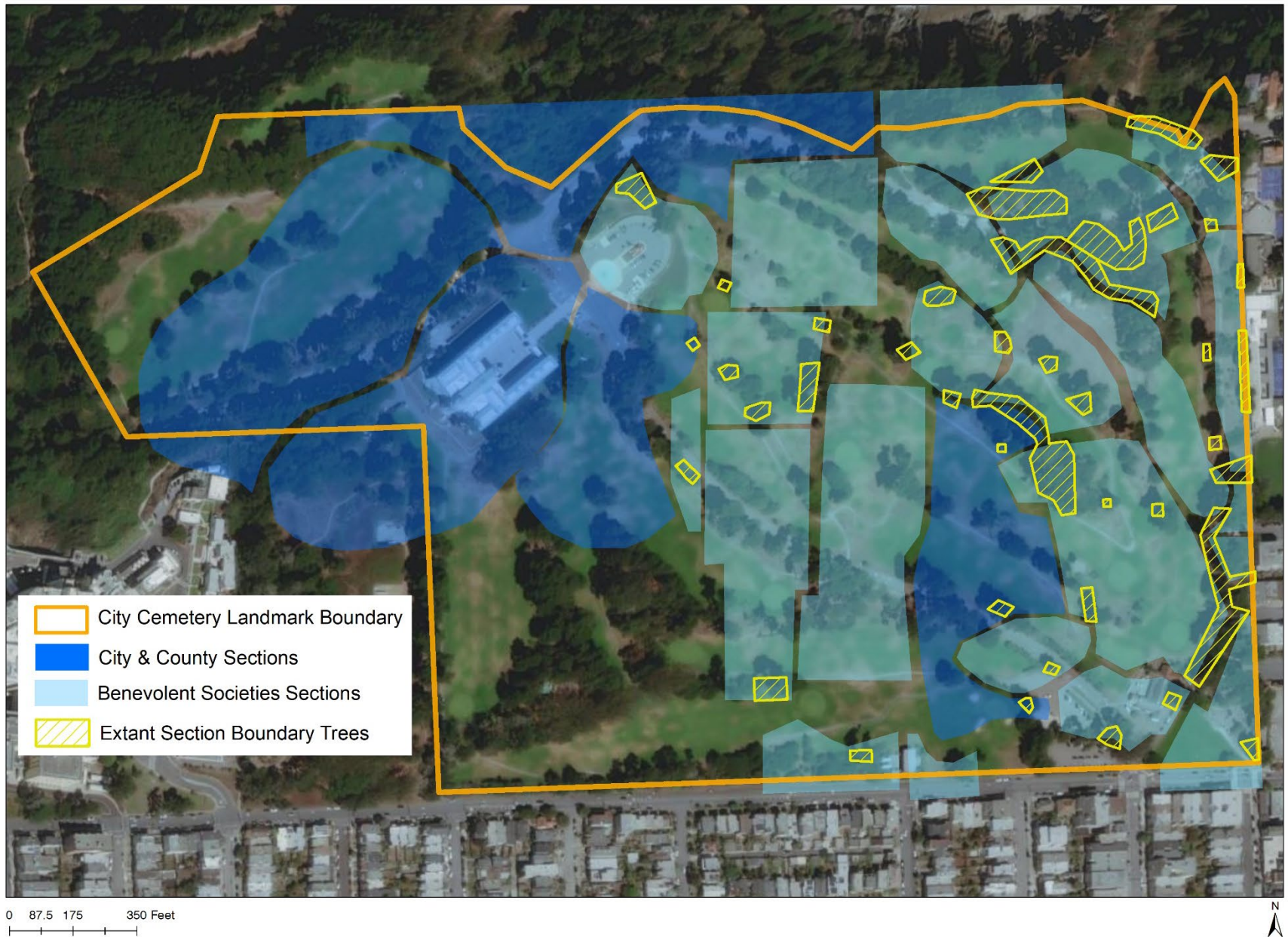
FEATURES

Topography and setting



Looking northwest at City Cemetery from Geary Boulevard and 32nd Ave in 1900 (SFPL)

Trees associated with cemetery section boundaries



Cemetery operational infrastructure



Standing and visible mortuary structures

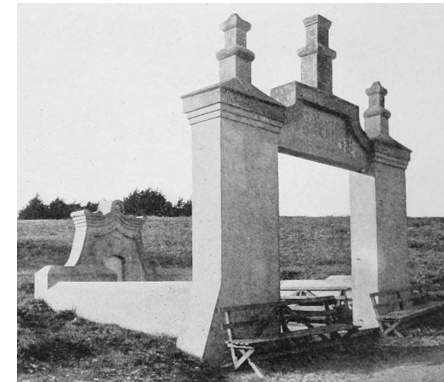


Standing structures: Kong Chow monument



厝旅州岡

Alex Ryder 2018



SF Chamber of Commerce 1914

Standing structure: Seamen's obelisk



Alex Ryder 2018



Exhumation pits



California Historical Society

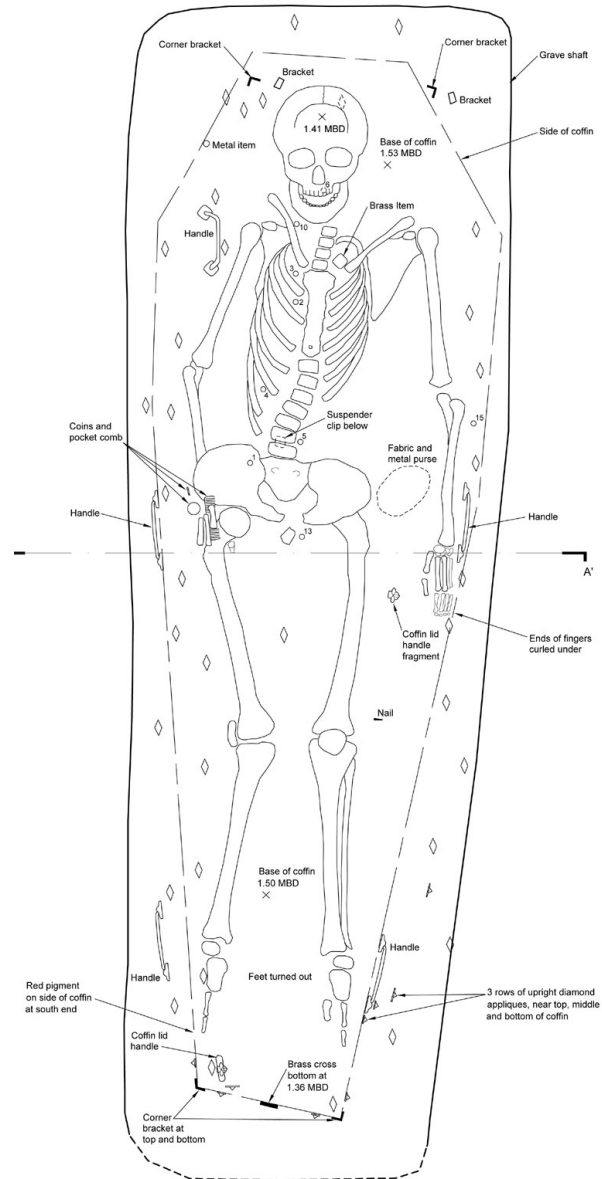


-  City Cemetery Landmark Boundary
-  City & County Sections
-  Benevolent Societies Sections
-  Various Chinese Associations

0 87.5 175 350 Feet



Human remains



Mortuary furniture and grave goods



Coffin



Curbing



Tombstone fragment



Shoe



Chinese name brick



Coffin Hardware



Rosary



Looking northwest at City Cemetery from Geary Boulevard and 32nd Ave in 1900 (SFPL)

THANK YOU



San Francisco
Planning

Kari Hervey-Lentz
Environmental Planner
Kari.lentz@sfgov.org

www.sfplanning.org