



# SAN FRANCISCO EAGLE BAR

## LANDMARK DESIGNATION RECOMMENDATION

MAY 19, 2021  
HISTORIC PRESERVATION COMMISSION

**Alex Westhoff, AICP**  
Senior Preservation Planner  
Alex.Westhoff@sfgov.org



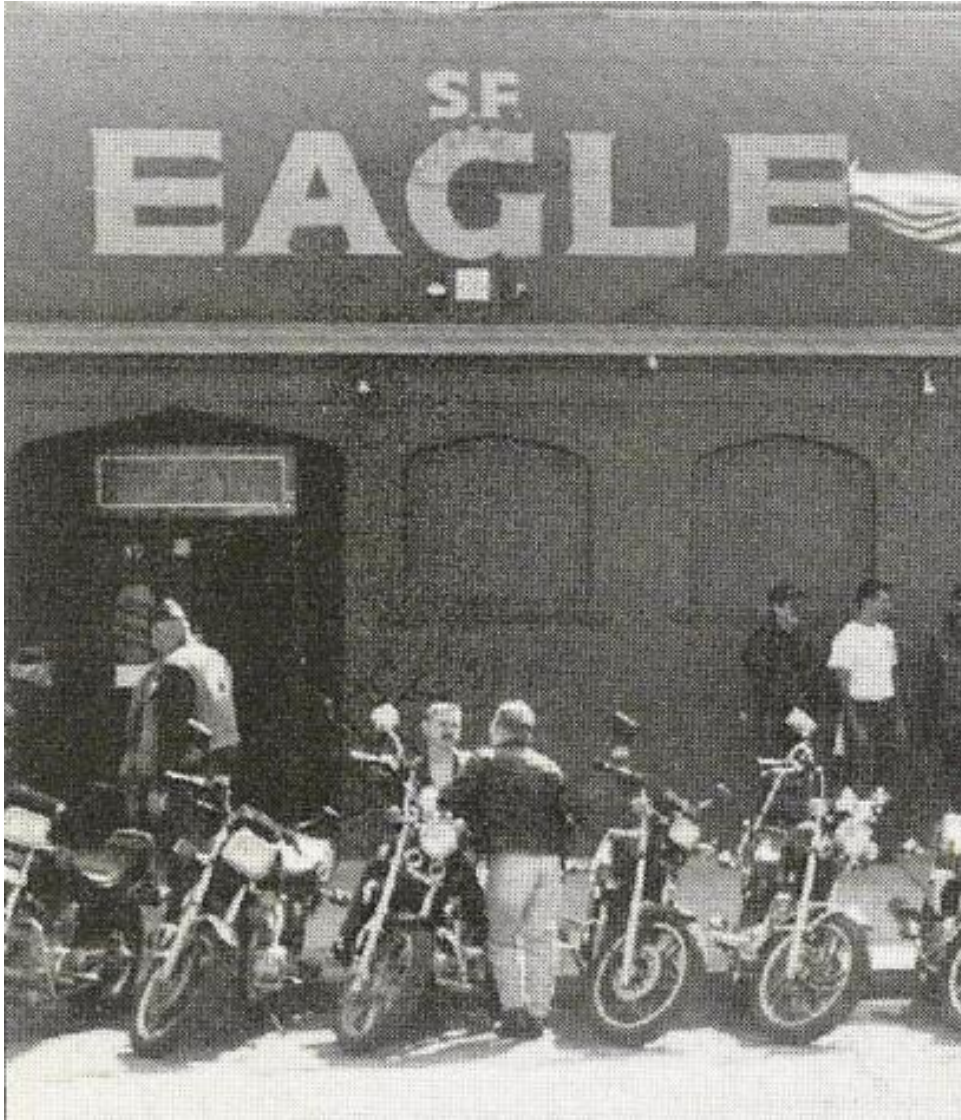
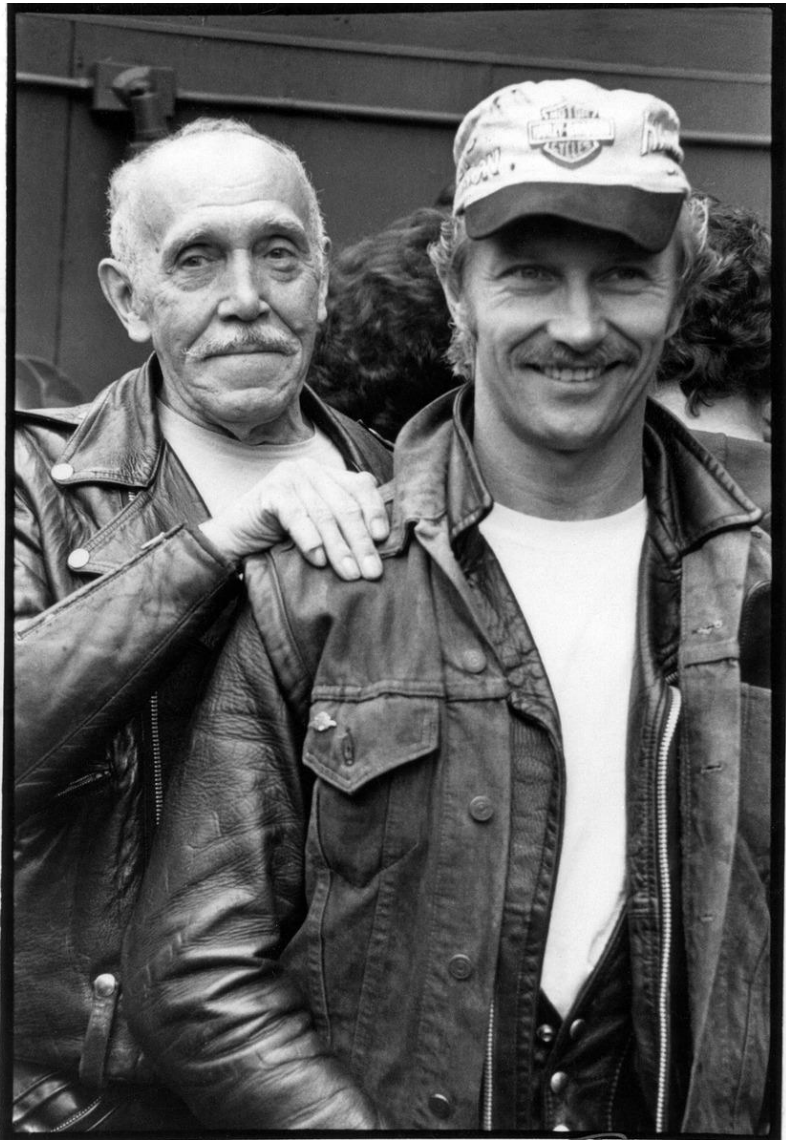


Photo credits. Left: Unknown Top Right: Gay Highwaymen, Bottom Right: Google Maps



*S.F. Eagle Patio*

*- Pruzan*

SECOND ANNUAL  
**GODFATHER'S DAY**  
**BEER BUST**  
**&**  
**AUCTION**

Hosted by the S.F. Eagle and Mr. Tony Trevizo

**SUNDAY**  
**JUNE 16**  
**3 - 7 PM**

ON THE PATIO OF THE  
**S.F. EAGLE**

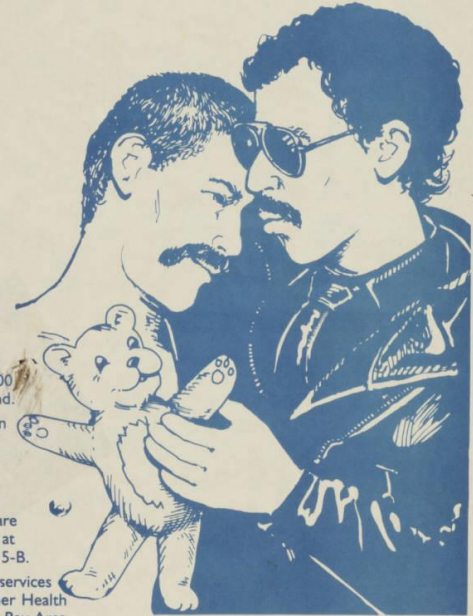
**\$10<sup>00</sup>** Donation  
 Includes Beer & Food

This is our Second Annual event and through the generosity of numerous merchants, we raised \$4,300.00 for the Godfather Service Fund.

This year our recipient is again the Godfather Service Fund.

The G.S.F. is under the auspices of the S.F. Tavern Guild Foundation. The fund presently provides personal care items to people with A.I.D.S. at San Francisco General, Ward 5-B.

Its plans are to extend these services to people with A.I.D.S. at other Health Care facilities throughout the Bay Area.



The organizers are requesting merchandise donations to be auctioned. These donations are tax deductible. If your business is interested, please contact Tony Trevizo at 661-5039 or 558-8100

Produced by Tony Trevizo • Typesetting by Monte Reddick • Graphic Design & Production by Daniel Ross • Funding for graphics by Randal West, West Graphics

JUL 1985  
 JUL 1985

# CRITERION 1 : EVENTS

## Subthemes

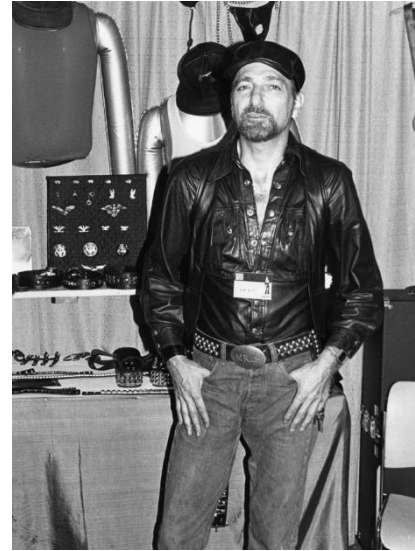
(Citywide Historic Context Statement for LGBTQ History in San Francisco):

- Evolution of LGBTQ Enclaves and Development of New Neighborhoods (1960s to 1980s)
- Gay Liberation, Pride, and Politics (1960s to 1990s)
- Building LGBTQ Communities (1960s to 1990s)
- San Francisco and the AIDS Epidemic (1981 to 1990s)

# CRITERION 2 : PEOPLE



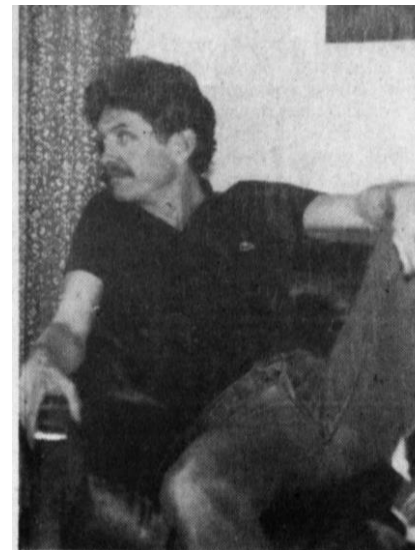
**Marcus Hernandez**  
aka Mister Marcus  
Leather columnist,  
photographer and MC  
(1932-2009)



**Alan Selby**  
aka the Mayor of Folsom Street  
Founder of Mr. S. Leather  
(1929 – 2004)



**Terry Thompson**  
Eagle manager 1984-1994  
(1940-1994)

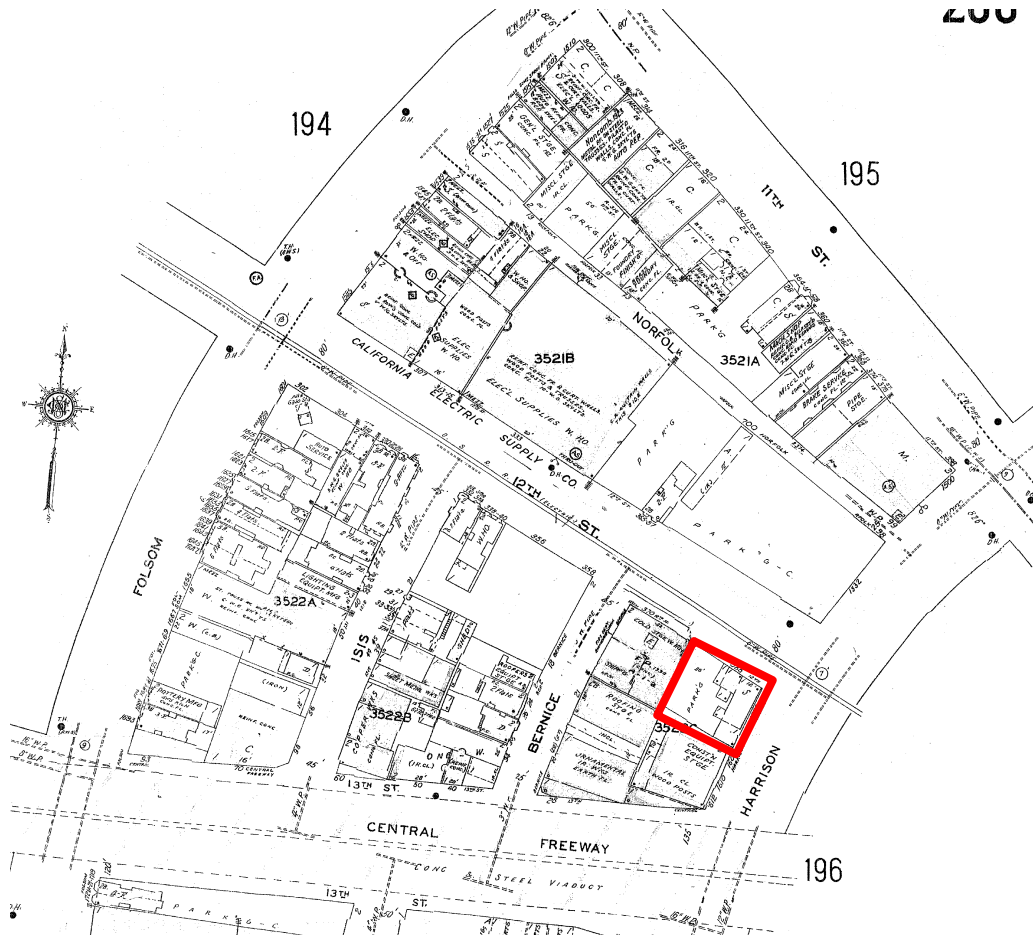


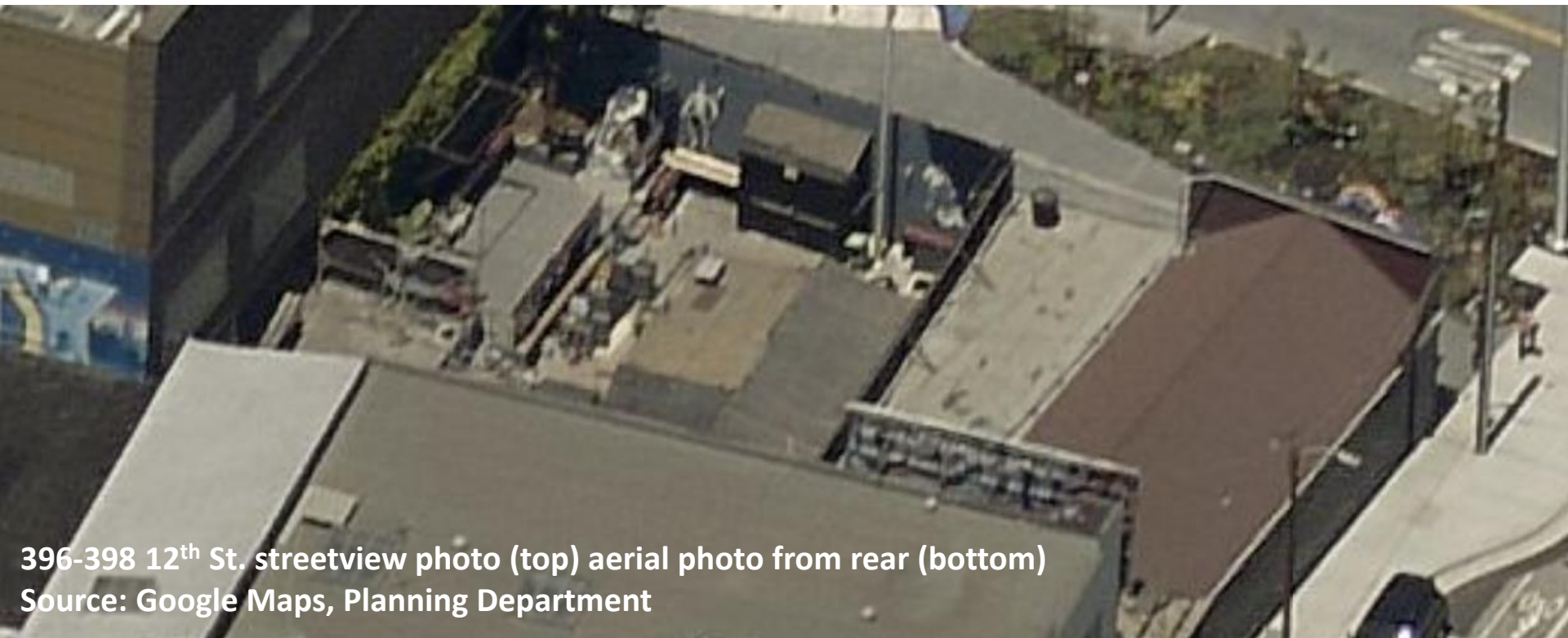
**Robert Uyvari**  
artist/designer  
(1941-1986)

396-398 12<sup>th</sup> St.

Sanborn Map (1998) and Aerial Photo.

Source: Planning Department





396-398 12<sup>th</sup> St. streetview photo (top) aerial photo from rear (bottom)  
Source: Google Maps, Planning Department

THANK YOU



**San Francisco  
Planning**

**Alex Westhoff**  
Senior Preservation Planner  
San Francisco Planning

[alex.westhoff@sfgov.org](mailto:alex.westhoff@sfgov.org)  
[www.sfplanning.org](http://www.sfplanning.org)