



TROCADERO CLUBHOUSE LANDMARK DESIGNATION RECOMMENDATION

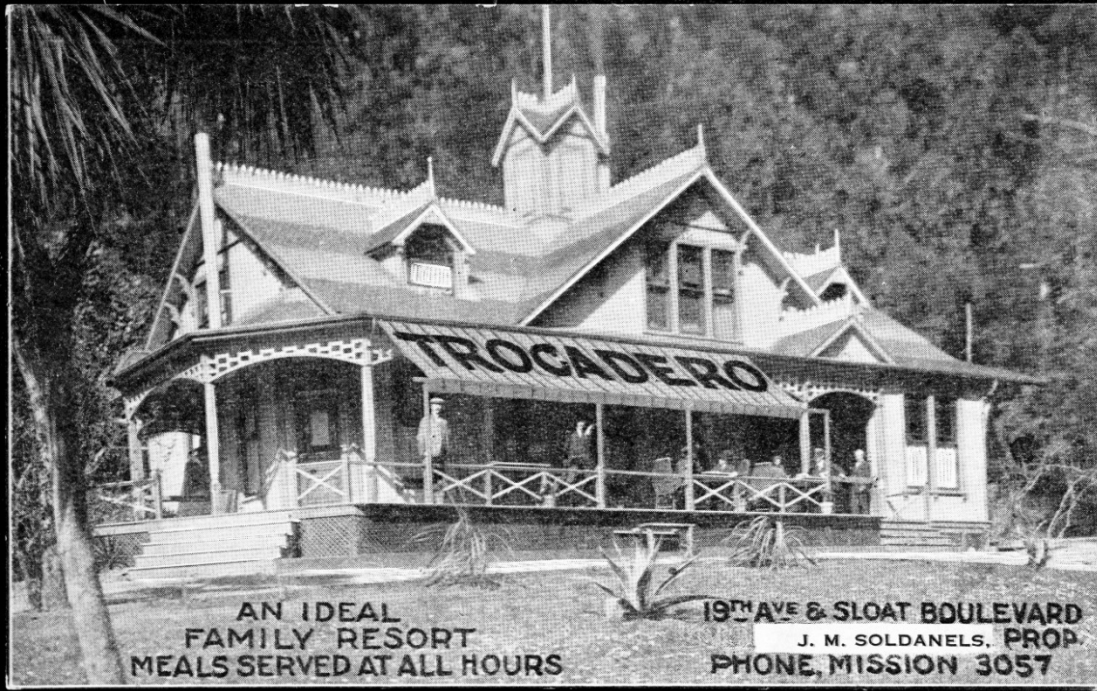
SEPTEMBER 15, 2021
HISTORIC PRESERVATION COMMISSION

Source: San Francisco Recreation and Park Department

M. Pilar LaValley, LEED AP
Senior Preservation Planner
pilar.lavalley@sfgov.org



San Francisco
Planning



Trocadero Clubhouse, c. 1910 (top) and c. 1930 (right).
Source: Western Neighborhoods Project



Trocadero Clubhouse, 1936
 South façade (above left)
 Bar Room (below left)



Source: Historic American Building Survey, CA-119.
 Photographer, Robert W. Kerrigan. Accessed via
<https://www.loc.gov/resource/hhh.ca0738.photos?st=gallery>

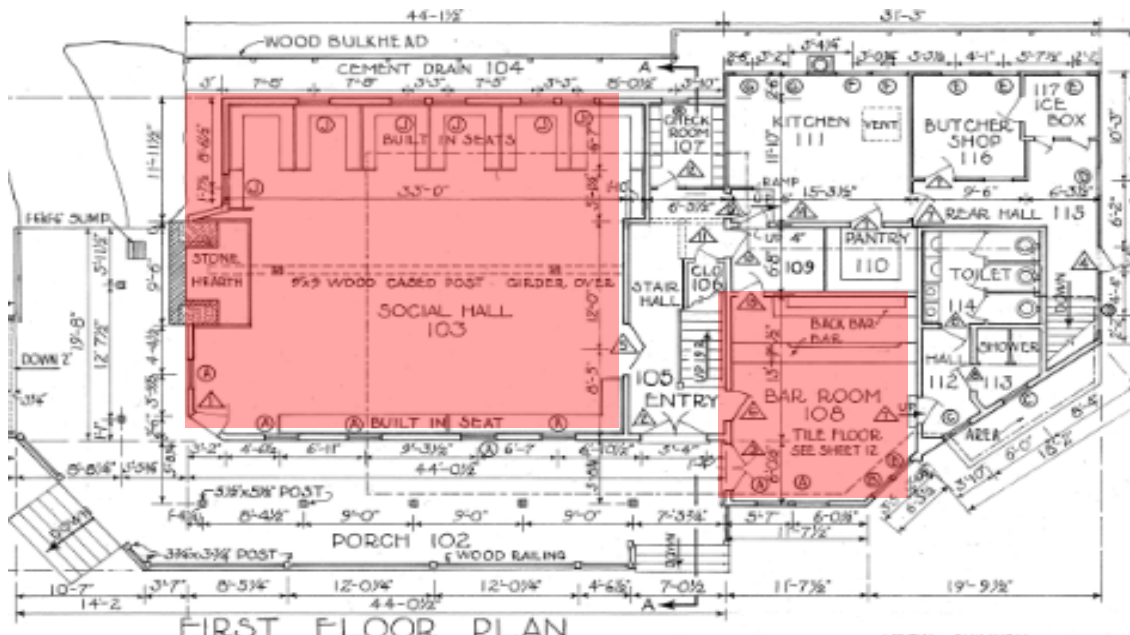


Trocadero Clubhouse, 2020
Roof with cupola and gables (above)
South and west façades (below left)

Source: San Francisco Recreation and Park
Department



Landmark Boundary:
Trocadero Clubhouse, boundary of the landmark designation shown in red.



Significant Interior Rooms: Trocadero Clubhouse, First Floor, interior spaces identified as character-defining features of the landmark are shaded red.

Note: base plan is from measured drawings prepared in 1936, certain details including the built-in seats depicted in Social Hall and layout of the back-of-house spaces are no longer extant or have been altered.



THANK YOU



**San Francisco
Planning**

M. Pilar LaValley, LEED AP
Senior Preservation Planner
pilar.lavalley@sfgov.org

www.sfplanning.org