

SAN FRANCISCO
RECREATION
& PARKS

Photo credit.



SHIPWRIGHT'S COTTAGE CERTIFICATE OF APPROPRIATENESS

HPC APPROVAL REQUEST
APRIL 7, 2021

SAN FRANCISCO RECREATION AND PARKS DEPARTMENT
GGN LANDSCAPE ARCHITECTS AND JENSEN ARCHITECTS
PAGE & TURNBULL, PRESERVATION ARCHITECT



Historic primary (southeast) facade from ca.1920. Source: VerPlanck Historic Preservation Consulting.

PREVIOUS STUDIES COMPLETED:

2008: San Francisco Landmark Nomination (VerPlanck Consulting and Erin Farrell with the India Basin Neighborhood Association)

2008: Shipwright's Cottage designated as San Francisco Landmark #260

2014-2015: Shipwright's Cottage Feasibility Study

2015-2017: India Basin Historic Resource Evaluation (HRE) for Environmental Impact Report (EIR)



Existing primary (southeast) facade, viewed facing northwest. Photograph by Stephen Schafer, 2020.

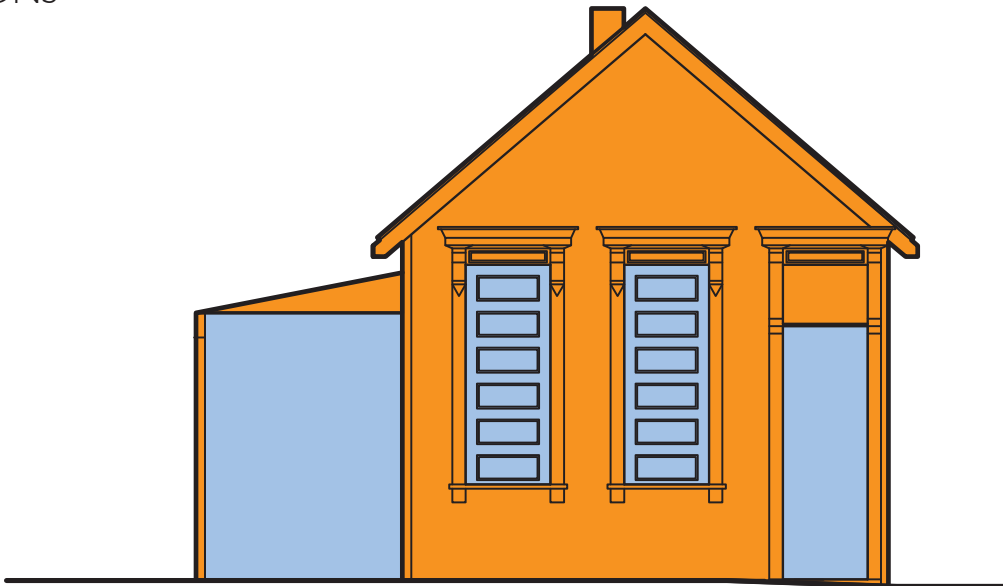
2017: India Basin Preservation Alternatives Study

2019-2020: 900 Innes Section 106 Technical Report

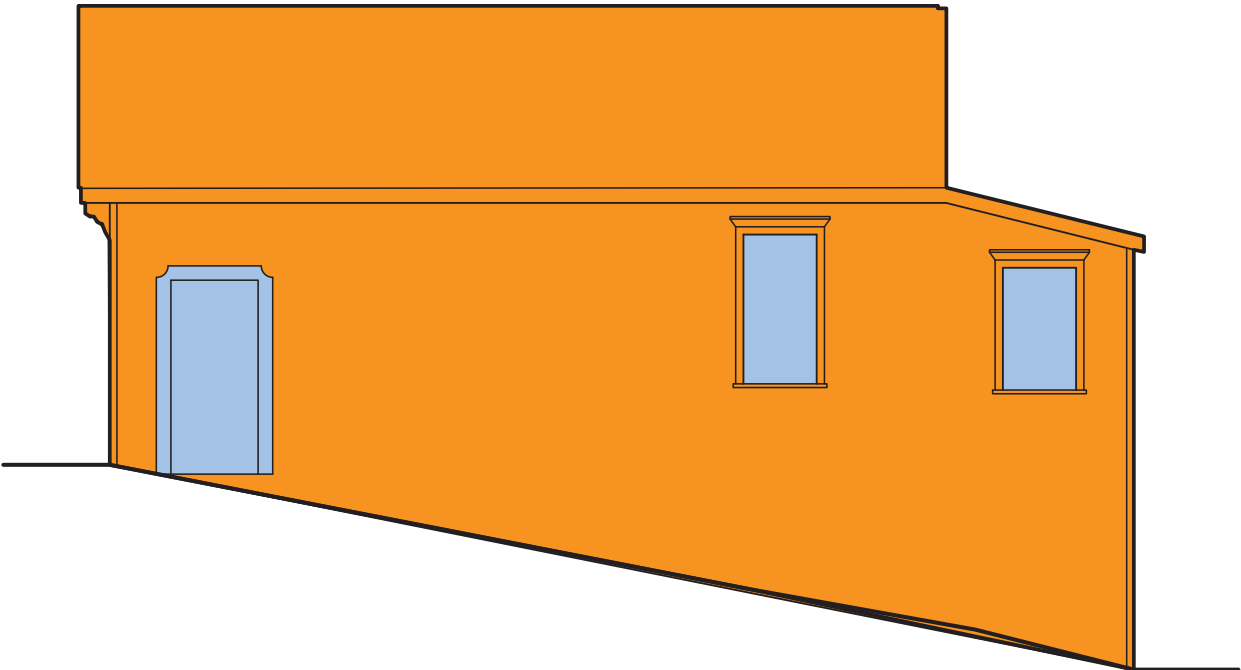
2020: HABS Report, Drawings, and Photographs (CEQA Mitigation Measure)

2020: Historic Preservation Plan (HPP) (CEQA Mitigation Measure)

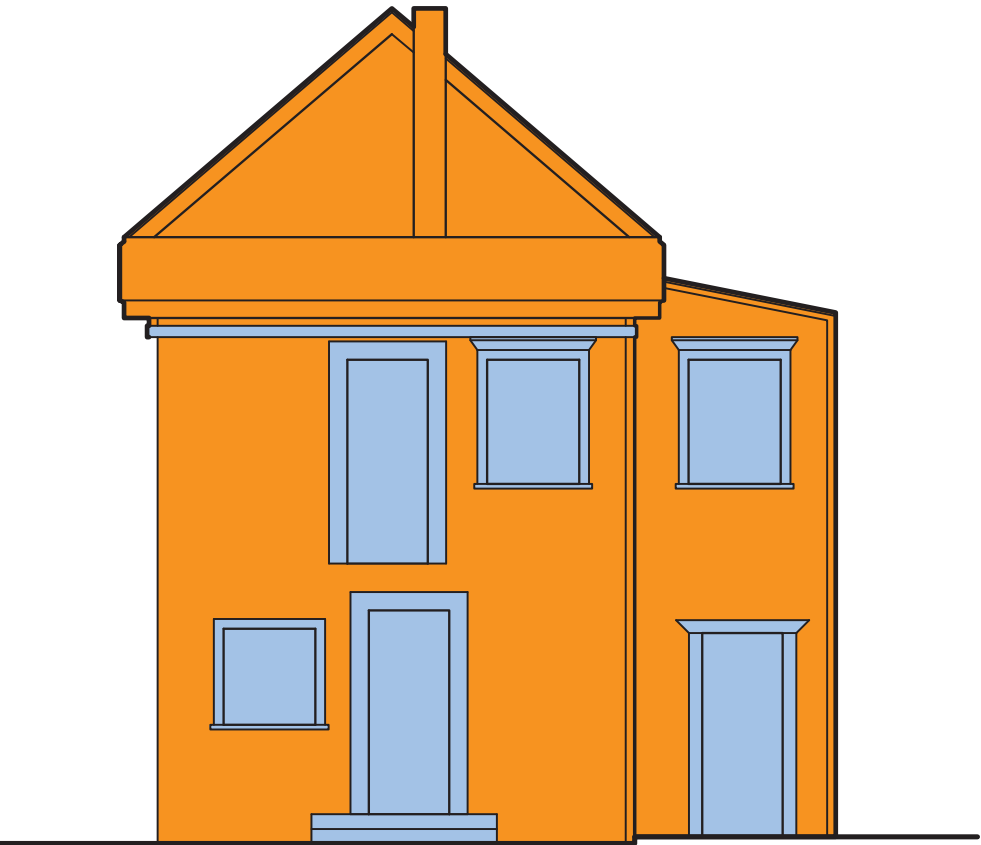
SIGNIFICANCE DIAGRAMS
ELEVATIONS



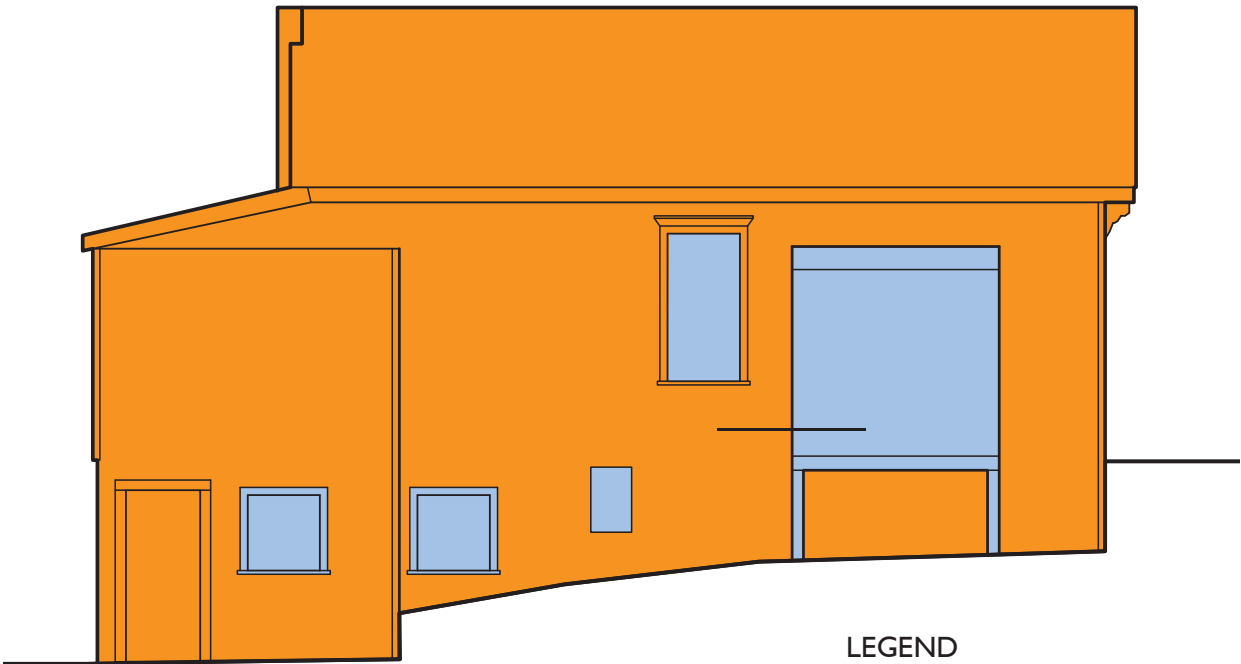
Southwest Elevation



Southeast Elevation



Northeast Elevation



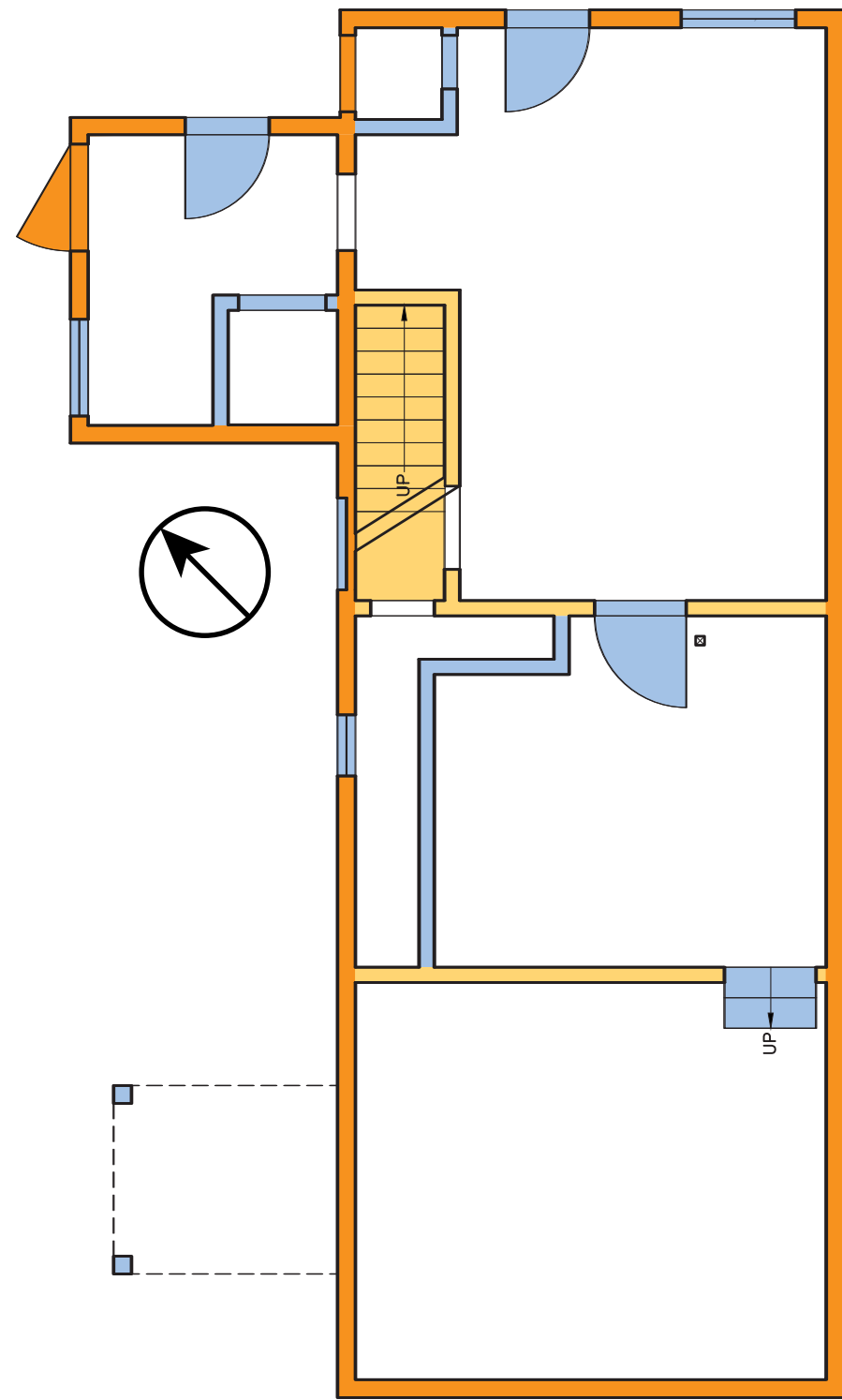
Northwest Elevation

LEGEND

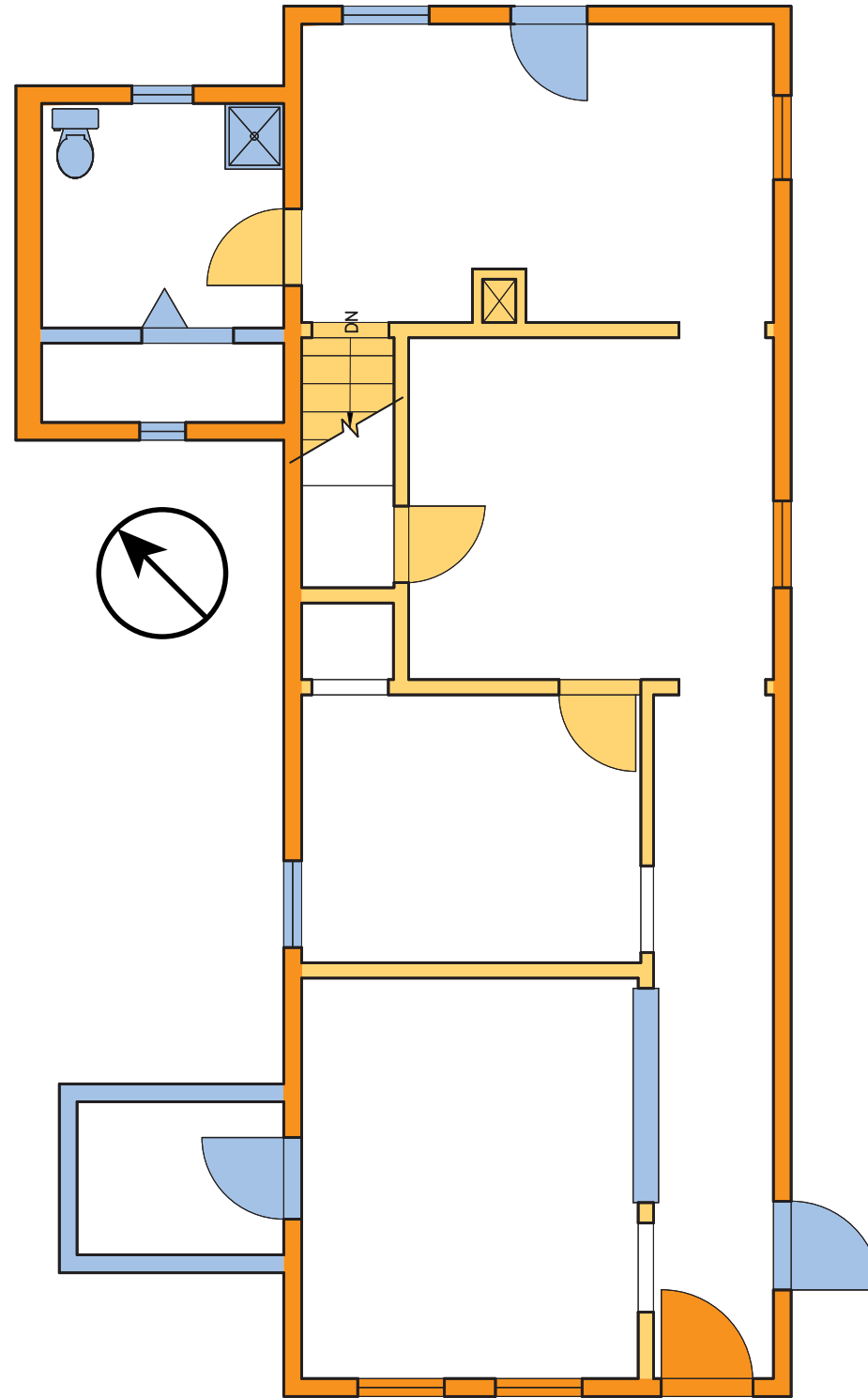
<div></div>	Primary Significance
<div></div>	Secondary Significance
<div></div>	Not Significant

SIGNIFICANCE DIAGRAMS

FLOOR PLANS



Basement Floor



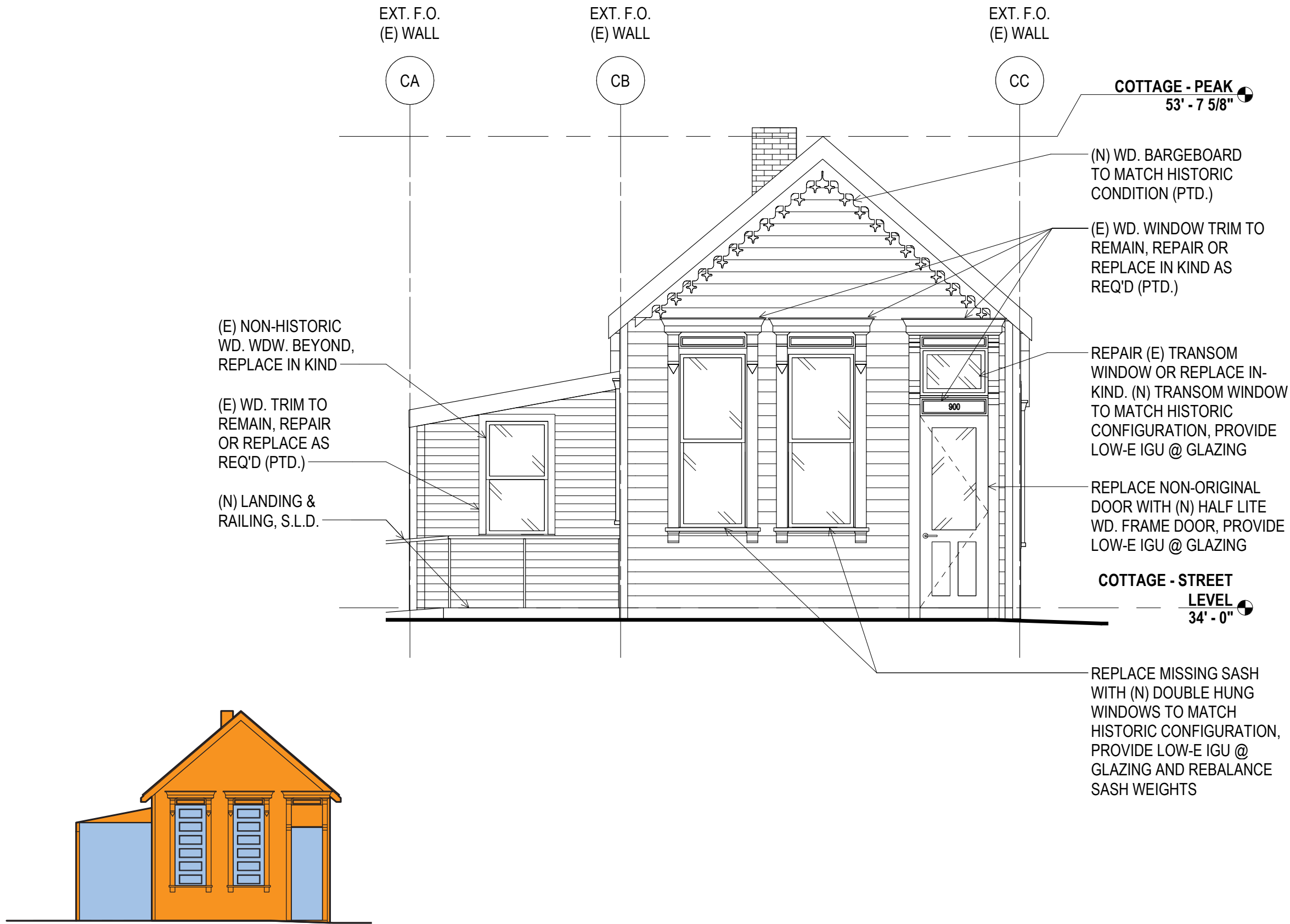
First Floor

LEGEND

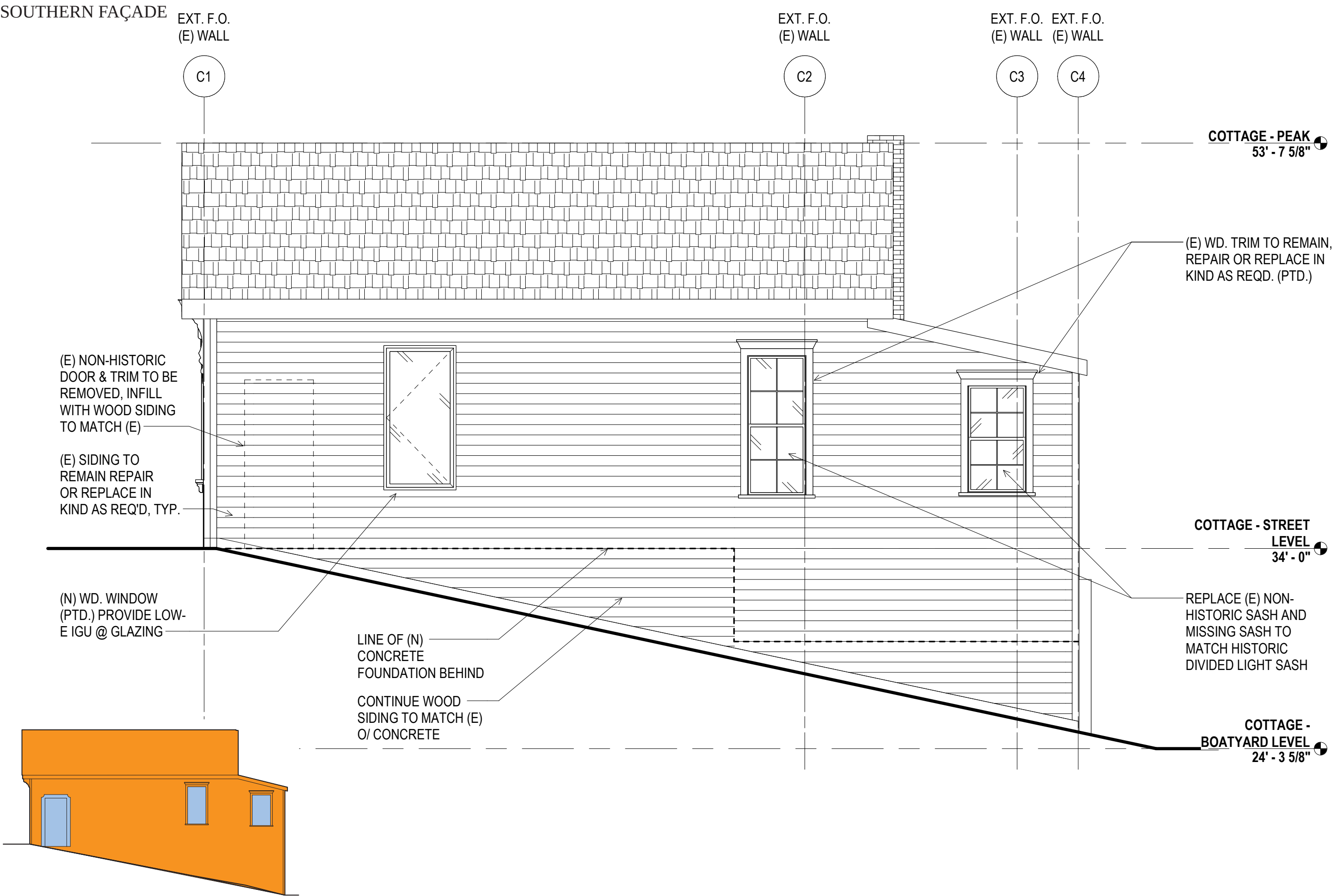
Primary Significance

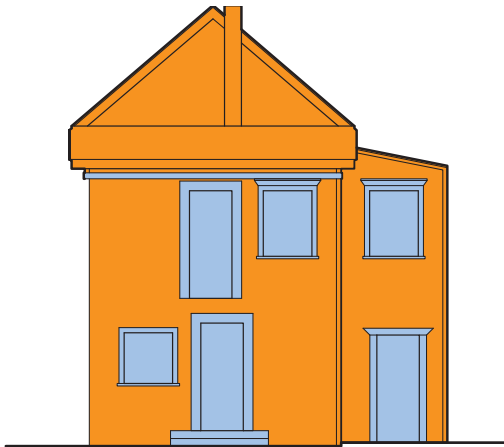
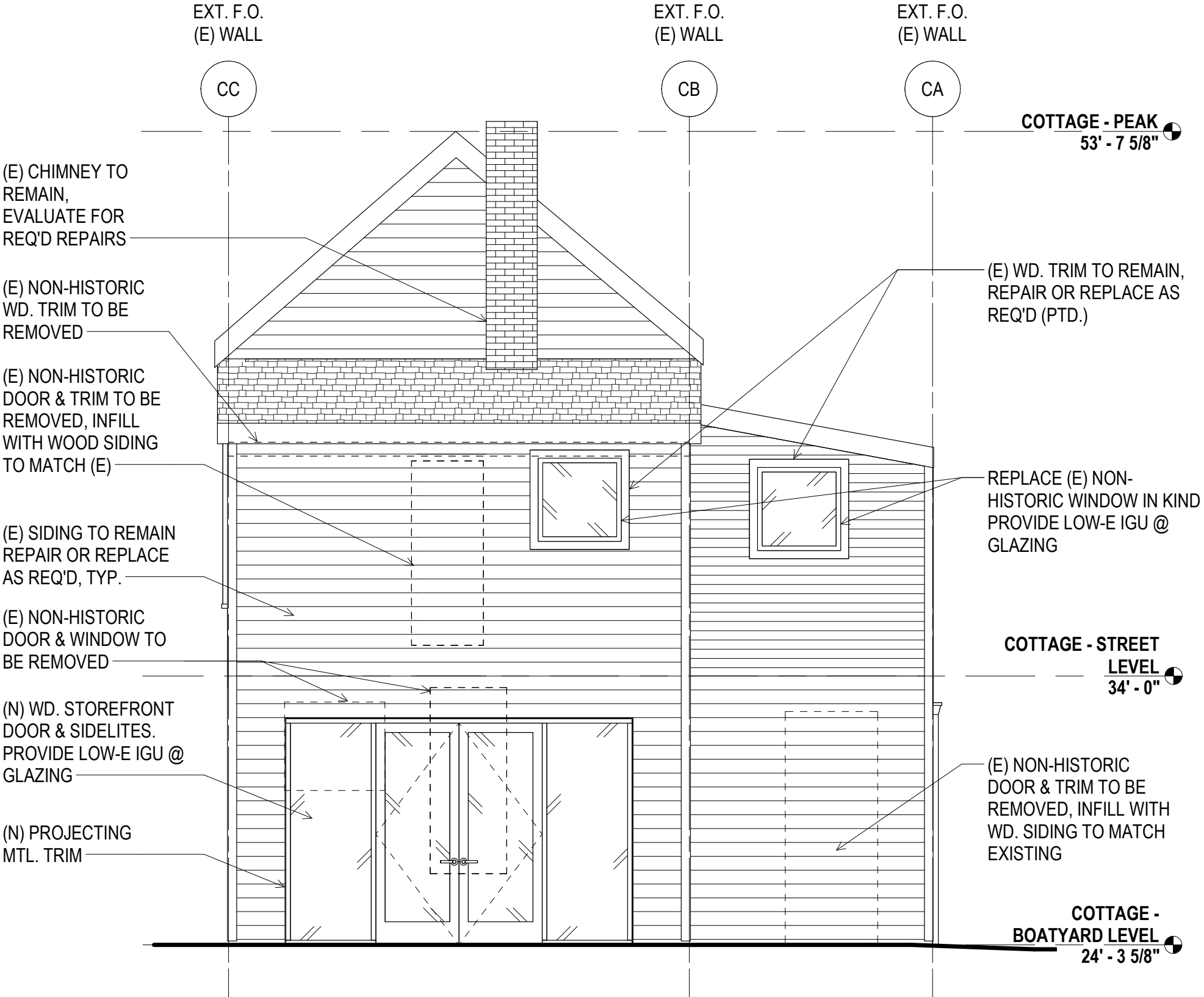
Secondary Significance

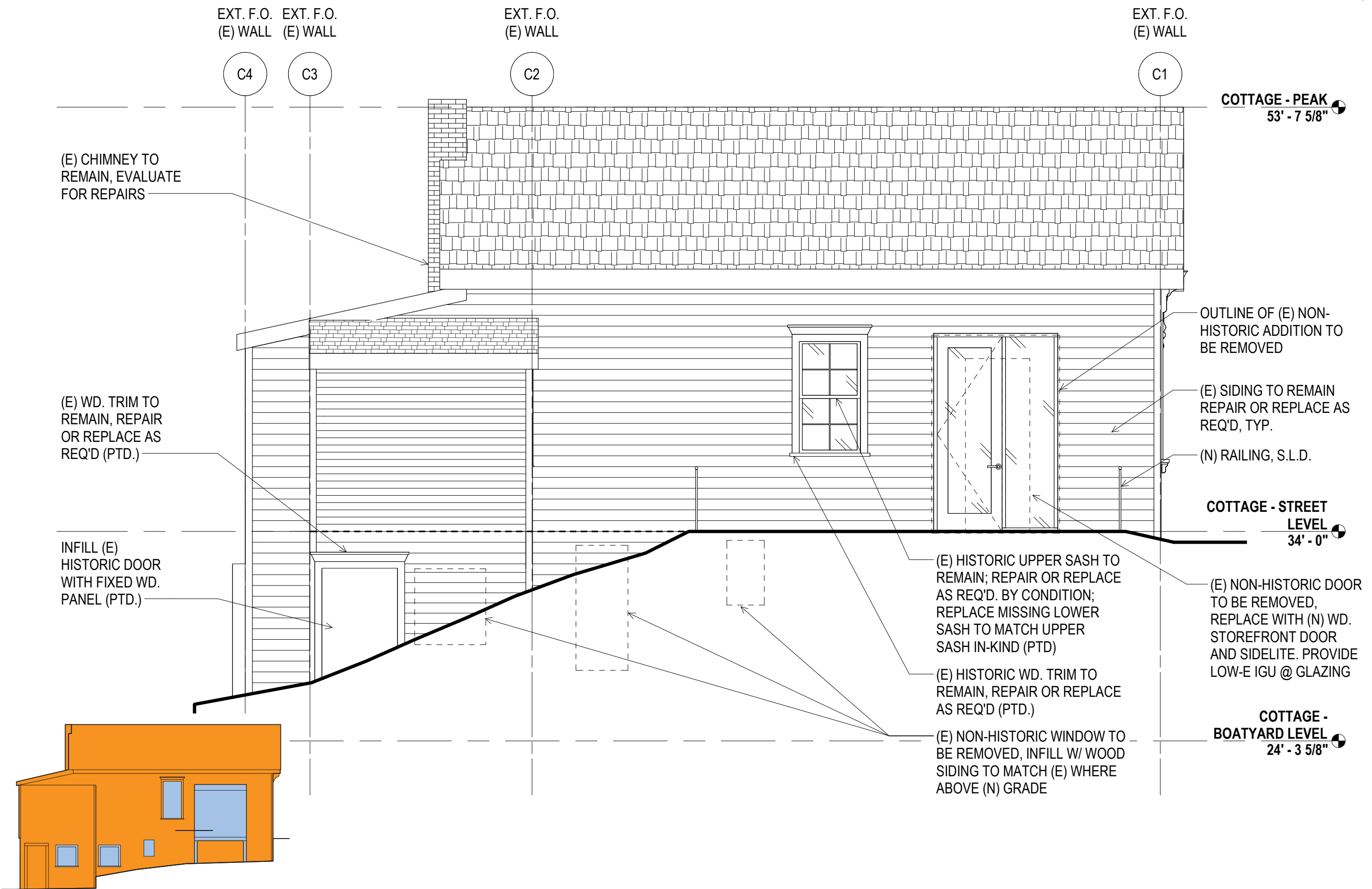
Not Significant

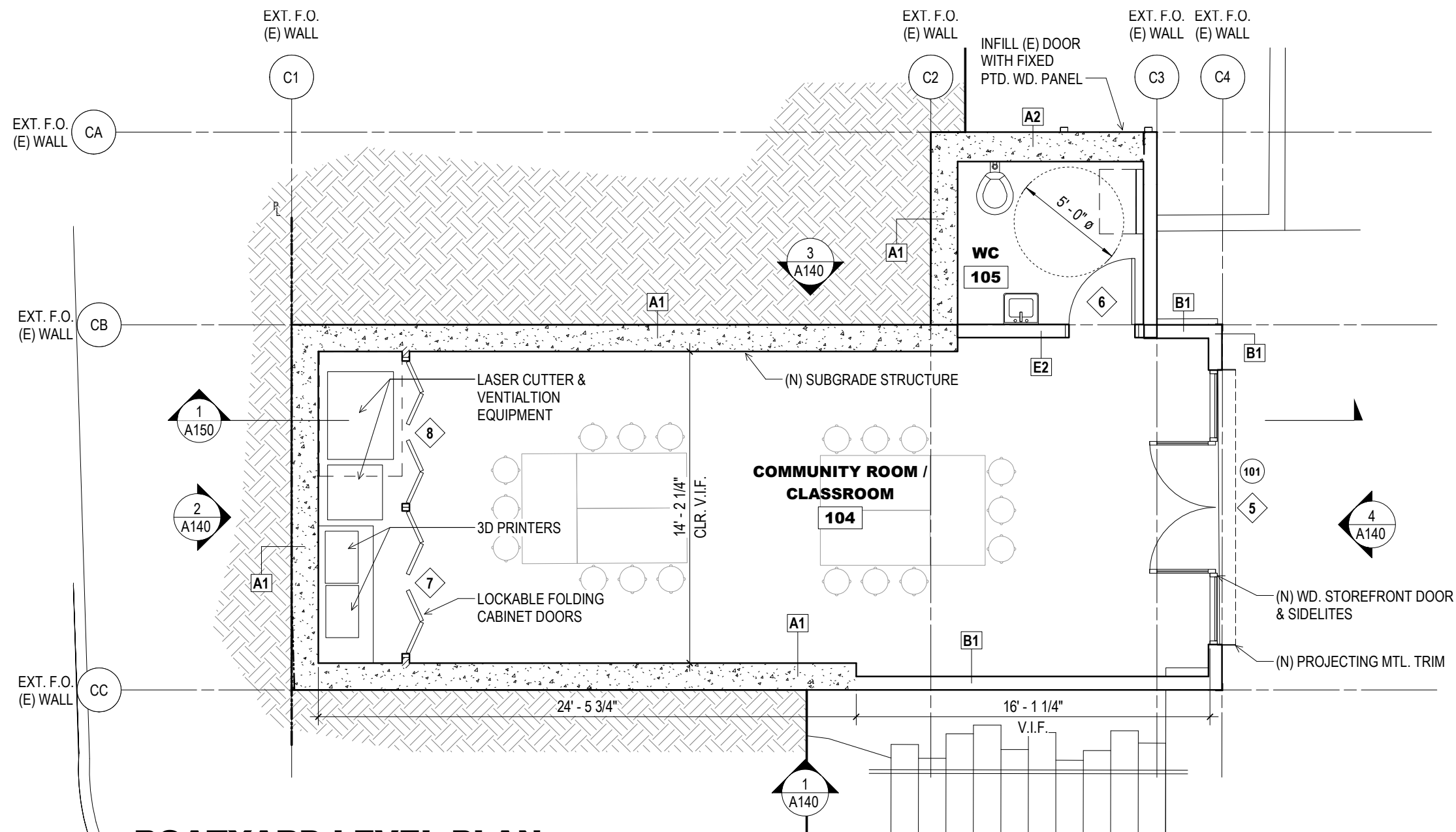


SOUTHERN FAÇADE

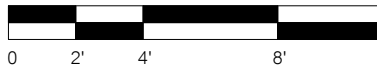


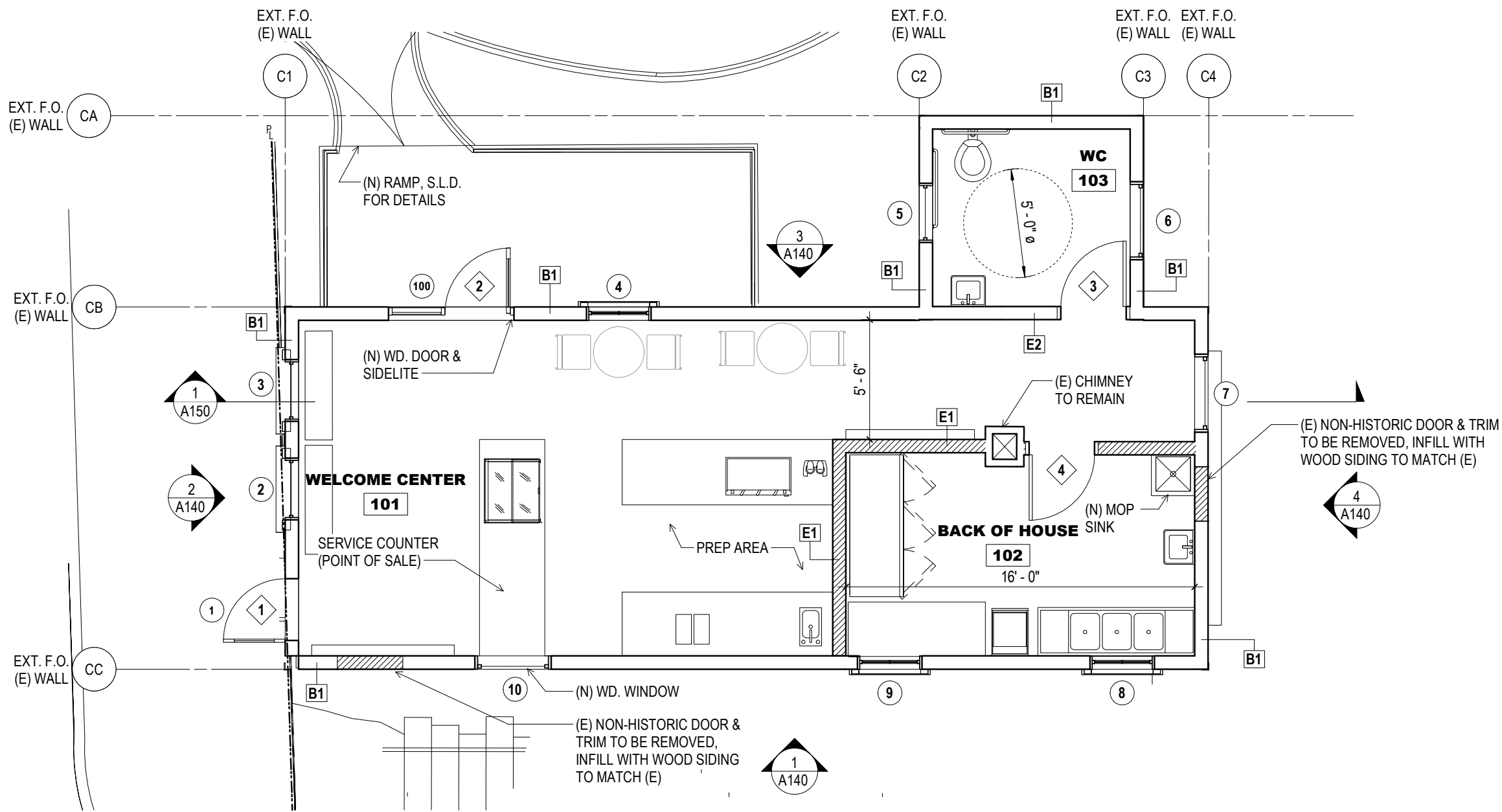




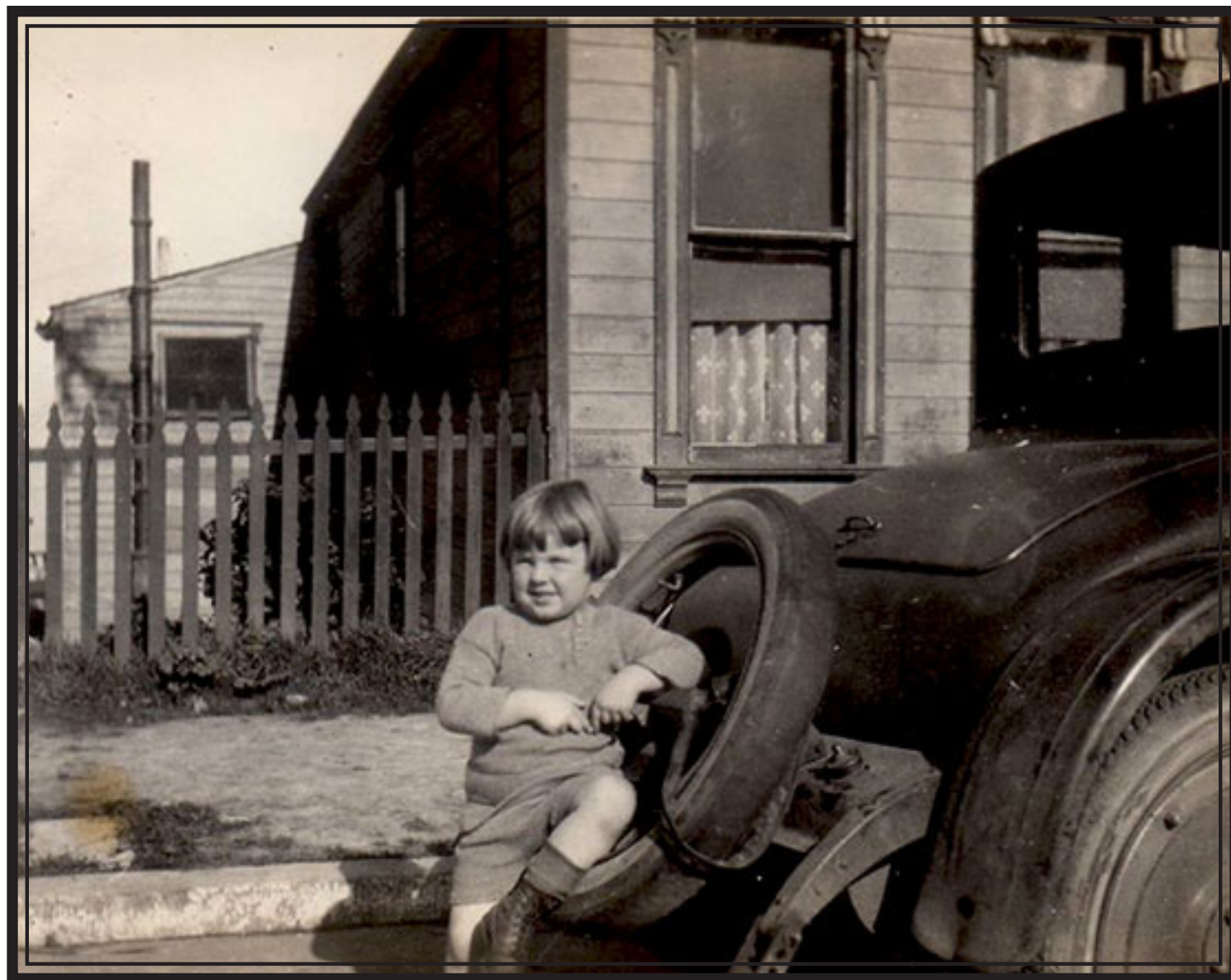


1 BOATYARD LEVEL PLAN
1/4" = 1'-0"





2 **STREET LEVEL PLAN**
1/4" = 1'-0"



Thank You



Snark (built 1907; schooner, 2m; yacht), under construction at Anderson & Cristofani's yard, scow schooner Matilda in background, San Francisco, Calif., ca. 1907, R. weinstein photographer, San Francisco Maritime National Historical Park, A04.16,813n (SAFR 21374).

The work from which this copy was made may or may not include a formal copyright notice. This work may be protected by U.S. copyright law (Title 17, U.S. Code), which governs reproduction, distribution, public display, and other uses of protected works. Uses may be allowed with permission from the copyright holder, or if the copyright on the work has expired, or if the use is "fair use" or within another exemption. The user of this work is responsible for compliance with the law.

Figure 1: Historic northeast facade from ca.1907. Photographed by R. Weinsten. Source: San Francisco Maritime National Historical Park, A04.16, 813n (SAFR 21374).



Photography ©Stephen Schafer • www.SCHAFPHOTO.com • DRAFT REVIEW SAMPLE

Figure 2: Existing northeast facade. Photograph by Stephen Schafer, 2020.



Figure 3: Historic southwest facade. The bathroom addition near the west corner of the house had not yet been built. Photographed by the Planning Department in 1976.



Figure 4: Existing southwest facade. Photograph by Stephen Schafer, 2020.



Figure 5: Existing first floor office and corridor. Photographed by Stephen Schafer, 2020.



Figure 6: Existing first floor room. Photograph by Stephen Schafer, 2020.



Figure 7: Existing interior window trim. Photographed by Page & Turnbull, 2021.



Figure 8: Existing basement room. Photograph by Stephen Schafer, 2020.



Siemer's Shipyard, Hunters Point, San Francisco, Calif., ca. 1900, San Francisco Maritime National Historical Park, A04.8.901n (SAFR 21374).

The work from which this copy was made may or may not include a formal copyright notice. This work may be protected by U.S. copyright law (Title 17, U.S. Code), which governs reproduction, distribution, public display, and other uses of protected works. Uses may be allowed with permission from the copyright holder, or if the copyright on the work has expired, or if the use is "fair use" or within another exemption. The user of this work is responsible for compliance with the law.

Figure 9: Historic view of boatyards at India Basin, c. 1900, viewed facing east; extant features are marked.
Source: Maritime Research Center, San Francisco Maritime National Historical Park



Photography ©Stephen Schafer • www.SCHAFPHOTO.com • DRAFT REVIEW SAMPLE

Figure 10: Existing view southeast from within India Basin Scow Schooner Boatyard Historic District. Photograph by Stephen Schafer, 2020.





Photography ©Stephen Schafer • www.SCHAFPHOTO.com • DRAFT REVIEW SAMPLE



Photography ©Stephen Schafer • www.SCHAFPHOTO.com • DRAFT REVIEW SAMPLE



Photography ©Stephen Schafer • www.SCHAFPHOTO.com • DRAFT REVIEW SAMPLE



Photography ©Stephen Schafer • www.SCHAFPHOTO.com • DRAFT REVIEW SAMPLE