

Testimony of Karen Kai re:  
Ordinance Amending the Administrative Code re Cultural Districts  
Presented to the Historic Preservation Commission  
June 6, 2018

Good afternoon, Commission members and staff.

Thank you for giving the public an opportunity to speak to the Board of Supervisors Ordinance regarding Cultural Heritage Districts. I think the HPC Staff report does an excellent job of noting some of the particular problems with the Cultural District Ordinance that need to be addressed and amended.

I have 3 major issues with the Cultural District Ordinance that I would like to emphasize today:

1. The legislation does not include participation of the HPC as mandated under the City & County Charter Sec. 4.135 requiring the HPC to "advise the City on historic preservation matters (and) participate in processes that involve historic or cultural resources." The HPC has the experience, expertise and resources needed to create meaningful Cultural Districts.
2. By placing creation and management of Cultural Heritage under the Mayor's office of Housing and Community Development and deliberately omitting mandatory involvement of the HPC weakens the inclusion of the comprehensive, multidisciplinary examination of means to sustain community cultural heritage and interaction with increasing pressures of development, displacement and gentrification.
3. The establishment of a five-member body selected by the district Supervisor with power to distribute funds and "advise the Board, the Mayor, and the Mayor's Office of Housing and Community Development" works against community empowerment and self-determination by substituting the voices of a few hand-picked, politically-connected individuals for a robust and transparent process of community engagement that builds an informed and democratic decision making process.

With these points in mind, I would respectfully suggest that the HPC's proposed amendment of this ordinance include returning jurisdiction over the process to create and follow up with Cultural Heritage and Economic Sustainability Strategy (renamed in the ordinance as Cultural, History, Housing and Economic Sustainability) programs be returned to the HPC and that the Mayor's Office of Housing and Community Development be included as an agency that will be consulted as part of such a process. If this is too large a change, then the very least that should be recommended is that participation by Planning/HPC be a mandatory element of the creation of a CHESD district.

I further suggest that the creation of the 5-person bodies be deleted or that they should exist for a limited time and for the purpose of creating a fully-accessible, open and transparent community body to analyze, discuss, and formulate recommendations for policies affecting the CHESD district.

These suggestions are based on my work with planning in Japantown. I was part of the core group that did the final drafting of the JCHESS document. Our efforts were always designed to bring resources to Japantown that would allow it to thrive into the future as a community with a distinctive cultural heritage that contributes to the vibrant cultural fabric of San Francisco, the Bay Area and beyond. The knowledge we have gained and the relationship that we have built in the last decade working with Planning and its Historic Preservation staff has been essential to our ability to create a plan that has the potential to fulfill our goals. A process that does not include, and indeed require, the participation of HPC and Planning is not a good or wise path.

Finally, I also suggest that the first sentence in Paragraph 3 of the Findings on page 3 of the HPC Draft resolution be changed as follows (strike outs indicating deletions and italics, additions):

There is ~~wholehearted~~ support for *the concept behind* the Ordinance and the effort to establish a formalized and codified process for establishing *well-documented and thoughtfully planned, community empowering* cultural districts throughout the City. ...

I am personally very wary of this ordinance considered in that it was rushed and insufficient community input was properly obtained or considered. For example, at the Supervisor's Rules Committee on May 9, 2018 the Chair of the Japantown Task Force testified that "we're very much in support of this legislation". In my opinion, this was an uninformed and unauthorized statement that violated the rules of the JTF as this matter had never been considered by the JTF Board or recommended by the JTF Cultural Heritage Committee. In fact, the Cultural Heritage Committee had been in contact with Supervisor Ronen's office starting in late 2017 and had a standing request to receive information about the ordinance in order to analyze its provisions and make a recommendation to the JTF Board. For many months we were told there were amendments in the works and that a new draft would be forthcoming. Committee members never received a full draft and on May 8 members of the Committee were informed that "Due to JTF capacity issues, a recommendation will be made to the JTF Board to disband the CH Committee." Thus, no recommendation on the Ordinance was ever made or presented to the JTF Board, nor was the issue considered by the full board in public session. The statement by the JTF Chair was thus unauthorized and misleading. I believe that a full discussion in the Japantown community would have revealed the same concerns and issues raised in the HPC staff memo and a few more.

When the Japantown community protested that the predecessor of JCHESS, the Better Neighborhood Plan, did not fit the needs of our community, Planning gave us a second chance and we built upon the cultural surveys and the Japantown Context Statement created under the BNP. But it was the vision, expertise, hard work and desire of the HPC/Planning staff that allowed us to create the new and groundbreaking vision for community preservation of its cultural heritage and historic resources and to begin to plan and implement steps for the long term viability of Japantown that would come to be JCHESS. Thank you all for being true partners in the creation of JCHESS. I hope that the Board of Supervisors will open their eyes a little wider and see how essential the participation of the HPC and its staff is to the success of future Cultural Districts.

Thank you.

Received at HPC Hearing 6/6/18  
J. Cleeman

## FIREBOAT STATION 35 AT PIER 22 ½

Historic Preservation Commission – Architectural Review Committee Meeting  
June 6, 2018



FIREBOAT STATION 35 AT PIER 22 ½  
SAN FRANCISCO HISTORIC PRESERVATION COMMISSION  
ARCHITECTURAL REVIEW COMMITTEE MEETING – JUNE 6, 2018

**SWINERTON-POWER**  
a joint venture

SHAH KAWASAKI ■ ARCHITECTS

**Liftech**  
SUSTAINABLE INFRASTRUCTURE



# WATERFRONT SITE PLAN



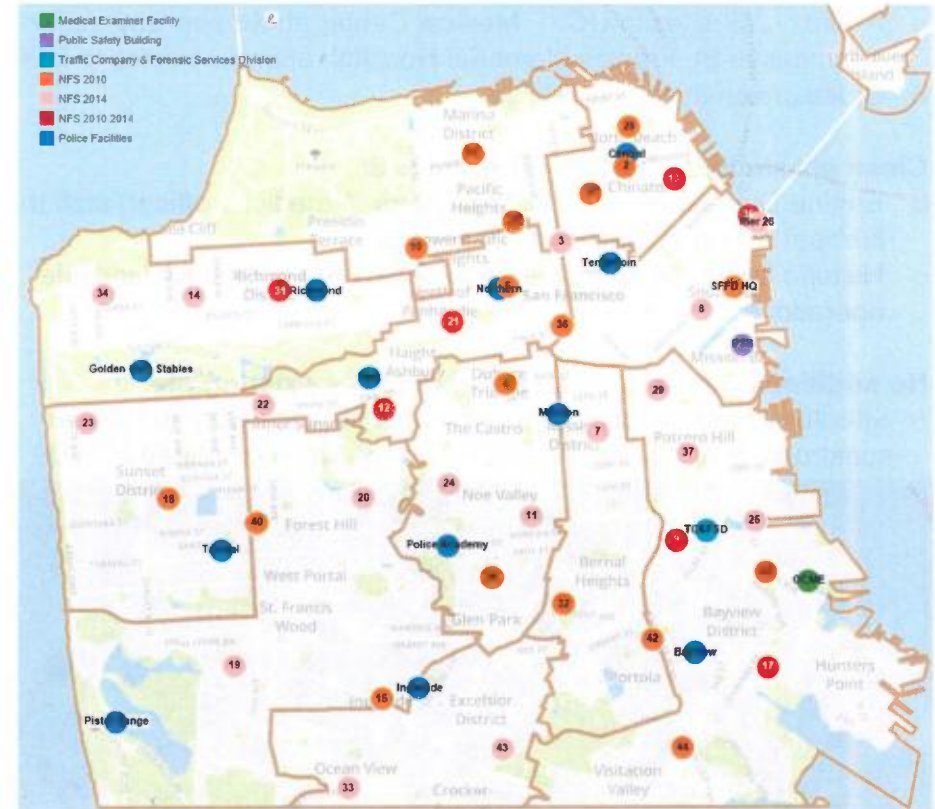
## 2014 ESER BOND PROGRAM BACKGROUND

### \$400M General Obligation Bond authorized in June 2014 with approval by 79% of voters

- Neighborhood Fire Stations \$85M
- Emergency Firefighting Water System \$55M
- District Police Stations and Infrastructure \$30M
- Motorcycle Police and Crime Lab \$165M
- Medical Examiner Facility \$65M



### ESER Program Project Map



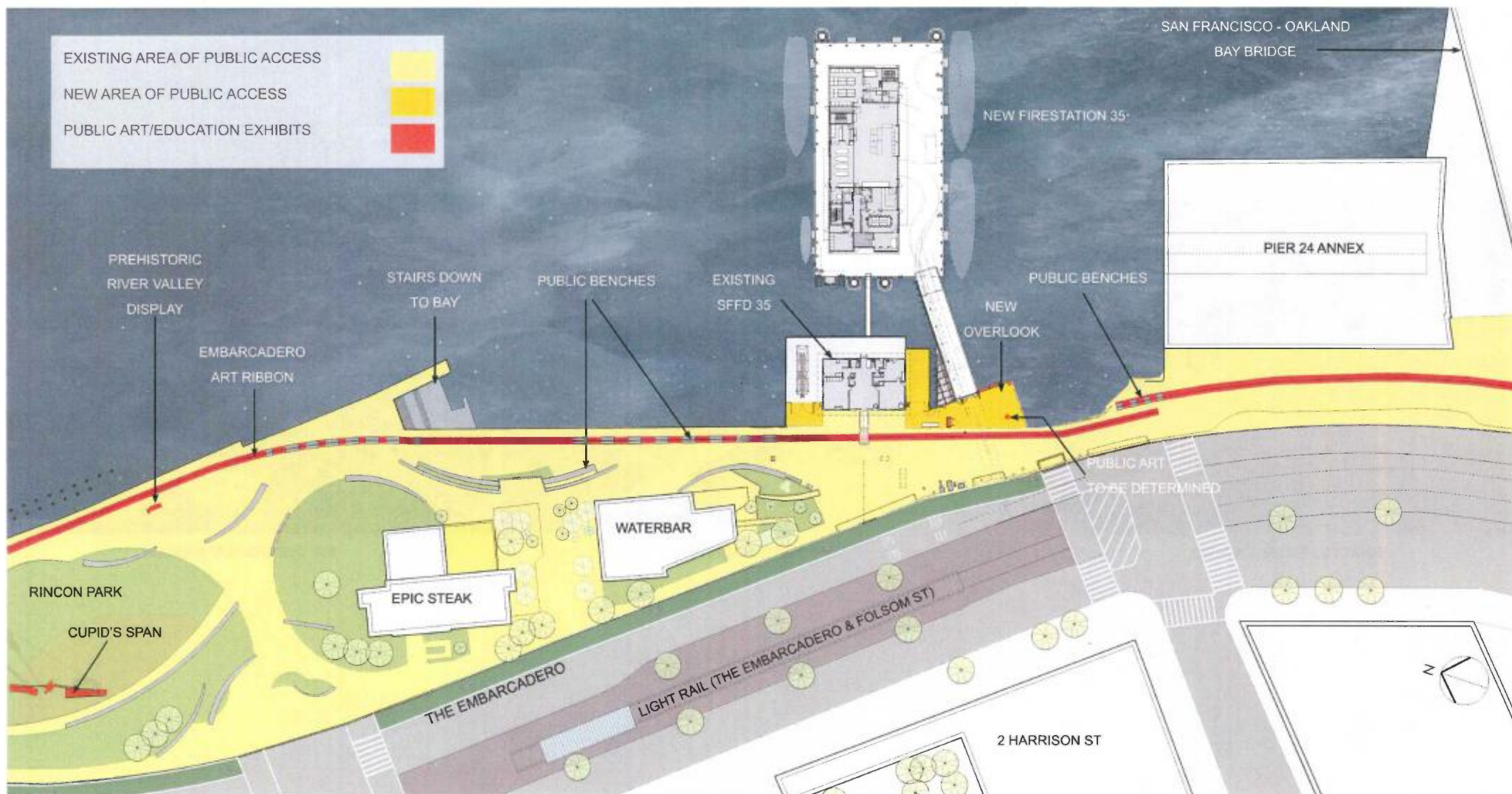
## PROJECT SITE OVERVIEW – PIER 22 ½

- **Central location** along the San Francisco Waterfront with direct access to the San Francisco Bay
  - Newly developed Mission Bay and Hunter's Point / Shipyard neighborhoods
  - Approx. 2.3 miles to UCSF Medical Center at Mission Bay; approx. 1.9 miles to St. Francis Memorial Hospital; approx. 4 miles to ZSFGH
  - Close proximity to Bay Bridge
- **Close proximity to Historic Firehouse 35**
  - Engine Company No. 35 (2 firefighters, 1 medic, 1 officer) staff the fireboat during marine calls for service
  - Historic firehouse will continue to deploy the engine for landside operations
- **No additional seismic upgrade work to the existing pier**
  - Structural repair, stabilization, and maintenance work to the pier substructure below the bulkhead building was completed in 2009



Page 4

# CONTEXT SITE PLAN



Page 5

FIREBOAT STATION 35 AT PIER 22 1/2  
 SAN FRANCISCO HISTORIC PRESERVATION COMMISSION  
 ARCHITECTURAL REVIEW COMMITTEE MEETING – JUNE 6, 2018

**SWINERTON-POWER**  
 a joint venture

SHAH KAWASAKI ■ ARCHITECTS

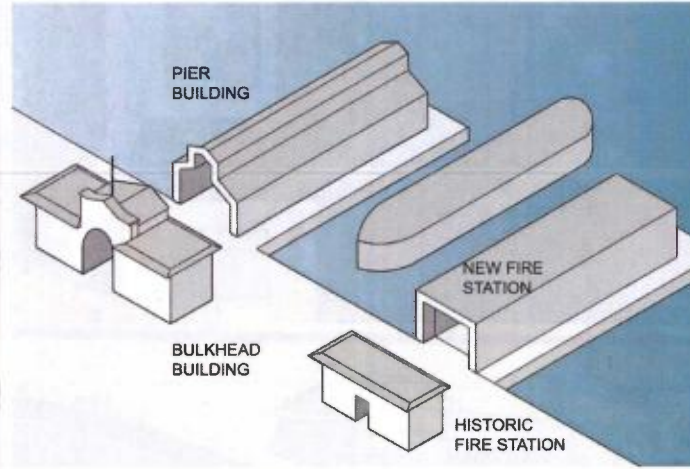
**Liftech**  
 LIFTECH CONSULTANTS INC.



# CONTEXT



HISTORIC EMBARCADERO



PARTI DIAGRAM

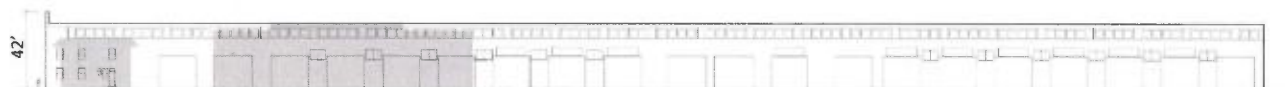


EXPLORATORIUM (AERIAL)

## RELATIVE SCALE



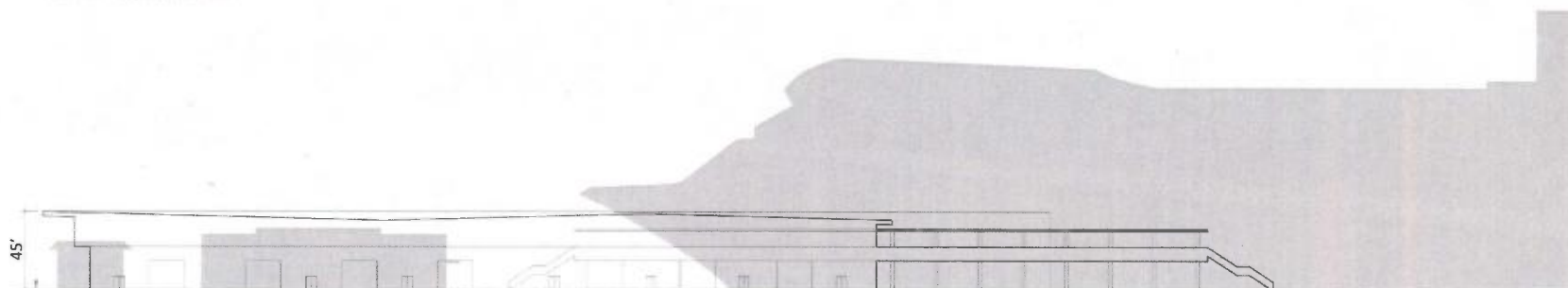
Pier 26 - Adjacent Pier



Pier 28



Pier 15 - Exploratorium



Pier 27 - Cruise Ship Terminal



Pier 22.5 - Fire Station 35

## EMBARCADERO PERSPECTIVE



Page 8

FIREBOAT STATION 35 AT PIER 22 ½  
SAN FRANCISCO HISTORIC PRESERVATION COMMISSION  
ARCHITECTURAL REVIEW COMMITTEE MEETING – JUNE 6, 2018

**SWINERTON-POWER**  
a joint venture

SHAH KAWASAKI ■ ARCHITECTS

**Liftech**  
LIFTECH CONSULTANTS



## BUILDING MATERIALS/OPERATIONS



1 INSULATED METAL PANEL  
CORRUGATED DS60  
SILVER/MARINE FINISH



2 BAGUETTE SCREEN  
DARK GREY



3 ALUMINUM AIRFOIL  
LOUVERS  
DARK GREY



FIREBOAT STATION 35 AT PIER 22 ½  
SAN FRANCISCO HISTORIC PRESERVATION COMMISSION  
ARCHITECTURAL REVIEW COMMITTEE MEETING – JUNE 6, 2018

**SWINERTON-POWER**  
a joint venture

SHAH KAWASAKI ■ ARCHITECTS

**Liftech**  
LIFTECH CONSULTANTS INC.



## WATER PERSPECTIVE



# FLOOR PLANS



LEVEL 1 PLAN

FIREBOAT STATION 35 AT PIER 22 ½  
 SAN FRANCISCO HISTORIC PRESERVATION COMMISSION  
 ARCHITECTURAL REVIEW COMMITTEE MEETING – JUNE 6, 2018

**SWINERTON-POWER**  
 a joint venture

SHAH KAWASAKI • ARCHITECTS

**Liftech**  
 LIFTECH CONSULTANTS



# FLOOR PLANS



LEVEL 2 PLAN

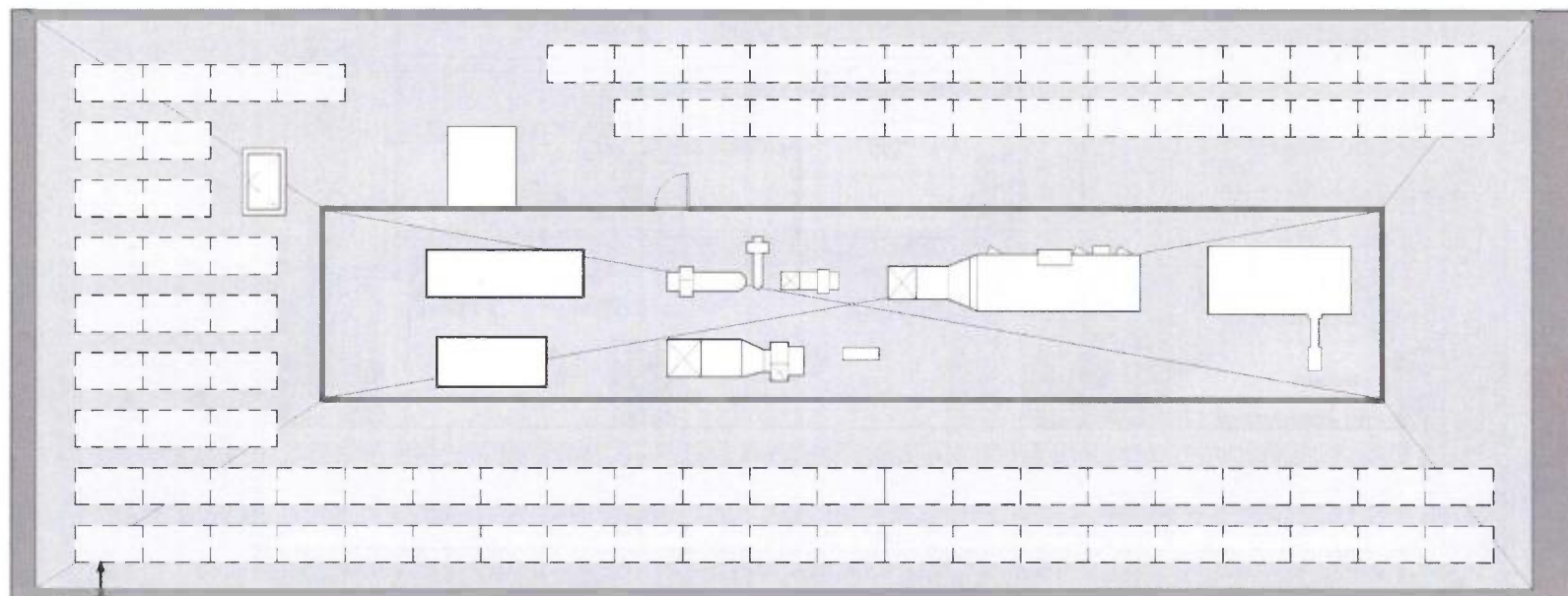
FIREBOAT STATION 35 AT PIER 22 ½  
 SAN FRANCISCO HISTORIC PRESERVATION COMMISSION  
 ARCHITECTURAL REVIEW COMMITTEE MEETING – JUNE 6, 2018

**SWINERTON-POWER**  
 a joint venture

SHAH KAWASAKI • ARCHITECTS

**Liftech**  
 LIFTECH CONSULTANTS INC.





FUTURE PHOTOVOLTAIC  
PANELS

## ROOF PLAN

FIREBOAT STATION 35 AT PIER 22 1/2  
SAN FRANCISCO HISTORIC PRESERVATION COMMISSION  
ARCHITECTURAL REVIEW COMMITTEE MEETING – JUNE 6, 2018

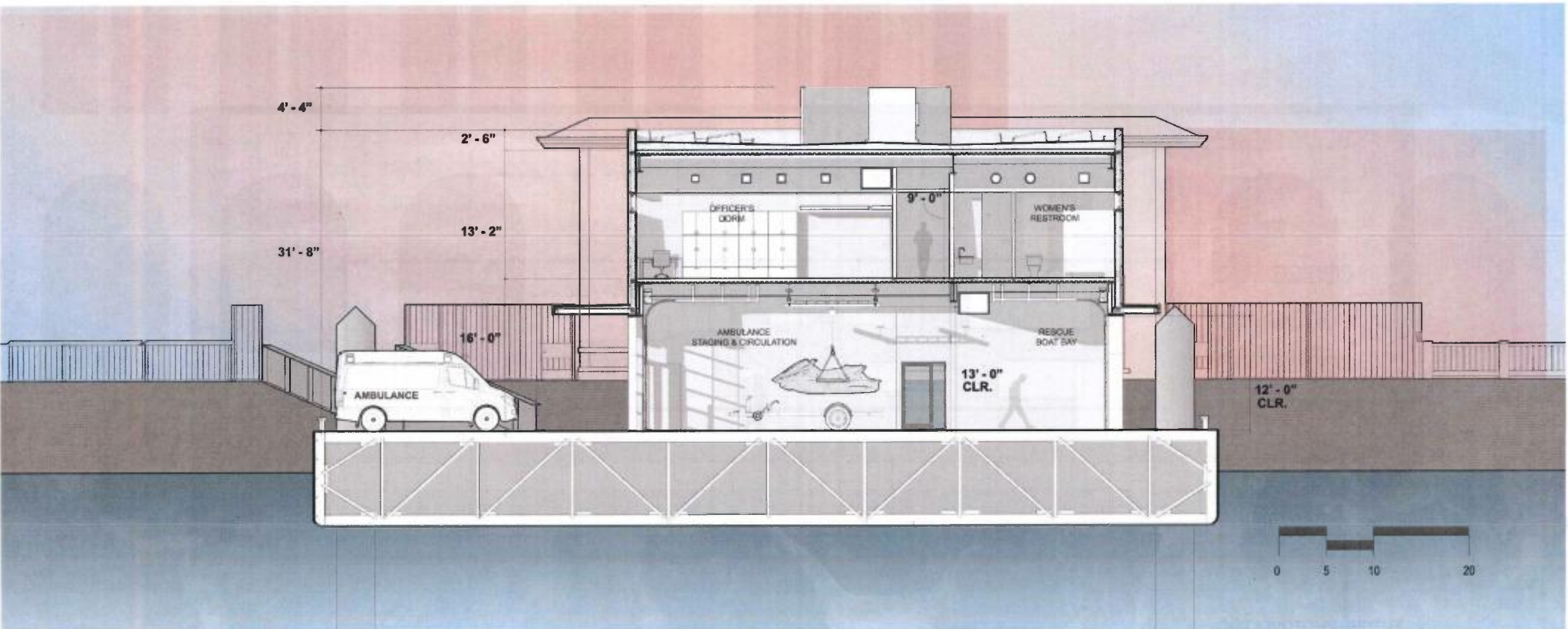
**SWINERTON-POWER**  
a joint venture

SHAH KAWASAKI ■ ARCHITECTS

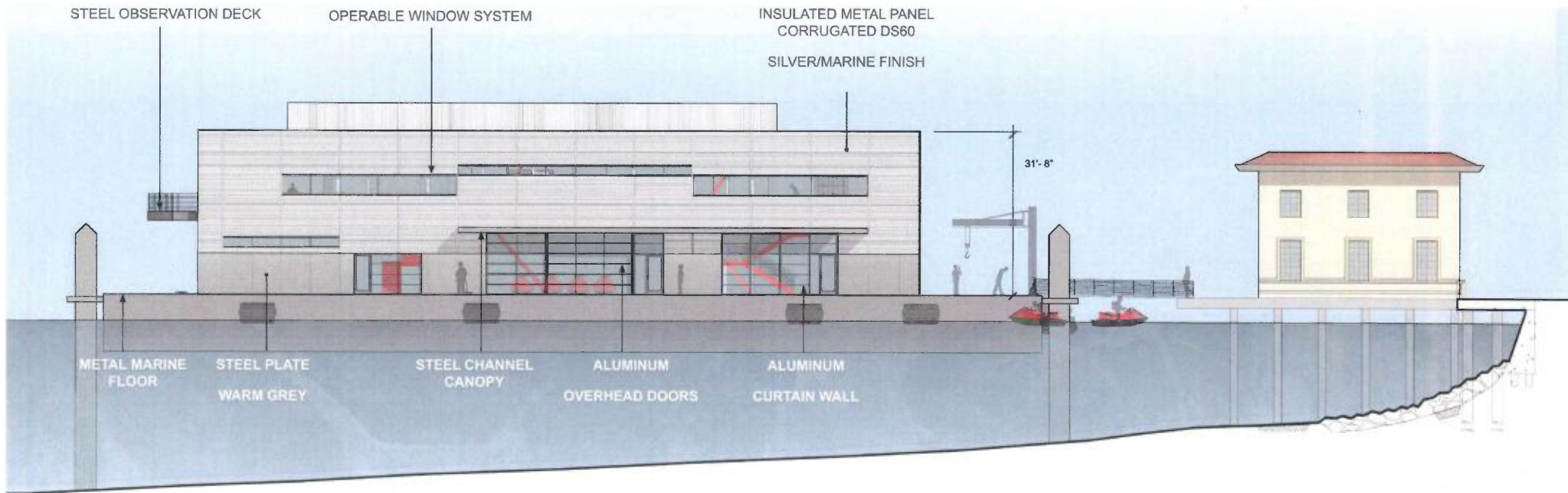
**Liftech**  
LIFTECH CONSULTANTS INC.



## BUILDING CROSS-SECTION

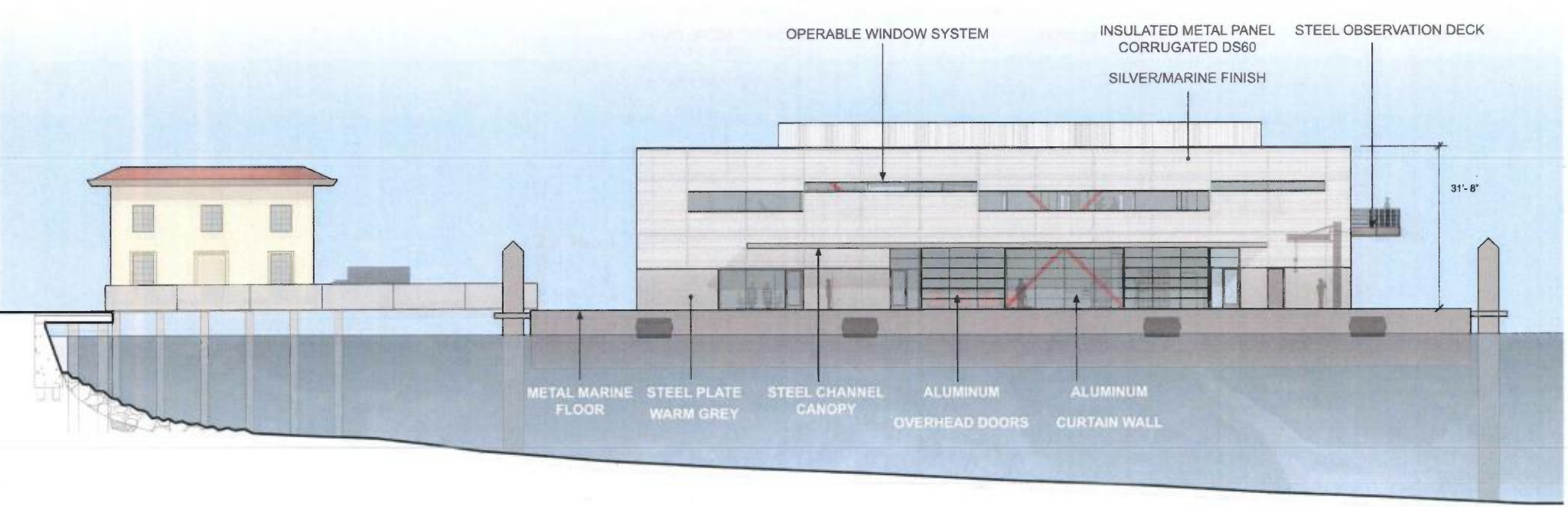


# ELEVATIONS



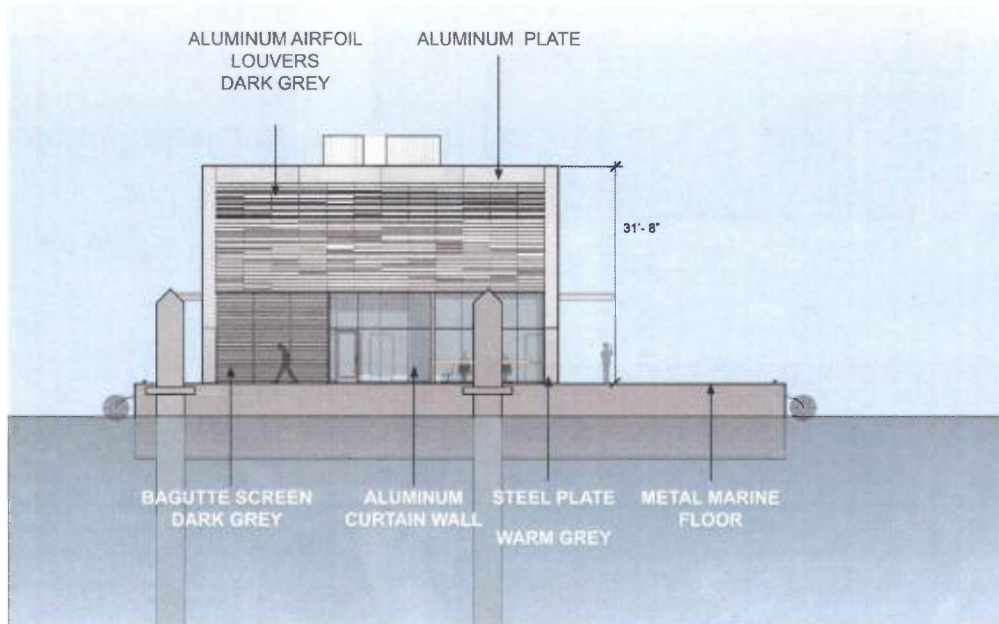
NORTH ELEVATION

ELEVATIONS

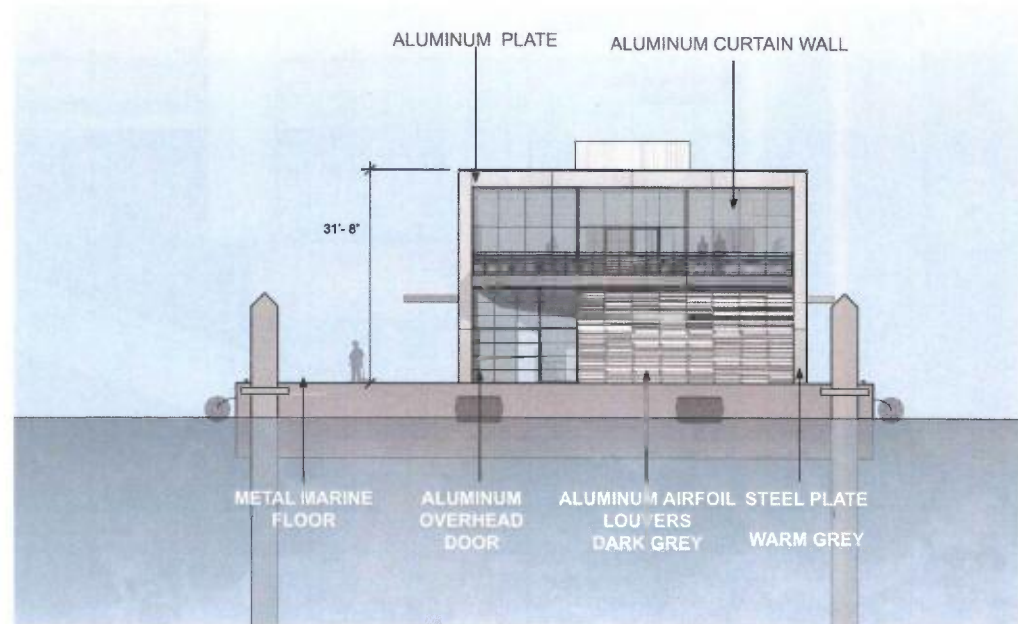


SOUTH ELEVATION

# ELEVATIONS

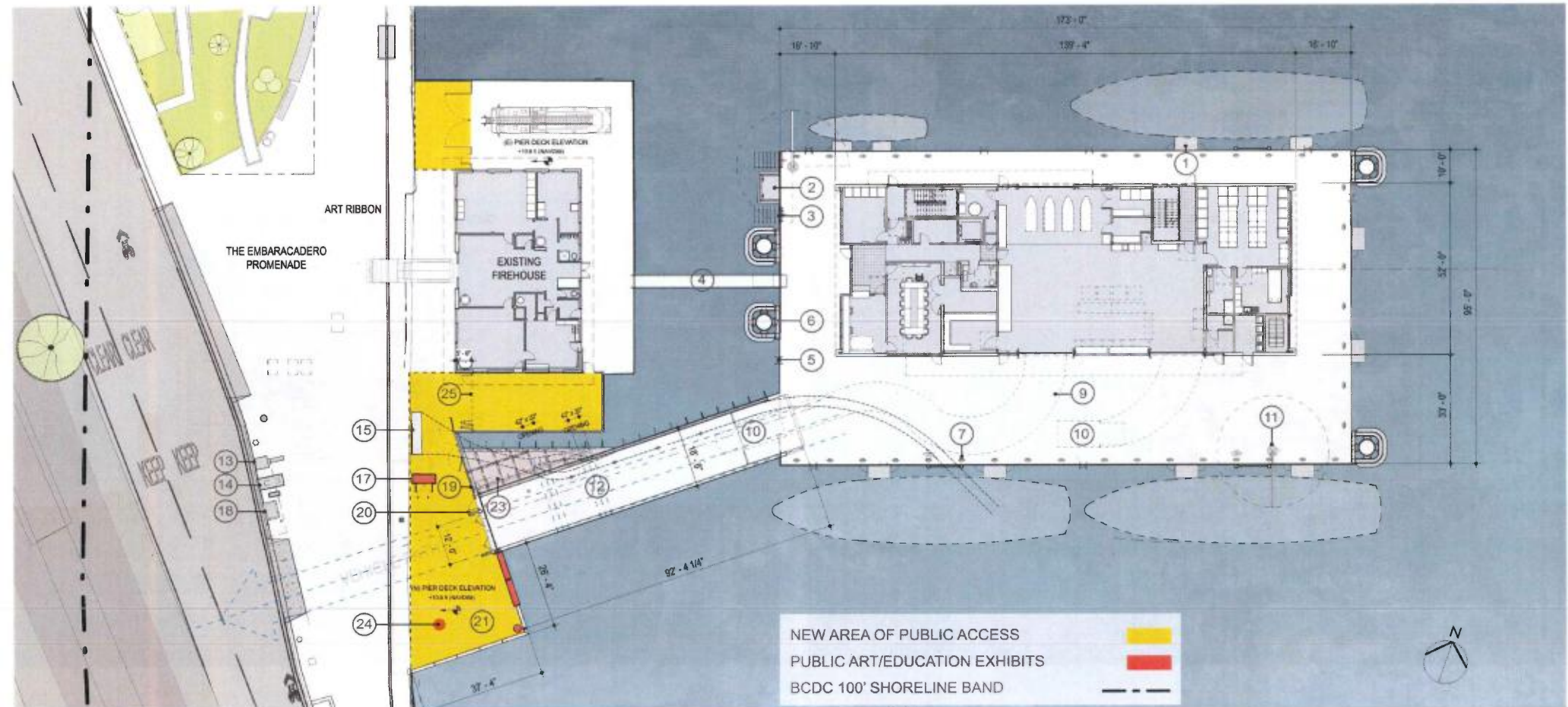


WEST ELEVATION



EAST ELEVATION

# SITE PLAN



## KEY NOTES

- |                                      |                                              |                                   |                                    |                               |                               |
|--------------------------------------|----------------------------------------------|-----------------------------------|------------------------------------|-------------------------------|-------------------------------|
| 1. FENDER                            | 6. 48" DIAMETER PILE                         | 10. AMBULANCE                     | 14. FIRE WATER METER               | 19. (N) FENCE                 | 24. FUTURE PUBLIC ART         |
| 2. LOWER PLATFORM FOR JET SKI ACCESS | 7. CLEAT                                     | 11. CRANE                         | 15. (E) AWSS MANIFOLD TO REMAIN    | 20. EMERGENCY VEHICLE ACCESS  | 25. PUBLIC ACCESS GATE        |
| 3. JET SKI LIFT                      | 8. LED EDGE LIGHT                            | 12. EMERGENCY VEHICLE ACCESS RAMP | 16. GATE                           | 21. OVERLOOK                  | 26. (E) FENCE (TO BE REMOVED) |
| 4. ALUMINUM GANGWAY                  | 9. PATH OF AMBULANCE BASED ON AUTO-TURN ANAL |                                   | 17. ELECTRICAL SERVICE SWITCHBOARD | 22. SEA LEVEL EXHIBIT MARKER  |                               |
| 5. ACCESS LADDER                     |                                              |                                   | 18. GAS METER ON CONCRETE PAD      | 23. FIRE HOSE GRATED PLATFORM |                               |

## EMBARCADERO (SOUTH) PERSPECTIVE



Page 19

FIREBOAT STATION 35 AT PIER 22 1/2  
SAN FRANCISCO HISTORIC PRESERVATION COMMISSION  
ARCHITECTURAL REVIEW COMMITTEE MEETING – JUNE 6, 2018

**SWINERTON-POWER**  
a joint venture

SHAH KAWASAKI ■ ARCHITECTS

**Liftech**  
LIFTECH CONSULTANTS INC.



## SOUTH PLATFORM PERSPECTIVE



Page 20

FIREBOAT STATION 35 AT PIER 22 ½  
SAN FRANCISCO HISTORIC PRESERVATION COMMISSION  
ARCHITECTURAL REVIEW COMMITTEE MEETING – JUNE 6, 2018

**SWINERTON-POWER**  
a joint venture

SHAH KAWASAKI ■ ARCHITECTS

**Liftech**  
LIFTECH CONSULTANTS INC.



# PHOTOMONTAGE

EMBARCADERO PROMENADE LOOKING SOUTH (BEFORE)



Page 21

FIREBOAT STATION 35 AT PIER 22 ½  
SAN FRANCISCO HISTORIC PRESERVATION COMMISSION  
ARCHITECTURAL REVIEW COMMITTEE MEETING – JUNE 6, 2018

**SWINERTON-POWER**  
a joint venture

SHAH KAWASAKI ■ ARCHITECTS

**Liftech**  
LIFE TECHNOLOGIES



# PHOTOMONTAGE

EMBARCADERO PROMENADE LOOKING SOUTH (AFTER)



Page 22

FIREBOAT STATION 35 AT PIER 22 ½  
SAN FRANCISCO HISTORIC PRESERVATION COMMISSION  
ARCHITECTURAL REVIEW COMMITTEE MEETING – JUNE 6, 2018

**SWINERTON-POWER**  
a joint venture

SHAH KAWASAKI ■ ARCHITECTS

**Liftech**  
LIFTECH CONSULTANTS INC.



# PHOTOMONTAGE

HARRISON STREET CORRIDOR LOOKING EAST (EXISTING)



Page 23

FIREBOAT STATION 35 AT PIER 22 ½  
SAN FRANCISCO HISTORIC PRESERVATION COMMISSION  
ARCHITECTURAL REVIEW COMMITTEE MEETING – JUNE 6, 2018

**SWINERTON-POWER**  
a joint venture

SHAH KAWASAKI ■ ARCHITECTS

**Liftech**  
LIFTECH CONSULTANTS INC.



# PHOTOMONTAGE

HARRISON STREET CORRIDOR LOOKING EAST (AS PROPOSED)



FIREBOAT STATION 35 AT PIER 22 ½  
SAN FRANCISCO HISTORIC PRESERVATION COMMISSION  
ARCHITECTURAL REVIEW COMMITTEE MEETING – JUNE 6, 2018

**SWINERTON-POWER**  
a joint venture

SHAH KAWASAKI ■ ARCHITECTS

**Liftech**  
LIFE TECH CONSULTANTS INC.



## PHOTOMONTAGE

RINCON PARK LOOKING SOUTH (BEFORE)



Page 25

FIREBOAT STATION 35 AT PIER 22 ½  
SAN FRANCISCO HISTORIC PRESERVATION COMMISSION  
ARCHITECTURAL REVIEW COMMITTEE MEETING – JUNE 6, 2018

**SWINERTON-POWER**  
a joint venture

SHAH KAWASAKI ■ ARCHITECTS

**Liftech**  
LIFTECH CONSULTANTS INC.



# PHOTOMONTAGE

RINCON PARK LOOKING SOUTH (AFTER)



FIREBOAT STATION 35 AT PIER 22 ½  
SAN FRANCISCO HISTORIC PRESERVATION COMMISSION  
ARCHITECTURAL REVIEW COMMITTEE MEETING – JUNE 6, 2018

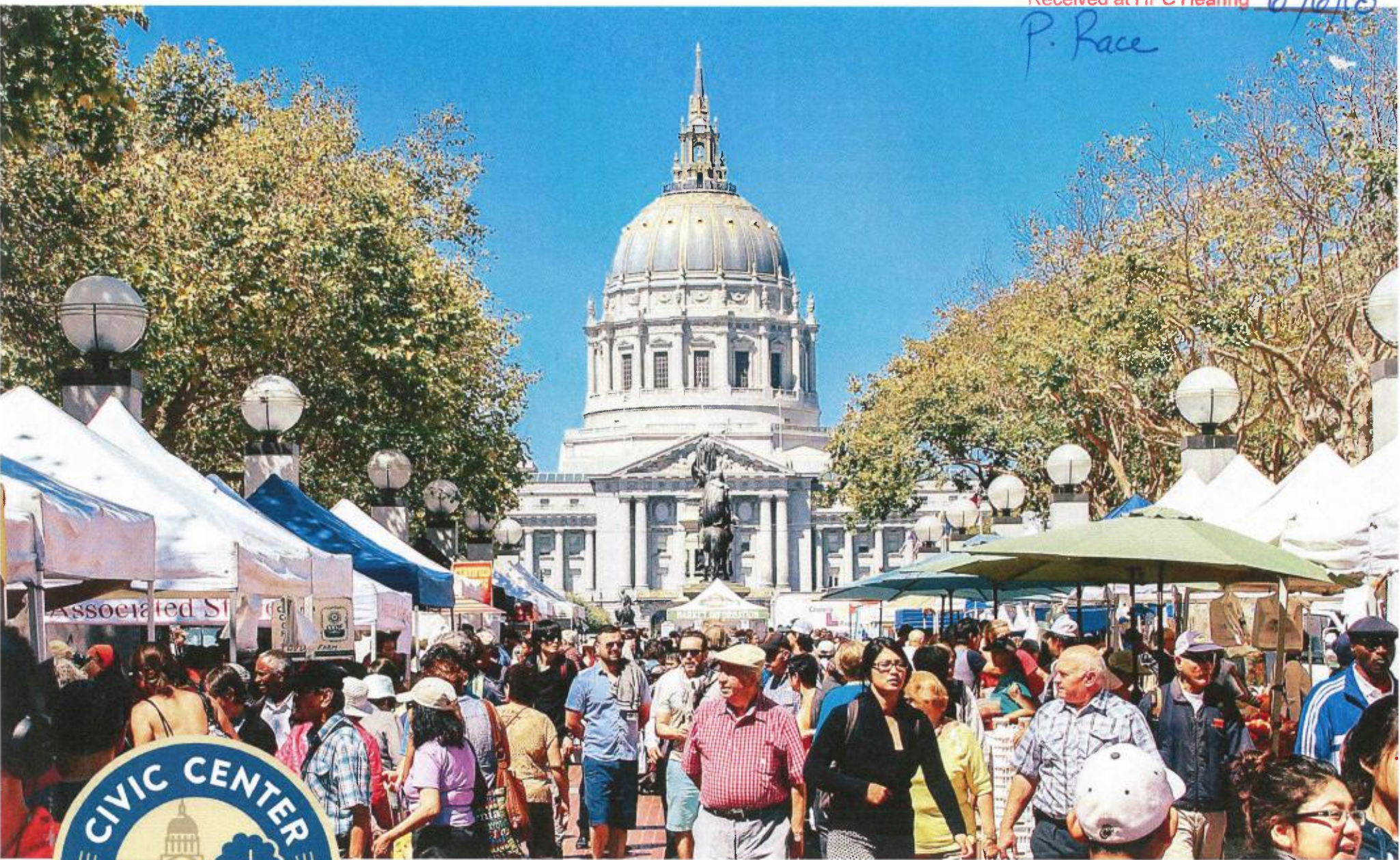
**SWINERTON-POWER**  
a joint venture

SHAH KAWASAKI ■ ARCHITECTS

**Liftech**  
LIFTECH CONSULTANTS INC.



P. Race



## CIVIC CENTER PUBLIC REALM PLAN UPDATE

JUNE 6, 2018 | SAN FRANCISCO ARCHITECTURAL REVIEW COMMITTEE

# PRESENTATION OVERVIEW

1. Project Background
2. Community Outreach
3. Street Design Overview
4. Public Space Design Overview
5. Discussion/Questions





# PROJECT BACKGROUND

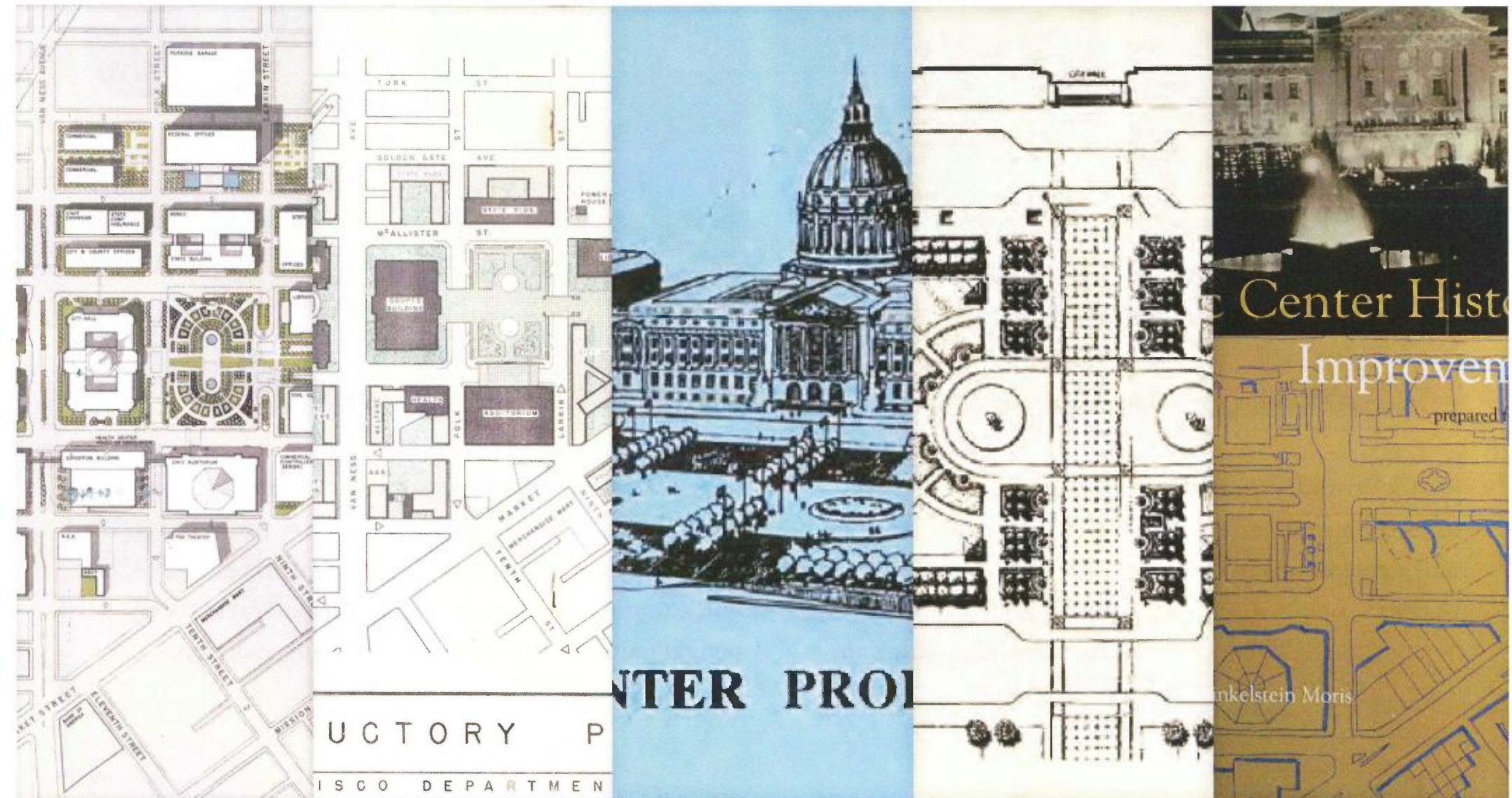
## PLANNING HISTORY

Civic Center was originally designed c. 1912 as a unified “Beaux Arts” district of grand government buildings and public spaces



## PLANNING HISTORY

There have been multiple plans for improving Civic Center's public spaces, but the most-recent is over 20 years old



## PLANNING HISTORY

Since the 1990s, the Civic Center area has grown as both an arts and culture district and as a residential neighborhood.



Photo Credit: flickr Ed & Eddie

ACT's Strand Theater is one of a number of new arts venues in Civic Center.



Photo Credit: SPUR

The conversion of 100 Van Ness from office to residential is one example of Civic Center's growing residential population.



Photo Credit: TNDC

New affordable housing, such as the TNDC's Eddy & Taylor Family Housing, will expand the number of people using Civic Center's open space.



Over 4,900 new housing units are projected in the Market Street Hub Area, near the Market/Van Ness intersection.

CIVIC CENTER PUBLIC REALM PLAN

## MAJOR MILESTONE: NEW CIVIC CENTER PLAYGROUNDS





The Civic Center Public Realm Plan will build off recent plans and studies and create one coordinated, interdepartmental plan for long-term improvements to the area's streets, plazas, and other public spaces.

## INTERAGENCY PROJECT TEAM:



## CONSULTANT TEAM:

---

Prime Consultant:



Landscape

Architecture

Sub-Consultant Team:

*Public Life,  
Tactical Projects &  
Urban Design:*

**Gehl**

*Economic Modeling  
& Management:*



*Architecture:*

KENNERLY ARCHITECTURE & PLANNING

*Historic Resources:*



*Outreach & Public  
Participation:*



*Structural  
Engineering*



*Mechanical,  
electrical, &  
plumbing*



*Lighting Design:*

JSN + ALD  
JS NOLAN + ASSOCIATES  
LIGHTING DESIGN, LLC

*Civil Engineering  
& Green  
Infrastructure:*

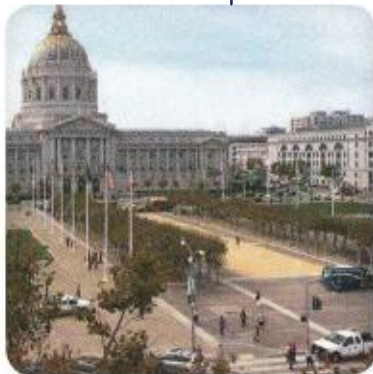
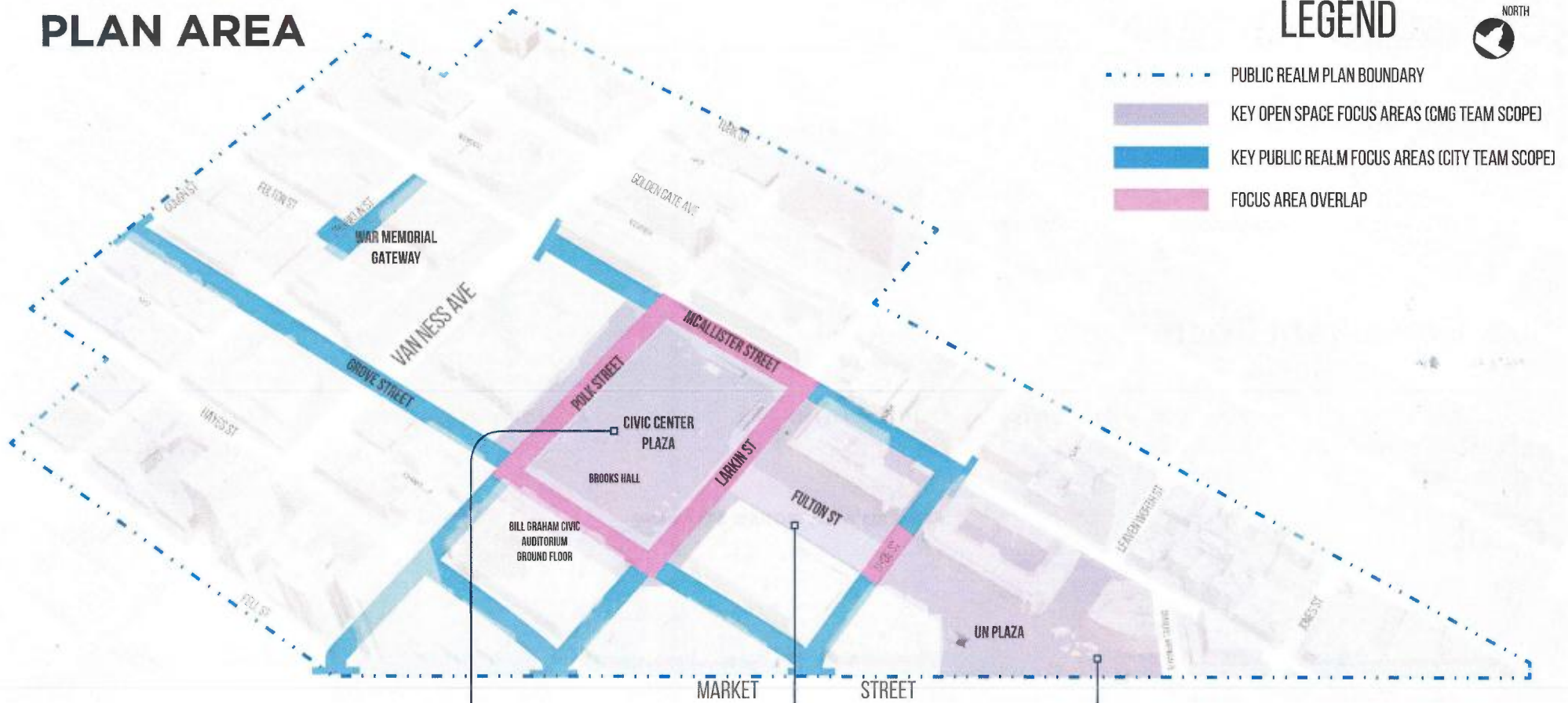


*Cost Estimation:*

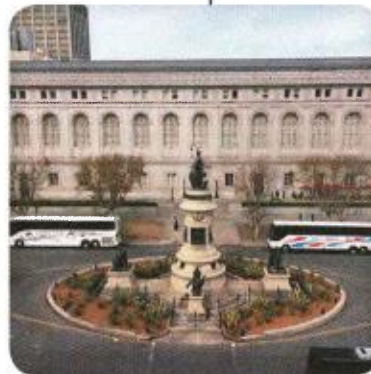
**M LEE CORPORATION**

Construction Management & Consulting  
Estimating & Scheduling

## PLAN AREA



Civic Center Plaza



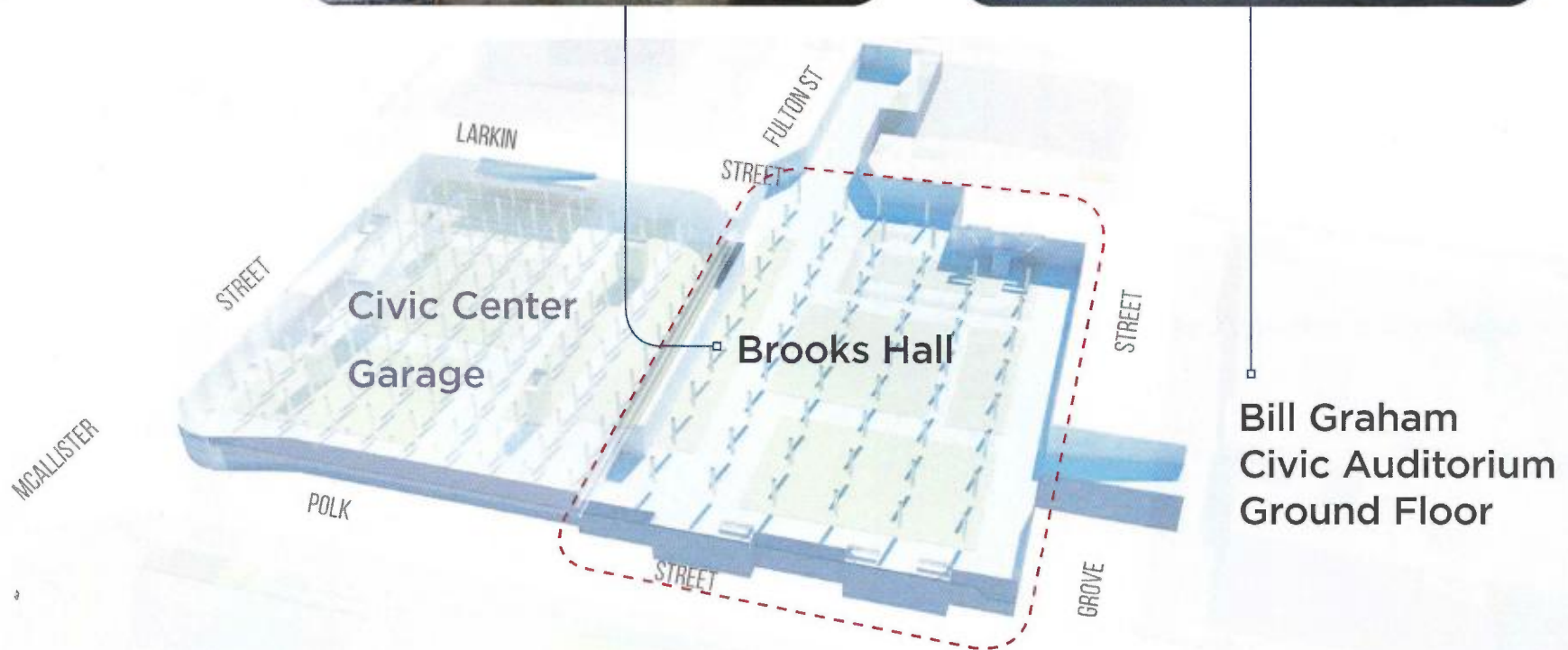
Fulton Mall



United Nations Plaza

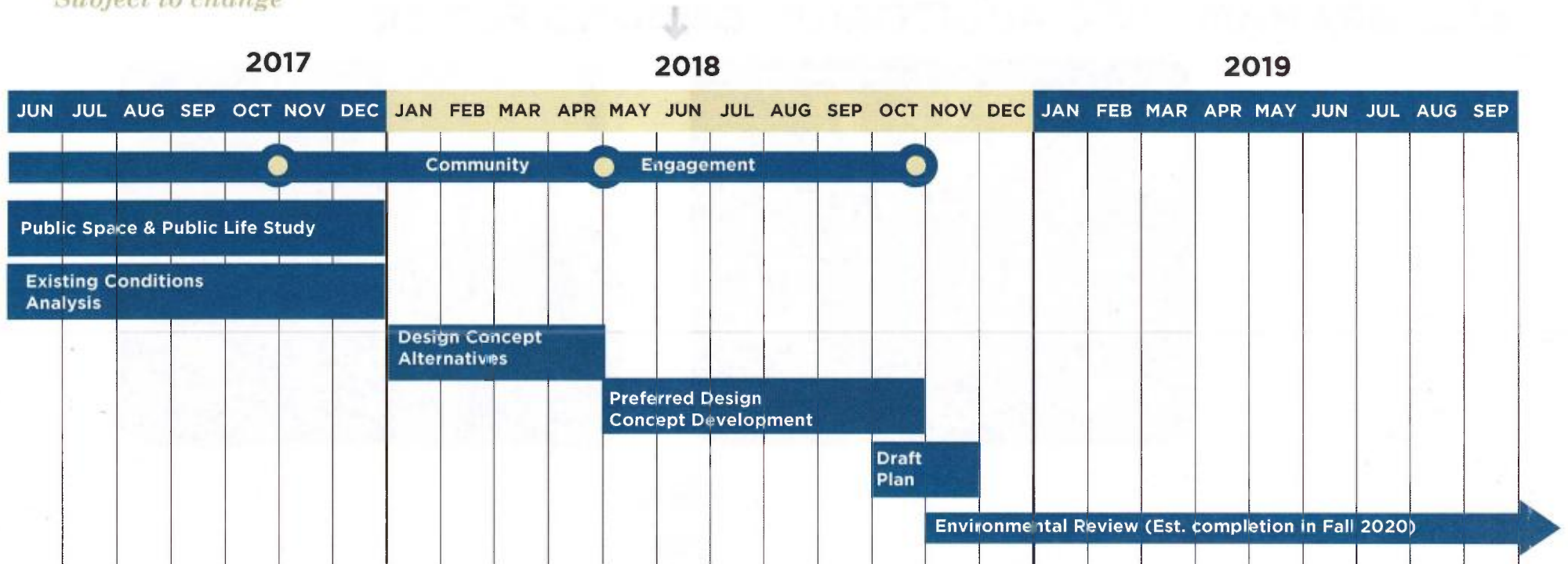
## BROOKS HALL &

## BILL GRAHAM CIVIC AUDITORIUM GROUND FLOOR



# PLAN TIMELINE

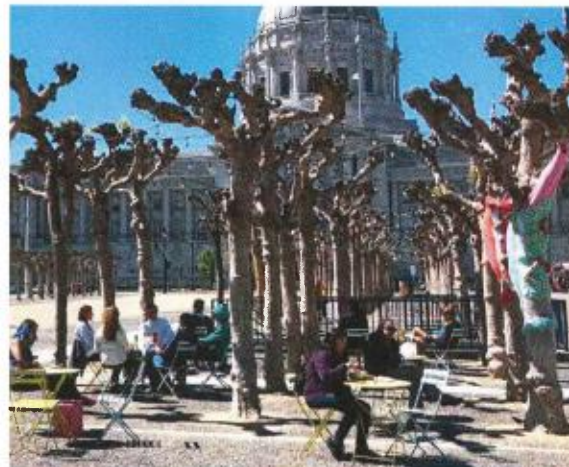
*Subject to change*



● = Community Workshop/Open House

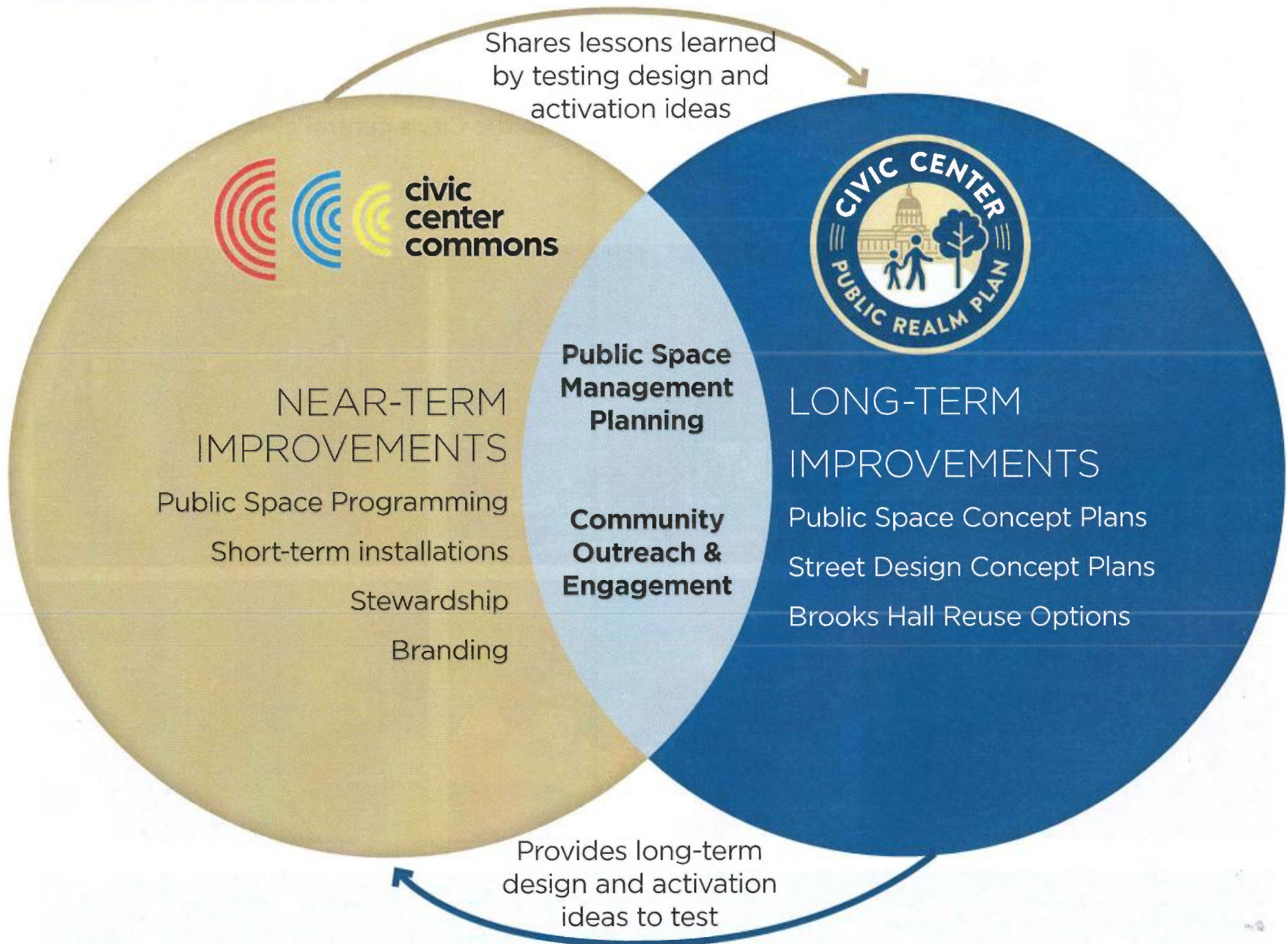


The Civic Center Commons Initiative is a collaborative effort to breathe new life into the City's central civic spaces.



# COMMONS + PUBLIC REALM PLAN COORDINATION

CIVIC CENTER PUBLIC REALM PLAN





# COMMUNITY OUTREACH

CIVIC CENTER PUBLIC REALM PLAN

**WELCOME!**

THE CIVIC CENTER PUBLIC REALM PLAN

歡迎!

市政中心公共區域計劃

أهلاً وسهلاً!

خطة الأماكن العامة في سيفيك سنتر

**MALIGAYANG PAGDATING!**

PLANO PARA SA MGA ESPASYONG MAGACAMIT NG PUBLIKO (PUBLIC REALM PLAN) SA CIVIC CENTER

**¡BIENVENIDO!**

PLAN PARA EL AMBIENTE PÚBLICO EN EL CENTRO CÍVICO

**XIN CHÀO QUÝ VỊ!**

KẾ HOẠCH CHO KHU VỰC CÔNG CÔNG CỦA TRUNG TÂM HÀNH CHÍNH

## OVER 50 COMMUNITY ORGANIZATION ENGAGED TO-DATE

826 Valencia (Tenderloin Center)

Arab American Grocer Association

Bay Area Women's and Children Center

Bayanihan Community Center

Boys and Girl Clubs Tenderloin - Teen Clubhouse  
& After School Program

Canon Kip Senior Center

Charity Cultural Services Center

Chinese Newcomers Service Center

Community Youth Center

Curry Senior Center

Glide Memorial Church

Hayes Valley Merchants/Neighborhood  
Association

Heart of the Farmer Market

Hospitality House

Independent Living Resource Center

Independent Living Skills Program

Instituto Familiar De La Raza, Inc.

La Voz Latina

Library for the Blind

LightHouse for the Blind and Visually Impaired

Mid Market CAP Community Ambassador Program

Mission Economic Development Association (MEDA)

Mission Hiring Hall

Mission Neighborhood Centers - Precita Center

Mission YMCA

Mujeres Unidas y Activas (MUA)

Project Homeless Connect

Safe House Arts

Safe Routes to School

Salvation Army Kroc Center

San Francisco Aids Foundation

San Francisco Public Library

Self Help for the Elderly

Senior & Disability Action

SF Bike Coalition

SF Day Labor Program and Women's Collective

SFLBGT Center

Shih Yu Lang Central YMCA (Boedekker Park)

South of Market Community Action Network  
(SOMCAN)

Southeast Asian Community Center

St. Anthony Foundation & Dining Room

St. Francis Living Room Foundation

St. Jude's Free Clothing Program

Sword for Plowshares

Tenderloin CBD Safe Passage

Tenderloin Community Benefit District

Tenderloin Housing Clinic

Tenderloin Neighborhood Development (TNDC)

The Central City SRO Collaborative

Tool Works

Vietnamese Youth Development Center

Walk SF

Woman Inc

Year Up

YMCA Chinatown

## IN-LANGUAGE & YOUTH FOCUS GROUPS



CIVIC CENTER PUBLIC REALM PLAN



Submitted by:  
InterEthnica, Inc.  
60 Rausch Street, Suite 307  
San Francisco, CA 94103

In an effort to get feedback and perspectives from communities sometimes under-represented at City outreach events, four focus group discussions were held with the local residents from the following communities in Fall 2017:

- Vietnamese (Conducted in Vietnamese)
- Chinese (Conducted in Chinese)
- Latino (Conducted in Spanish)
- Youth, Ages 13-17 (Conducted in English)

# COMMUNITY WORKING GROUP, MEETING #1, FEB. 22, 2018

CIVIC CENTER PUBLIC REALM PLAN



- Diverse group of community members from neighborhoods surrounding Civic Center
- In-depth conversations on materials shared at Workshop #1
- Two additional meetings planned

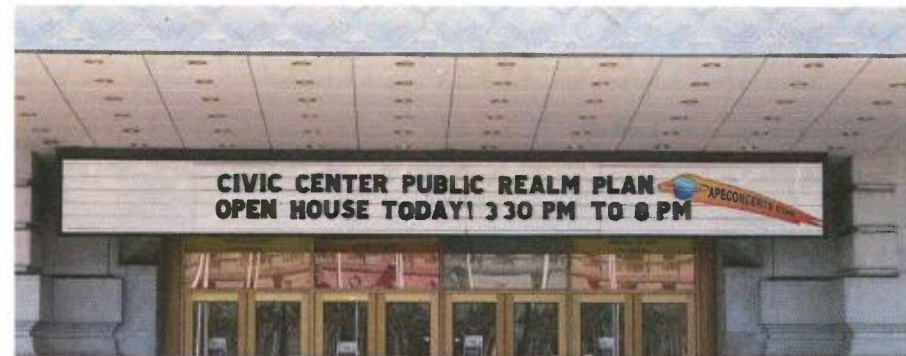
CIVIC CENTER PUBLIC REALM PLAN

# COMMUNITY OPEN HOUSES

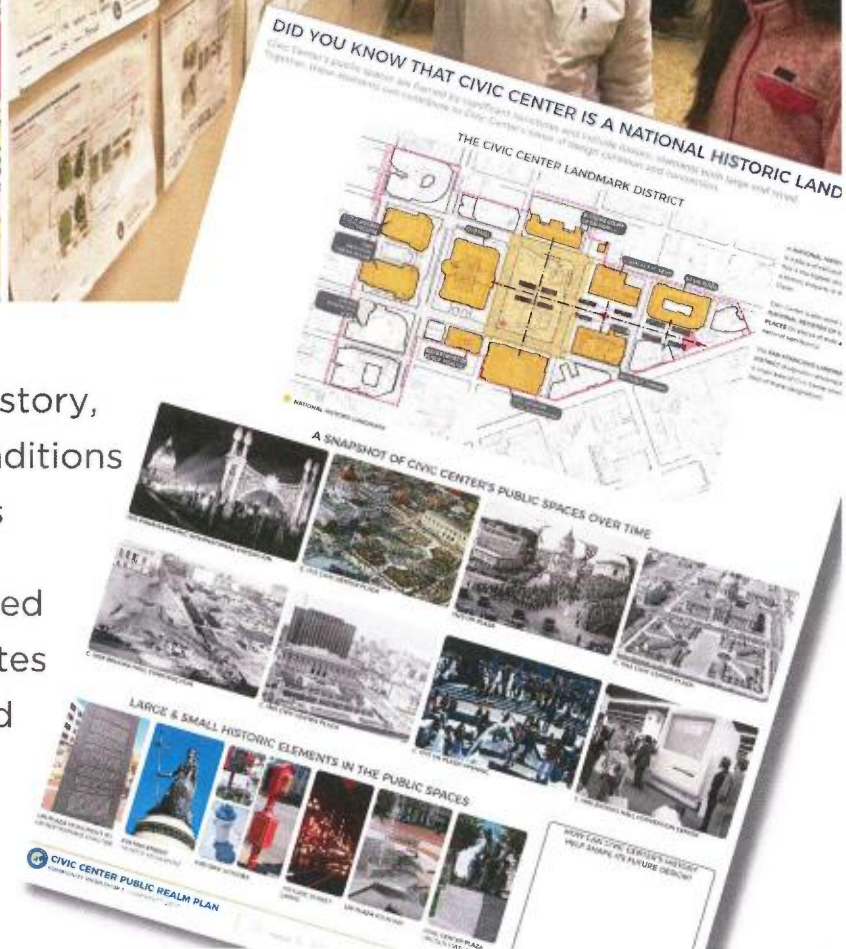
#1 NOVEMBER 7, 2017

#2 APRIL 24, 2018

#3 TBD - FALL 2018

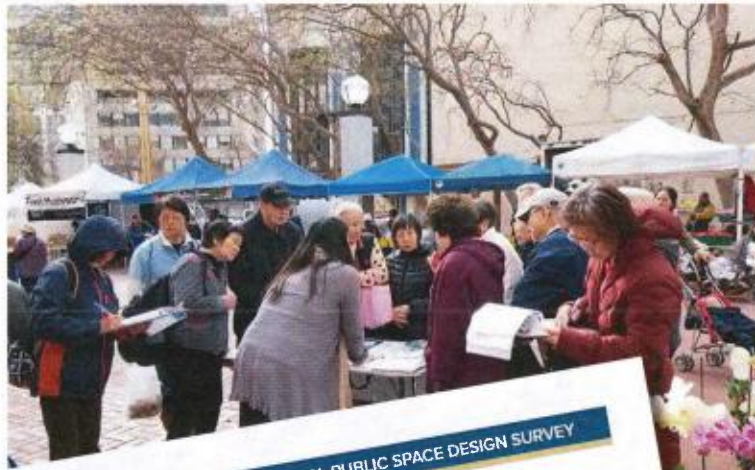


- Interactive stations describing project history, context, existing conditions analysis, and designs
- Attendees participated in small-group activities and created "mix and match" collage of their favorite public space design



# ONLINE & IN-PERSON SURVEY #1

CIVIC CENTER PUBLIC REALM PLAN



Survey designed to give people from throughout San Francisco a chance to share their thoughts on content originally shared at Workshop #1

**CIVIC CENTER PUBLIC REALM PLAN: PUBLIC SPACE DESIGN SURVEY**

**I. HOW DO YOU FEEL ABOUT THE CIVIC CENTER AREA?**

For the purposes of this survey, the Civic Center Area is the area outlined in the map below. The area is home to many prominent buildings like City Hall, Davies Symphony Hall, and the Main Library. At its center are major public spaces like Civic Center Plaza in front of City Hall.

The following questions are about the entire Civic Center area, as outlined in black on the map below.

**1. How often do you come to the Civic Center area?**

☐ Every Day    ☐ Several times per week    ☐ Several times per month    ☐ Several times per year    ☐ Rarely    ☐ Never

**2. In general, how do you FEEL about the Civic Center area?**

☐ Very negative    ☐ Somewhat negative    ☐ Neither negative nor positive    ☐ Somewhat positive    ☐ Very positive

**3. In general, how SAFE do you feel in the Civic Center area?**

☐ Very unsafe    ☐ Somewhat unsafe    ☐ Neither safe nor unsafe    ☐ Somewhat safe    ☐ Very safe

**4. How likely is it that you would bring someone to the Civic Center area?**

☐ Very unlikely    ☐ Somewhat unlikely    ☐ Neither unlikely nor likely    ☐ Somewhat likely    ☐ Very likely

Page 2 of 9

中文詢問電話: (415) 558-6282  
Para información en Español llamar al: (415) 558-6307

San Francisco Planning

- 280 In-Person intercept surveys (66% In-Language)
- Over 2,000 online survey responses
- Findings are being incorporated into design concepts

# MOBILE OUTREACH STATION

CIVIC CENTER PUBLIC REALM PLAN



Mobile Outreach Station with large-scale aerial map of Civic Center designed to engage community members in the spaces and events where they already gather

Mobile Outreach Station Events To-Date:

- CCC – Third Thursdays – 10/19/2017
- Civic Center Tree Lighting – 12/5/2017
- Heart of the City Farmer's Market – 2/7/2018
- CCC – First Sundays – 2/4/2018
- Helen Diller Civic Center Playground Opening – 2/14/2018



# STREET DESIGN OVERVIEW

# STREET DESIGN FOCUS AREAS

CIVIC CENTER PUBLIC REALM PLAN



# STREETS TODAY

CIVIC CENTER PUBLIC REALM PLAN

APRIL 2014

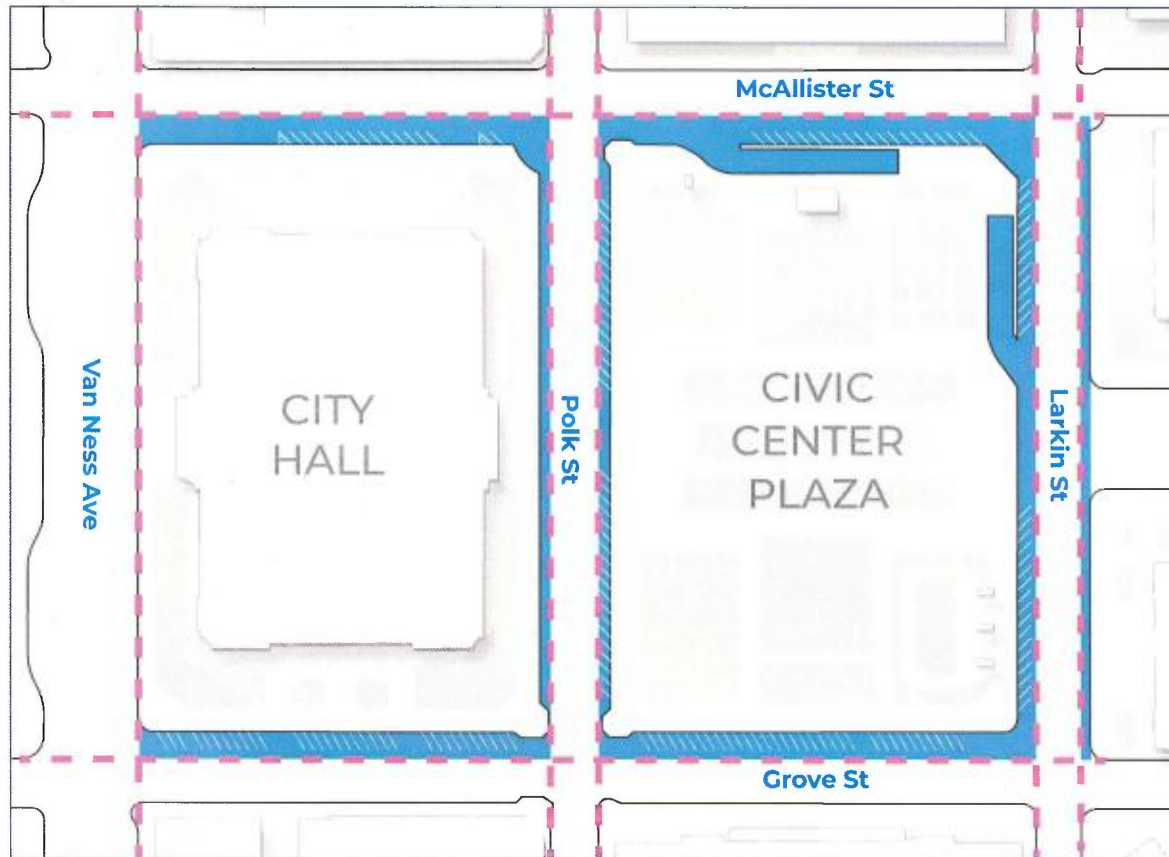
HKS



- Wide roadways, especially at Civic Center Plaza
- Key corridors for all modes of travel
- Most streets are high-injury corridors
- Loading and drop-off needs are high

# CIVIC CENTER PLAZA EDGES

CIVIC CENTER PUBLIC REALM PLAN



Typical sidewalk curb line

Area of block used for parking today

City Hall and Civic Center Plaza's roadways were originally designed to be extra wide, ceremonial spaces.

The blocks were shrunk to accommodate the extra wide roadways.

Today, this extra roadway space is mostly used for parking.

# CIVIC CENTER PLAZA EDGES

CIVIC CENTER PUBLIC REALM PLAN

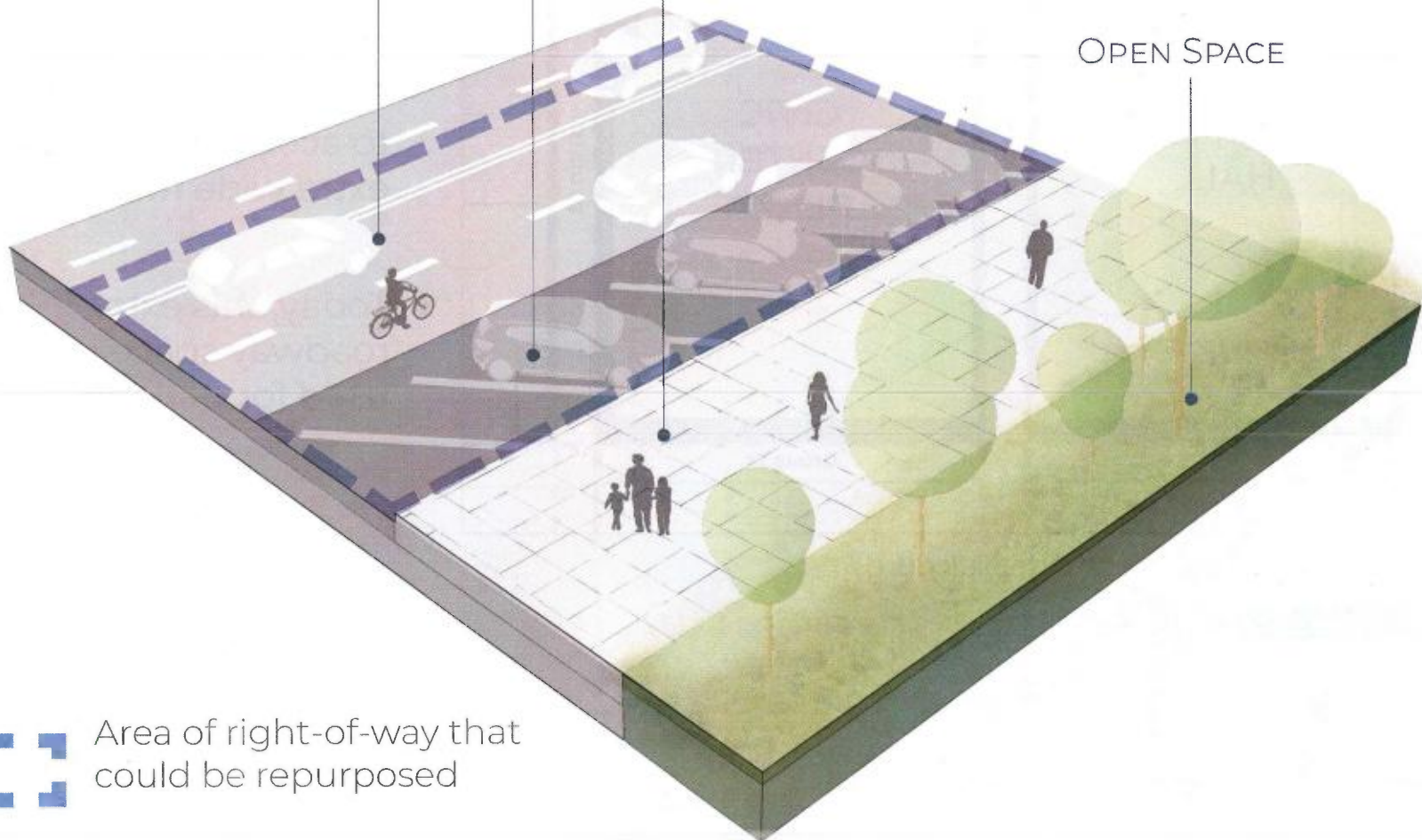
## Typical Civic Center Plaza Block Edge Condition

MULTIPLE TRAVEL LANES, sometimes more than are needed

PARKING, often angled, and of varying occupancy

SIDEWALKS, wide but empty, devoid of amenities

OPEN SPACE



Area of right-of-way that  
could be repurposed

# CIVIC CENTER PLAZA EDGES

CIVIC CENTER PUBLIC REALM PLAN

## Potential New Block Edge Conditions

PARK EXPANSION

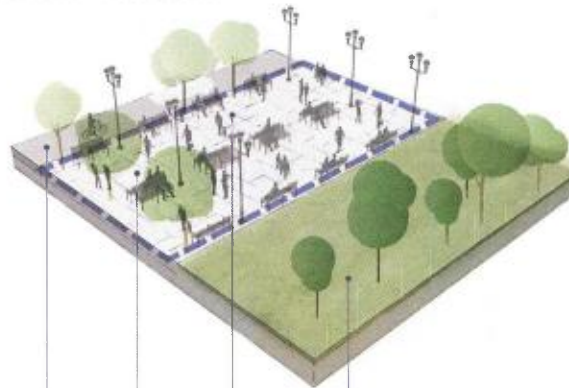


MORE PUBLIC SPACE

REALIGNED SIDEWALKS

NARROWED AND REDESIGNED ROADWAY

GRAND PROMENADE



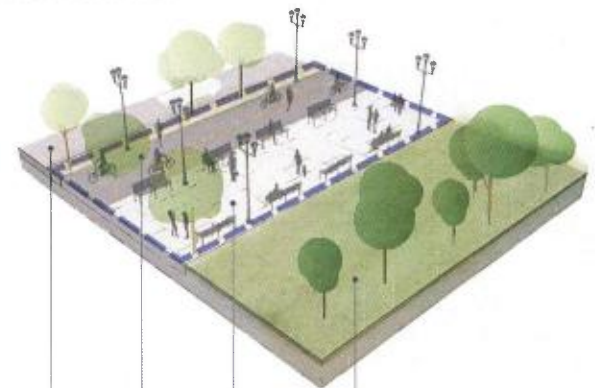
MORE PUBLIC SPACE

GRAND PEDESTRIAN PROMENADE

REALIGNED AND ENHANCED SIDEWALKS

NARROWED AND REDESIGNED ROADWAY

MULTI-USE PATH



MORE PUBLIC SPACE

PARTIALLY REALIGNED SIDEWALK

WIDE NEW MULTI-USE BIKE PATH

NARROWED AND REDESIGNED ROADWAY

KIOSK ACTIVATION



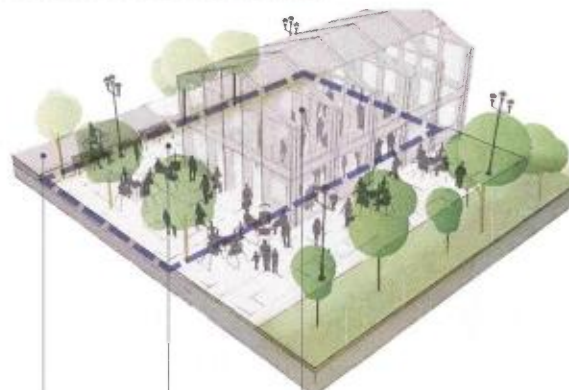
PARK KIOSKS

MORE PUBLIC SPACE

REALIGNED AND ENHANCED SIDEWALKS

NARROWED AND REDESIGNED ROADWAY

MARKET/PAVILION ACTIVATION



PARK PAVILION

REALIGNED AND ENHANCED SIDEWALKS

NARROWED AND REDESIGNED ROADWAY

FLEXIBLE ACTIVATION ZONE



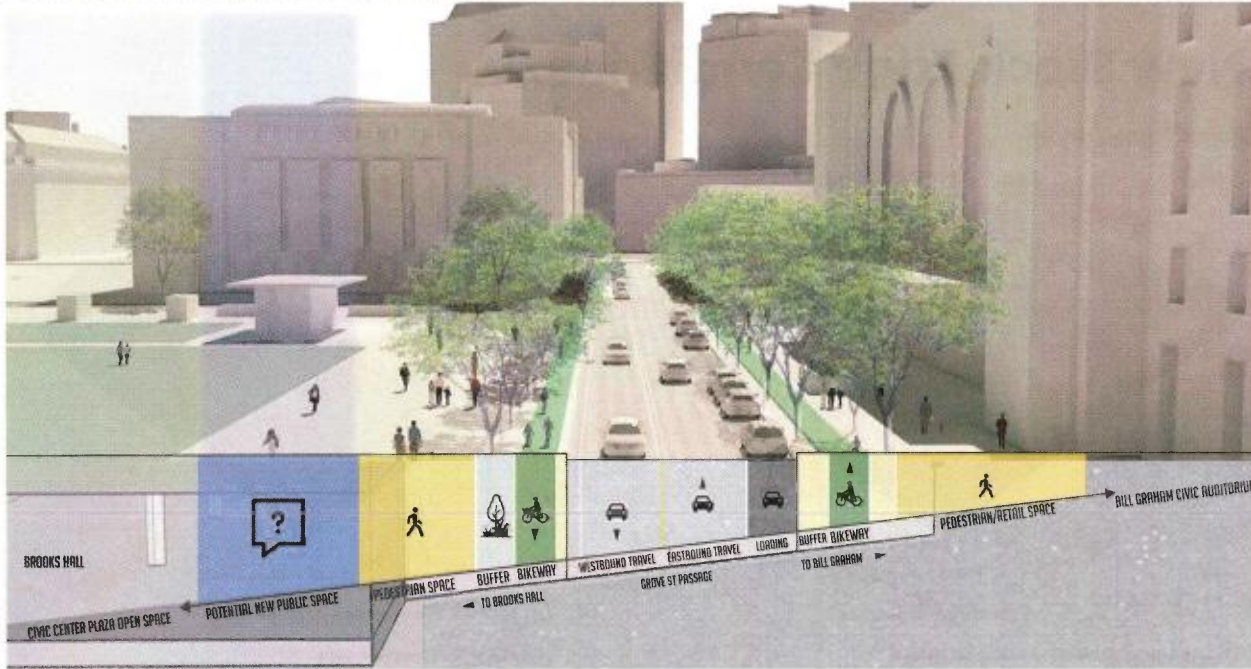
FLEXIBLE PAVED PLAZA SPACE

REALIGNED AND ENHANCED SIDEWALKS

NARROWED AND REDESIGNED ROADWAY

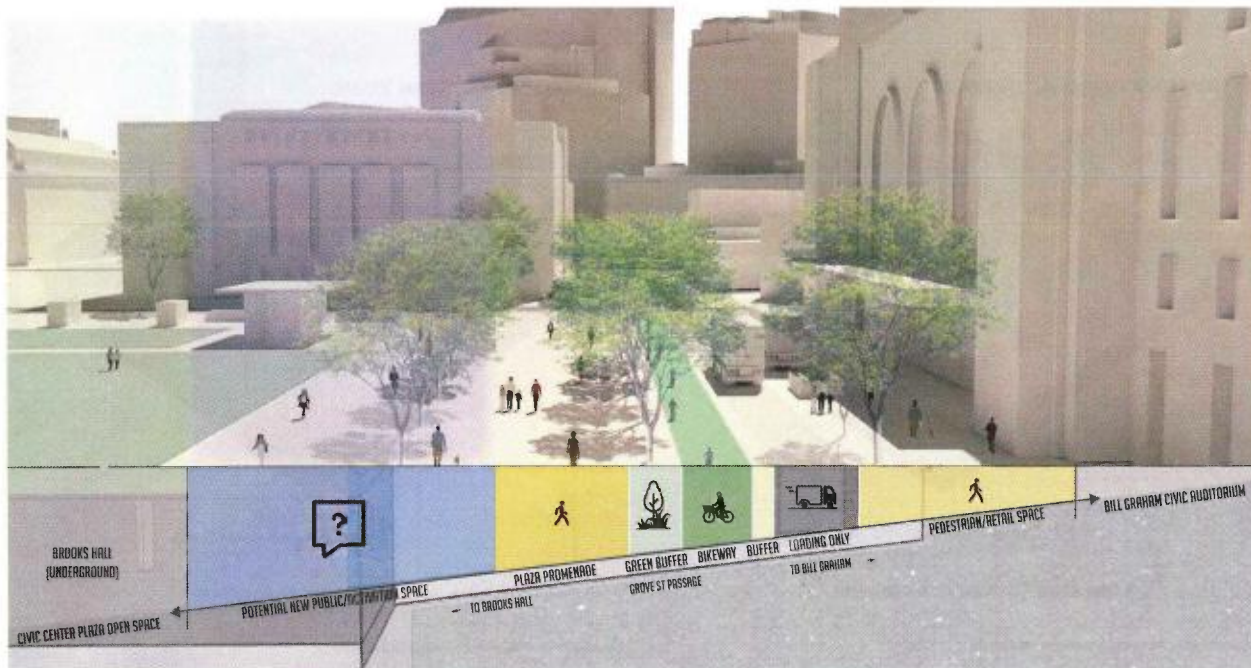
# GROVE STREET DESIGN OPTIONS

## CIVIC CENTER PUBLIC REALM PLAN



## COMPLETE STREET

The **“Complete Street”** option maintains one vehicle lane in each direction and reduces the amount of on-street parking. This allows for sidewalk widening and/or plaza expansion, protected bike lanes, and loading zones.

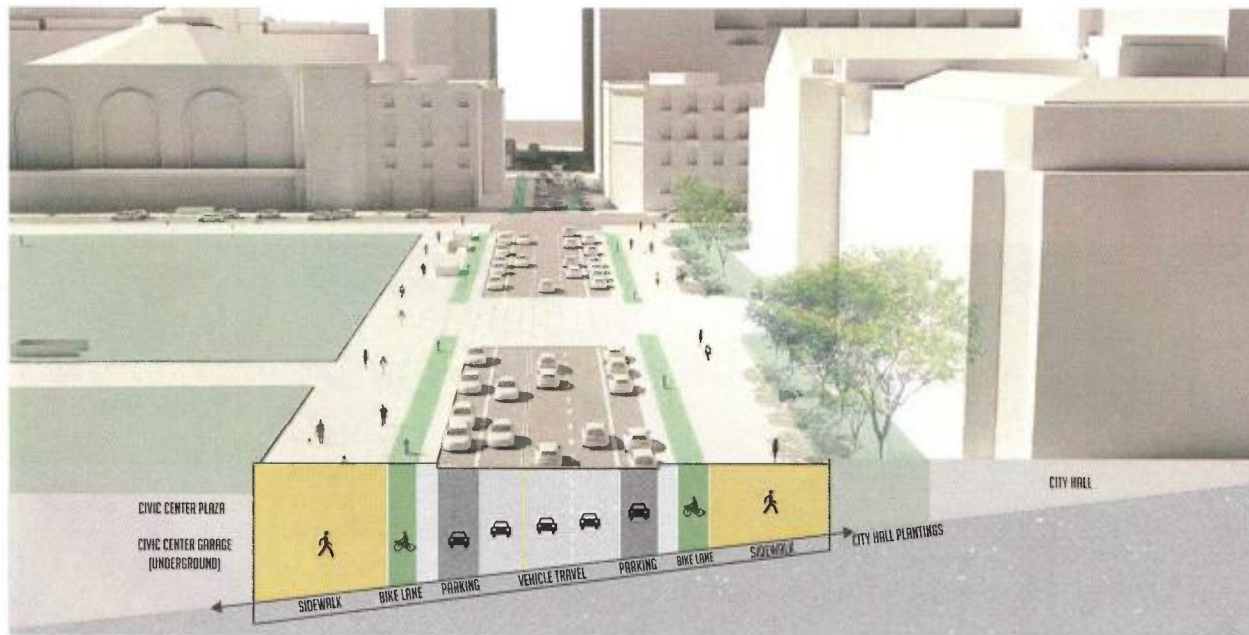


## PLAZA PROMENADE

The **“Plaza Promenade”** option replaces parking with loading zones, a two-way bike path, and major sidewalk widening. Along the edge of Civic Center Plaza, vehicle access is limited to a loading-only lane. The rest of the roadway in front of Civic Auditorium becomes public space.

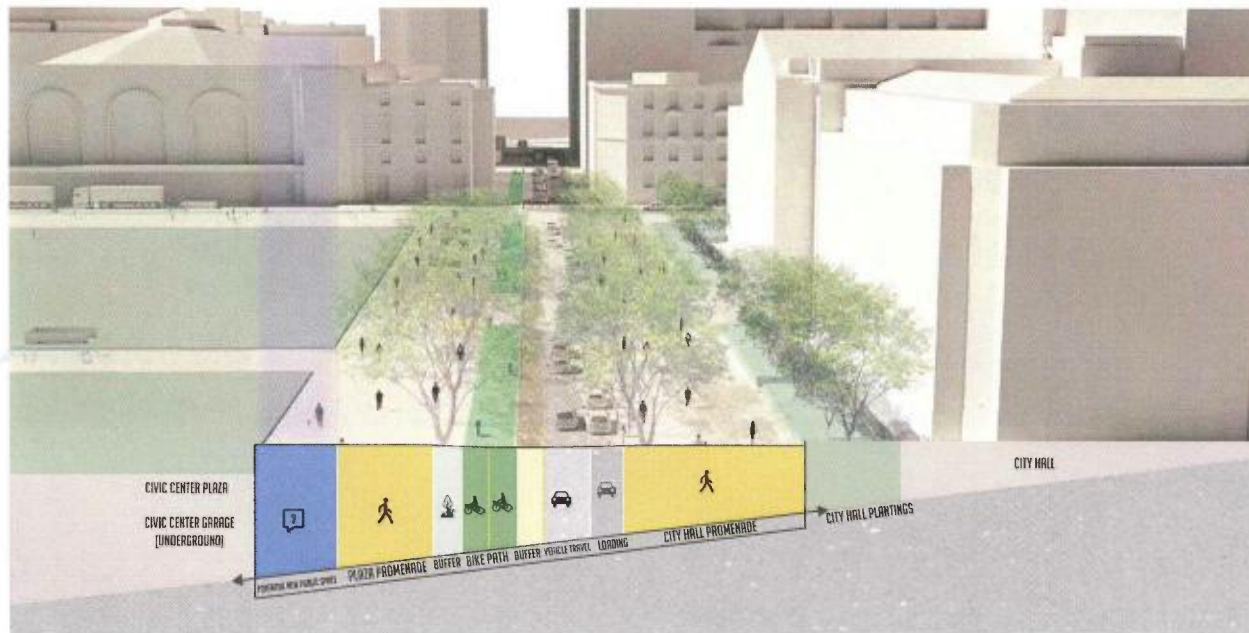
# POLK STREET (DR. C.B. GOODLETT PLACE) DESIGN OPTIONS

CIVIC CENTER PUBLIC REALM PLAN



## COMPLETE STREET

The **“Complete Street”** option would calm Polk St by reconfiguring parking to free up space for widened sidewalks and parking-protected bike lanes.



## PLAZA PROMENADE

The **“Plaza Promenade”** option would transform Polk Street by expanding the plaza, widening sidewalks, adding a two-way bike path, and maintaining one south-bound travel lane.

# WAR MEMORIAL GATEWAY

CIVIC CENTER PUBLIC REALM PLAN

TODAY

---

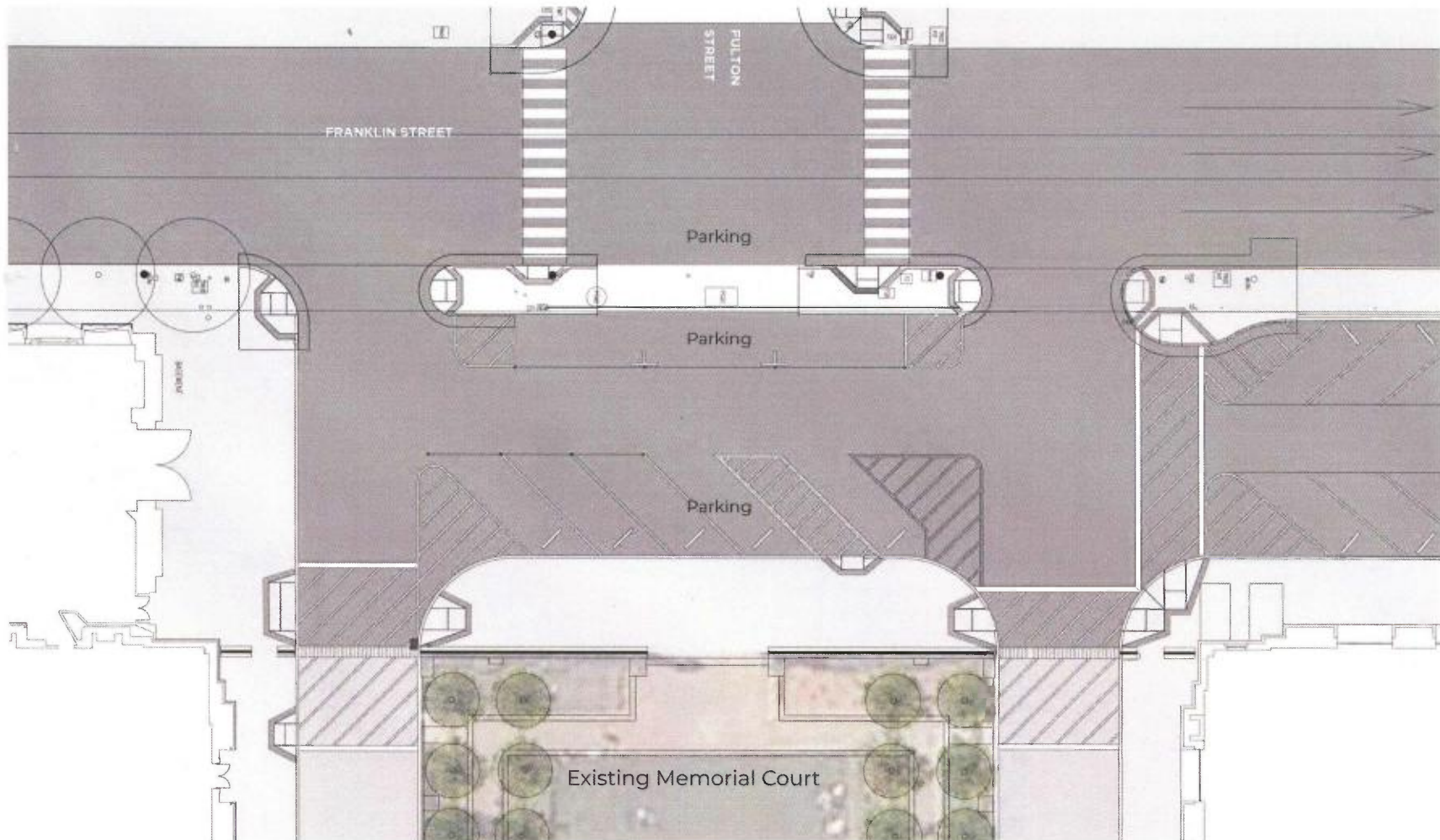


# WAR MEMORIAL GATEWAY

CIVIC CENTER PUBLIC REALM PLAN

## EXISTING DESIGN

---



# WAR MEMORIAL GATEWAY

CIVIC CENTER PUBLIC REALM PLAN

## CONCEPTUAL DESIGN

Improvements under-study for the Franklin/  
Fulton intersection and western entrance to  
the War Memorial Courtyard





# **PUBLIC SPACE DESIGN OVERVIEW**

# VISION:

**Civic Center is a 21<sup>st</sup>-century commons for all San Franciscans to be proud of; a civic gathering place that welcomes everyday use.**



## civ·ic cen·ter

'sivik' 'sen(t)ər'

adjective

noun

*Synonyms: city, town, urban, metropolitan*

*Synonyms: middle, nucleus, heart, core, hub*

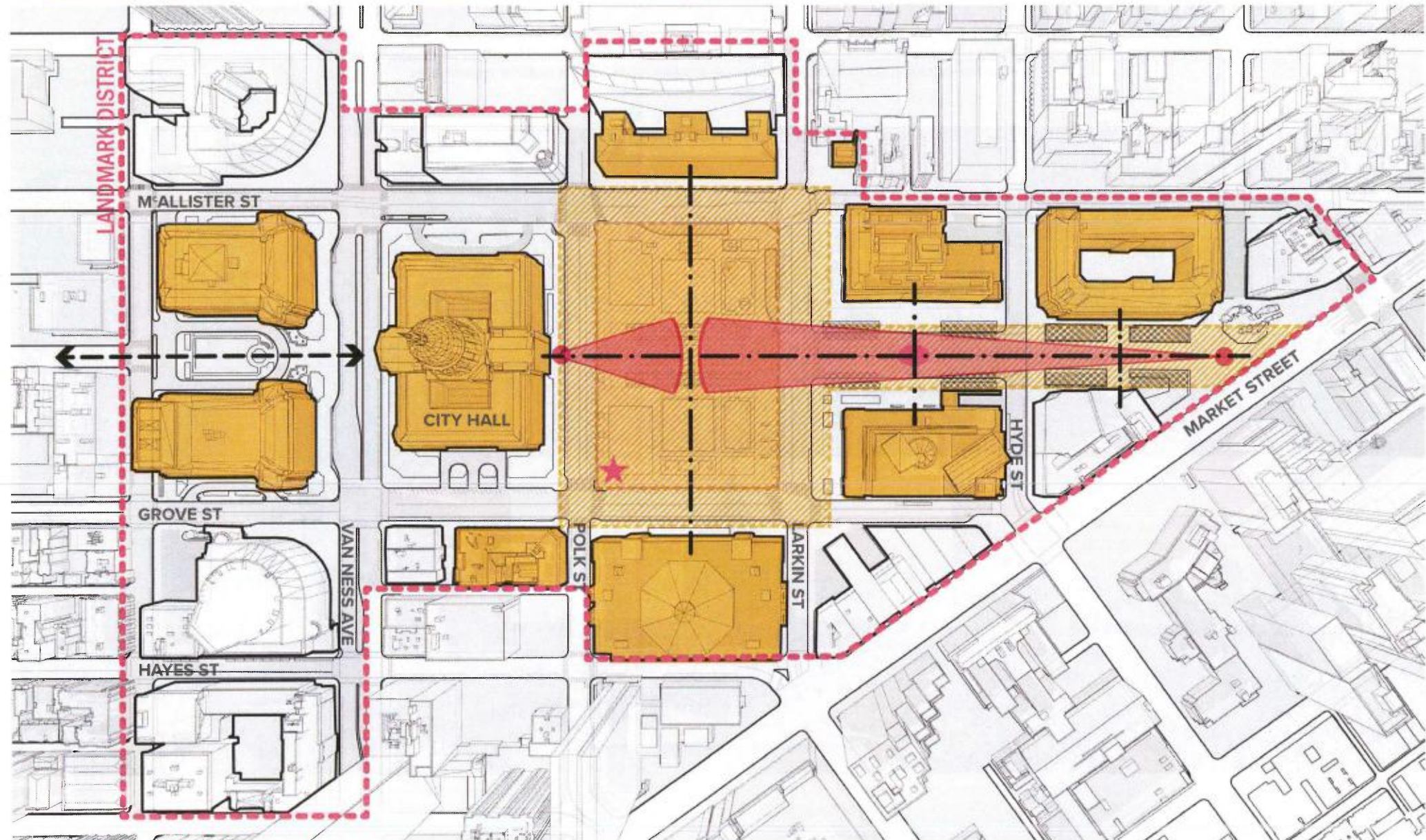
Relating to the duties or activities of people in relation to their town, city, or local area—civic pride; civic duty.

The point from which an activity or process is directed, or on which it is focused; a region of concentrated population—an urban center.

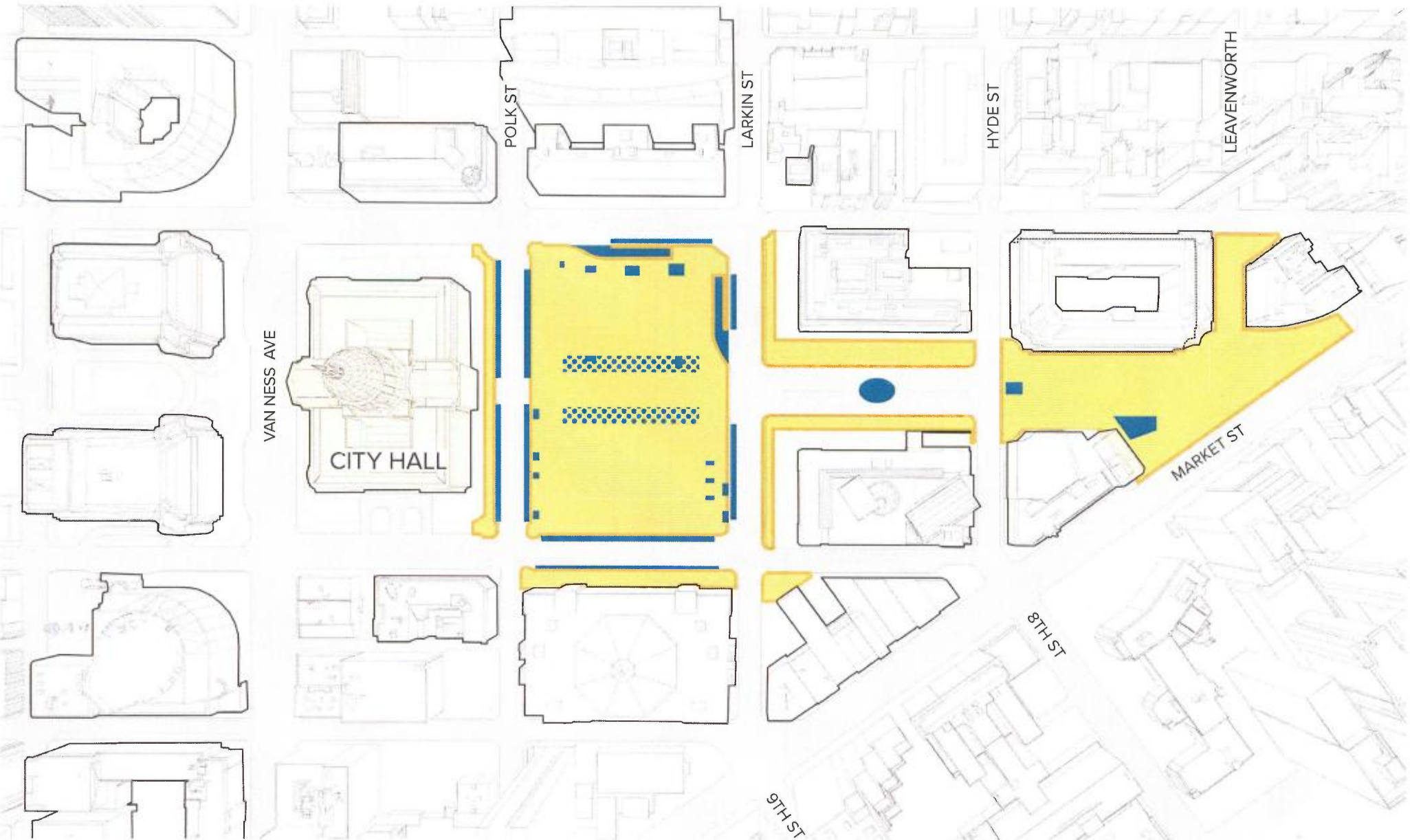


# Landmark District Resources + Relationships

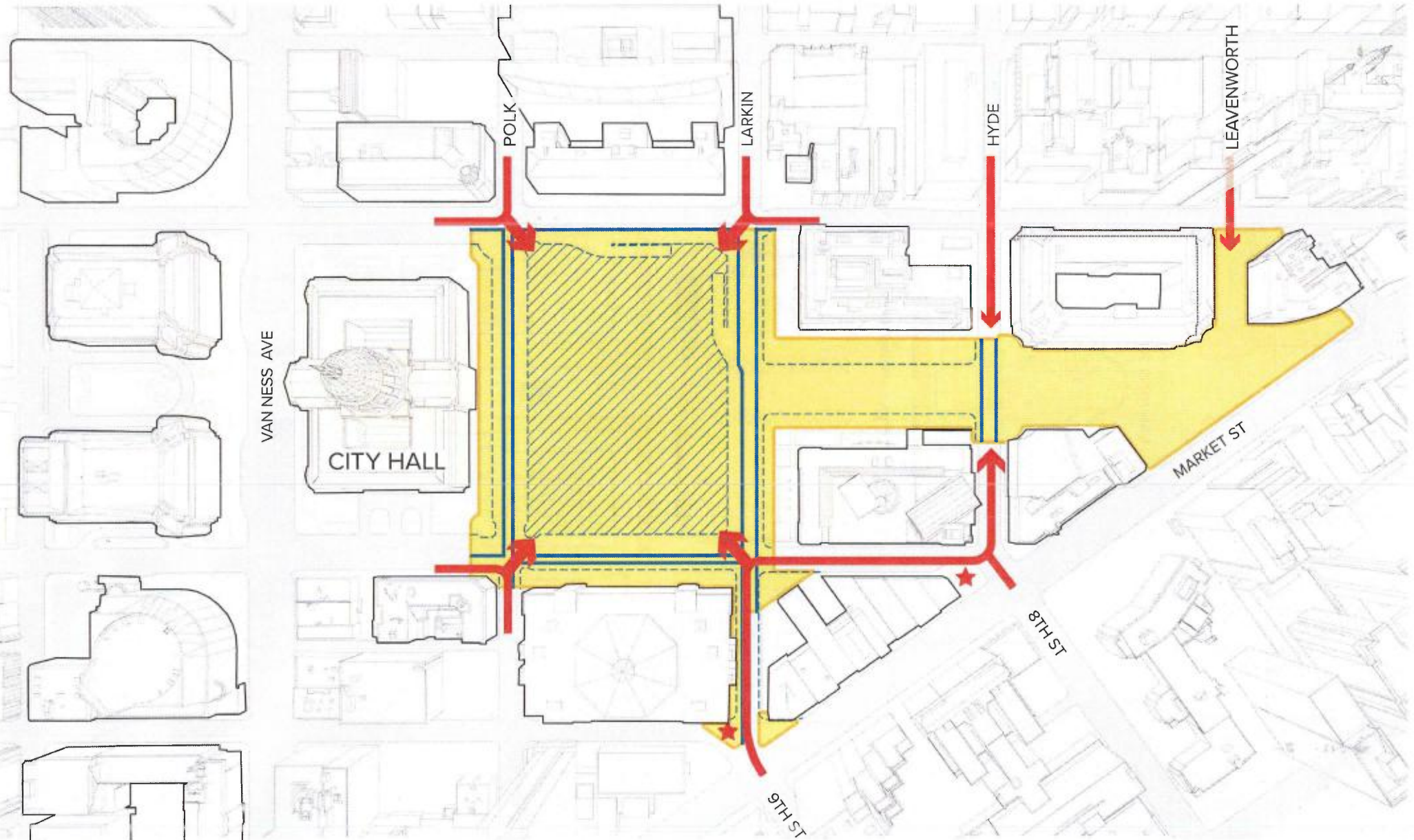
 National Historic Landmark     Open Space     Key Element     Axial Relationship     Framed View



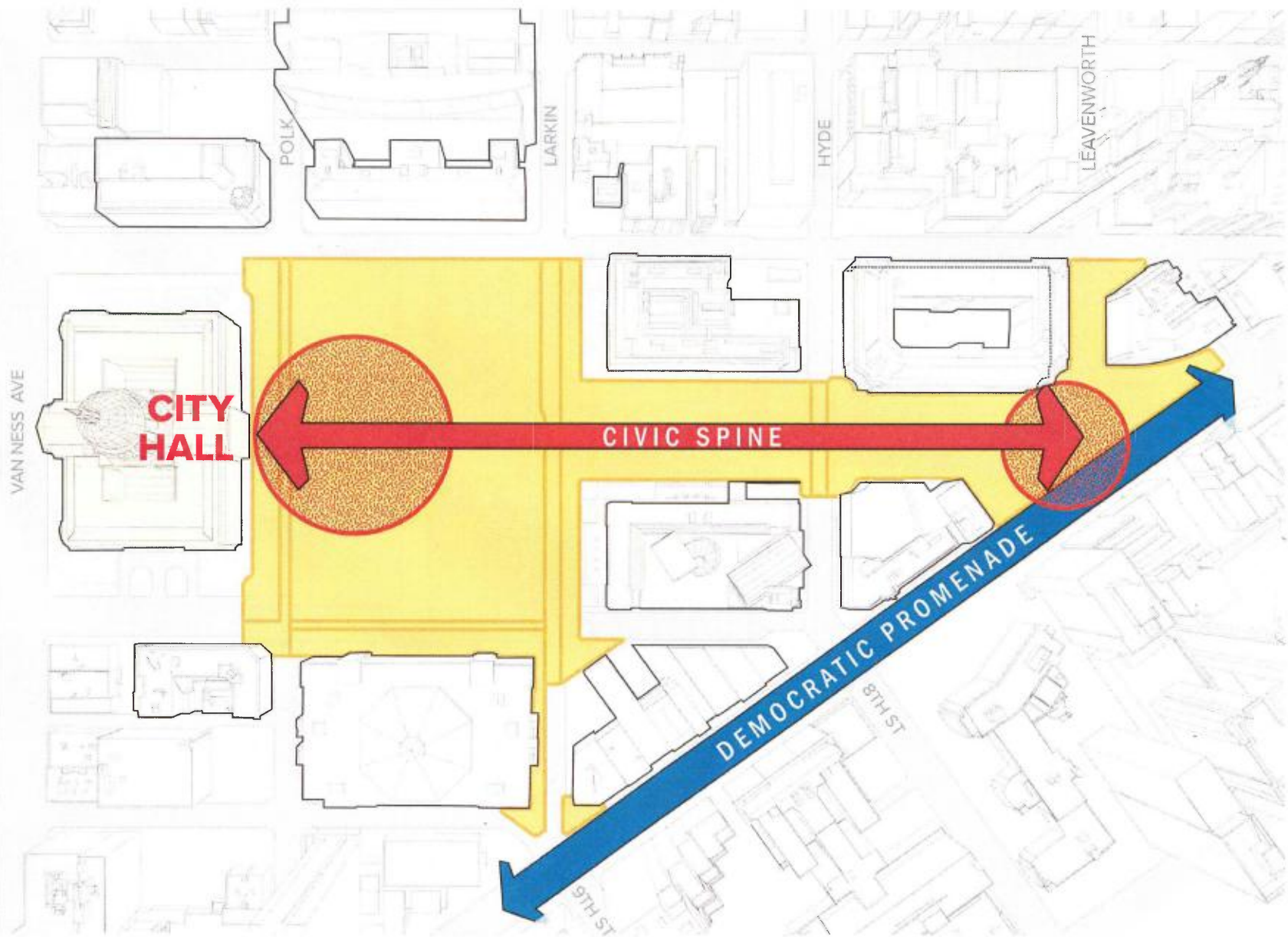
# Civic Center Today



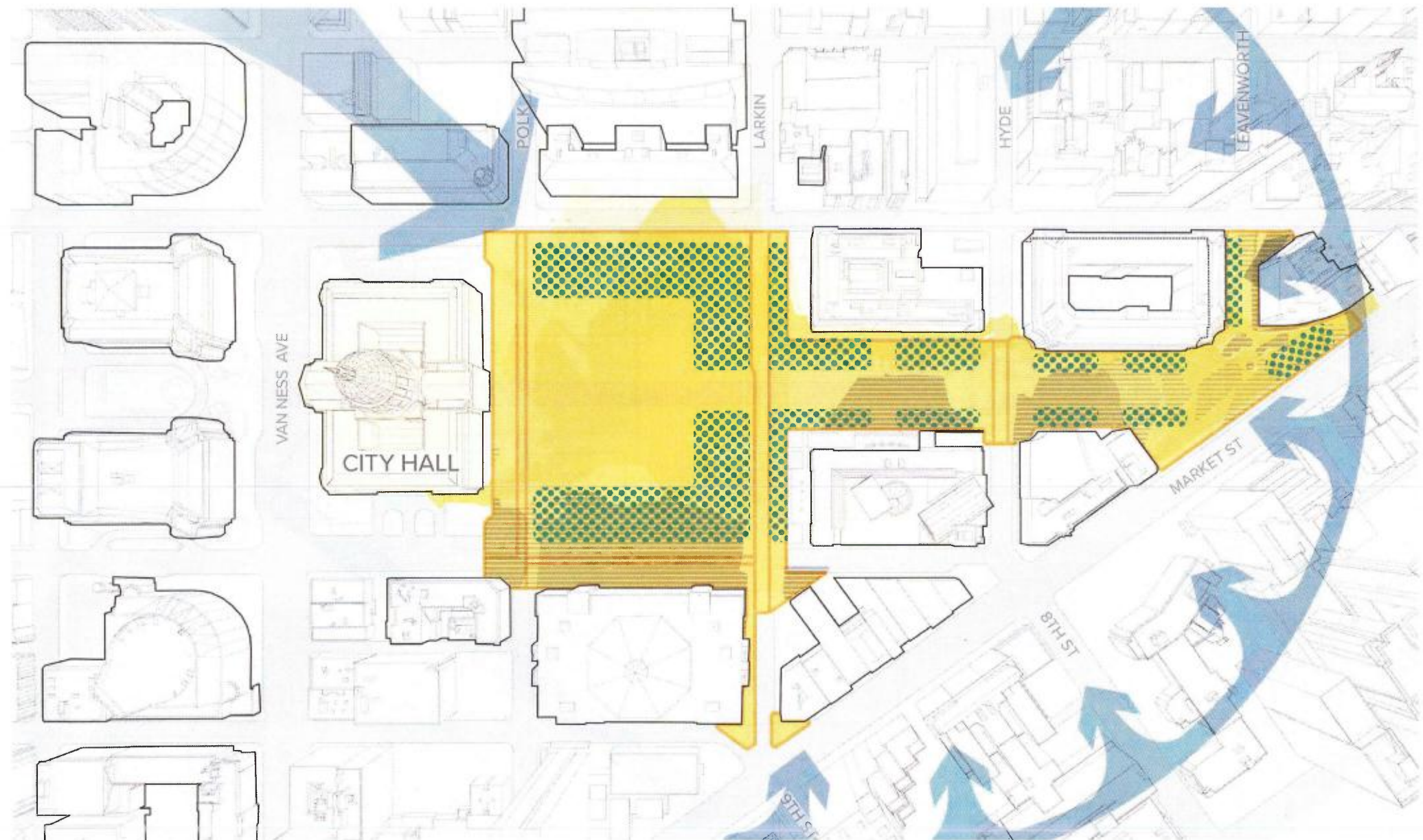
# Unify the Public Realm



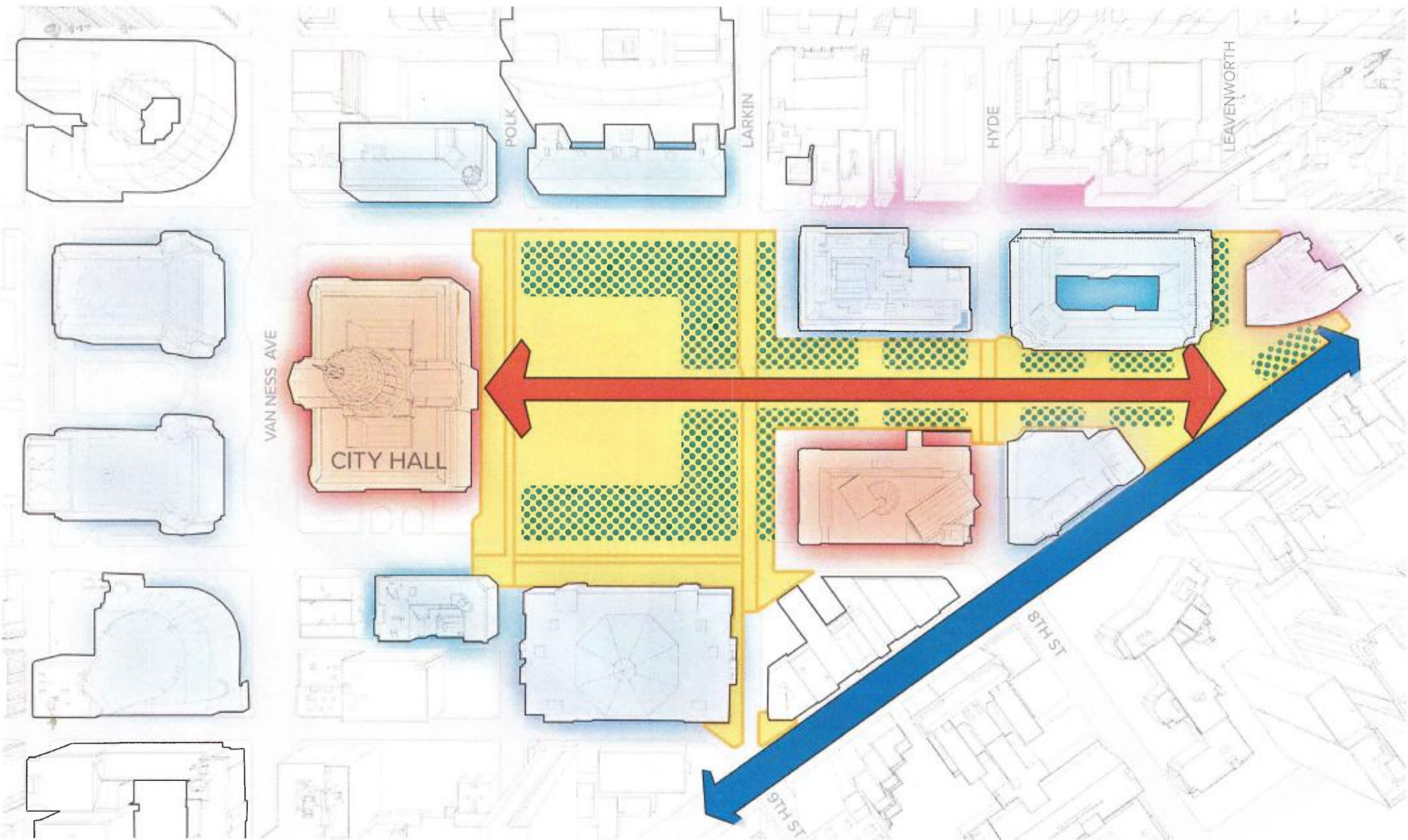
# Accommodate Civic Gatherings



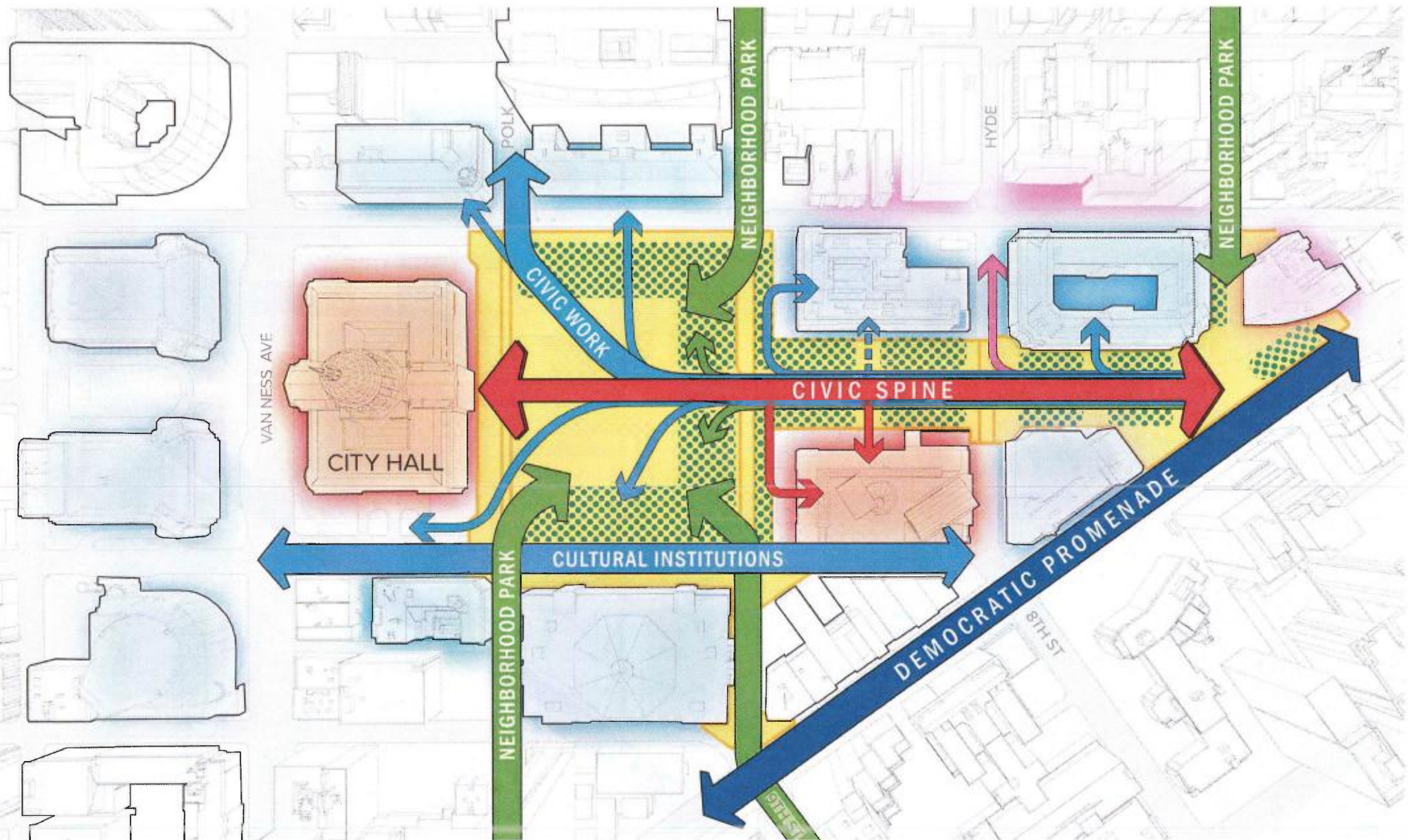
# Block Wind & Enhance Sunny Locations



# Enclose Spaces, Frame Views, & Enhance Edges



# Make Places that Invite People & Public Life

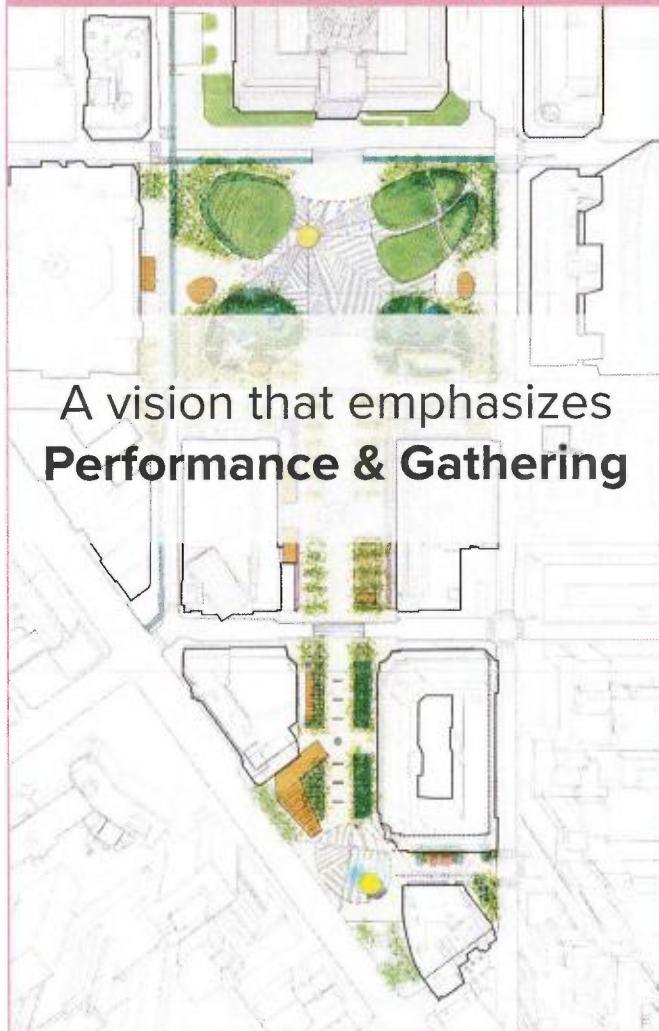


# Three Framework Plans

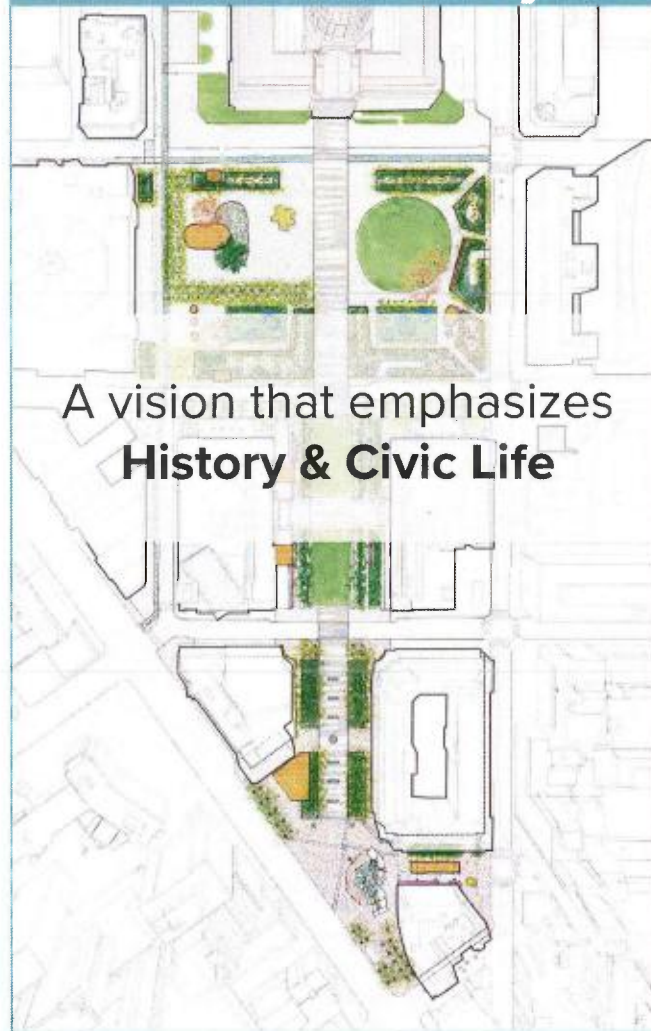


# Three Visions for a New Commons

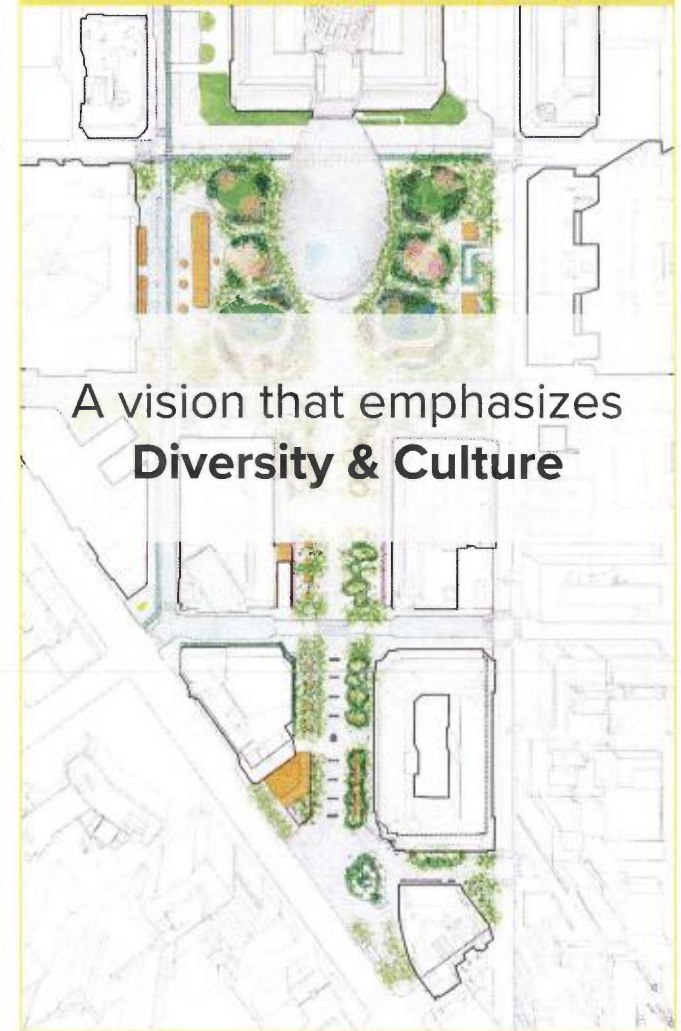
## Public Platform



## Civic Sanctuary



## Culture Connector



# Civic Center Plaza

## Public Platform



## Civic Sanctuary



## Culture Connector



### Shared Features

- Helen Diller Civic Center Playgrounds
- Large Flexible Spaces for Civic Gatherings
- Kiosks/Pavilion Buildings + Underground Access
- Basic Amenities (e.g., restrooms, seating)

## Fulton Mall

Public Platform



Civic Sanctuary



Culture Connector



### Shared Features

- Road Closure for New Public Space / Mall
- Civic Axis Monument Relocation
- Uses that Complement Adjacent Institutions
- Basic Amenities (e.g., restrooms, seating)

## UN Plaza

### Public Platform



### Civic Sanctuary



### Culture Connector

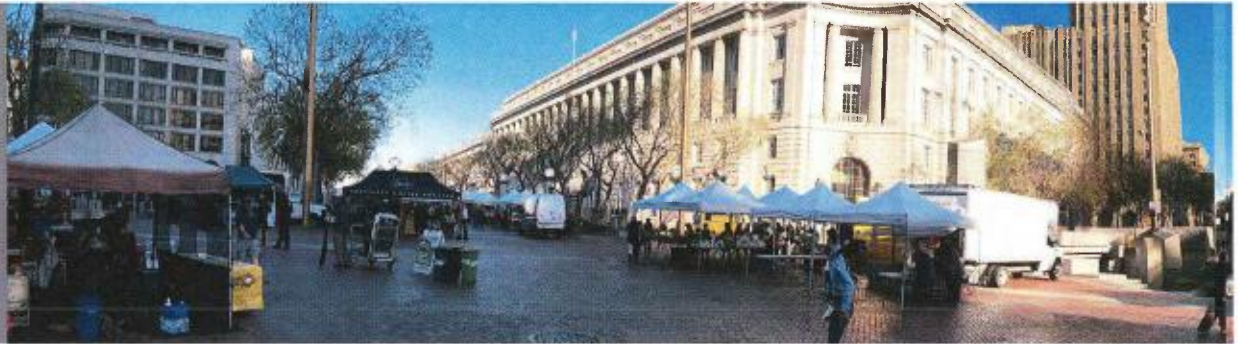


### Shared Features

- Civic Axis Monument Relocation
- Civic Center Station Building (with BART)
- New Gateway at Leavenworth St
- Basic Amenities (e.g., restrooms, seating)

# UN Plaza View Comparisons

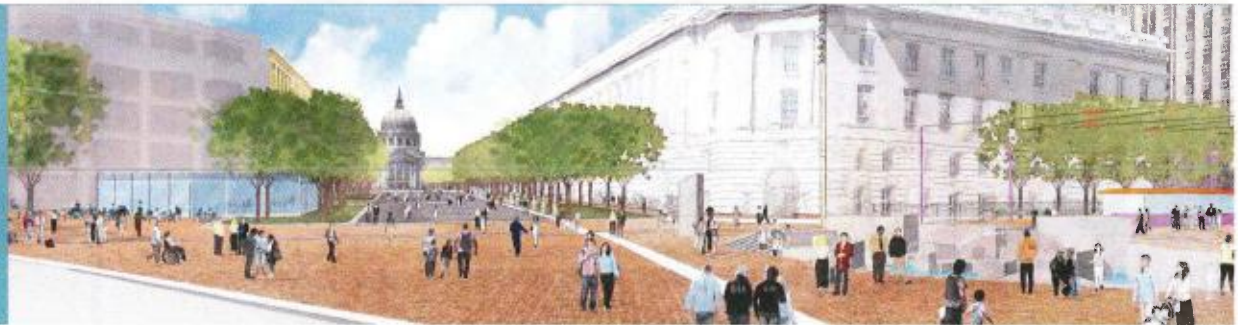
EXISTING



PUBLIC PLATFORM



CIVIC SANCTUARY



CULTURE CONNECTOR



# Fulton Mall View Comparisons

EXISTING



PUBLIC PLATFORM



CIVIC SANCTUARY



CULTURE CONNECTOR



# Civic Center Plaza View Comparisons

EXISTING



PUBLIC PLATFORM



CIVIC SANCTUARY

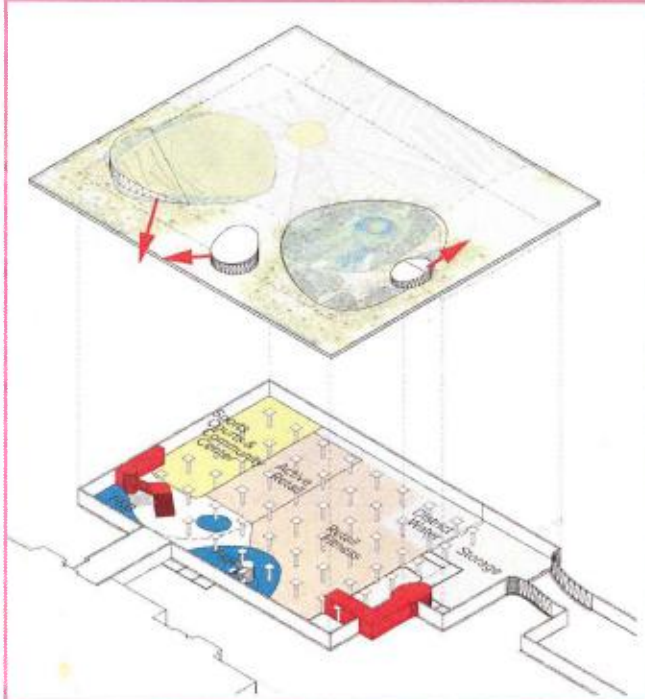


CULTURE CONNECTOR



## Brooks Hall Reuse

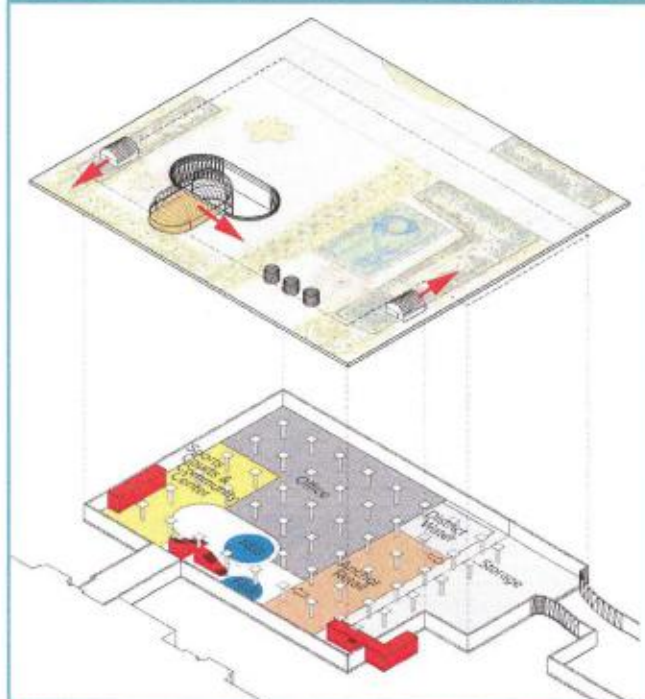
### Public Platform



#### Recreation + Fitness Emphasis

- Sports Courts
- Fitness Center

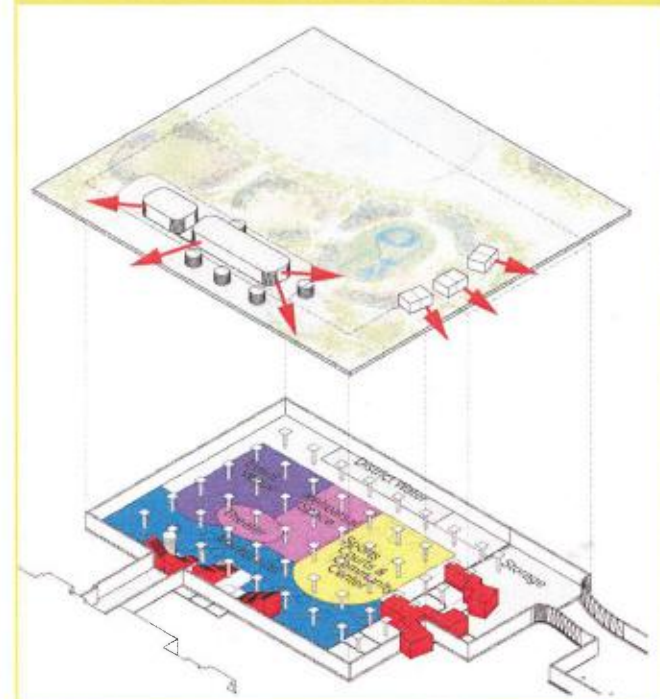
### Civic Sanctuary



#### Neighborhood-Serving Emphasis

- Neighborhood-Serving Retail
- City Services/Offices

### Culture Connector



#### Events + Entertainment Emphasis

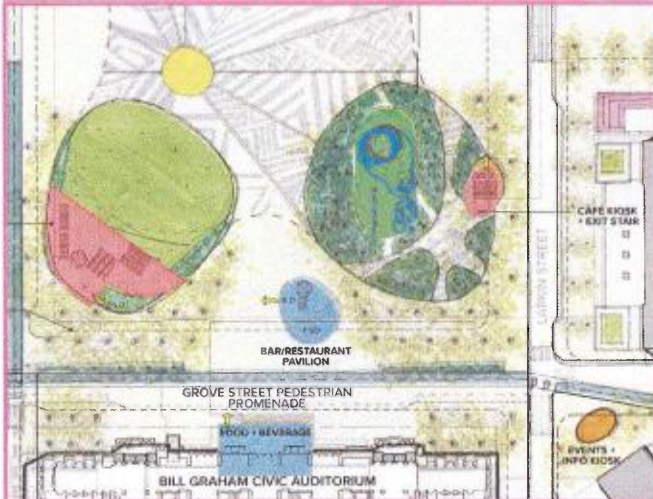
- Event Venue + Rehearsal Space
- Market Hall

### Shared Features

- Community Center
- District Water Storage
- Main Library Storage
- Food & Beverage/Retail

# Bill Graham Civic Auditorium

## Public Platform



### Recreation + Fitness Emphasis

- Food + Beverage - Grove/Larkin
- Community/Civic Uses

## Civic Sanctuary



### Neighborhood-Serving Emphasis

- Food + Beverage - Grove/Larkin
- Movable Kiosks on Grove St

## Culture Connector



### Events + Entertainment Emphasis

- Retail, Kiosks on Grove St
- Food + Beverage - Larkin at Grove and Hayes

## Shared Features

- Grove Street Activity / New Uses
- Increased Activation that Enhances Resource
- Canopy Restoration
- Food & Beverage or Retail

# Next Steps

## Public Platform



## Civic Sanctuary



## Culture Connector



## CIVIC CENTER PUBLIC REALM PLAN



About the Plan ▾ Design Options Related Efforts Get Involved! ▾ Civic Center Stories

Civic Sanctuary

Culture  
Connector

Public Platform

Street Design

### CIVIC SANCTUARY

*All images on this page prepared by CMG Landscape Architecture with Kennerly Architecture + Planning and Gehl Studio.*

A vision for a 21st-century Commons that celebrates **History**: strict rows of trees that frame the public spaces and a defined central spine from Market Street to City Hall recall the formality of the historic Beaux-Arts plan, while contemporary uses and amenities celebrate civic life, work and SF history.



1 Garden Room

2 Flexible Plaza

5 Food and Retail Kiosks

6 Temporary Art

## UPDATED WEBSITE

[WWW.CIVICCENTERSF.ORG](http://WWW.CIVICCENTERSF.ORG)

## + ONLINE SURVEYS:



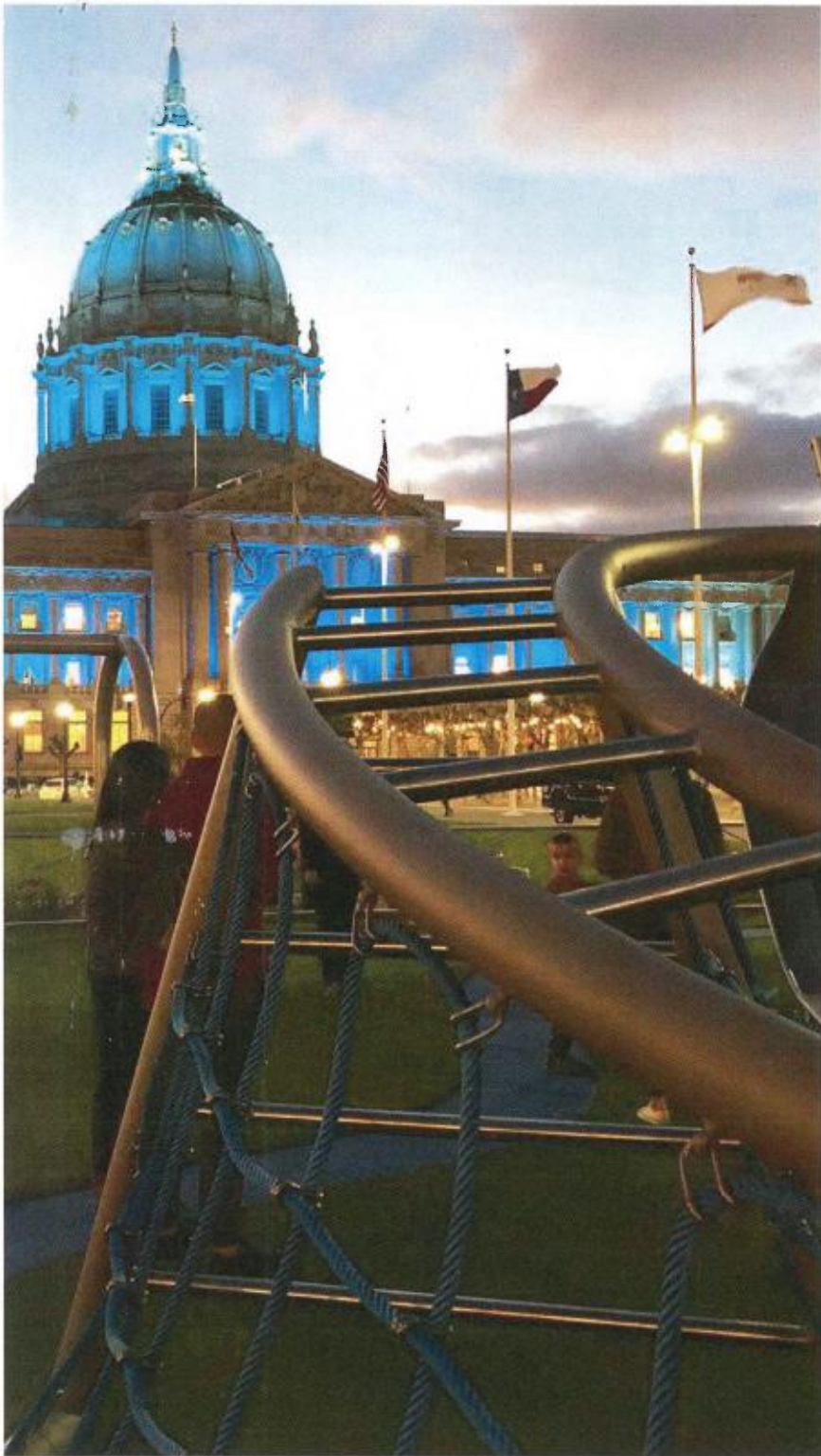
**PUBLIC  
SPACE  
DESIGN**



**BROOKS  
HALL  
REUSE**



**STREET  
DESIGN**



## COMING THIS FALL

- Preferred Conceptual Design Plans
- Conceptual Retrofit Plan for Brooks Hall
- Streetscape Materials Palette
- Cost Estimates for Preferred Designs
- Operations + Management Plan
- Initial Phasing & Funding Strategy

## QUESTIONS & DISCUSSION



Website: [www.civiccentersf.org](http://www.civiccentersf.org)

### Contact Information:

**Nicholas Perry**, *Plan Manager*

[nicholas.perry@sfgov.org](mailto:nicholas.perry@sfgov.org) | (415) 575-9066

**Patrick Race**, *Assistant Plan Manager*

[patrick.race@sfgov.org](mailto:patrick.race@sfgov.org) | (415) 575-9132

**THANK YOU!**