



**PORTSMOUTH SQUARE IMPROVEMENT PROJECT | HPC HEARING | JUNE 2021**



**PORTSMOUTH SQUARE IMPROVEMENT PROJECT | HPC HEARING | JUNE 2021**



**PORTSMOUTH SQUARE IMPROVEMENT PROJECT | HPC HEARING | JUNE 2021**

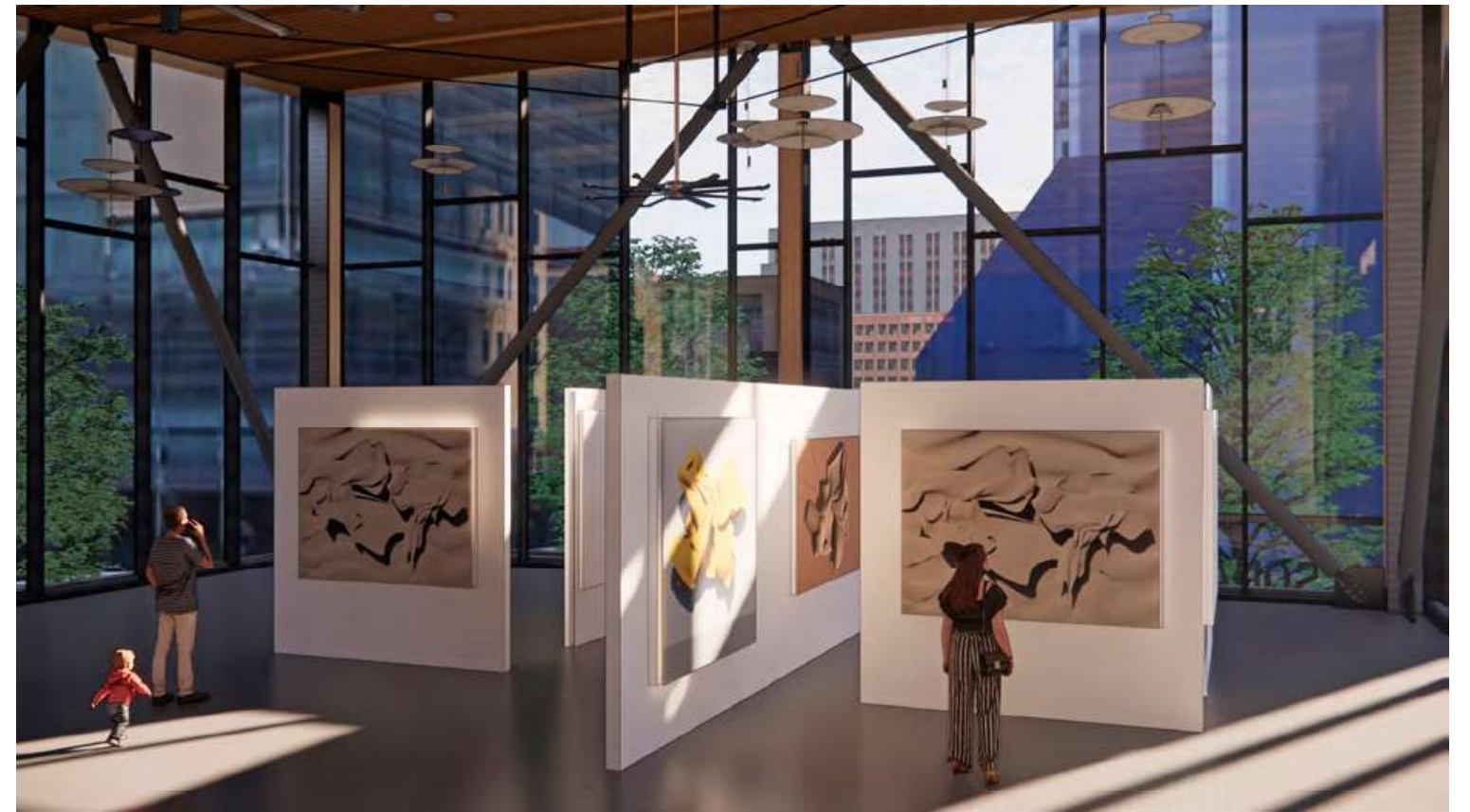
Upper Plaza:  
Shade Terrace, Event Plaza & Stage



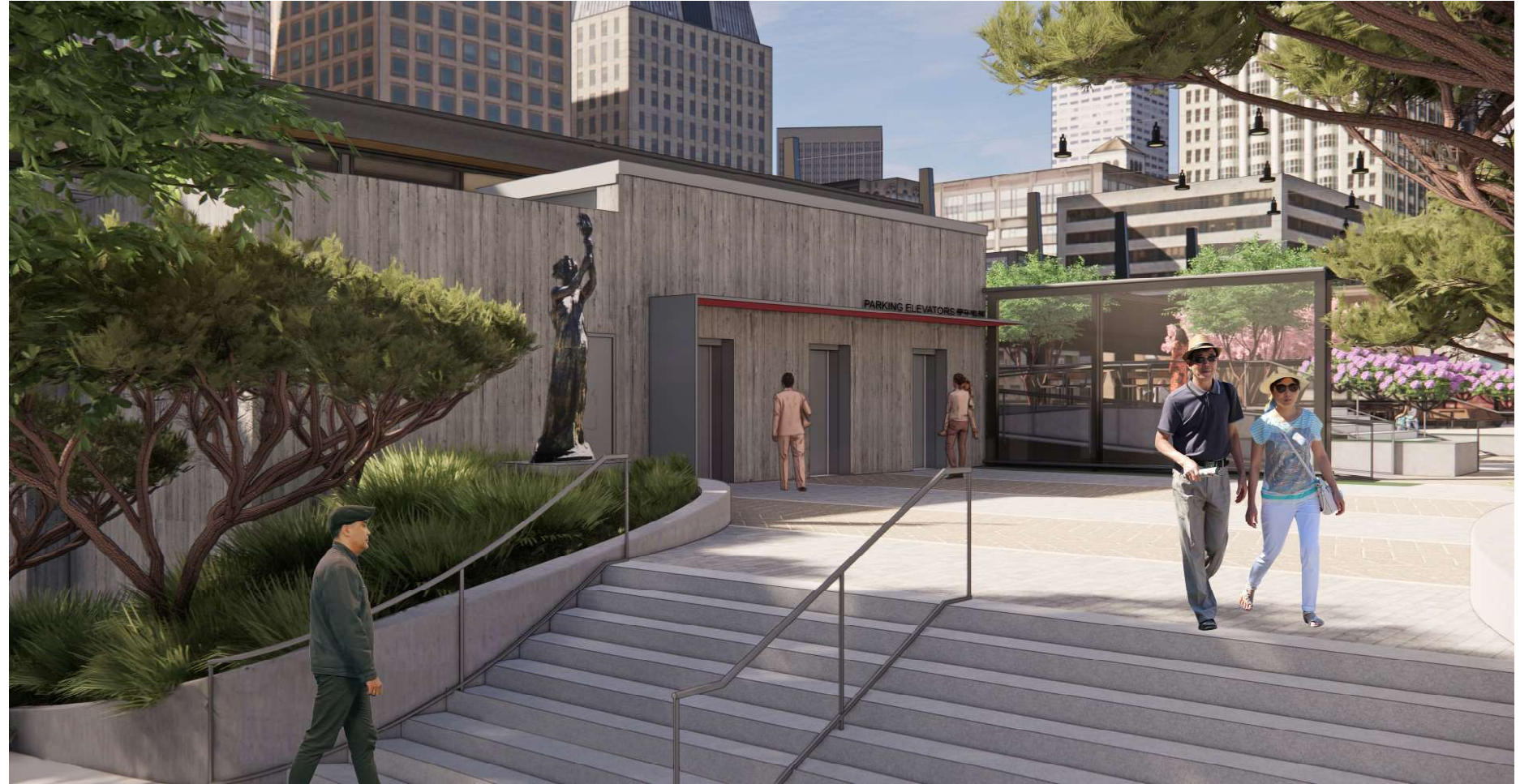
Lower Plaza: Playground & Fitness



Clubhouse

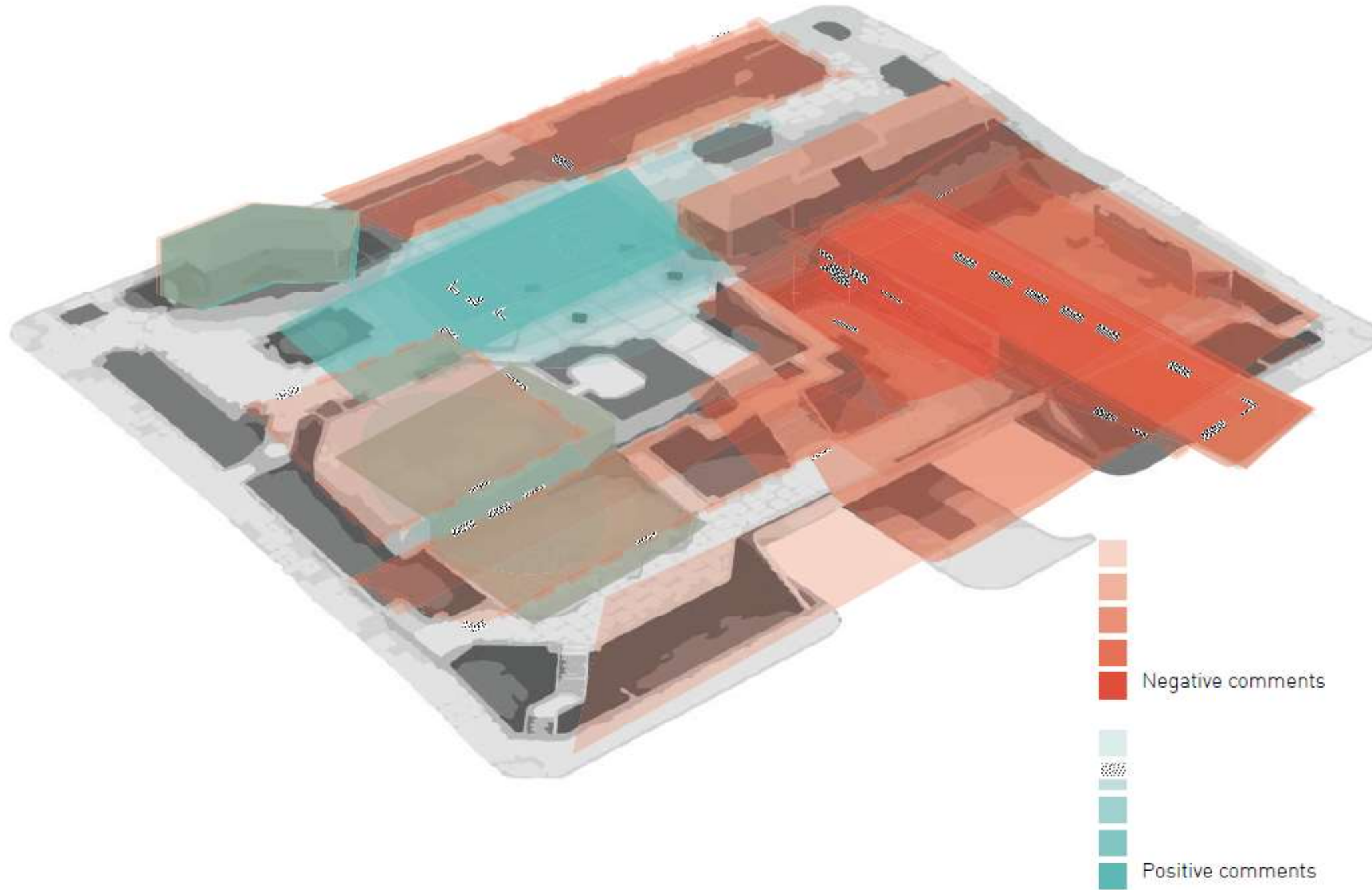


Entry Court:  
Elevator Access & Park Entry

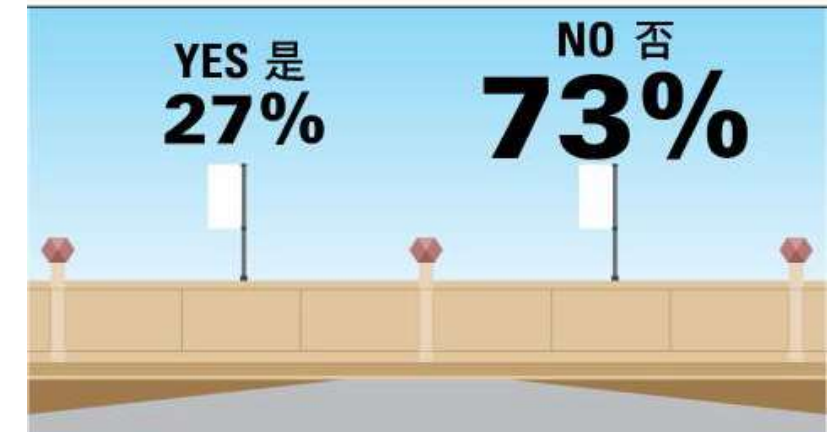




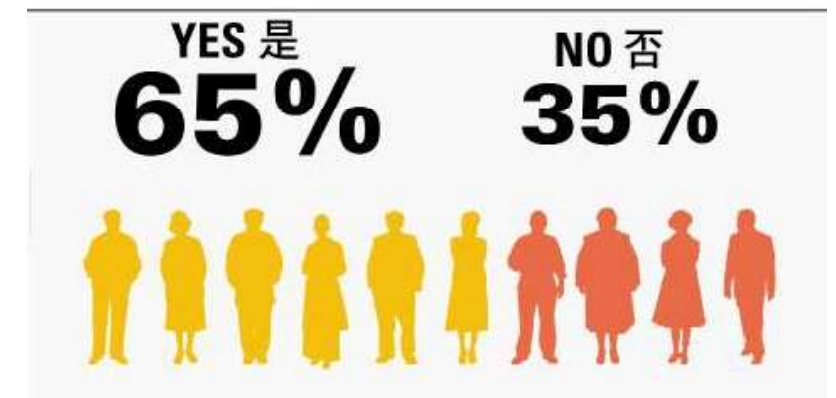
Community Engagement:  
Listening Feedback



Do you ever use the bridge?  
您是否有用過那座行人陸橋?



If additional space and programming were available at the clubhouse, would you use it?  
如果俱樂部提供更多空間和活動，您會去用嗎?



Interview Question (Super Quotes):  
In your words, what is the significance of Portsmouth Square?

Portsmouth Square is the community's living-room.

Portsmouth Square is ... "the heart and soul of Chinatown, or should be."

Portsmouth Square is ... "a testament to the tenacity of the Chinese American people, there at the beginning of San Francisco and still here..."

Portsmouth Square is the historical heart of Chinatown and San Francisco.

Portsmouth Square is ... "the Portal to Chinatown."

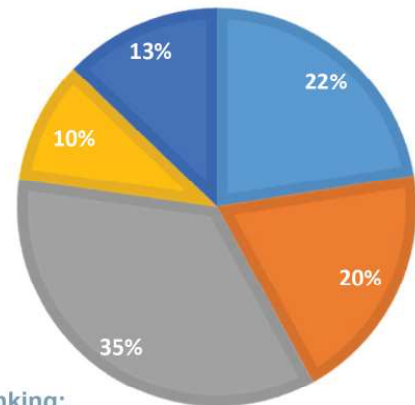
Portsmouth Square is a place to get together, to socialize and catch up.

# COMMUNITY OUTREACH PHASE 2. PARTICIPATORY DESIGN

**Q1. Which park area is most important to you?**  
公園的那個區域對你來說最重要?

**PARK PROGRAM TOTAL VOTES**  
公園功能區域投票分布

■ Playground 遊樂場 ■ Fitness 健身區域 ■ Clubhouse 社區會所空間 ■ Stage Area 活動舞台 ■ Restroom 增設洗手間

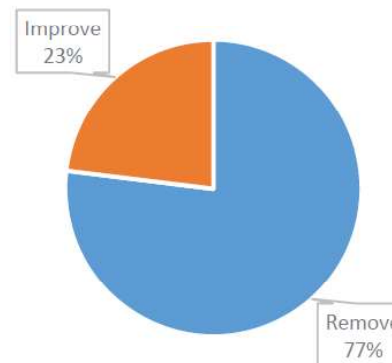


**Priority Ranking:**

- 1st = Clubhouse 社區會所空間
- 2nd = Playground/Fitness 遊樂場/健身區域
- 3rd = Restroom 增設洗手間
- 4th = Stage 活動舞台

**Q2. BRIDGE: Please select which statement best reflects your opinion below:**

- a. The Kearny Bridge should be removed.
- b. The Kearny Bridge should be kept and integrated with the new plaza.



**Recommendation:**  
Remove Bridge



# PROJECT OBJECTIVES

## **1. Provide a Renovated Park that is Sensitive to the Cultural and Historic Setting of the Property**

- Provide a renovated park that is architecturally compatible with the Chinatown neighborhood while maintaining the existing park character.
- Incorporate the existing monuments and art elements into a renovated park.

## **2. Align Park Renovation with Community Input**

- Be responsive to the recreational needs of the Chinatown neighborhood and provide for diverse groups of people of various ages and abilities.
- Maximize the implementation of community input received during the engagement phase.

## **3. Maximize Park Cohesiveness and Usability**

- Improve spatial relationships, access, and circulation, both within the park and at the park-street frontage interface.
- Maximize usable space and remove barriers or elements that divide usable space.
- Create inviting and flexible spaces that can accommodate daily recreational activities and events of all sizes.
- Establish a clubhouse that can flex to accommodate gatherings of multiple sizes.
- Create a large multi-use upper plaza that can accommodate large events but is also comfortable for all event sizes.
- Site new buildings in a manner that maximizes natural light, works with the existing garage structure and respects the topography of the site and the surrounding area.
- Maximize direct connections between the clubhouse and the park that offer opportunities for indoor-outdoor uses.
- Create a unified “active recreation” area with fitness equipment and a children’s playground with direct access to the clubhouse.

# PROJECT OBJECTIVES

## **4. Create a Safe and Secure Park and Streetscape**

- Create a single cohesive park that is both physically and visually connected and uses site elements and structures to connect instead of divide spaces.
- Provide direct lines of sight to and from the clubhouse to maximize safety and visibility throughout the property.
- Provide a safe pedestrian experience both within the park and on the sidewalks.

## **5. Maintain and Preserve the Existing Garage and its Operations**

- Minimize impacts to the garage structure and its operations both during construction and at completion.
- Upgrade the waterproofing of the garage and all roof drainage components to eliminate water intrusion into the garage and its structure.
- Protect the existing restroom and garage infrastructure on the park level and seamlessly incorporate them into the renovated park.

## **6. Create a Sustainable and Easy-To-Maintain Park**

- Provide a “Zero Carbon” clubhouse by eliminating all carbon emissions and using 100% renewable energy.
- Utilize durable and long-lasting materials and building systems to withstand intense use and not create long-term maintenance burdens.
- Minimize the need for long-term pest management.
- Design and implement a project that meets the established budget.