

PACIFIC ROD & GUN CLUB

520 JOHN MUIR DRIVE LAKE MERCED WEST DRAFT PRESERVATION ALTERNATIVES



Justin Greving

Senior Preservation Planner / July 7, 2021 / Historic Preservation Commission



San Francisco
Planning

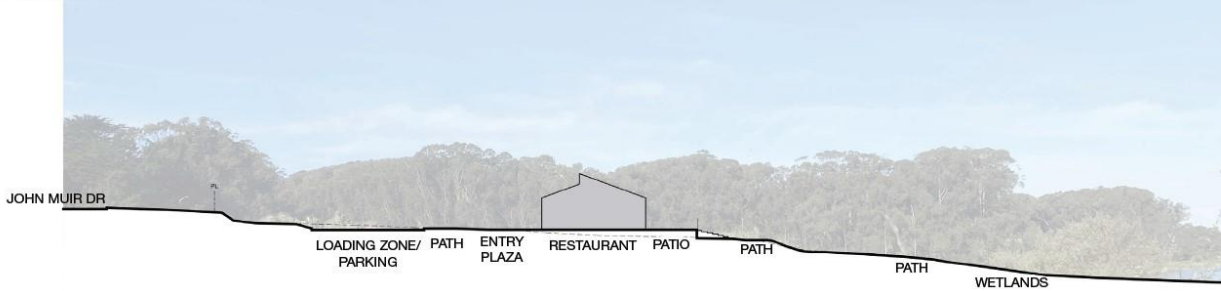
Lake Merced West **PROJECT OBJECTIVES**

1. To create a recreational facility that enhances the unique waterfront setting to encourage public use and enjoyment of open space for visitors of all ages, fitness levels and experience.
2. To develop the site to maximize scenic lake views and facilitate access while retaining open spaces.
3. To provide flexible use of a large site in the southwest quadrant of San Francisco with a range of recreational activities to serve diverse users throughout the region and accommodate groups of various sizes.
4. To construct and operate an economically feasible recreation facility that sustains its long-term operations and maintenance.
5. To provide an office and storage yard for the SFPUC arborist team.
6. To provide an accessible and welcoming environment for all parkgoers regardless of what amenity they plan to experience.
7. To construct Code-compliant buildings and infrastructure designed for the spatial and programmatic needs of contemporary recreational uses.
8. To complete remediation of upland site areas.
9. To enhance public awareness of water quality, water supply, ecological and watershed protection issues by providing compatible public recreational opportunities in the Lake Merced watershed.

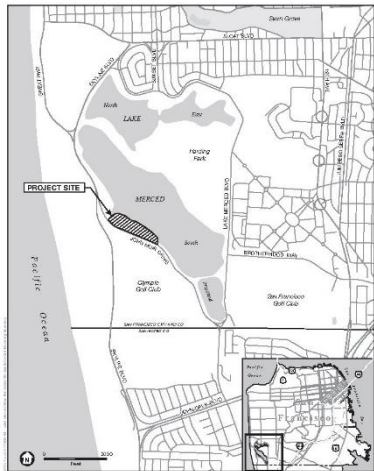
Lake Merced West CONCEPT DEVELOPMENT



N. CONTEXT-SENSITIVE SITING, MASSING AND MATERIALITY | SEA RANCH, CA



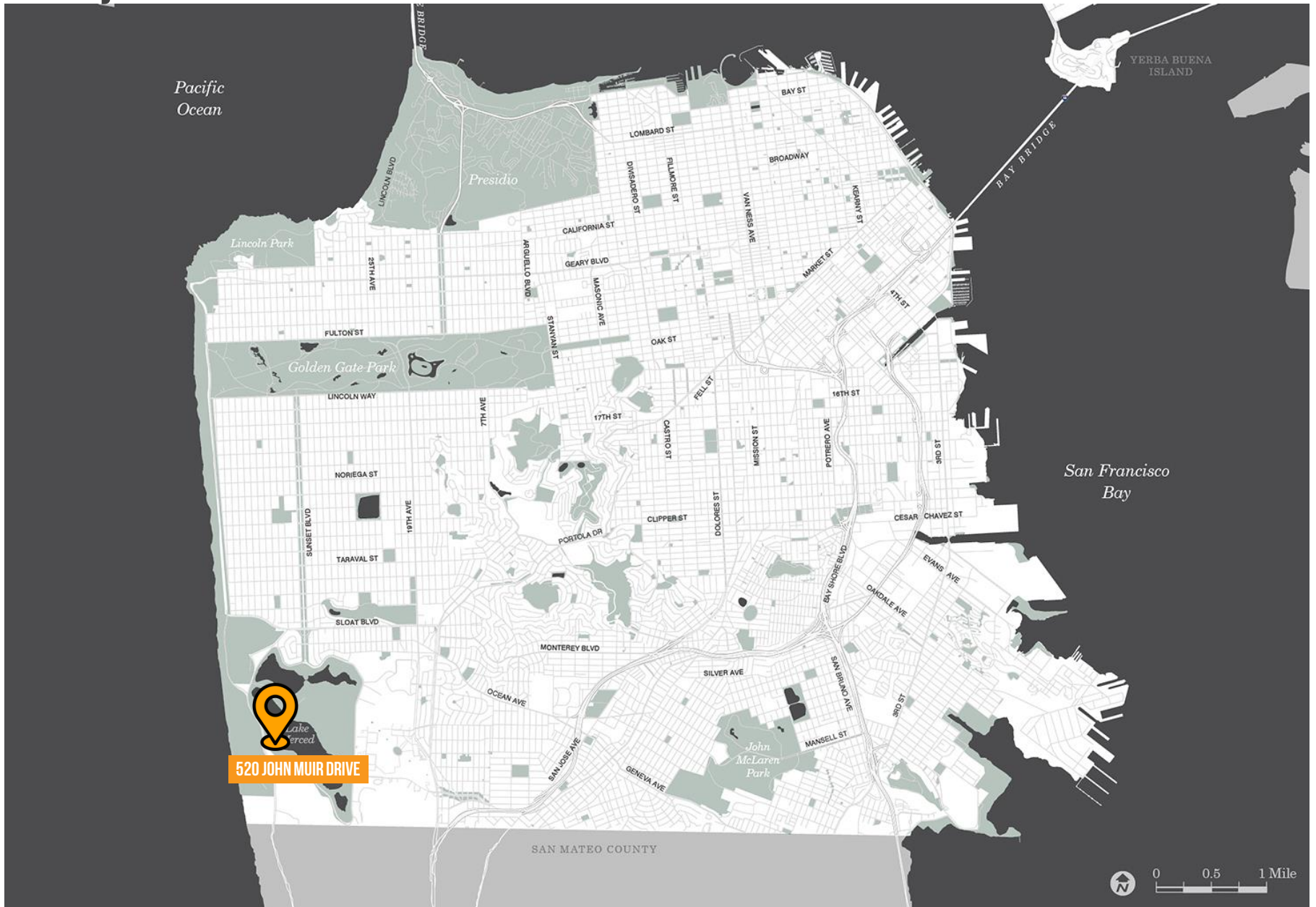
Proposed Site Plan



PROJECT SITE



Project Site: 520 JOHN MUIR DRIVE



Project Site: 520 JOHN MUIR DRIVE



Project Site: 520 JOHN MUIR DRIVE



Project Site: 520 JOHN MUIR DRIVE



Project Site: 520 JOHN MUIR DRIVE



Project Site: 520 JOHN MUIR DRIVE



Skeet Field 7 High House



Skeet Field 7 Low House



Safety fence between skeet fields

Project Site: 520 JOHN MUIR DRIVE



Shell House



520 John Muir Drive Preservation Alternatives

Project Site: 520 JOHN MUIR DRIVE



Rifle Range building



520 John Muir Drive Preservation Alternatives

Project Site: 520 JOHN MUIR DRIVE



Caretaker's House



520 John Muir Drive Preservation Alternatives

Project Site: 520 JOHN MUIR DRIVE



Clubhouse



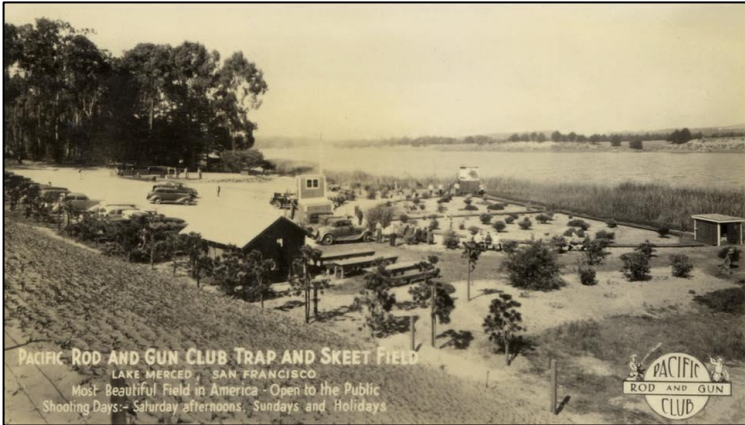
520 John Muir Drive Preservation Alternatives

520 John Muir Drive: HISTORY

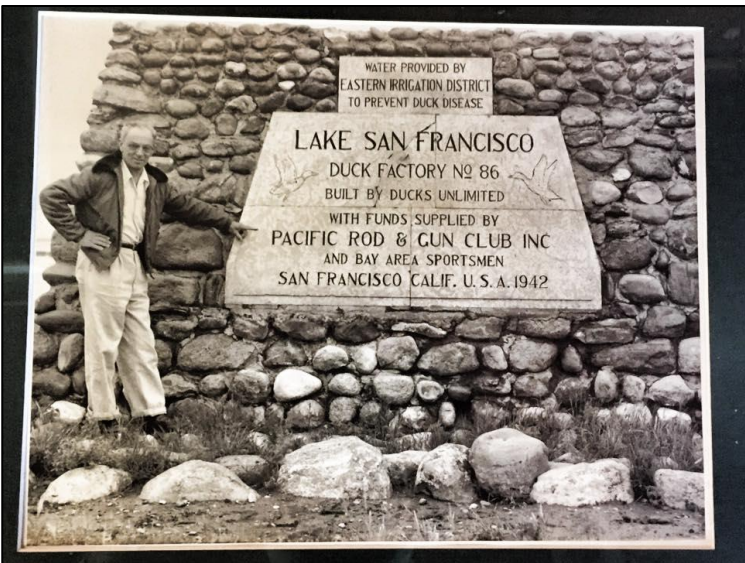


- Pacific Rod and Gun Club (PRGG) founded in 1928, moved to subject property in 1934
- Started out with 2 skeet fields but slowly added additional skeet fields and other structures over time
- Held regional and state skeet championships in 1930s and the 5th National Skeet Championships in 1939
- Activities were curtailed during World War II but expanded significantly after the war
- Membership dropped in 1993 after the use of lead bullets was banned and PRGG's lease on the site ended in 2015

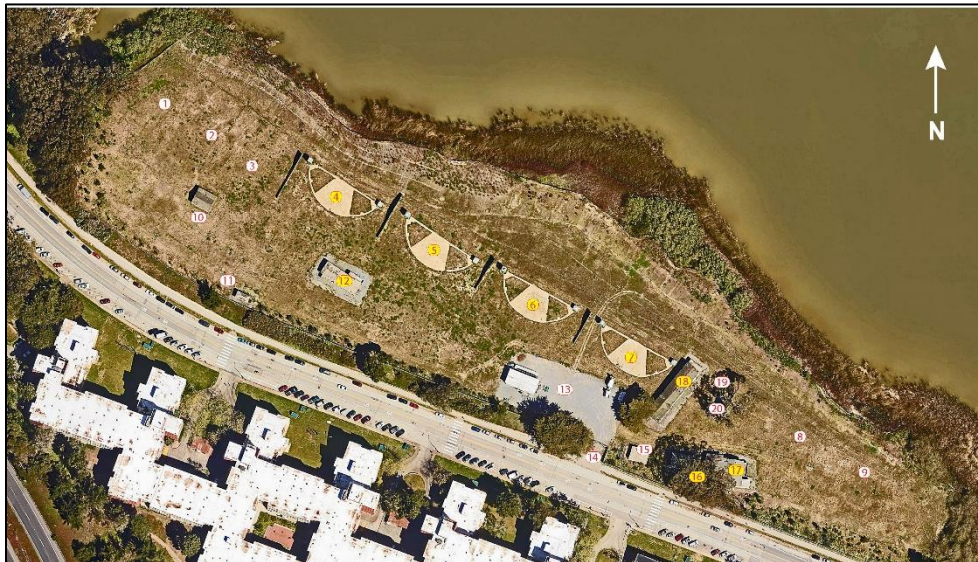
520 John Muir Drive: SIGNIFICANCE



- Eligible under Criterion 1 for its association with the increased popularity of sport hunting and the interrelated development of skeet shooting that occurred within the context of early 20th century wildlife conservation
- PRGG is an example of the type of sports gun club that formed in the context of the democratization of hunting as a social experience connected with the conservation movement
- Period of significance 1934-1941 to reflect initial period of the club's expansion

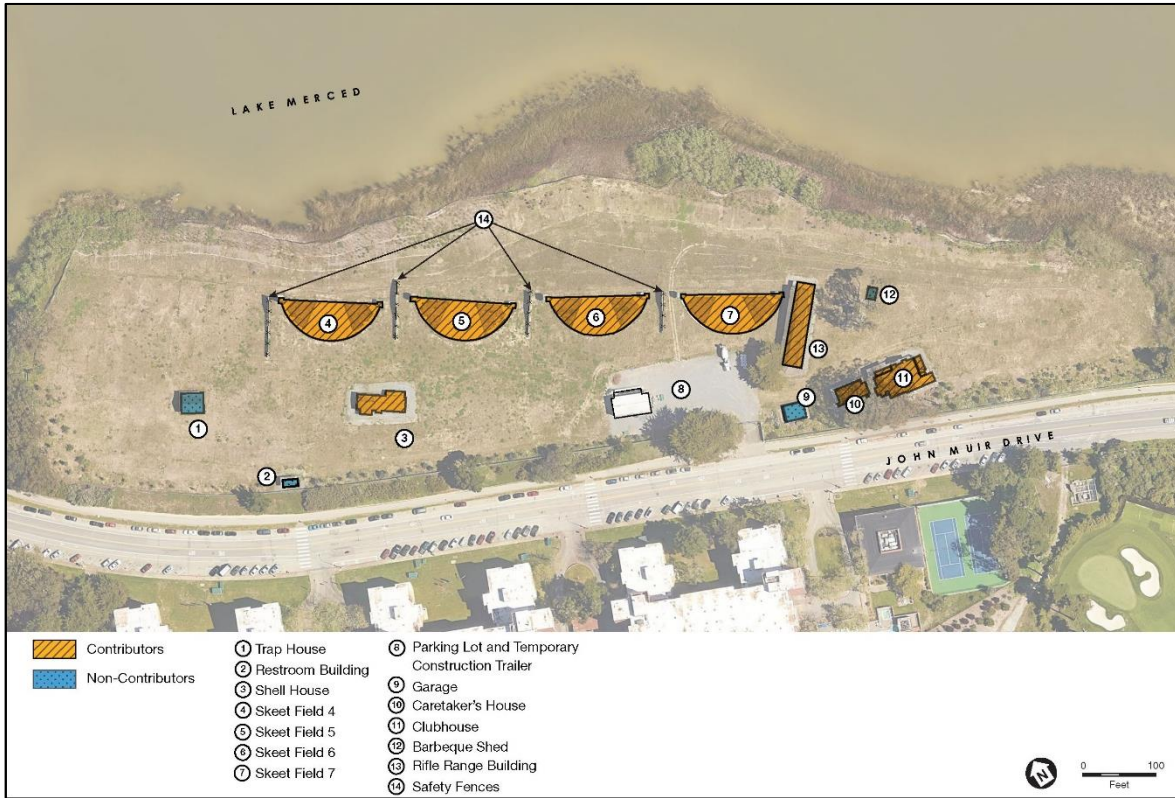


520 John Muir Drive: INTEGRITY



- After the site closed in 2015 remedial action to remove toxic materials took place between May 2015 to April 2016
- Buildings on site remained in place and other smaller features were temporarily stored and reinstalled
- Site retains sufficient integrity to communicate significance

520 John Muir Drive: CHARACTER-DEFINING FEATURES

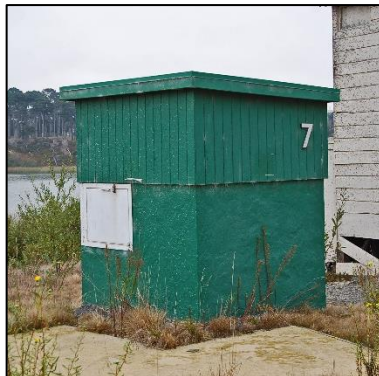


- Linear arrangement of skeet fields 4-7 facing the lake, shoreline as a natural boundary, and location of buildings and structures on the periphery of the site

520 John Muir Drive: CHARACTER-DEFINING FEATURES



- Character defining features of skeet fields 4-7 (1938) includes the following:
 - a level terrace
 - semi-circular path system of each field with a high and low house at the opposite ends of each field
 - High House
 - Low House
 - Safety fences located between the skeet fields



520 John Muir Drive: CHARACTER-DEFINING FEATURES

- Buildings that housed operational and social functions of the club including:
 - The Clubhouse
 - Caretaker's House
 - Rifle Range Building
 - Shell House



Clubhouse



Caretaker's House



Rifle Range Building



Shell House

PROPOSED PROJECT



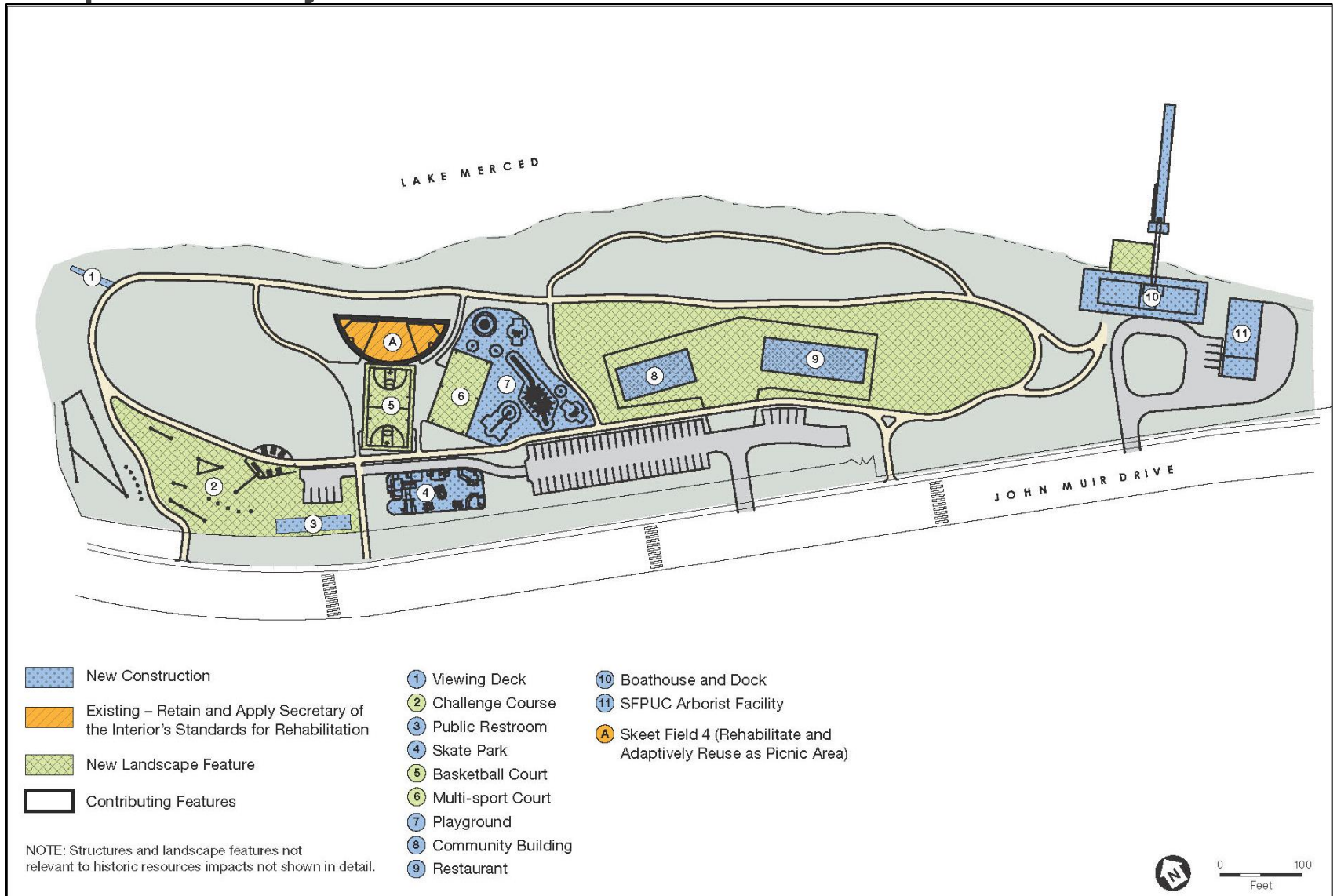
Proposed Project: **PROJECT OBJECTIVES**

1. Create a recreational facility that enhances the unique waterfront setting to encourage public use and enjoyment of open space for visitors of all ages, fitness levels, and experience
2. Develop the site to maximize scenic lake views and facilitate access while retaining open spaces
3. Provide flexible use of a large site in the southwest quadrant of San Francisco with a range of recreational activities to serve diverse users throughout the region and accommodate groups of various sizes
4. Construct and operate an economically feasible recreation facility that sustains its long-term operations and maintenance
5. Provide an office and storage yard for the SFPUC arborist team
6. Provide an accessible and welcoming environment for all parkgoers regardless of what amenity they plan to experience
7. Construct code-compliant buildings and infrastructure designed for the spatial and programmatic needs of contemporary recreational uses
8. Complete remediation of upland site areas
9. Enhance public awareness of water quality, water supply, ecological, and watershed protection issues by providing compatible public recreational opportunities in the Lake Merced watershed

Proposed Project: PROPOSED SITE PLAN



Proposed Project: PROPOSED SITE PLAN



DRAFT

PRESERVATION ALTERNATIVES

1. NO PROJECT ALTERNATIVE

2. FULL PRESERVATION ALTERNATIVE

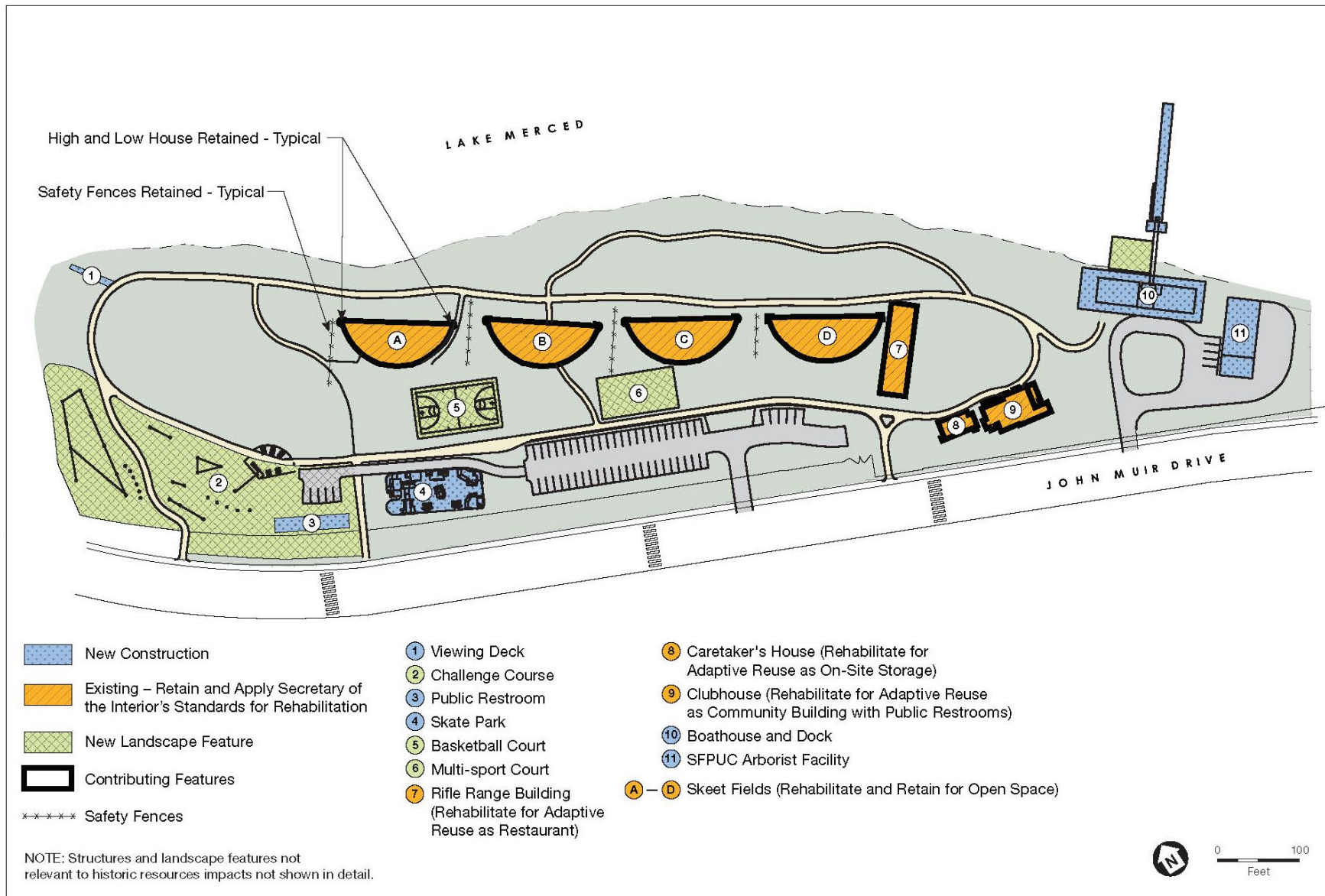
3. PARTIAL PRESERVATION ALTERNATIVE



Draft Preservation Alternatives: **COMPARISON TABLE**

	PROPOSED PROJECT	NO PROJECT ALTERNATIVE	FULL PRESERVATION ALTERNATIVE	PARTIAL PRESERVATION ALTERNATIVE
Skeet Fields 4-7	1 partially retained	4 retained	4 retained	2 retained
4 contributing buildings	0 retained	4 retained	3 retained	2 retained
New Structures	6 new structures	0 new structures	4 new structures	5 new structures

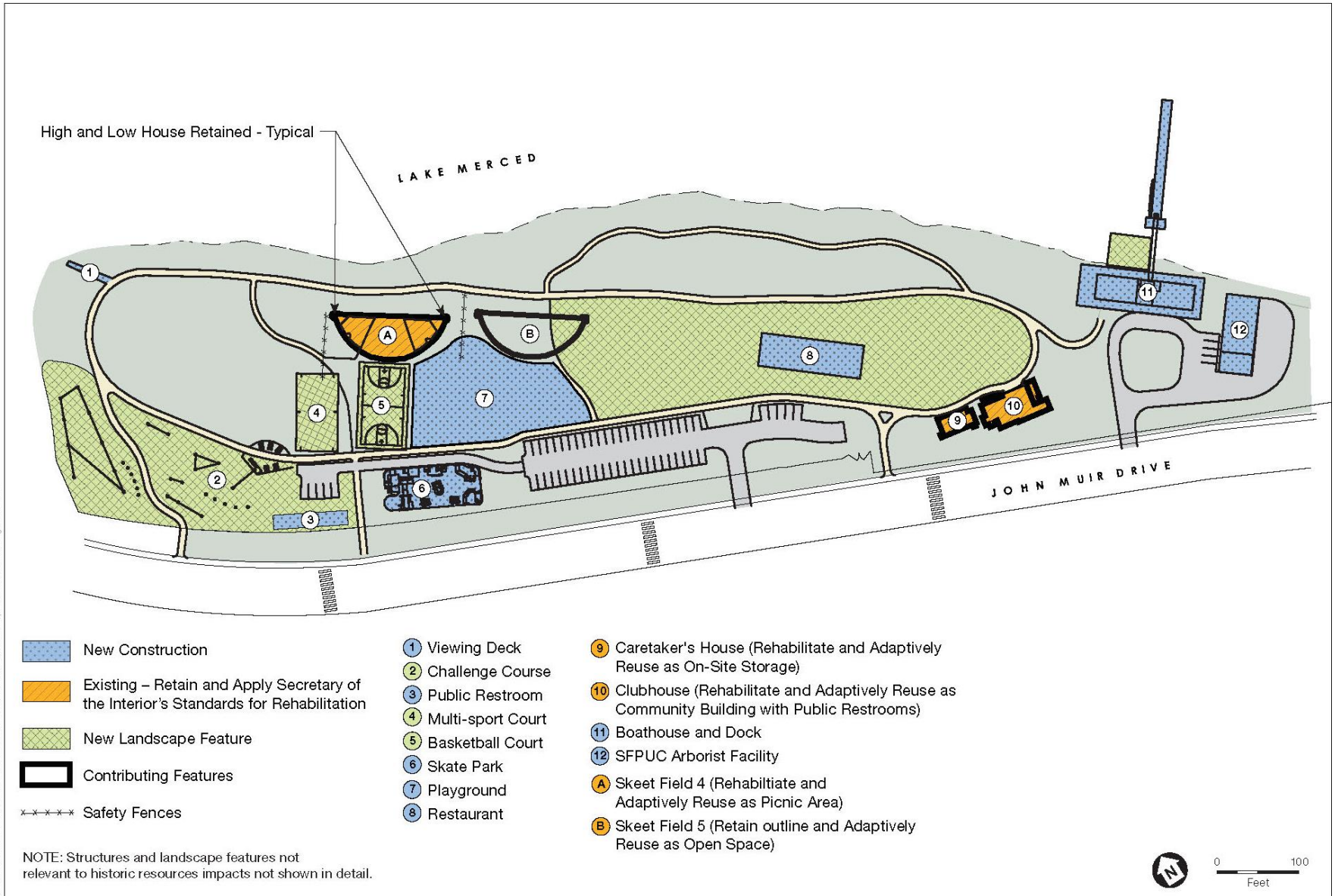
Draft Preservation Alternatives: FULL PRESERVATION ALTERNATIVE



Draft Preservation Alternatives: **FULL PRESERVATION ALTERNATIVE**

- Ability to meet project objectives:
 - The full preservation alternative would meet or partially meet most of the project objectives, but the reuse and rehabilitation of the existing buildings would limit the number of new uses allowed on the site
 - Restaurant would not be sited to maximize views of the lake
 - Retention of 4 skeet fields would limit new construction
- Impacts to the historic resource would be less than significant
 - Overall layout of historic resource would be retained
 - 3 of the 4 identified contributing buildings would be retained
 - 4 of the 4 identified skeet fields would be retained

Draft Preservation Alternatives: PARTIAL PRESERVATION ALT.



SFO\17\cccc\170626.00 - Lake Merced West Recreation\06_Graphics-GIS-Modeling\Illustrator

Draft Preservation Alternatives: **PARTIAL PRESERVATION ALT.**

- Ability to meet project objectives:
 - The partial preservation alternative would meet or partially meet most of the project objectives, but the reuse and rehabilitation of some existing buildings and retention of some of the site features would still limit the size and number of new uses allowed on the site
- Impacts to the historic resource would be less than the proposed project
 - Overall layout of historic resource would be partially retained
 - 2 of the 4 identified contributing buildings would be retained
 - 2 of the 4 identified skeet fields would be retained

Draft Preservation Alternatives: **ALTERNATIVES PROCESS**



- Project sponsor and planning department explored a range of alternatives that accounted for the fact that the resource is composed of interrelated landscape features and buildings
- Siting of skeet fields at center of site is also prime location for new uses that would take advantage of lake views
- Existing condition and typologies of building on site are not easily adapted to new programmatic requirements for the site

THANK YOU



San Francisco
Planning

Justin Greving
Senior Preservation Planner
San Francisco Planning

Justin.greving@sfgov.org
www.sfplanning.org

PACIFIC ROD AND GUN CLUB TRAP AND SKEET FIELD

LAKE MERCED, SAN FRANCISCO

Most Beautiful Field in America - Open to the Public

Shooting Days:- Saturday afternoons, Sundays and Holidays