



HEALTH CARE SERVICES MASTER PLAN 2019 UPDATE

PLANNING COMMISSION

INFORMATIONAL HEARING

DECEMBER 12, 2019



San Francisco
Department of Public Health

San Francisco
Planning

Agenda

- HCSMP Overview
- Assessments
- Consistency Determination Guidelines
- Supporting Legislation
- Calendar of Upcoming Hearings



HCSMP OVERVIEW

HCSMP Purpose

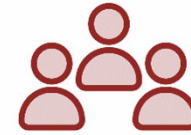
- **Identify current & future health care needs** in SF, with a focus on improving access for vulnerable populations
- Identify an **appropriate & equitable geographic distribution** of facilities
- Provide a framework for **reviewing future medical use** development projects
- Provide other **policy recommendations** related to health care services as needed

Outreach & Engagement



Stakeholder Interviews

with 33 individuals @ 25 organizations



Briefings

with key stakeholders & advocacy organizations



Workshop with health care providers



Online Survey



Public Hearings

with Health Commission, Planning Commission, Board of Supervisors



Public Comment Period on Draft Plan (1/10/20-2/20/20)

2019 HCSMP Components

ASSESSMENTS

**CONSISTENCY
DETERMINATION
GUIDELINES**

**SUPPORTING
LEGISLATION**



ASSESSMENTS

2019 HCSMP Assessments

Community Health Assessment



Trends in morbidity and mortality; social determinants of health

Capacity & Gap Assessment



Utilization and resource availability of health care; geographic, cultural, and linguistic access

Health System Trends



Local, state, and national health care policy and trends impacting service delivery

Land Use Assessment

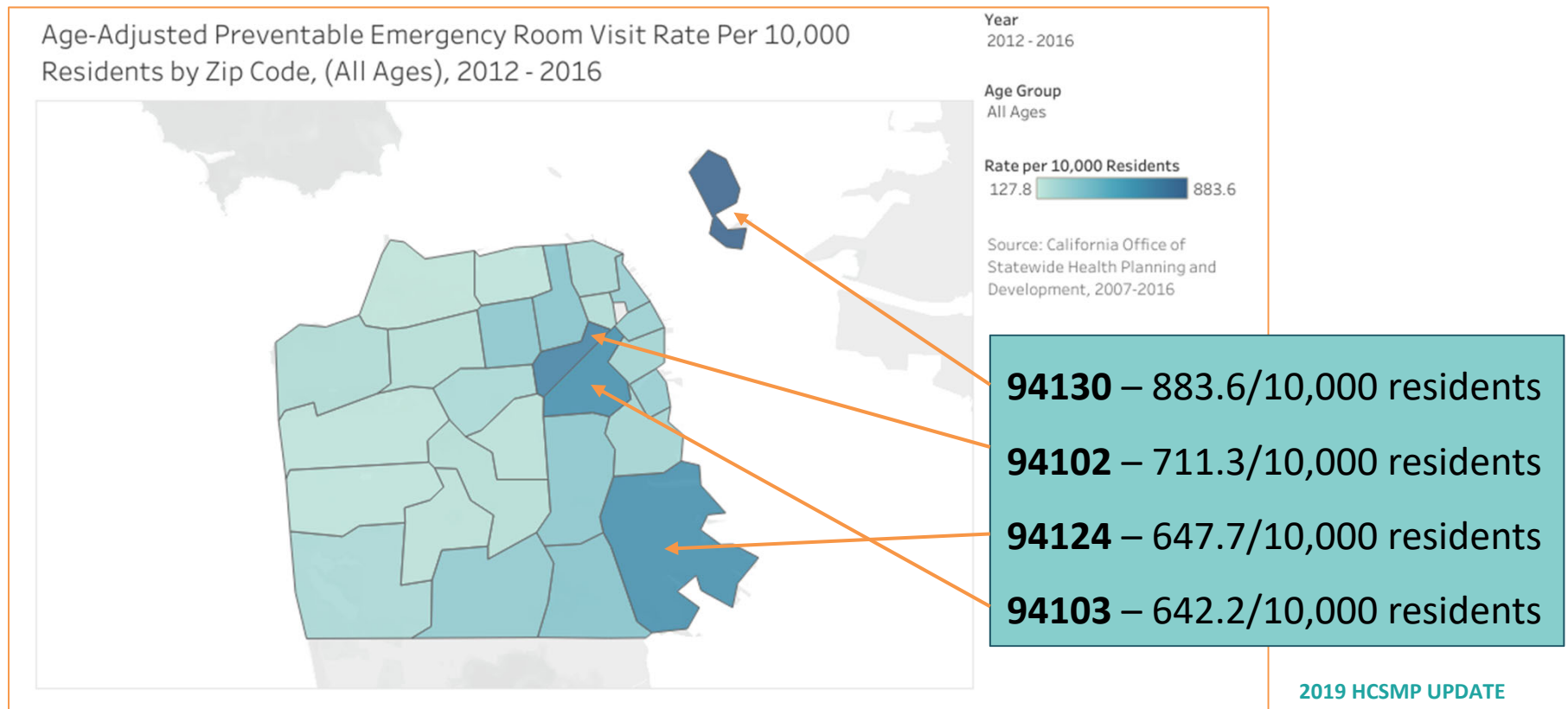


Supply of medical uses; demand and need for new medical uses; potential land use impacts

Community Health Assessment

Vulnerable Populations

- Neighborhood
- Socioeconomic Status
- Age
- Race/Ethnicity
- Language
- LGBTQ
- Homeless

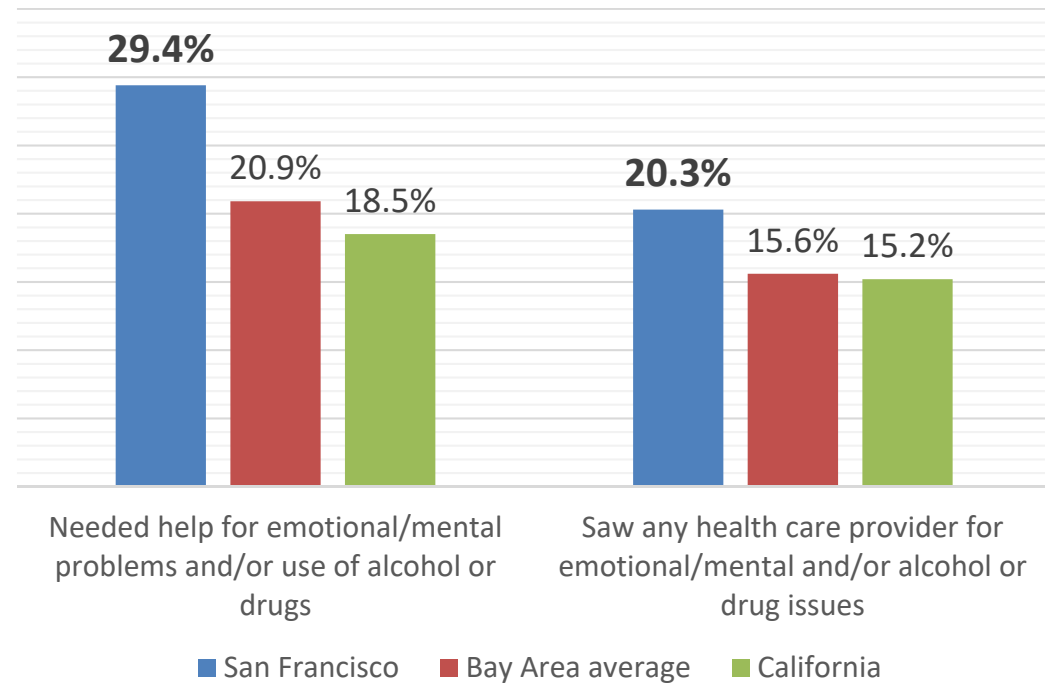


Capacity & Gap Assessment

Behavioral Health

- Community-based services
- Workforce shortage of behavioral health professionals
- Identified Disparities

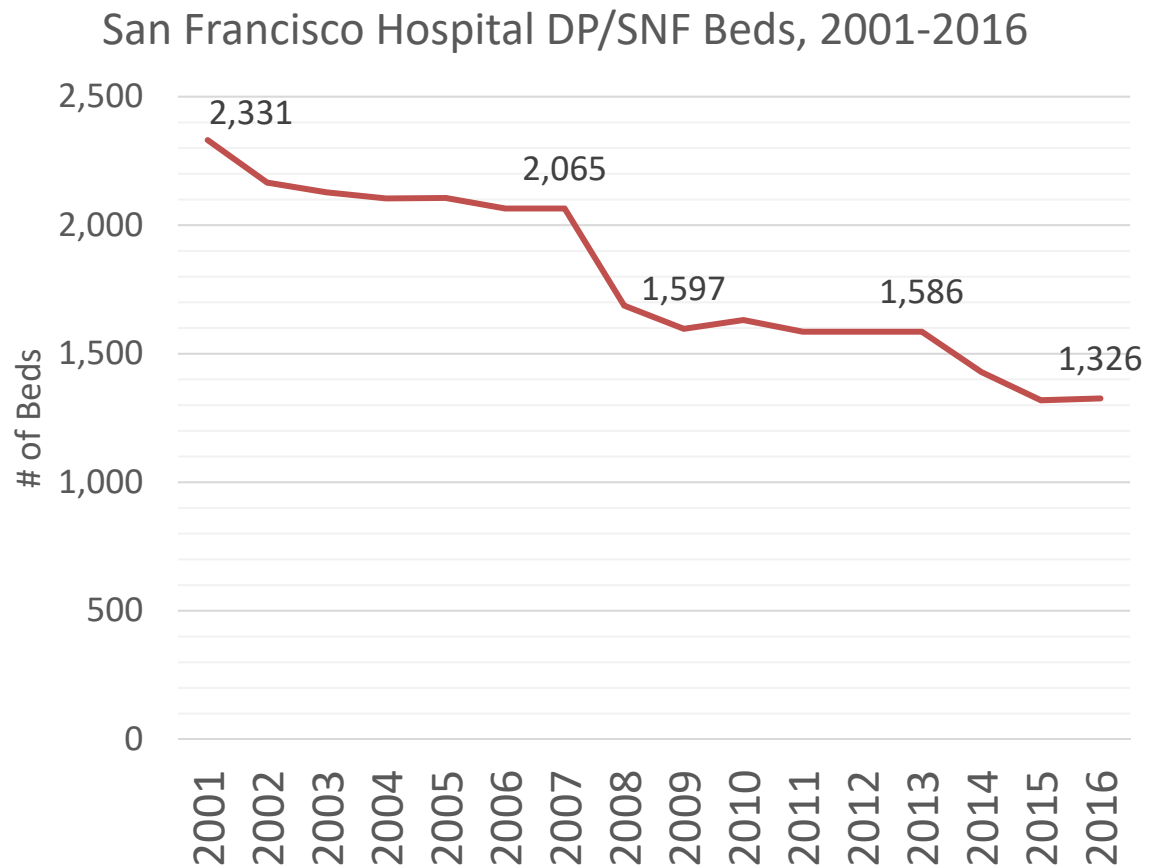
Behavioral Health Questions
California Health Interview Survey, 2017



Capacity & Gap Assessment

Post-Acute & Long-Term Care

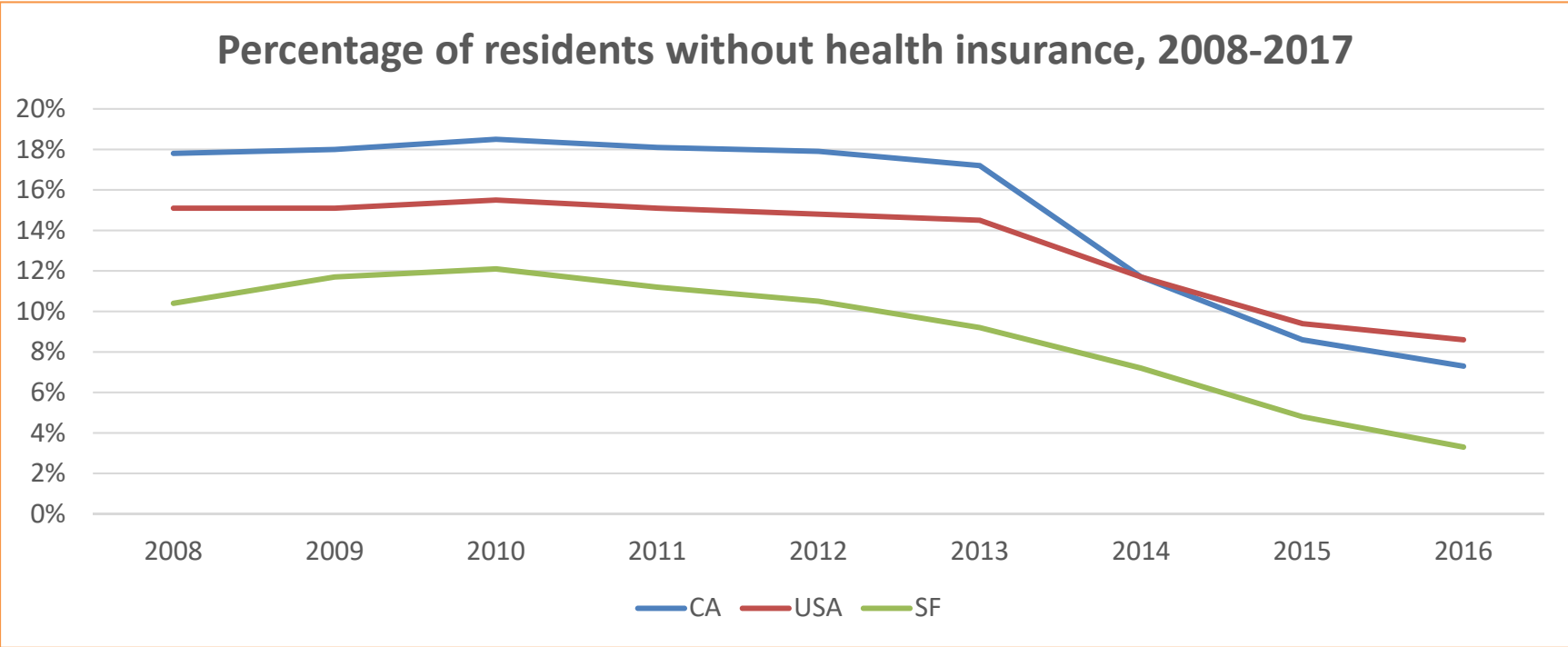
- Skilled Nursing Facilities (SNF)
- Subacute care
- Residential Care Facilities – “board and care” homes



Health System Trends Assessment

Health Care Coverage & Access

- 140,000 San Franciscans enrolled in new health insurance options since 2014 launch of ACA
- Health care delivery shifting to outpatient care



Land Use Assessment

Trends

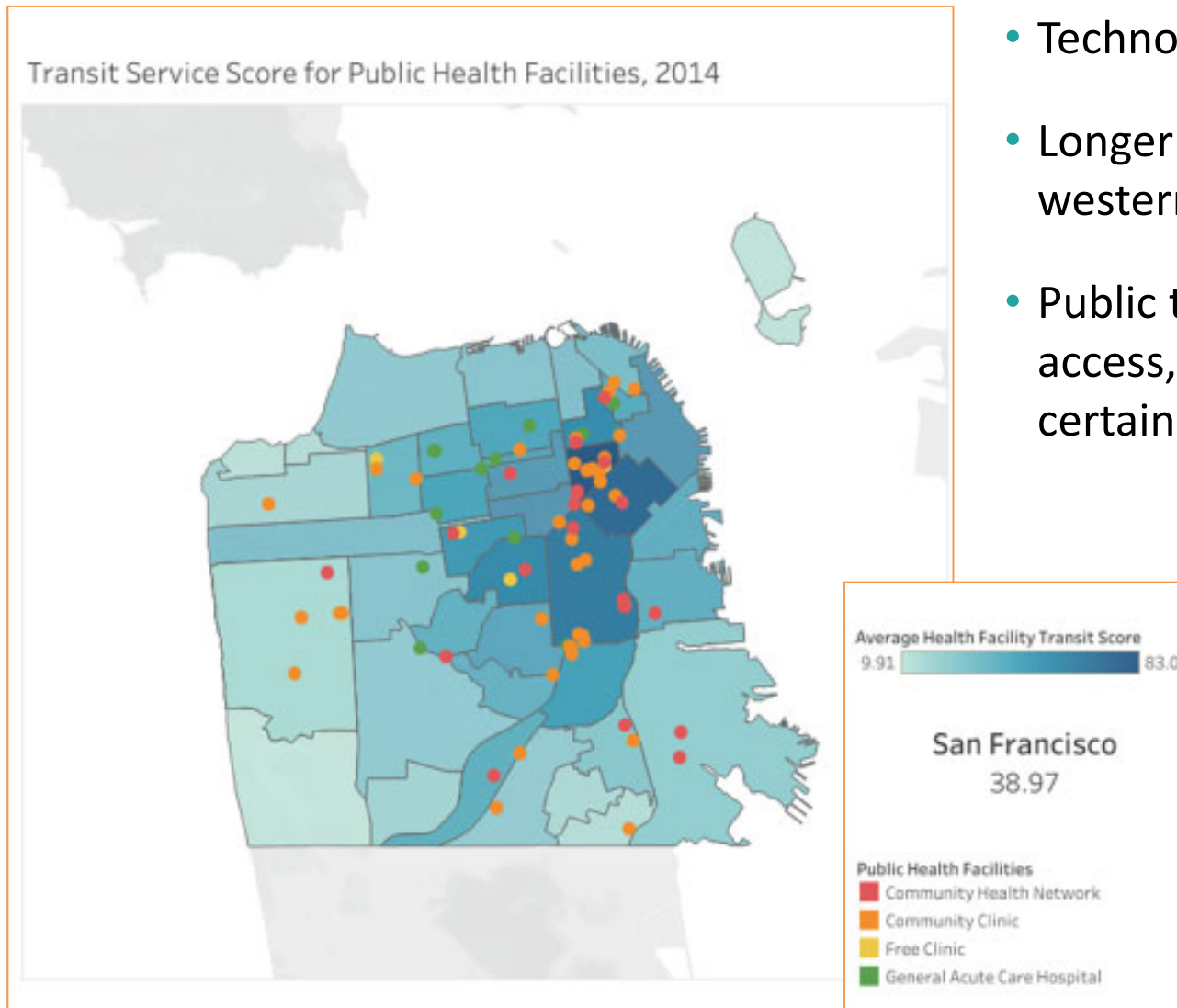
- **2.1 million sq ft.** hospitals added since 2013 (+236 beds)
- **348,907 sq. ft.** major medical outpatient
- 12,360 **new jobs** since 2010
- **775,580 sq. ft** in pipeline



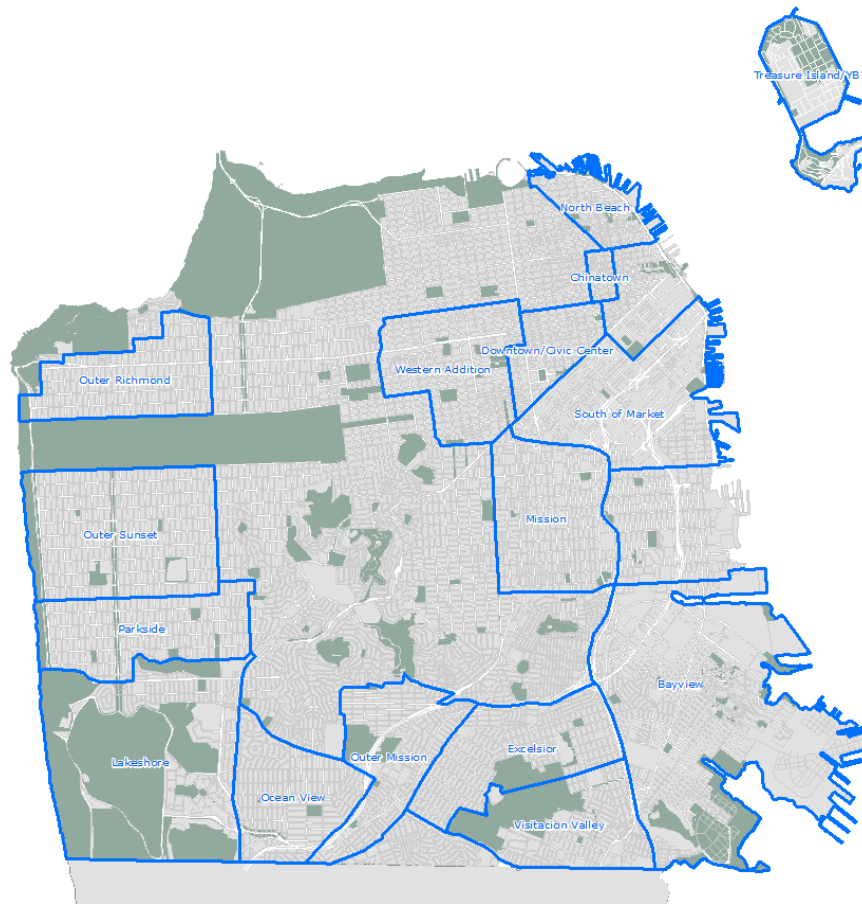
Land Use Assessment

Transportation & Technology

- Technology can improve access
- Longer travel times for southern, western neighborhoods
- Public transportation improves access, but can be a barrier for certain populations



Land Use Assessment



Neighborhoods with At Risk Populations

- Bayview Hunters Point
- Tenderloin & adjacent SoMa
- Mission
- Chinatown
- Western Addition
- Western neighborhoods
- OMI, Excelsior, Visitation Valley
- Treasure Island
- Northern Waterfront

Land Use Assessment

Barriers to Health Care

- Insurance status
- Cost of care
- Immigration status
- Transportation
- Knowledge of Services
- Linguistically/Culturally appropriate care
- Workforce gaps



Land Use Assessment

Projected Growth

- 4.3 – 4.7 million square feet
- Zoned capacity for growth



Land Use Assessment

Growth Caveats

- **Surplus** in existing medical service
- Medical service **delivery** trends
- **High rates** of physician & beds per capita rates
- Regional & national **hub** for care
- Changing **workforce** composition
- Changing **demographics**





CONSISTENCY DETERMINATION GUIDELINES

Consistency Determination Process

- Projects that must apply for a Consistency Determination
 - 5,000+ GSF new or added Medical Use
 - 10,000+ GSF change of use to Medical Use
- Guidelines developed by DPH and Planning Staff with Stakeholder input
- Not a checklist: providers select the Guidelines relevant to their project.
- Priority processing at Planning
- Inconsistent Applications
 - Health and Planning Commission Hearings

Consistency Determination Applications 2013-2019

HealthRight 360
Jewish Home
Kaiser Permanente
Presidio Surgical Center
Planned Parenthood

Recommended Updates

- Consolidated / streamlined list
- Removed tangential goals
- New guidelines for behavioral health, long-term care
- Process changes: align HCSMP and the IMP by applying the requirement to *institutions rather than individual facilities*

2019 HCSMP Consistency Determination Process & Guidelines

PROCESS

The Health Care Services Master Plan (HCSMP) requires that certain new medical use development projects in San Francisco apply for a Consistency Determination from the Health Commission and Planning Commission, verifying that the proposed medical use supports the HCSMP Recommendations & Guidelines.

The Planning Department, in conjunction with SFDPH, must determine whether certain Medical Use projects, as defined by the Planning Code, align with the Health Care Services Master Plan (HCSMP) by making a "Consistency Determination."

Projects Subject to HCSMP Requirements
 Projects that include Hospitals / Medical Centers (Planning Code Sections §102, §790.44, §890.44) or Health Services required to

Number	Guideline	Eligible for Incentive
RECOMMENDATION 1. INCREASE ACCESS TO APPROPRIATE CARE FOR SAN FRANCISCO'S VULNERABLE POPULATIONS.		
1.1	Increase the availability and accessibility of primary care in: <ul style="list-style-type: none"> • low-income areas (i.e., areas where the percentage of low-income residents – defined as individuals living below 200% of the Census Poverty Threshold^[1] – is greater than the San Francisco average), • areas with documented high rates of health disparities (e.g., areas in which residents face the highest rates of morbidity or premature mortality) and/or • areas with limited existing health care resources 	YES
1.2	Increase the availability and accessibility of culturally competent primary care among vulnerable subpopulations including but not limited to: <ul style="list-style-type: none"> • Medi-Cal beneficiaries, • uninsured residents, • limited English speakers, and • populations with documented high rates of health disparities. 	YES
1.3	Increase the availability and accessibility of prenatal care within neighborhoods with: <ul style="list-style-type: none"> • documented high rates of related health disparities, • for subpopulations with documented high rates of related health disparities including but not limited to Black/African American residents 	YES
1.4	Increase the availability and accessibility of dental care in/among: <ul style="list-style-type: none"> • low-income areas (i.e., areas where the percentage of low-income residents – defined as individuals living below 200% of the Census Poverty Threshold^[1] – is greater than the San Francisco average) and • areas with documented high rates of health disparities (e.g., areas in which residents face the highest rates of morbidity or premature mortality) among vulnerable subpopulations including but not limited to: <ul style="list-style-type: none"> ○ Medi-Cal beneficiaries, ○ uninsured residents, ○ limited English speakers, and ○ populations with documented high rates of health disparities. 	YES



**SUPPORTING
LEGISLATION**



SUPPORTING LEGISLATION

- **Ten-year timeline** for Plan updates with five-year **Monitoring Report**
- **Updates** to the General Plan
- **Zoning Changes:** Neighborhood Commercial controls
- **Other policies:** IMP process

Recent Legislation & Other Efforts

- Simplified permitting for Residential Care
- Mental Health SF
- Meth Task Force
- Black/African American Health Initiative

Upcoming Dates

- **January 10 - February 20, 2020: Public Comment Period**
- **Late January or Early February, 2020: Informational presentation to Health Commission**
- **February 6, 2020: Initiation of Supporting Legislation (tentative)**
- **March 12, 2020: Joint Hearing of Health and Planning Commissions**
- **Spring 2020: Board of Supervisors**



THANK YOU

Claire Lindsay
SF Department of Public Health
415.554.2667
Claire.Lindsay@sfgov.org

Sheila Nickolopoulos
SF Planning Department
415.575.9089
Sheila.Nickolopoulos@sfgov.org

For more information & updates:
www.sfplanning.org/hcsmp