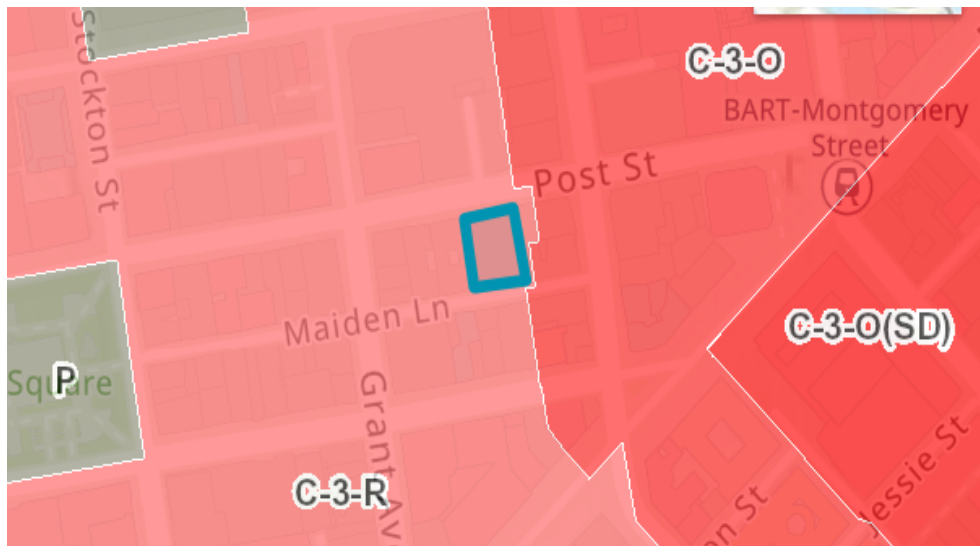


135 POST STREET: CONDITIONAL USE & OFFICE ALLOCATION





Stockton St

C-3-O

BART-Montgomery Street

Post St



Maiden Ln

C-3-O(SD)

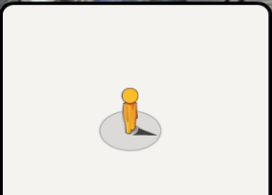
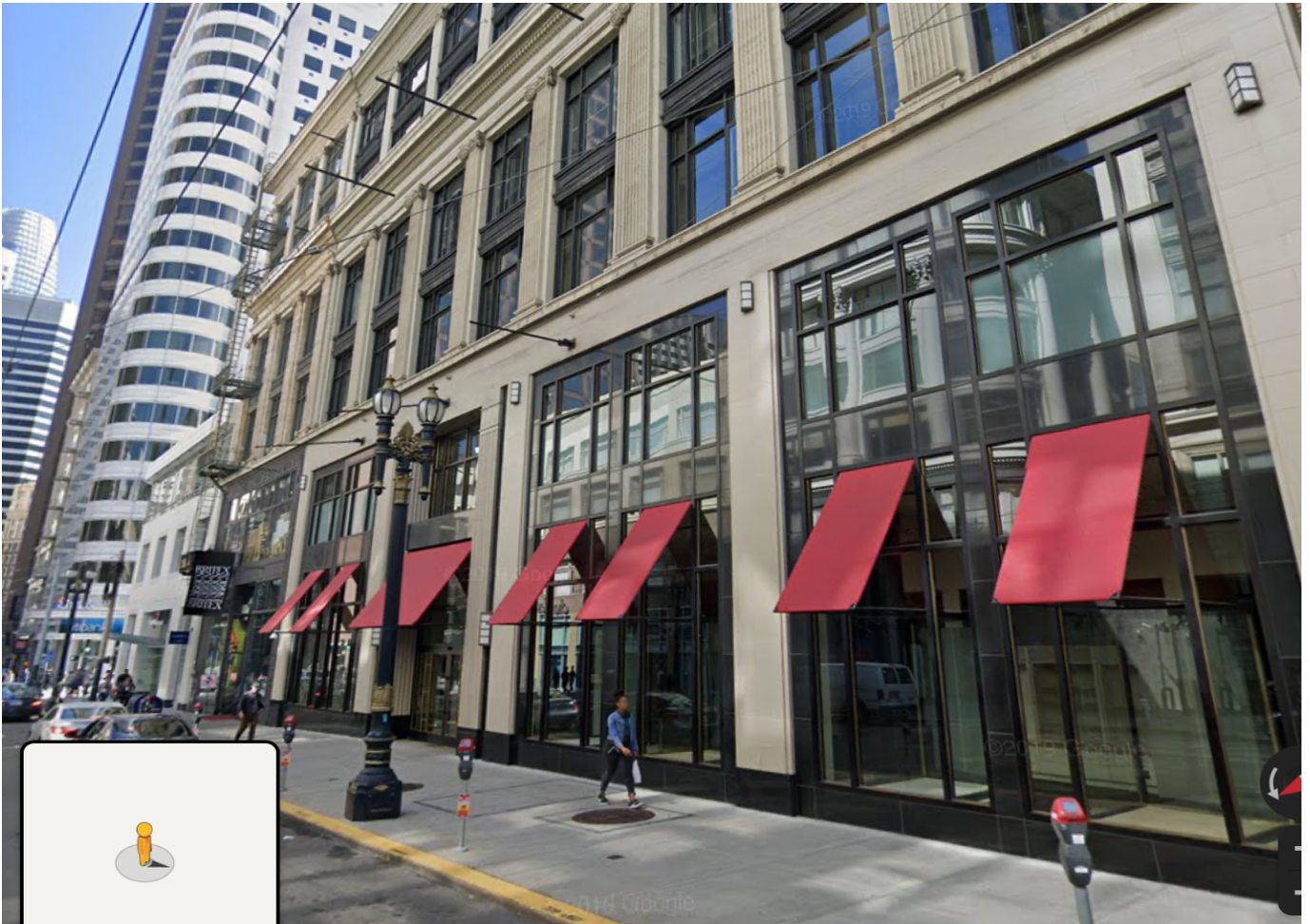
SqIPare

Grant Ave

C-3-R

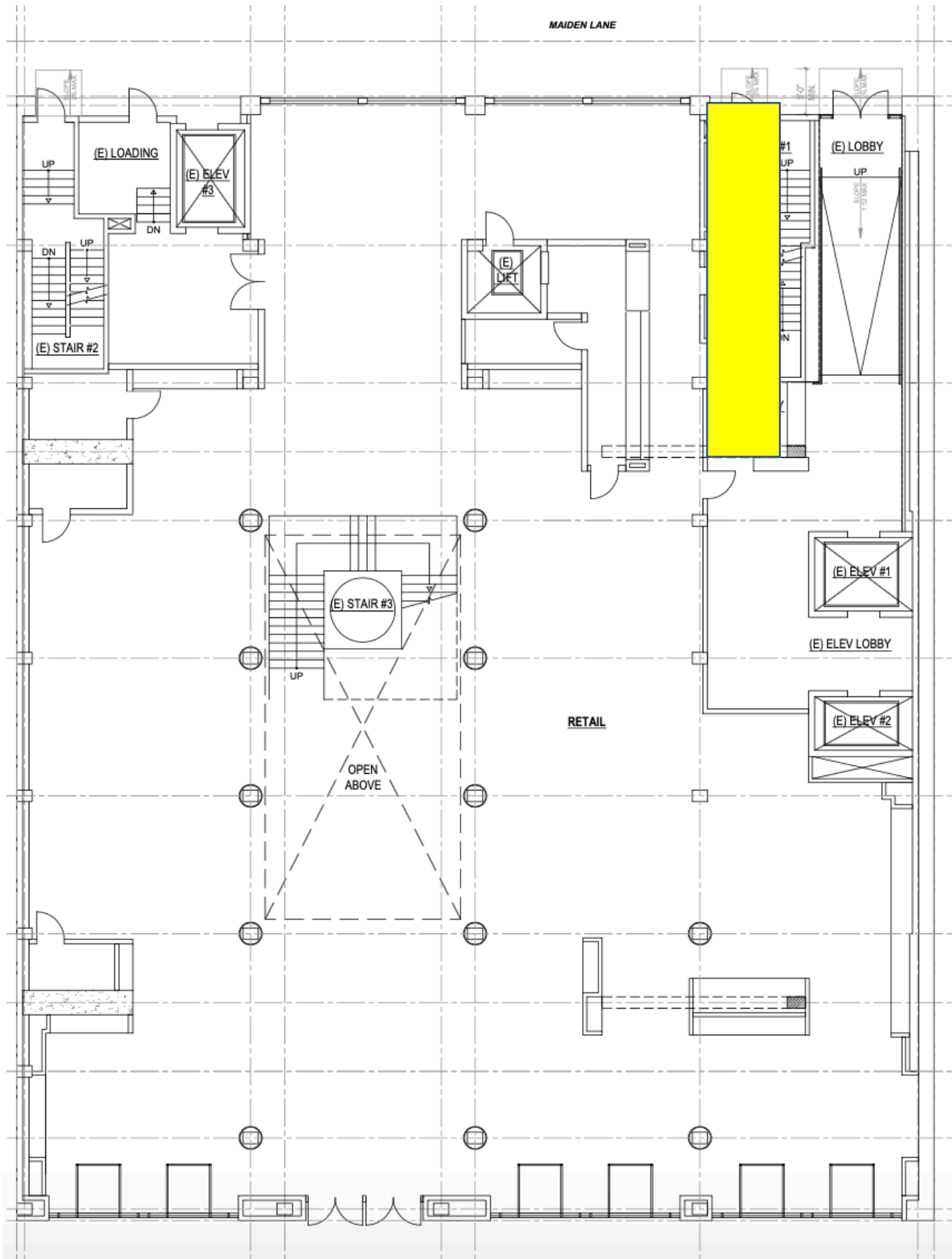
an St

Jessie St





MAIDEN LANE ACCESS TO UPPER FLOORS



135

POST

SAN FRANCISCO



Retail on the Market

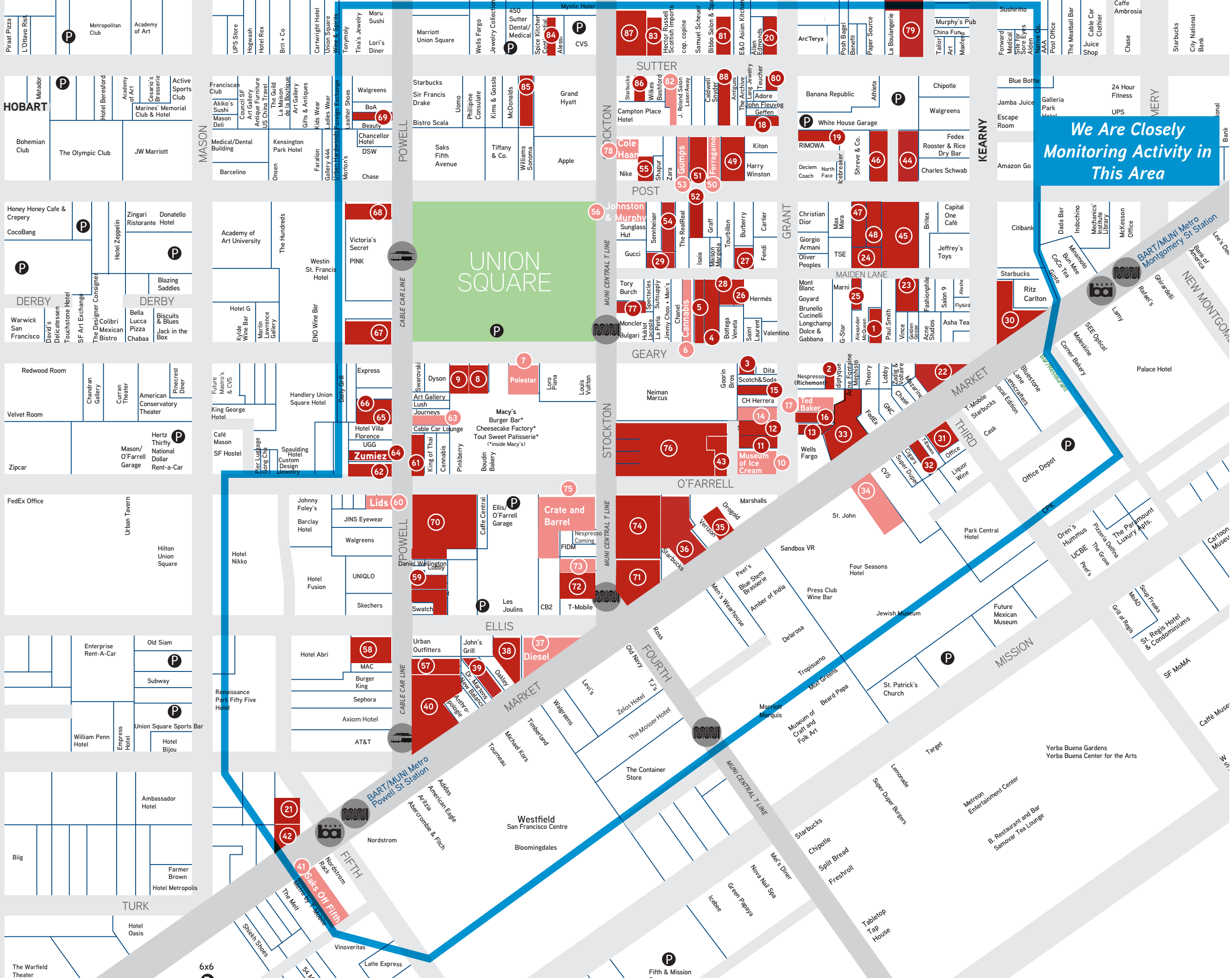
Available Spaces

- 1 Geary Street 54
- 2 Geary Street 75
- 3 Geary Street 103
- 4 Geary Street 140
- 5 Geary Street 146
- 6 Geary Street 152
- 7 Geary Street 281
- 8 Geary Street 281
- 9 Geary Street 281
- 10 Grant Avenue 1
- 11 Grant Avenue 21
- 12 Grant Avenue 33
- 13 Grant Avenue 40
- 14 Grant Avenue 39-41
- 15 Grant Avenue 51
- 16 Grant Avenue 60
- 17 Grant Avenue 80
- 18 Grant Avenue 231-233
- 19 Grant Avenue 300
- 20 Grant Avenue 301
- 21 Halladie Plaza 1
- 22 Kearny Street 1
- 23 Maiden Lane 29
- 24 Maiden Lane 50
- 25 Maiden Lane 69
- 26 Maiden Lane 115
- 27 Maiden Lane 120
- 28 Maiden Lane 125
- 29 Maiden Lane 166
- 30 Market Street 690
- 31 Market Street 703
- 32 Market Street 711
- 33 Market Street 730
- 34 Market Street 735
- 35 Market Street 764
- 36 Market Street 776
- 37 Market Street 800
- 38 Market Street 844
- 39 Market Street 846
- 40 Market Street 890
- 41 Market Street 901
- 42 Market Street 934
- 43 O'Farrell Street 26
- 44 Post Street 126
- 45 Post Street 135
- 46 Post Street 150
- 47 Post Street 155
- 48 Post Street 165
- 49 Post Street 230
- 50 Post Street 236
- 51 Post Street 240
- 52 Post Street 245
- 53 Post Street 250
- 54 Post Street 255
- 55 Post Street 278
- 56 Post Street 299
- 57 Powell Street 50
- 58 Powell Street 69
- 59 Powell Street 102-120
- 60 Powell Street 167
- 61 Powell Street 200
- 62 Powell Street 201
- 63 Powell Street 207
- 64 Powell Street 225
- 65 Powell Street 228
- 66 Powell Street 235-237
- 67 Powell Street 331
- 68 Powell Street 345
- 69 Powell Street 439
- 70 Powell Street 150
- 71 Stockton Street 2
- 72 Stockton Street 17-25
- 73 Stockton Street 39
- 74 Stockton Street 48
- 75 Stockton Street 55
- 76 Stockton Street 100
- 77 Stockton Street 216
- 78 Stockton Street 324
- 79 Sutter Street 214
- 80 Sutter Street 301
- 81 Sutter Street 330
- 82 Sutter Street 361
- 83 Sutter Street 370
- 84 Sutter Street 414
- 85 Sutter Street 437
- 86 Sutter Street 450
- 87 Sutter Street 390
- 88 Sutter Street 333

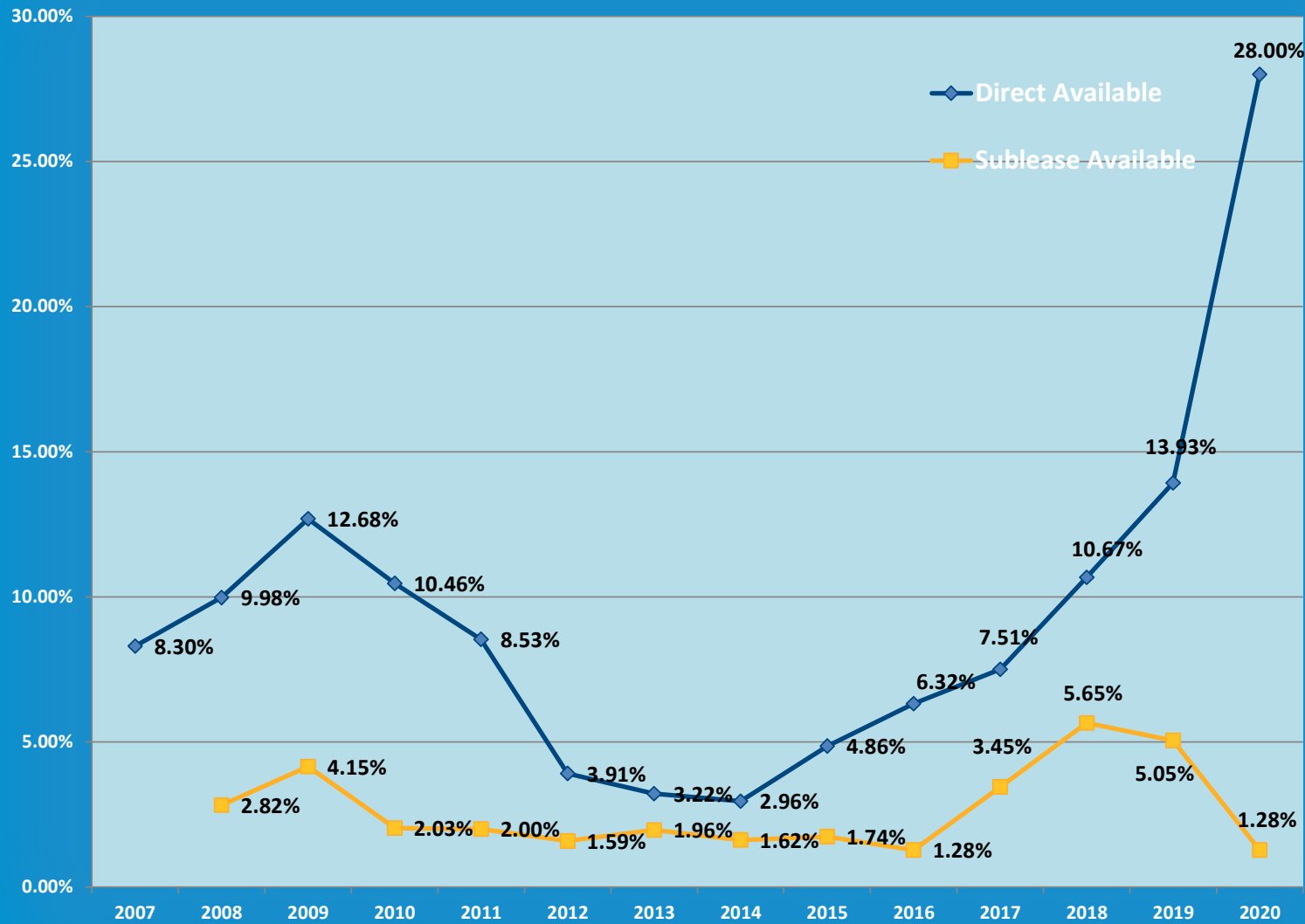
We Are Closely Monitoring Activity in This Area

Shadow Space – Available but current tenant still occupies space

(UPDATED DECEMBER, 2020)



Union Square Historical Ground Floor Vacancy



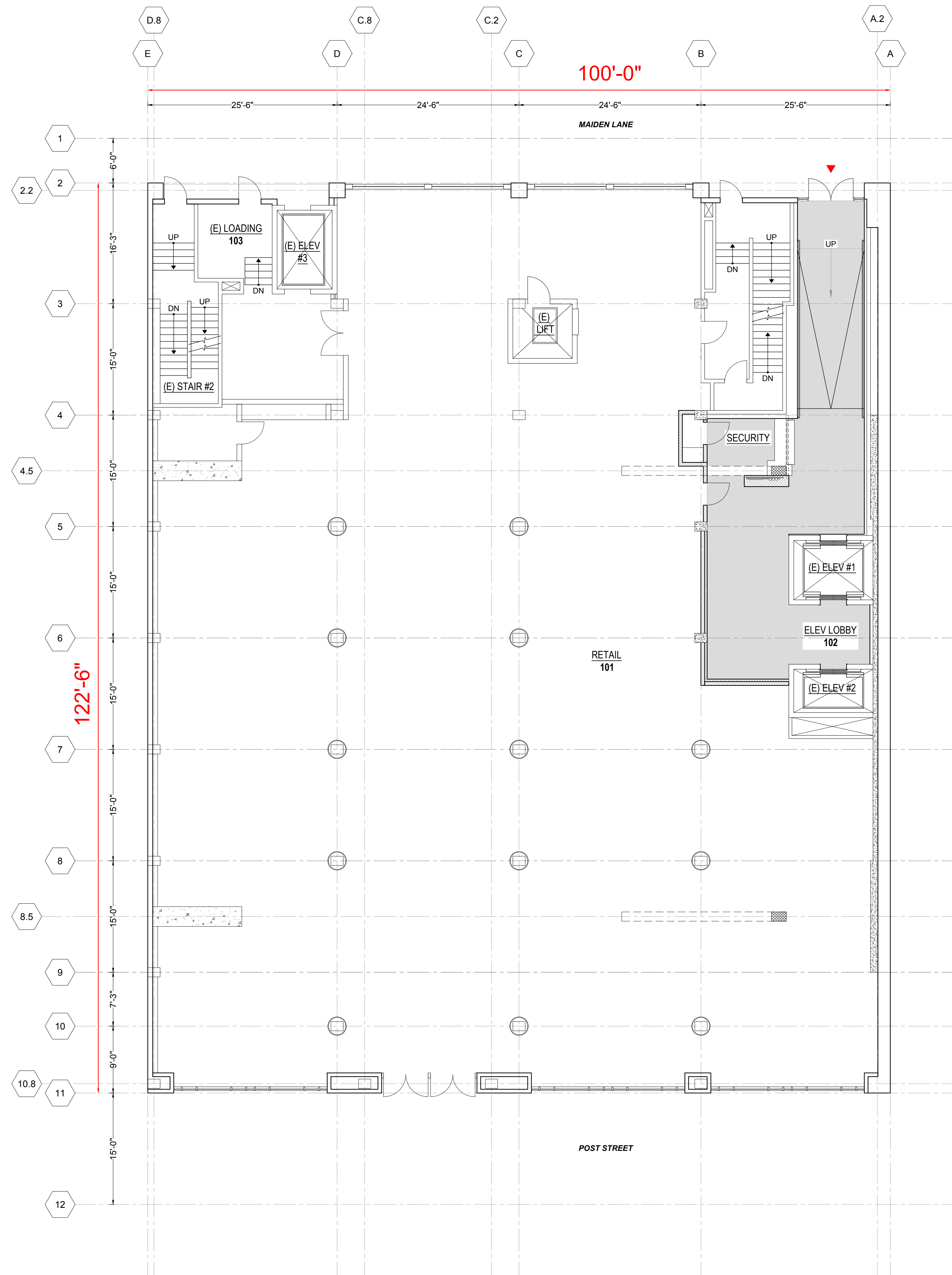
224 spaces are monitored in the prime high streets of the Union Square district.

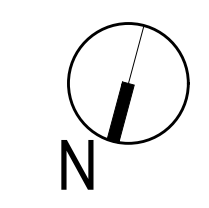
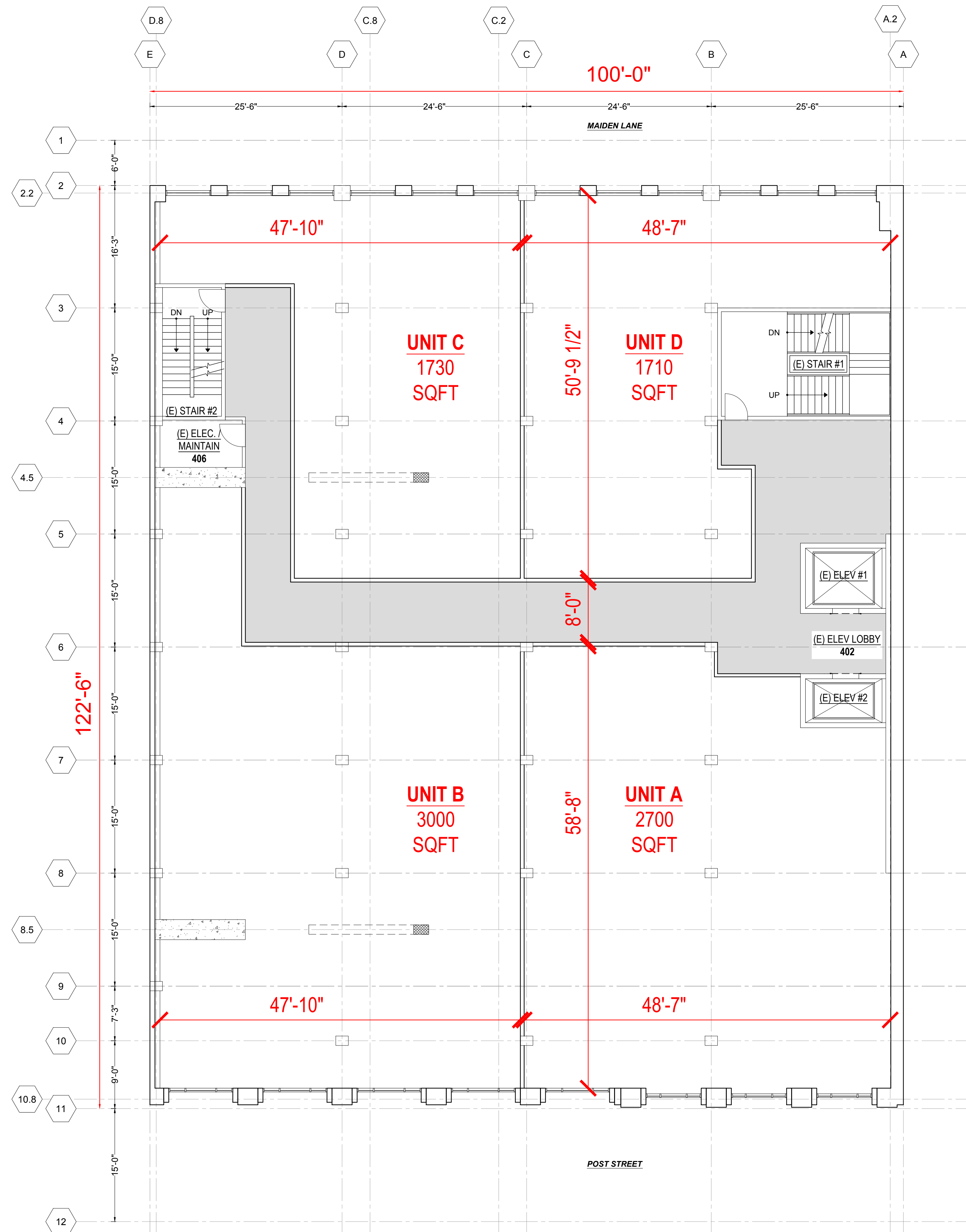
Available Spaces: 69
 Direct: 67
 Sublease: 2

Direct: 244,231 sq ft
 Sublease: 11,126 sq ft
 Total Available: 255,357 sq ft

In addition to the 69 spaces available and actively being marketed for direct or sublease, there are an additional 16 properties that could be made available. These properties are not being marketed but tenants have expressed interest in vacating or the lease is expiring soon. This brings our total Union Square ground floor availability to 35.86% of our inventory.







RESIDENTIAL UNITS ON FLOORS 3 TO 6 ARE NOT A POSSIBILITY DUE TO THE FOLLOWING REASONS:

- FLOOR PLATE TOO DEEP BETWEEN POST ST AND MAIDEN LN
- UNITS WOULD BE TOO DEEP AND WITH THE WINDOW LINE ONLY AT ONE END OF EACH UNIT, THERE WOULD BE INSUFFICIENT NATURAL LIGHT PENETRATION
- APPROXIMATE CLEAR HEIGHT OF 12'-0" ON EACH FLOOR - INSUFFICIENT HEIGHT TO CREATE A LOFT TYPE UNIT

135 POST STREET: CONDITIONAL USE & OFFICE ALLOCATION

