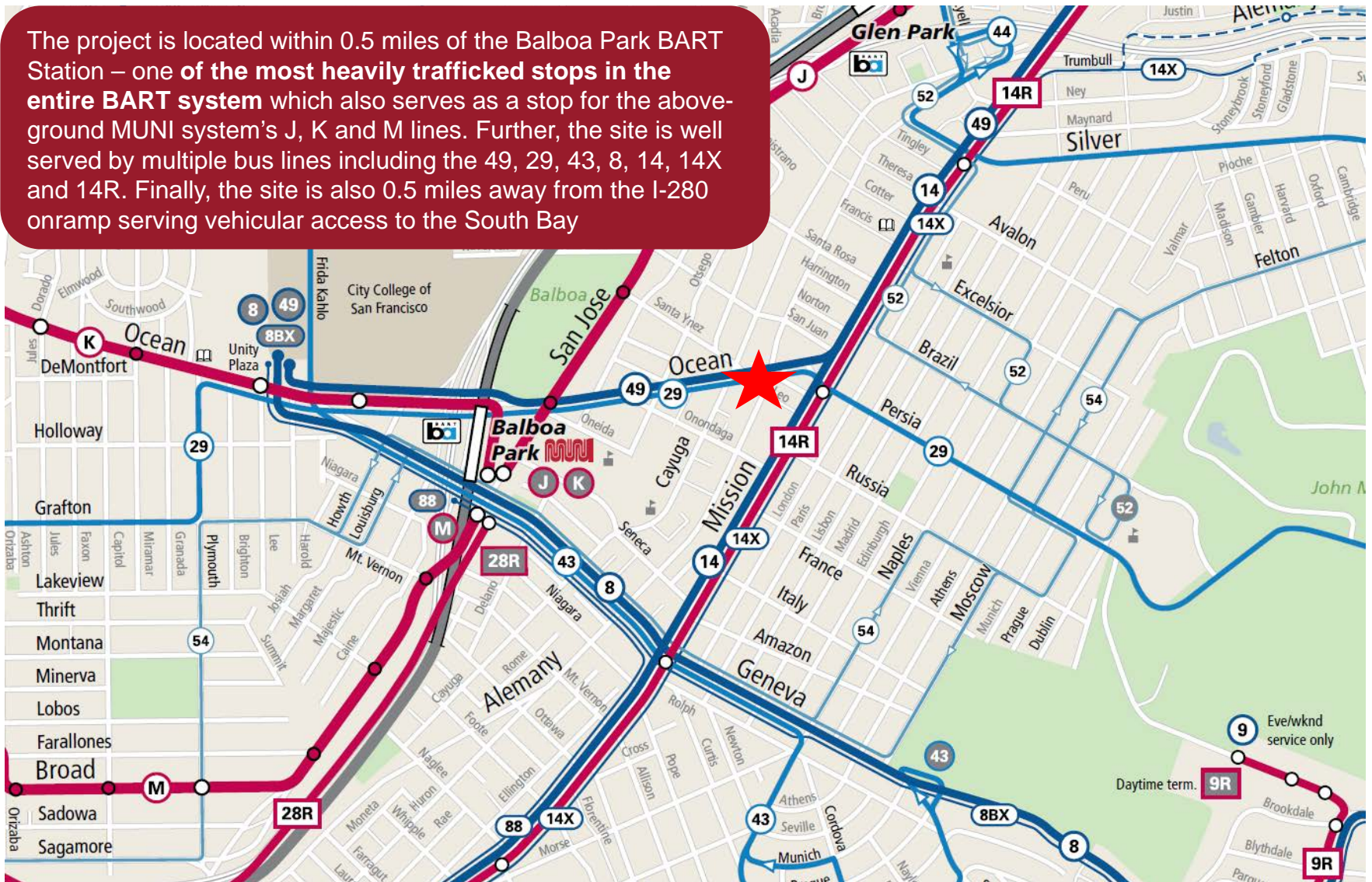


SITE OVERVIEW



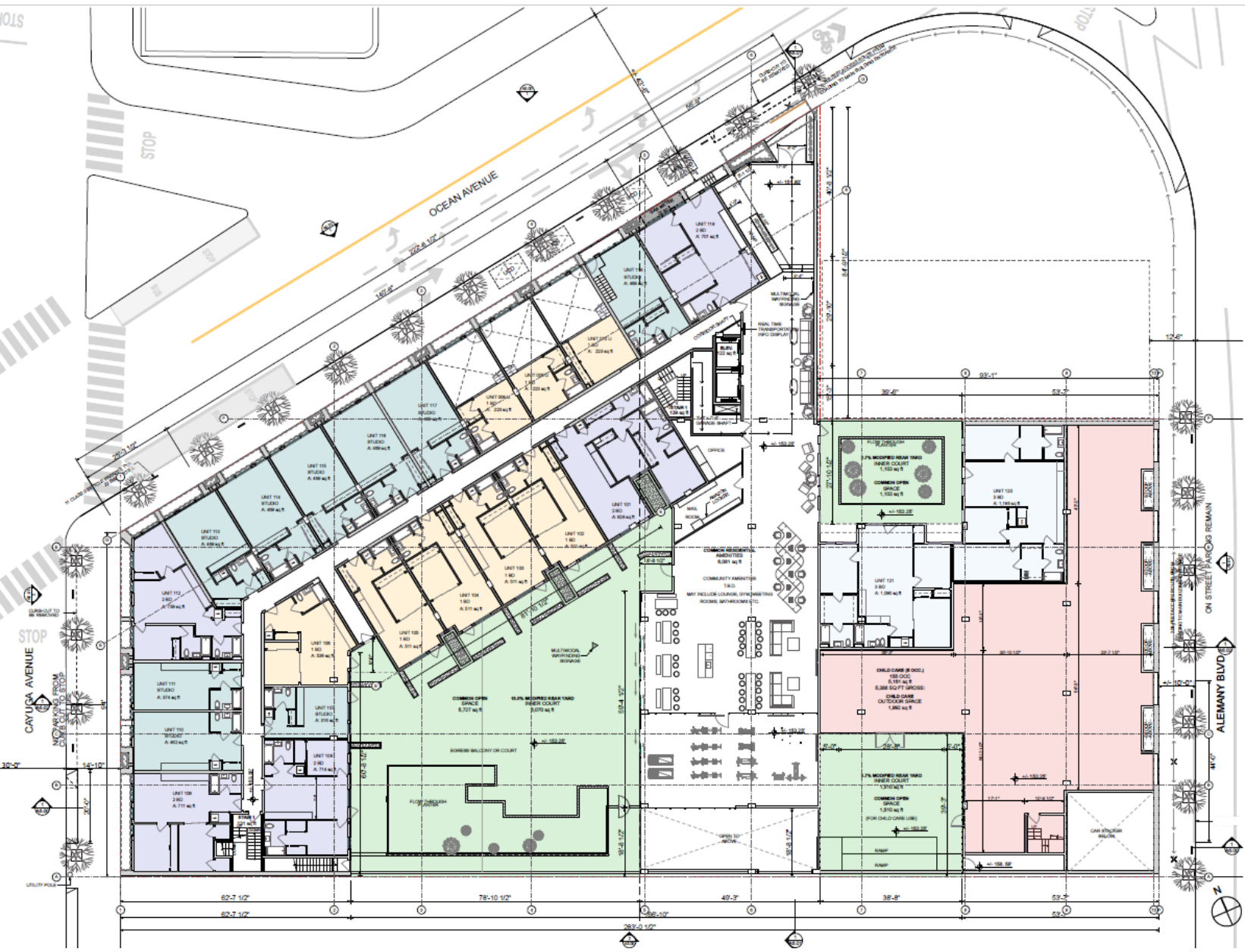
TRANSIT ORIENTED DEVELOPMENT

The project is located within 0.5 miles of the Balboa Park BART Station – one of the most heavily trafficked stops in the entire BART system which also serves as a stop for the above-ground MUNI system's J, K and M lines. Further, the site is well served by multiple bus lines including the 49, 29, 43, 8, 14, 14X and 14R. Finally, the site is also 0.5 miles away from the I-280 onramp serving vehicular access to the South Bay



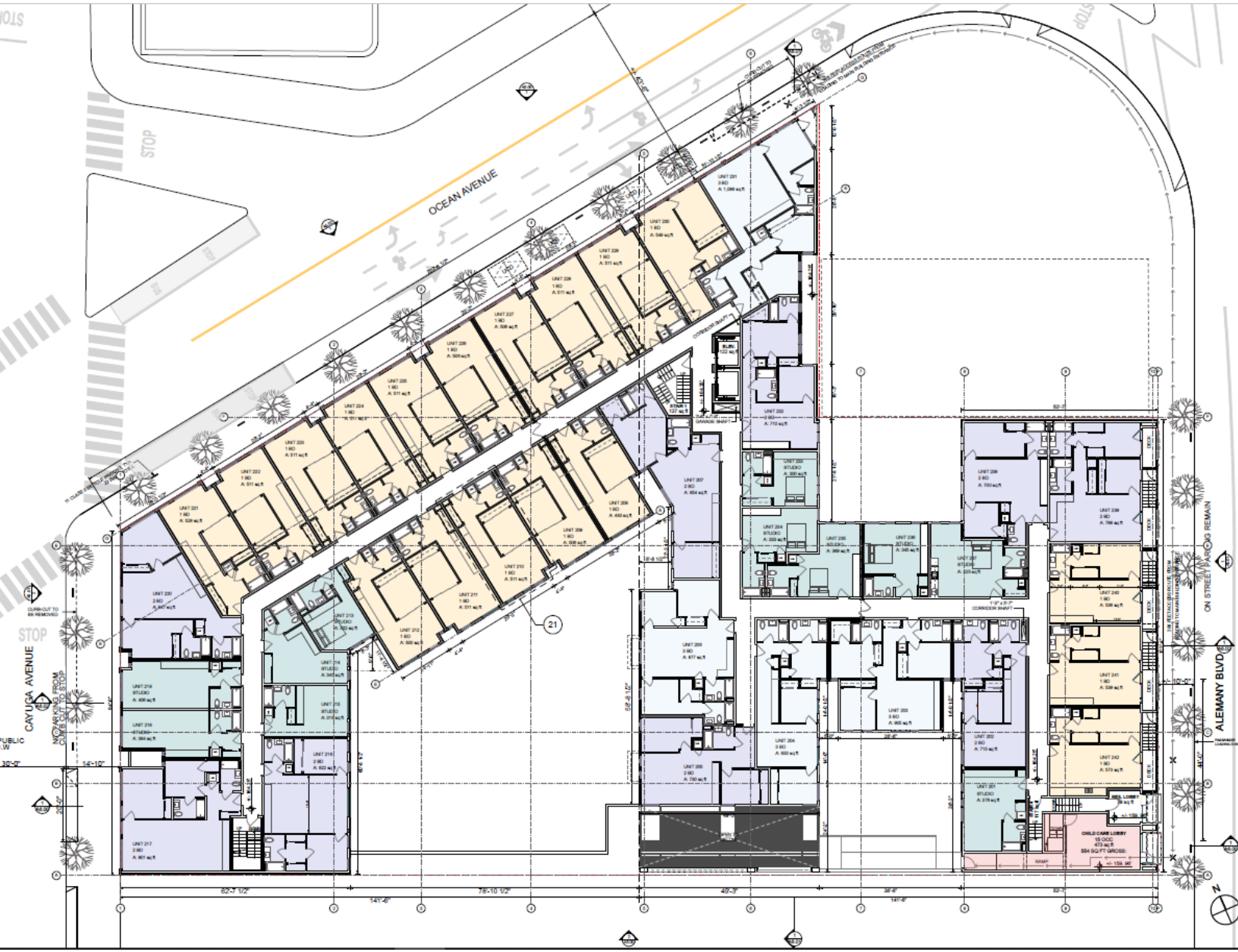
65 OCEAN





- STUDIO
- 1 BD
- 2 BD
- 3 BD
- CHILD CARE
- COMMON SPACE





- STUDIO
- 1 BD
- 2 BD
- 3 BD
- CHILD CARE
- COMMON SPACE

