

**478-84 HAIGHT STREET**

**#2016-013012**

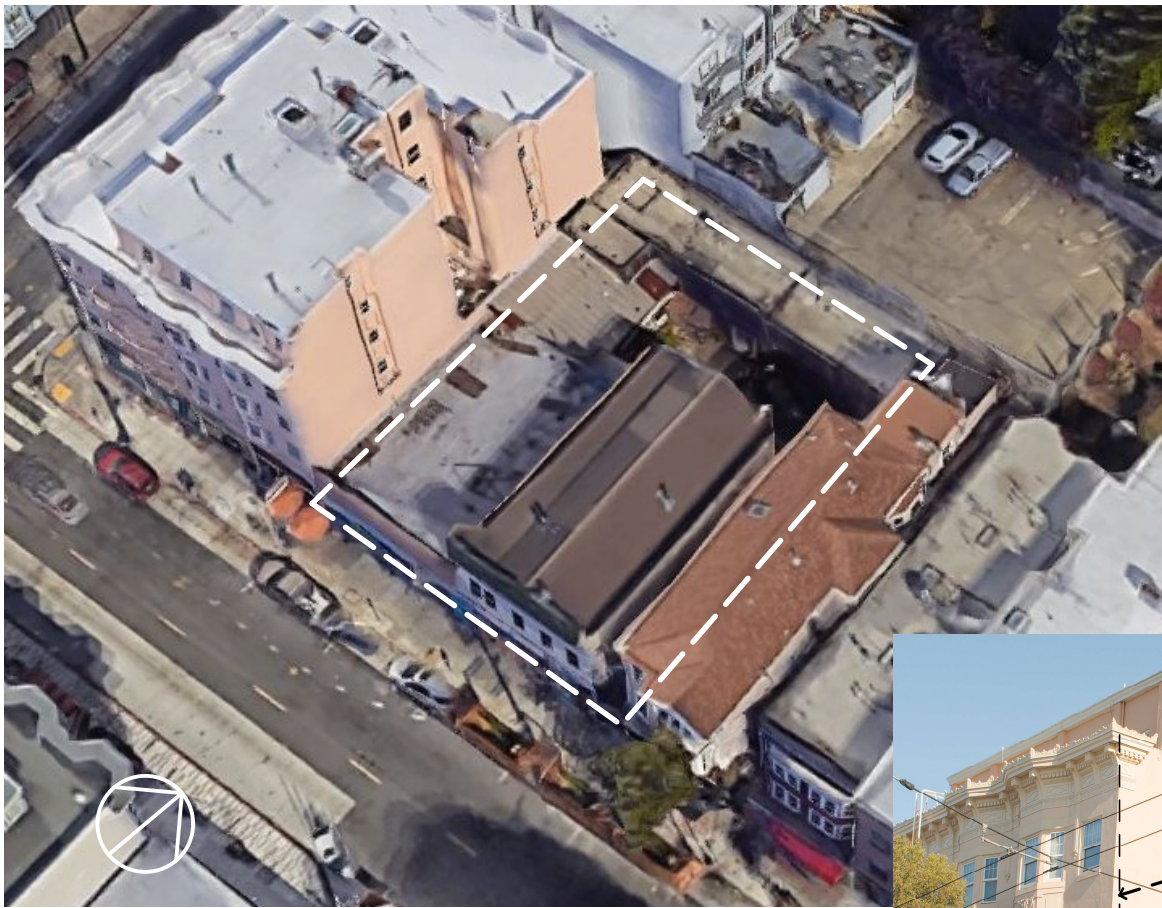
**CONDITIONAL USE AUTHORIZATION FOR  
RESIDENTIAL DEMOLITION &  
NEW 18 UNIT BUILDING WITH CHILDCARE**

---

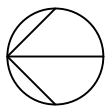
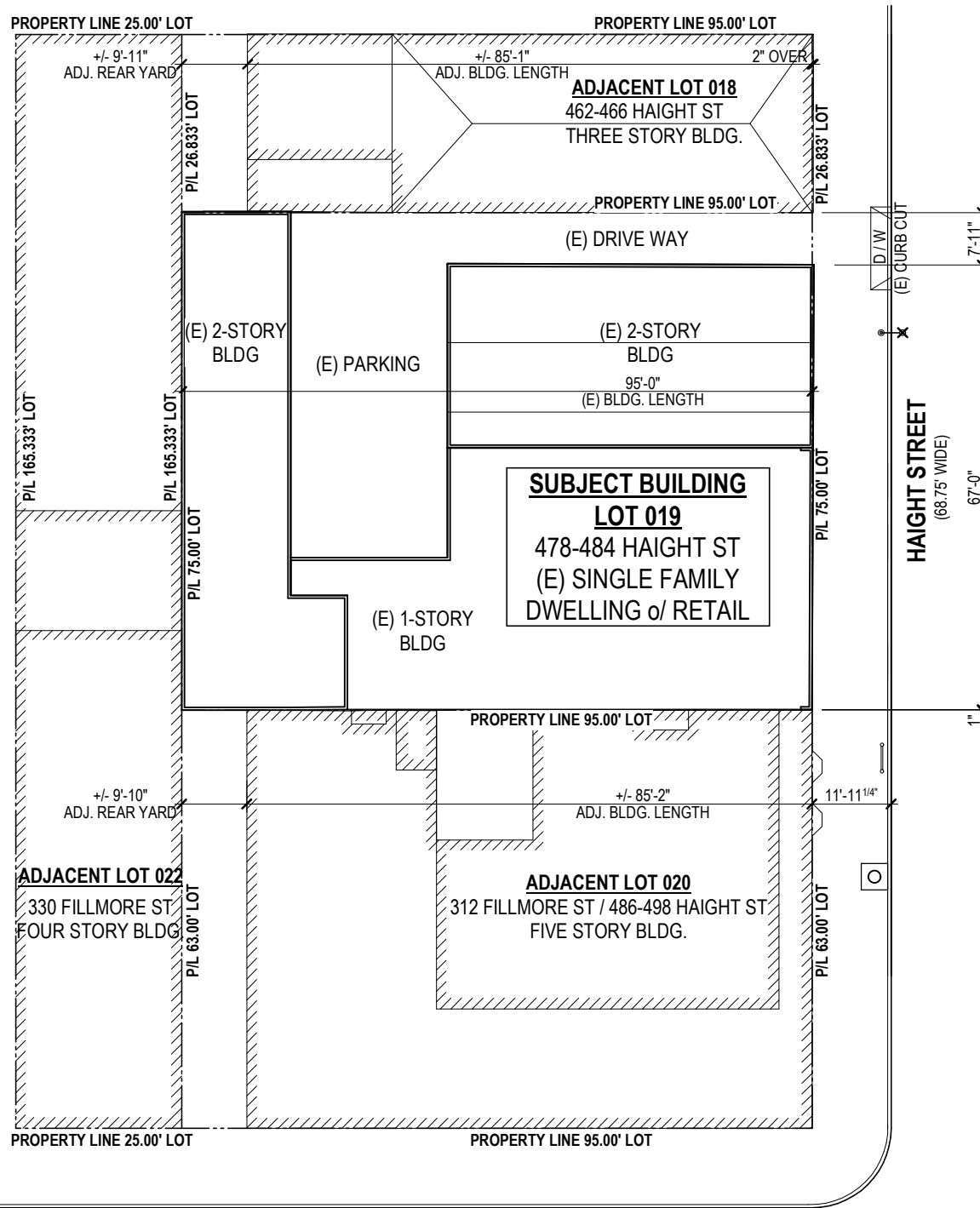
**S | L | A**

SCHAUB LY  
ARCHITECTS

---

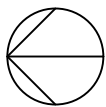
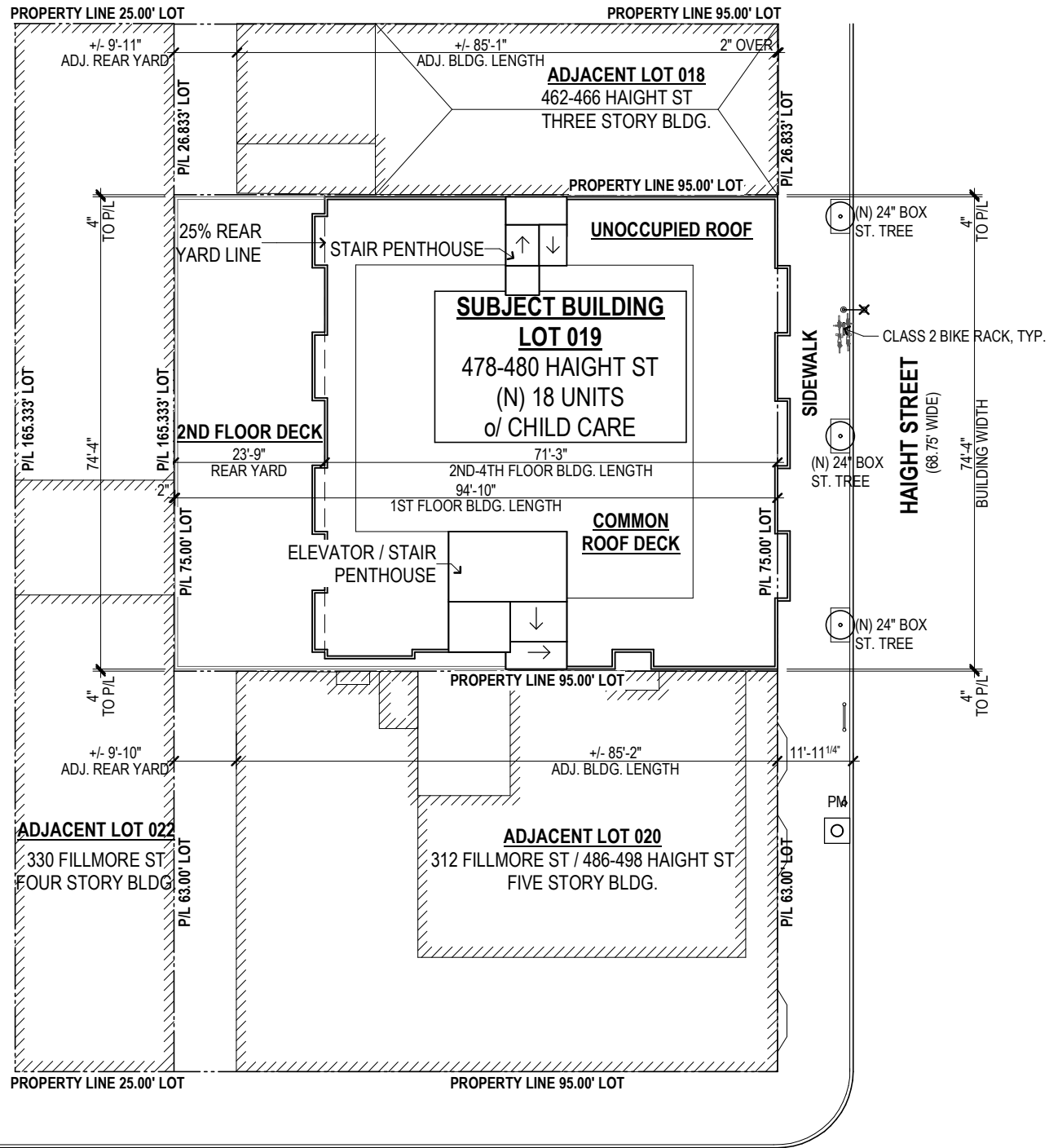


**2** EXISTING BUILDING  
478-84 HAIGHT STREET  
#2016-013012



**3** EXISTING SITE PLAN  
 478-84 HAIGHT STREET  
 #2016-013012

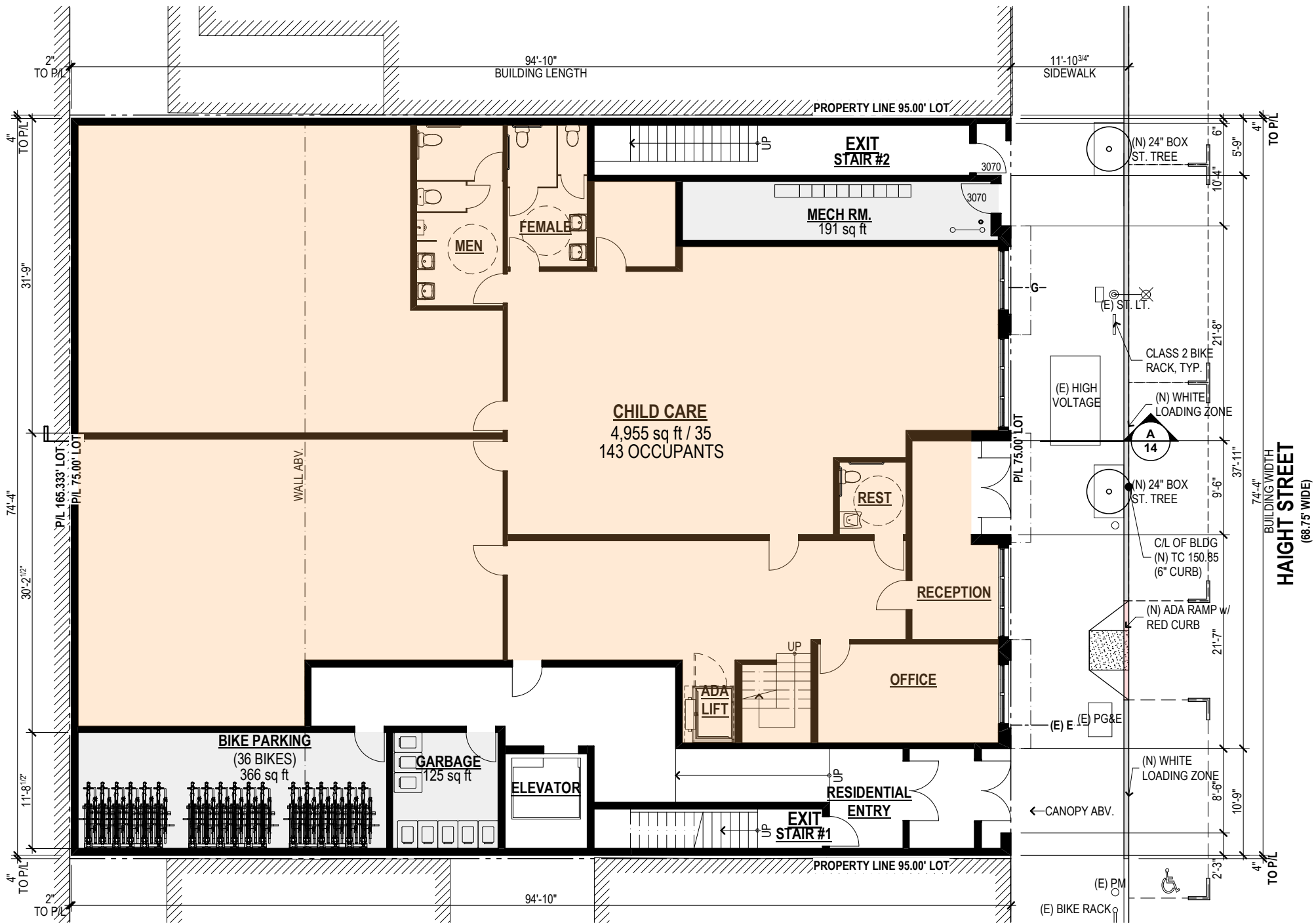
**FILLMORE STREET**  
 68.75' WIDE)



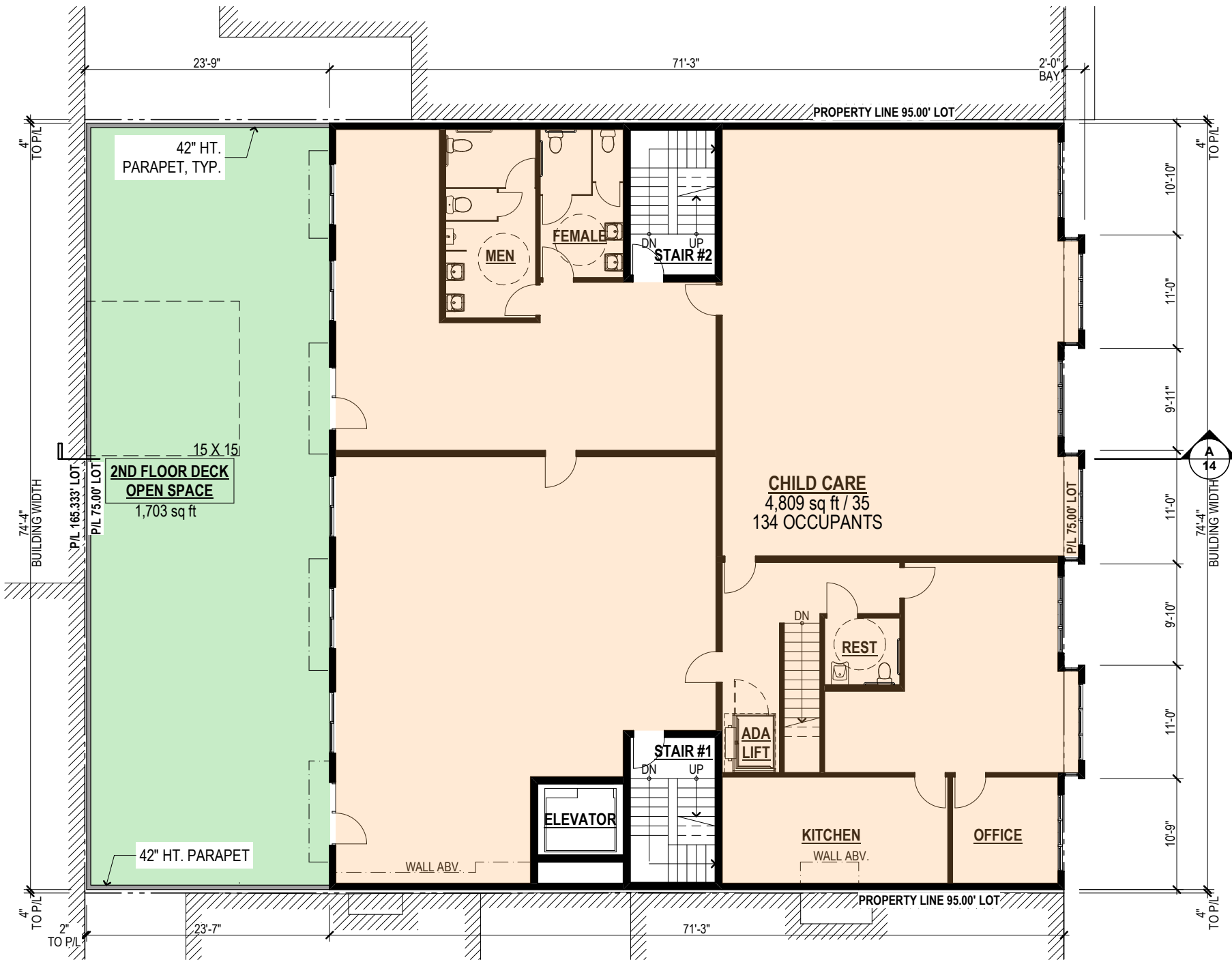
4

**PROPOSED SITE PLAN**  
478-84 HAIGHT STREET  
#2016-013012

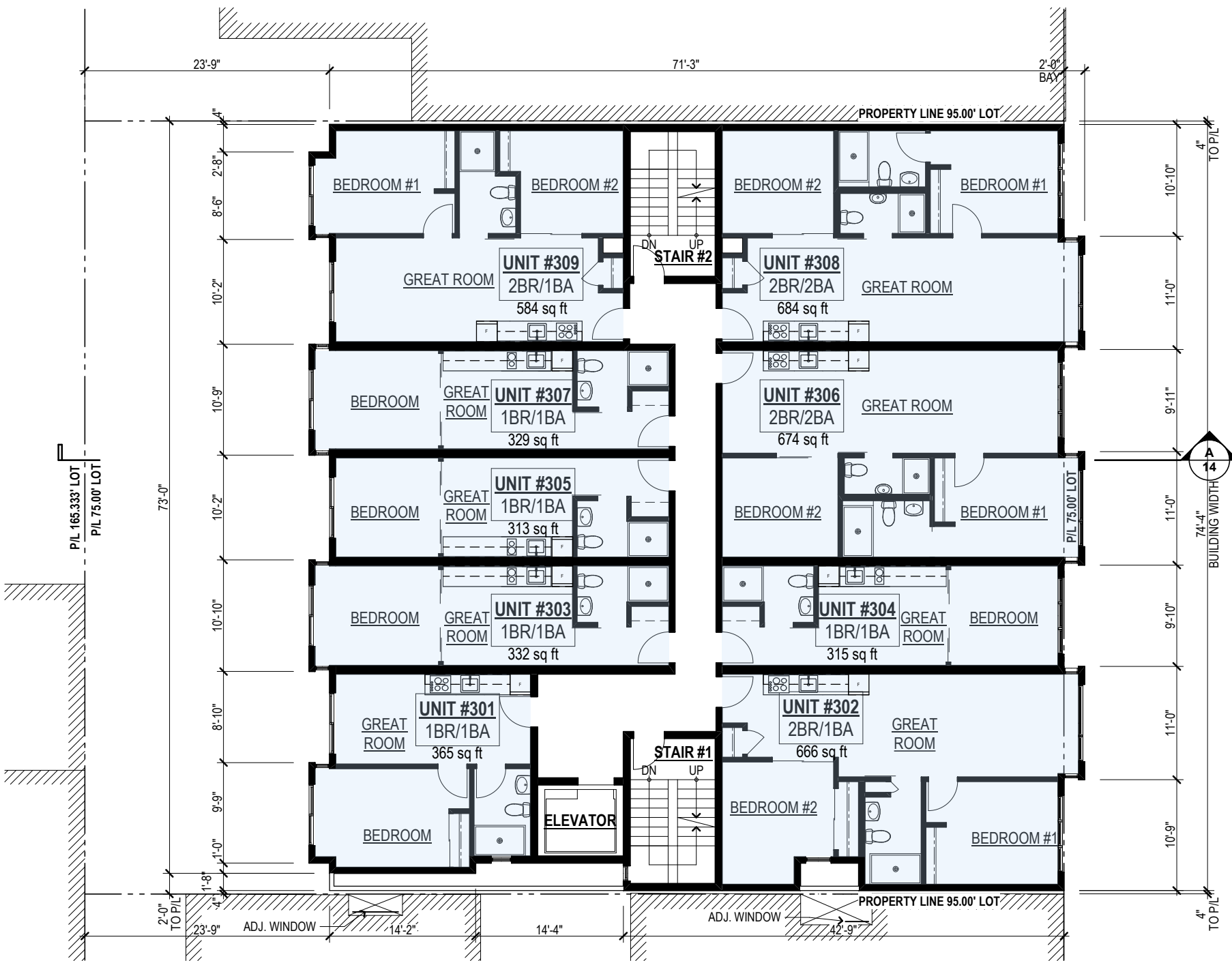
**FILLMORE STREET**  
(68.75' WIDE)



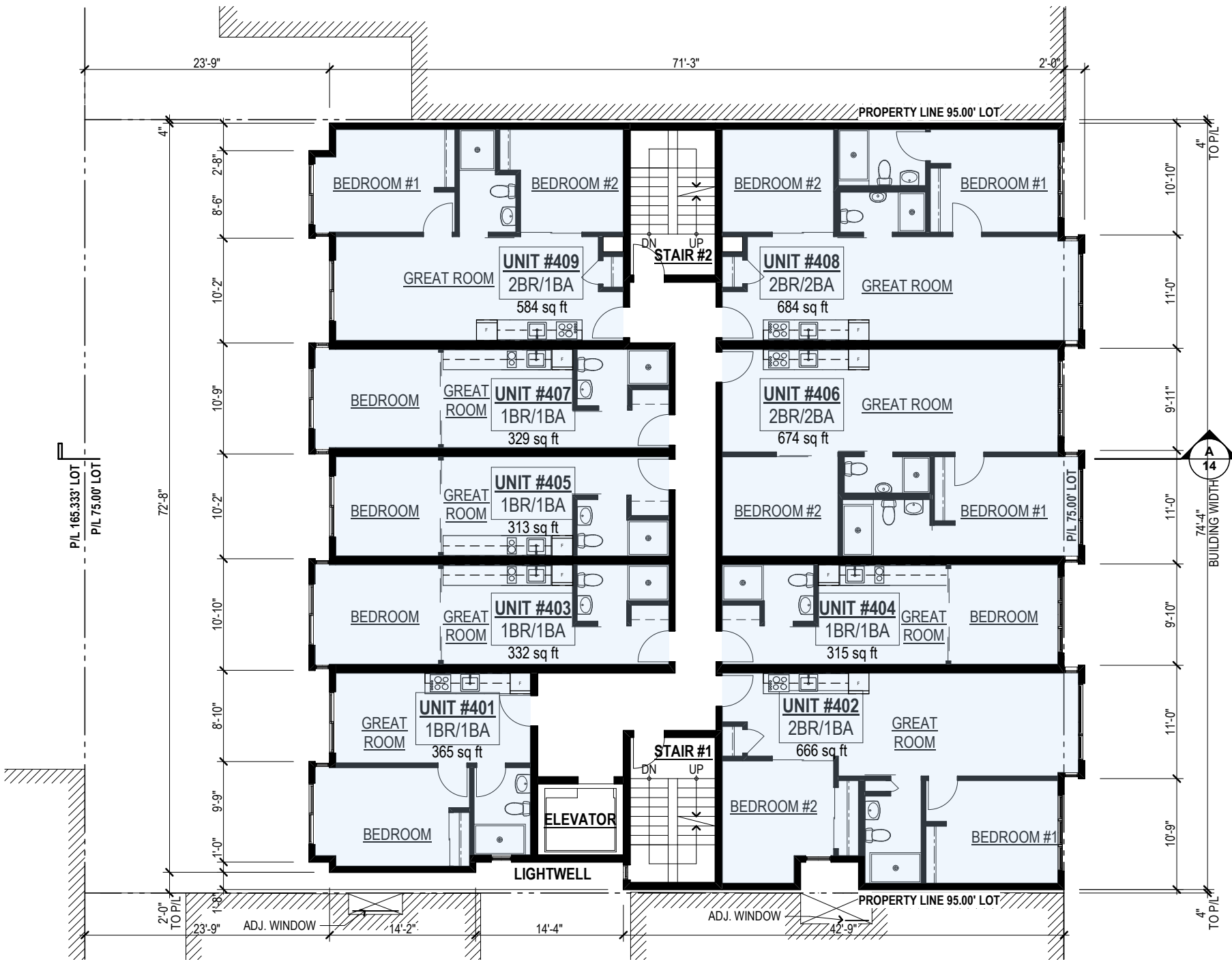
**5** **GROUND FLOOR PLAN**  
 478-84 HAIGHT STREET  
 #2016-013012



**6 SECOND FLOOR PLAN**  
 478-84 HAIGHT STREET  
 #2016-013012

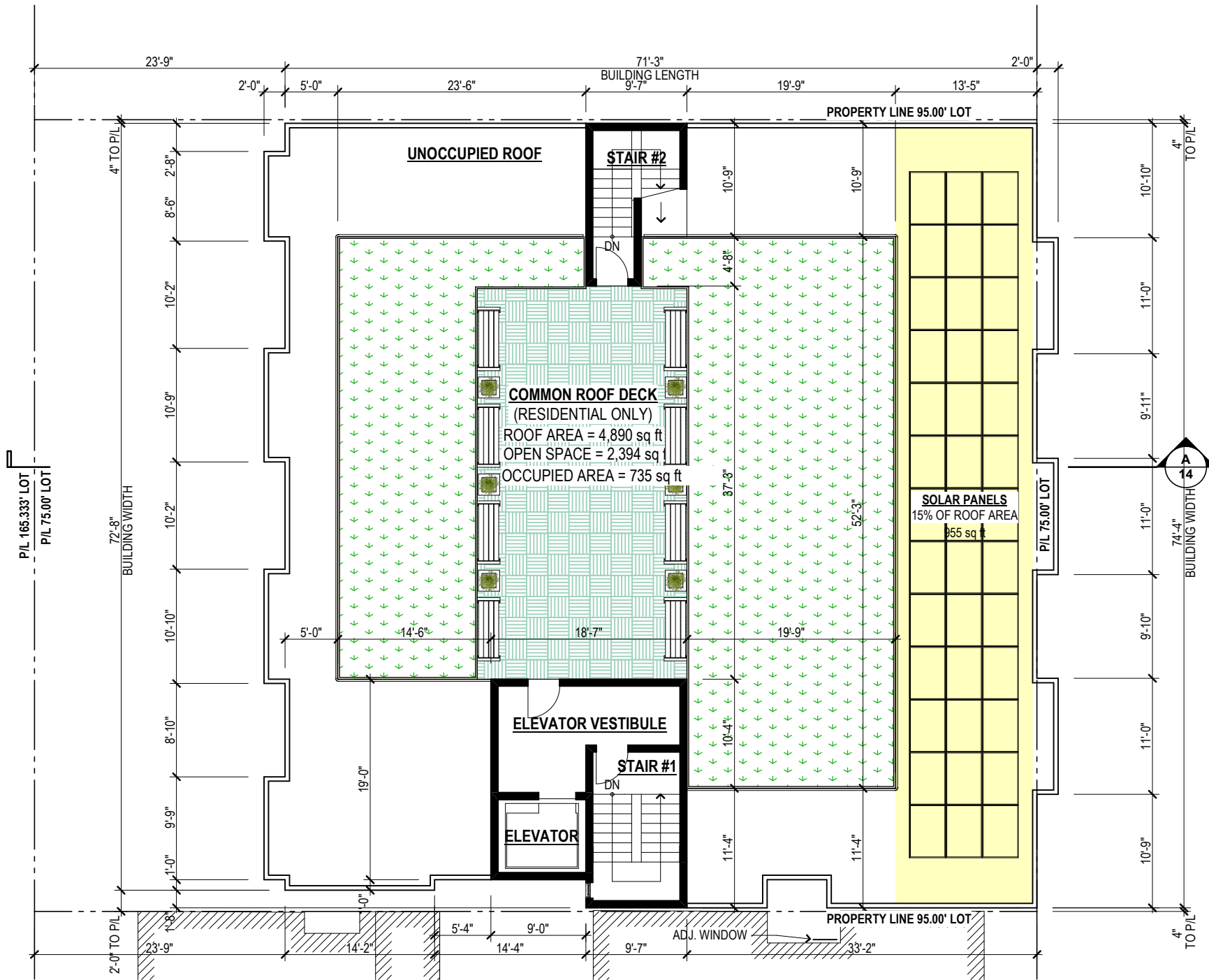


**7 THIRD FLOOR PLAN**  
478-84 HAIGHT STREET  
#2016-013012



**8** **FOURTH FLOOR PLAN**  
 478-84 HAIGHT STREET  
 #2016-013012





9

**ROOF PLAN**

478-84 HAIGHT STREET

#2016-013012



ADJ. BLDG. 312 FILLMORE ST.  
& 486-498 HAIGHT ST.

SUBJECT BLDG. 478-480 HAIGHT ST.

ADJ. BLDG. 462-466 HAIGHT

12" WOOD OVERHANG

DOUBLE PANE WINDOW  
"MARVIN ESSENTIAL  
COLLECTION" OR EQ.

4" WD. SIDING, TYP.

3-COAT EXTERIOR  
STUCCO, TYP.

WOOD TRIM, TYP.  
ALUM. CANOPY

6" WD. SIDING, TYP.

3-COAT EXTERIOR STUCCO W/ 1/2"  
ALUMINUM REVEAL AT 24" INTERVAL

RUNNING BOND  
BRICK CLADDING

C/L OF BLDG  
(N) TC 150.85  
6" CURB

STOREFRONT SYSTEM  
CLR. TEMP GL. IN BRONZE  
ANODIZED ALUM. FRAME

PRECAST CONCRETE  
WINDOW SILL, TYP.

9'-0" PENTHOUSE

ROOF  
+40'

FOURTH FLOOR  
+30'-6"

THIRD FLOOR  
+21'

SECOND FLOOR  
+11'-6"

WOOD TRIM

GROUND FLOOR  
±0"

HAIGHT STREET

**10** FRONT (SOUTH) ELEVATION  
478-84 HAIGHT STREET  
#2016-013012

ADJ. BLDG. 462-466 HAIGHT

SUBJECT BLDG. 478-480 HAIGHT ST.

ADJ. BLDG. 312 FILLMORE ST.  
& 486-498 HAIGHT ST.

P/L

P/L



1X8 HORIZONTAL SIDING BY  
HARDIEPLANK OR EQ., TYP.

DOUBLE PANE WINDOW  
"MARVIN ESSENTIAL  
COLLECTION" OR EQ., TYP.

42" HT. PARAPET, TYP.

RETAINING WALL BEHIND

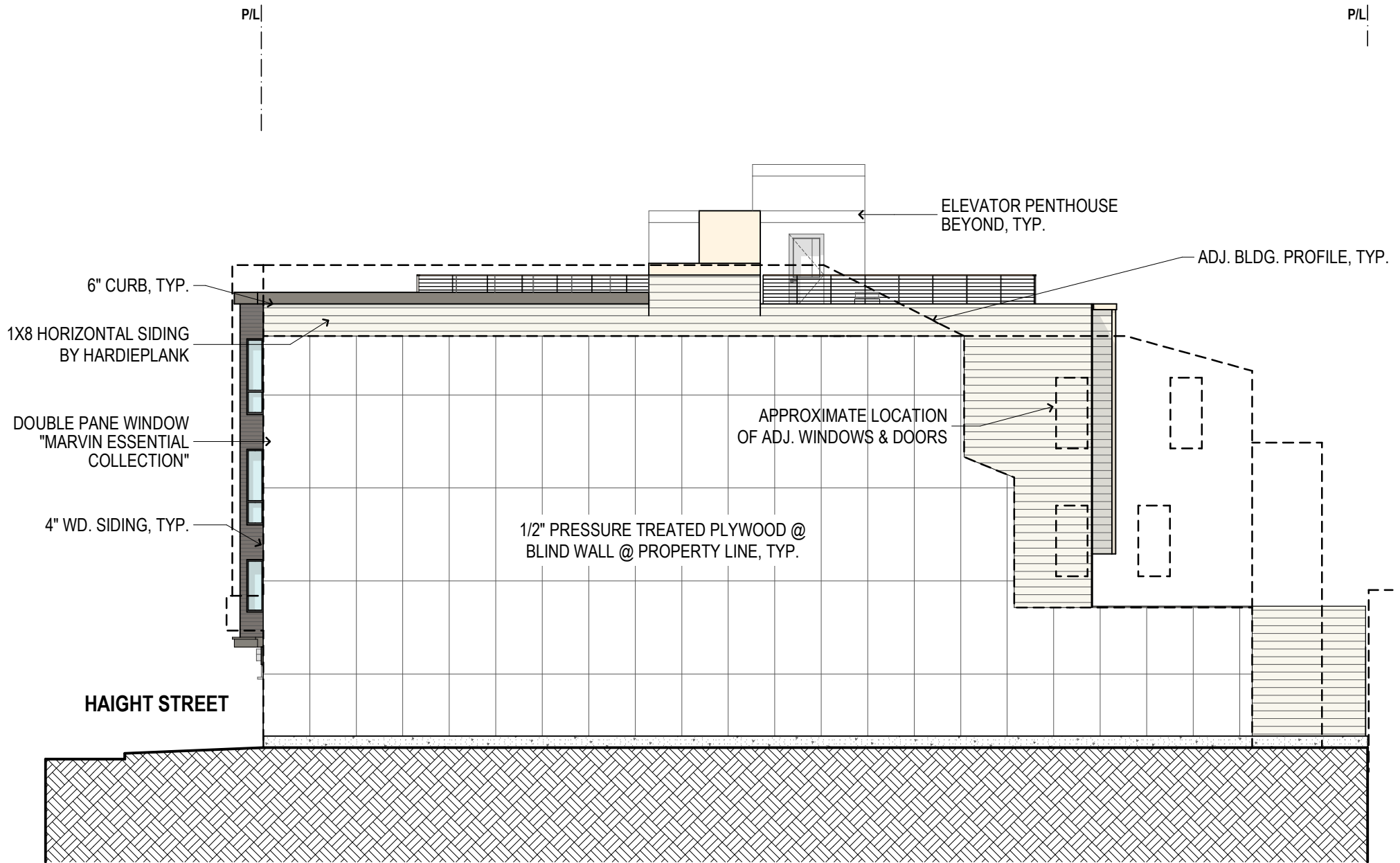
1/2" PRESSURE TREATED  
PLYWOOD @ BLIND WALL  
@ PROPERTY LINE, TYP.

11

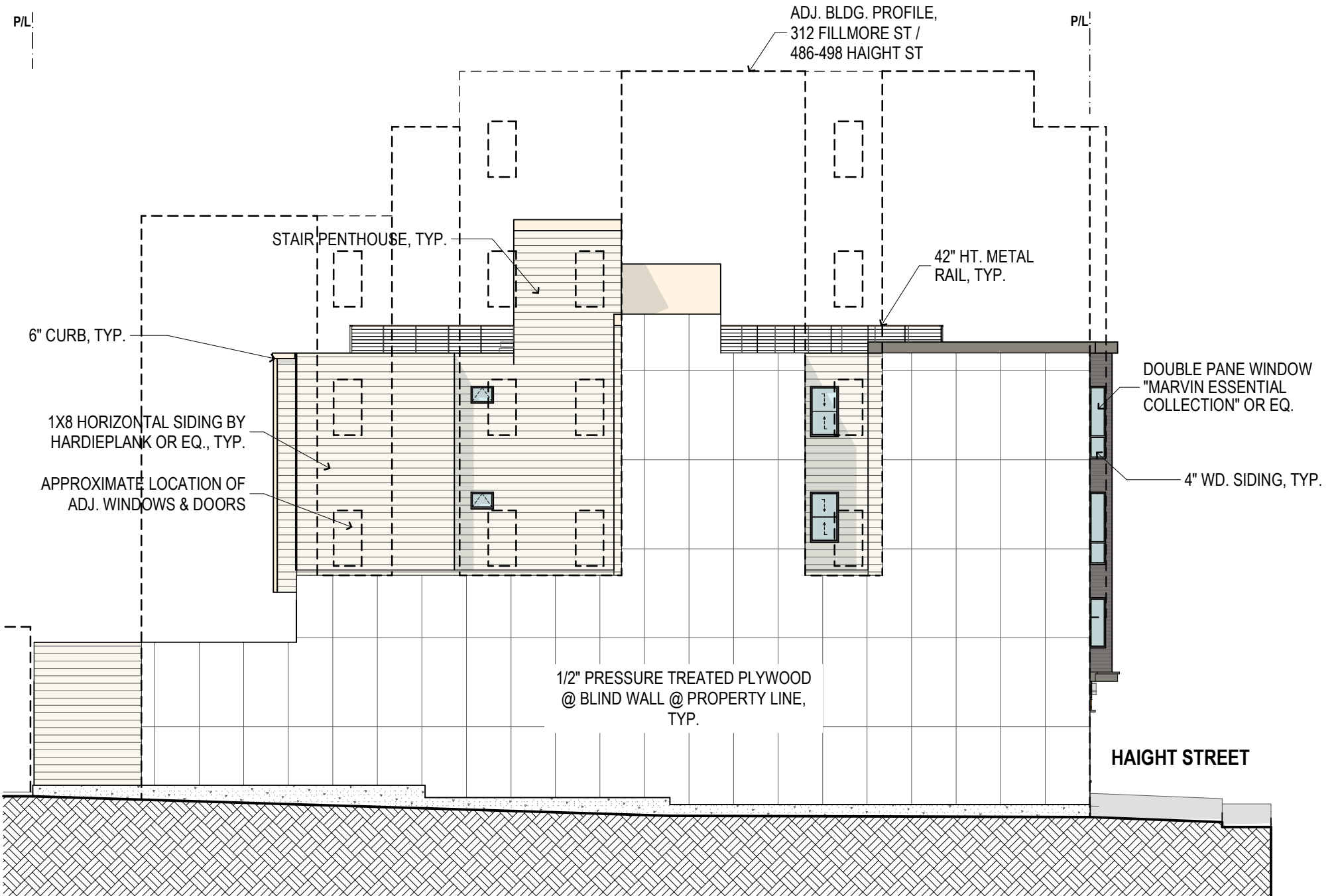
**REAR (NORTH) ELEVATION**

478-84 HAIGHT STREET

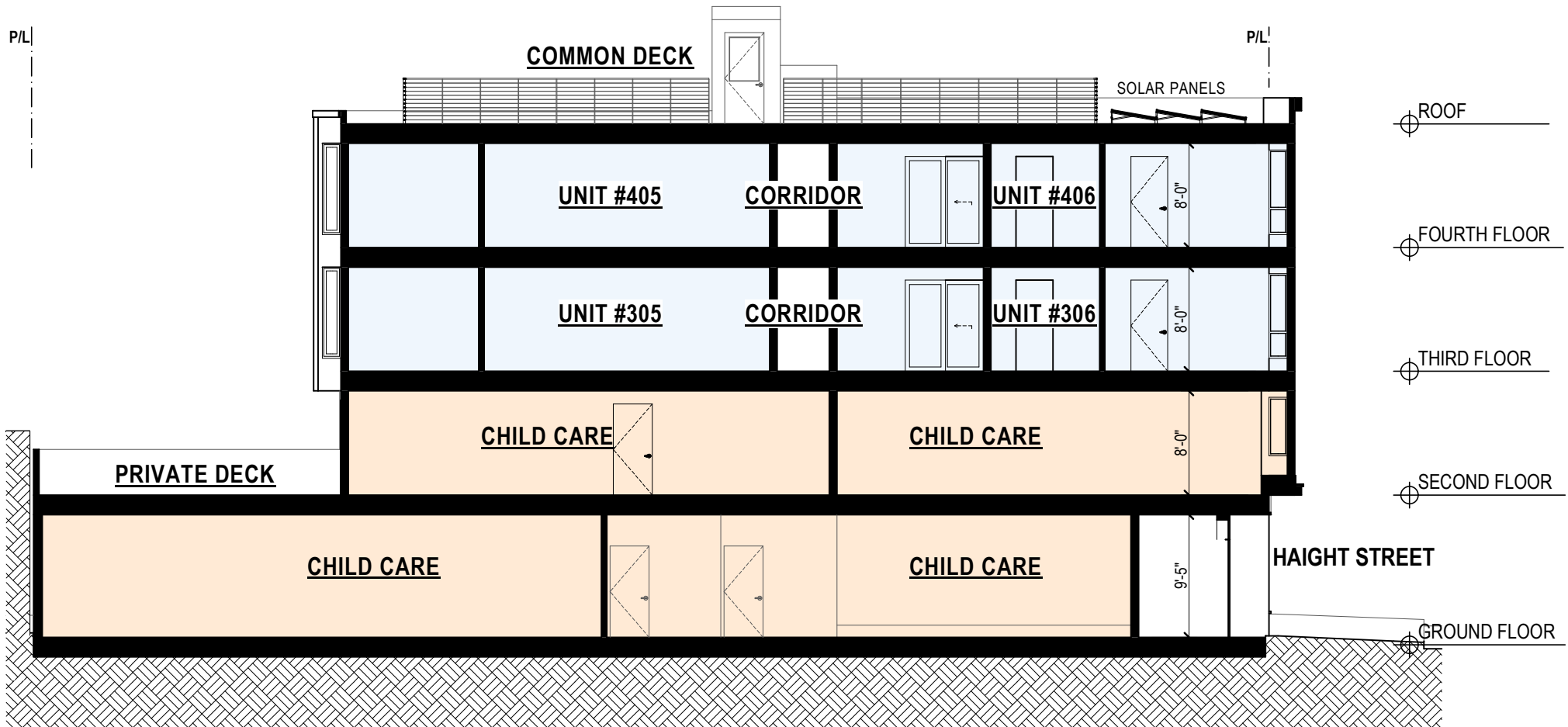
#2016-013012



**12** RIGHT (EAST) ELEVATION  
 478-84 HAIGHT STREET  
 #2016-013012



**13** LEFT (WEST) ELEVATION  
 478-84 HAIGHT STREET  
 #2016-013012



**14** **LONGITUDINAL SECTION A**  
 478-84 HAIGHT STREET  
 #2016-013012



15 **BIRDSEYE**  
478-84 HAIGHT STREET  
#2016-013012

---



SUBJECT BUILDING

HAIGHT ST





17

**RENDERING**

478-84 HAIGHT STREET

#2016-013012