

# **150 EUREKA STREET**

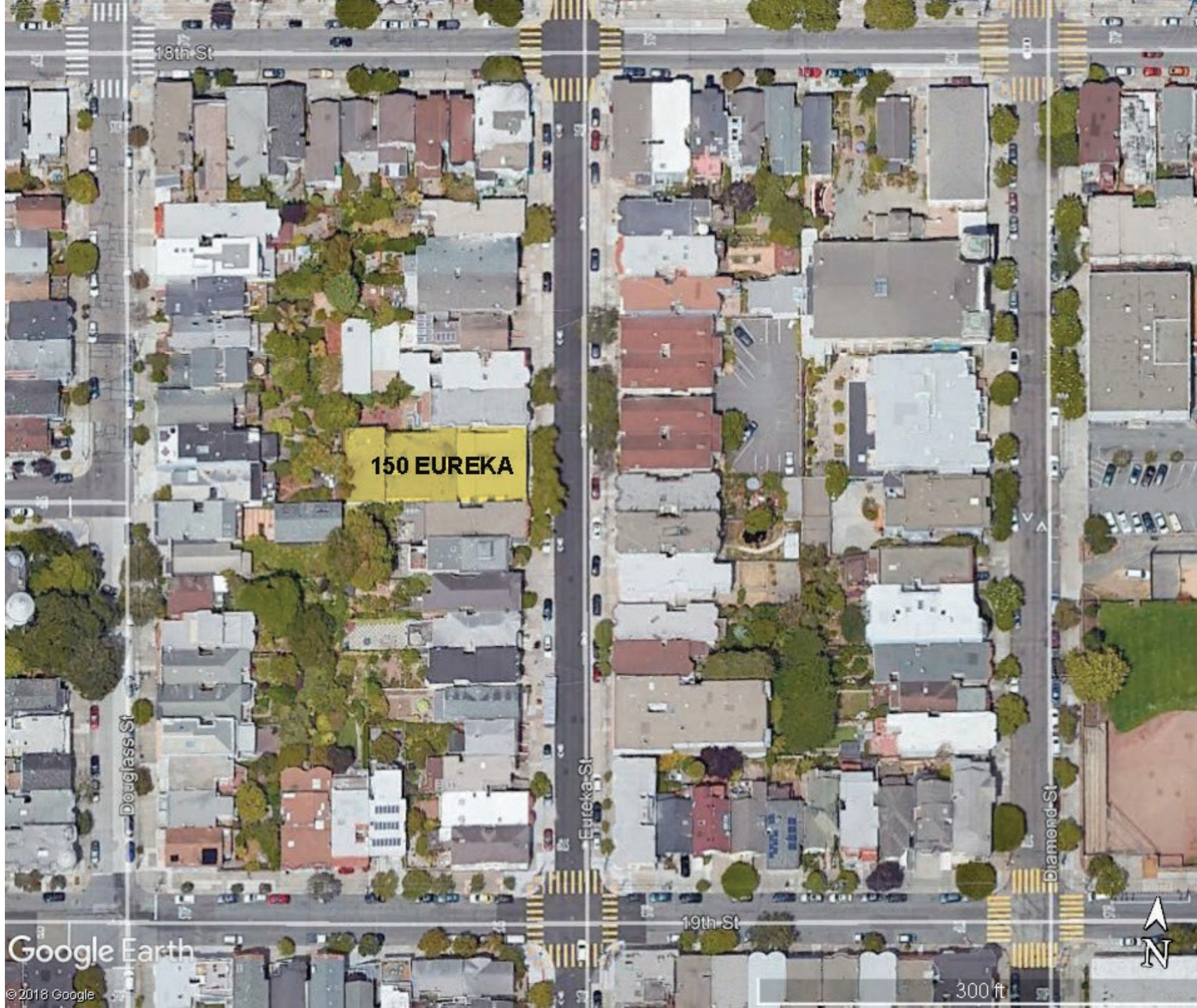
PARTIAL PRESERVATION OF EXISTING  
CHURCH STRUCTURE. FOUR NEW  
RESIDENTIAL UNITS PLUS THREE ADUs

**150 EUREKA ST.**

7/9/2019

**OPTION 1****DEMOLISH EXISTING BUILDING**  
**BUILD TWO NEW BUILDINGS****OPTION 2****PARTIAL PRESERVATION**  
**CU & NO VARIANCE****PROPOSED PROJECT**  
**OPTION 3****PARTIAL PRESERVATION**  
**CU & VARIANCE**

Building Height:	40'	40'	40'
Number of Stories:	4	4	4
Residential Units:			
1 Bedroom	0	1	0
2 Bedrooms	0	0	1
3 Bedrooms	2	3	3
4 Bedrooms	<u>2</u>	<u>0</u>	<u>0</u>
Total Units	4	4	4
Gross Square Footage:			
Residential	10,119	5,898	8,066
Garage	2,332	1,275	1,275
Common	909	2,628	2,628
Resident Storage/ADU	<u>N/A</u>	<u>1,897</u>	<u>1,897</u>
Total	13,360	11,698	13,866
Rear Yard At Grade:	2,232	1,250	757
Open Space Areas:			
Private	3,313	240	75
Common	<u>0</u>	<u>1,250</u>	<u>570</u>
Total	3,313	1,490	645
Off-Street Parking:	8	4	4



Google Earth

© 2018 Google


0
Eureka
Project
California
Y
E
A
PROJECTS, INC.
100, 88
CA 94103
415.851
1.8879
STATE
11/15/2015
FOR AN
ALL RIGHTS RESERVED. ANY
PARTY OF THE
REPRODUCED IN
WHOLE OR IN
ANY FORM OR
BY ANY MEANS
WITHOUT
PERMISSION
DATE
03.27.15
VIEW
VIEW
VIEW
VIEW
VIEW
VIEW
VIEW
VIEW
ON
ON
ON
ns
g"



150 EUREKA ST.

Looking East

Legend

 150 Eureka St

 150 Eureka St

Google Earth

© 2018 Google

100 ft





# 150 Eureka Street

A Condominiums Project  
San Francisco • California

GARY  
GEE  
AIA

GARY GEE ARCHITECTS, INC.  
98 Brady Street, #8  
San Francisco, CA 94103  
Tel 415/363-8881  
Fax 415/363-8879

EXPERIMENTAL - 100% - 100% BY GARY GEE ARCHITECTS, INC. ALL RIGHTS RESERVED. DRAWINGS AND SPECIFICATIONS, AS NOTED, ARE THE PROPERTY OF GARY GEE ARCHITECTS, INC. AND SHALL REMAIN THE PROPERTY OF GARY GEE ARCHITECTS, INC. THESE DOCUMENTS ARE NOT TO BE REPRODUCED OR TRANSMITTED IN ANY FORM OR BY ANY MEANS, ELECTRONIC OR MECHANICAL, WITHOUT THE WRITTEN PERMISSION OF GARY GEE ARCHITECTS, INC.

Project No. 15-015 Date 03.27.15

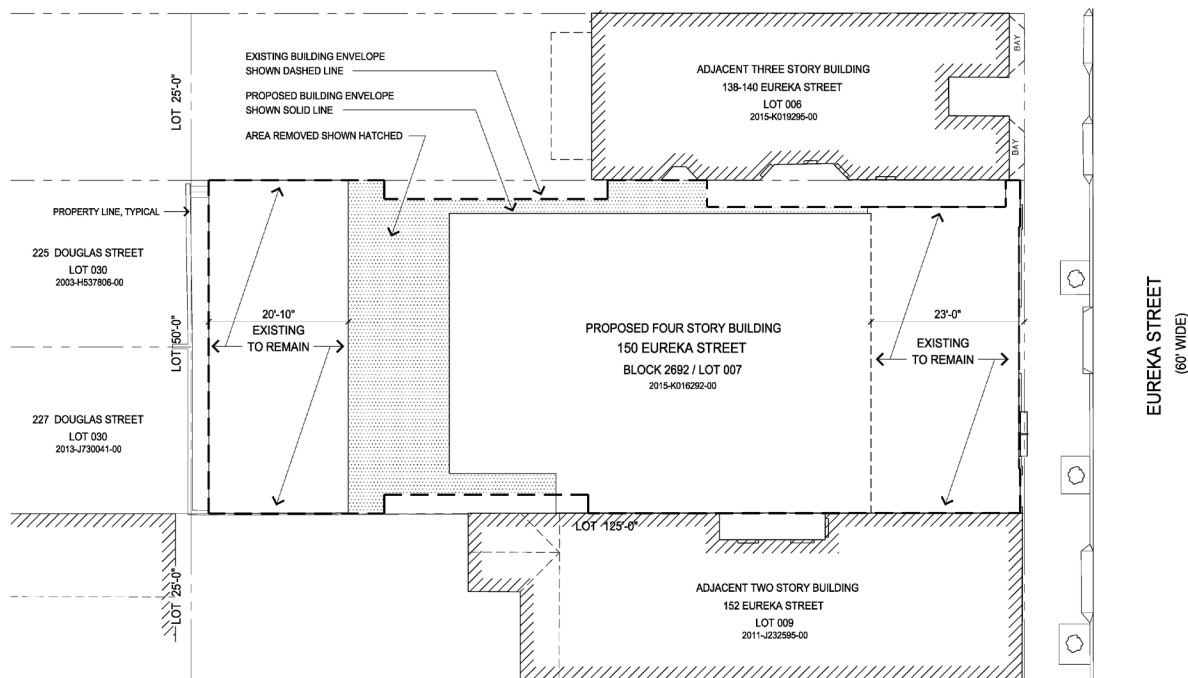
## Revisions

No.	Issue / Date
	ISSUED FOR REVIEW 11.07.15
	ISSUED FOR REVIEW 11.18.15
	ISSUED FOR REVIEW 11.26.15
	ISSUED FOR REVIEW 12.02.15
	ISSUED FOR REVIEW 12.04.15
	ISSUED FOR REVIEW 12.05.15
	ISSUED FOR REVIEW 12.12.15
	ISSUED FOR REVIEW 12.15.15
	C.U. APPLICATION 12.25.15
	C.U. APPLICATION 04.15.16
	C.U. APPLICATION 06.07.16

## Site Plan - Existing Building Coverage & Proposed Coverage

Scale: 1/8" = 1'-0"

A1.1



SITE PLAN EXISTING AND PROPOSED BUILDING COVERAGE

SCALE: 1/8" = 1'-0"



A Condominiums Project  
San Francisco • California

GARY  
GEE  
AIA

**GARY GEE ARCHITECTS, INC.**  
98 Brady Street, #8  
San Francisco, CA 94103  
Tel 415/863-8881  
Fax 415/863-8879

COPYRIGHT 1984 - 2019 BY GARY CREE  
 ARCHITECTS, INC. ALL RIGHTS RESERVED.  
 DRAWINGS AND SPECIFICATIONS, AS  
 INSTRUMENTS OF PROFESSIONAL SERVICE, ARE  
 AND SHALL REMAIN THE PROPERTY OF THE  
 ARCHITECT.  
 THESE DOCUMENTS ARE NOT TO BE USED IN  
 WHOLE OR IN PART, FOR ANY PROJECTS OR  
 PURPOSES WHATSOEVER, WITHOUT THE PRIOR  
 WRITTEN AUTHORIZATION OF GARY  
 CREE ARCHITECTS, INC.

Project No.	Date
15-015	03.27.15

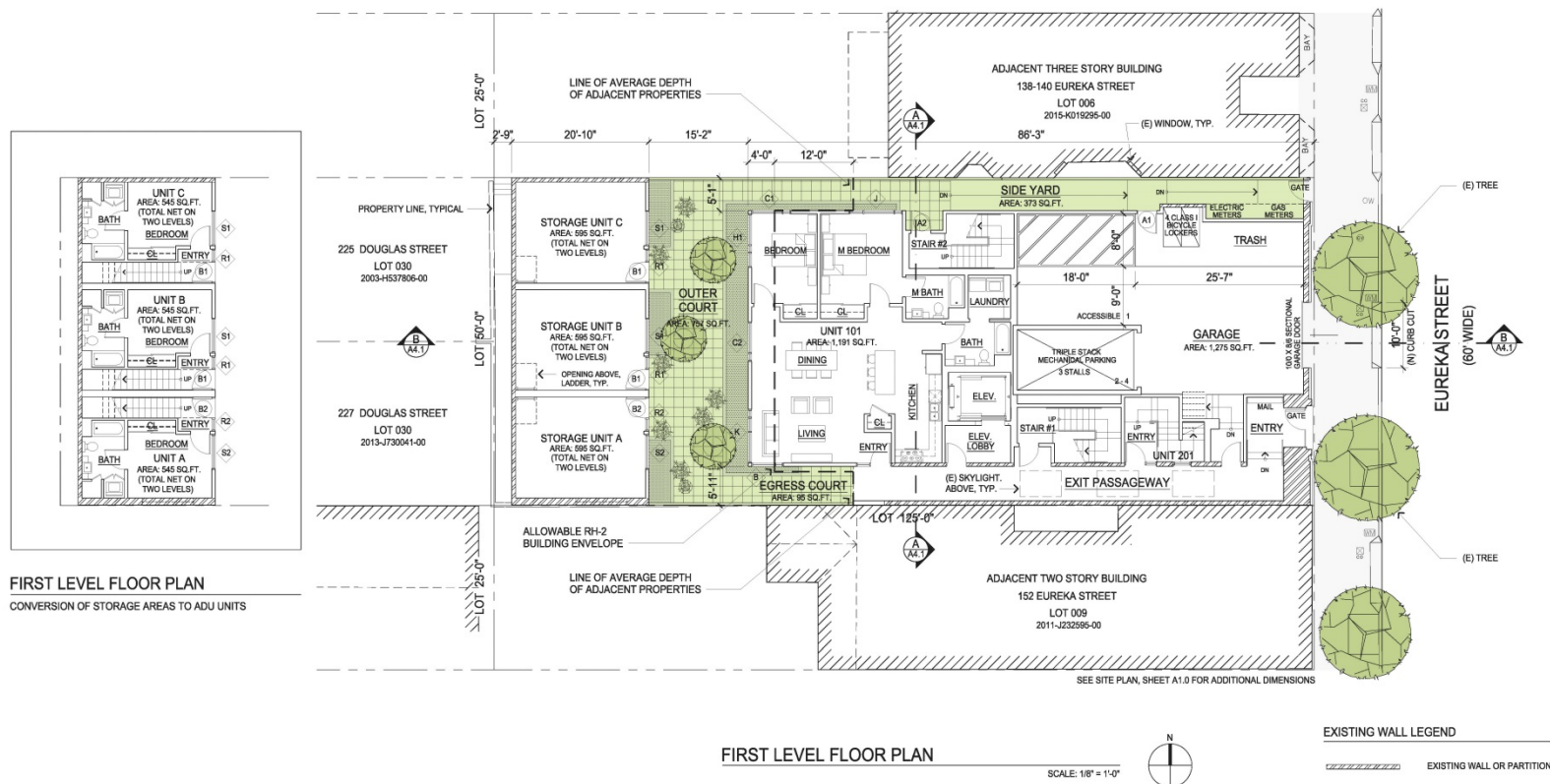
## Revisions

No.	Issue / Date
	ISSUED FOR REVIEW 11.07.18
	ISSUED FOR REVIEW 11.16.18
	ISSUED FOR REVIEW 11.29.18
	ISSUED FOR REVIEW 12.05.18
	ISSUED FOR REVIEW 12.04.18
	ISSUED FOR REVIEW 12.05.18
	ISSUED FOR REVIEW 12.12.18
	ISSUED FOR REVIEW 12.15.18
	C.U. APPLICATION 12.20.18
	C.U. APPLICATION 04.18.19
	C.U. APPLICATION 06.17.19

## Floor Plan

Scale: 1/8" = 1'-0"

## A2.1





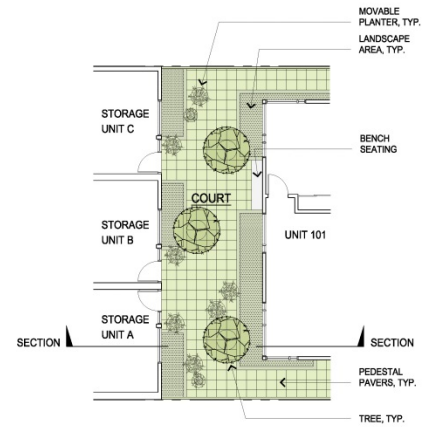
EAST COURT ELEVATION

SCALE: 1/8" = 1'-0"



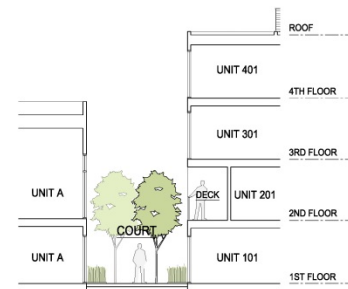
WEST COURT ELEVATION

SCALE: 1/8" = 1'-0"



COURT PLAN

SCALE: 1/8" = 1'-0"



COURT SECTION

SCALE: 1/8" = 1'-0"

# 150 Eureka Street

A Condominiums Project

San Francisco • California

GARY  
GEE  
AIA

GARY GEE ARCHITECTS, INC.  
98 Brady Street, #8  
San Francisco, CA 94103  
Tel: 415/363-8881  
Fax: 415/363-8879

COPYRIGHT 1981, 2015 BY GARY GEE ARCHITECTS, INC. ALL RIGHTS RESERVED. EXHIBITS AND SPECIFICATIONS, AS WELL AS ANY OTHER INFORMATION, AND ANY SMALL REMARKS, ARE PROPERTY OF GARY GEE ARCHITECTS, INC. THESE DOCUMENTS ARE NOT TO BE REPRODUCED, COPIED, OR TRANSMITTED IN ANY FORM OR BY ANY MEANS, ELECTRONIC OR MECHANICAL, WITHOUT THE WRITTEN PERMISSION OF GARY GEE ARCHITECTS, INC.

Project No. 15-015 Date 03.27.15

## Revisions

No.	Issue / Date
	ISSUED FOR REVIEW 11.27.15
	ISSUED FOR REVIEW 11.18.15
	ISSUED FOR REVIEW 11.26.15
	ISSUED FOR REVIEW 12.02.15
	ISSUED FOR REVIEW 12.04.15
	ISSUED FOR REVIEW 12.05.15
	ISSUED FOR REVIEW 12.12.15
	ISSUED FOR REVIEW 12.15.15
	C.U. APPLICATION 12.20.15
	C.U. APPLICATION 04.16.16
	C.U. APPLICATION 06.07.16

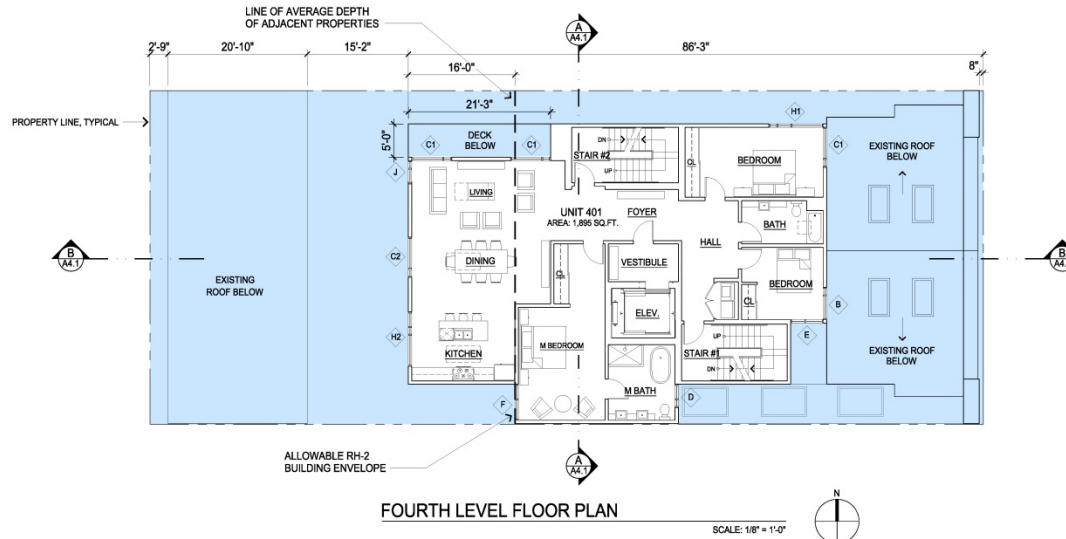
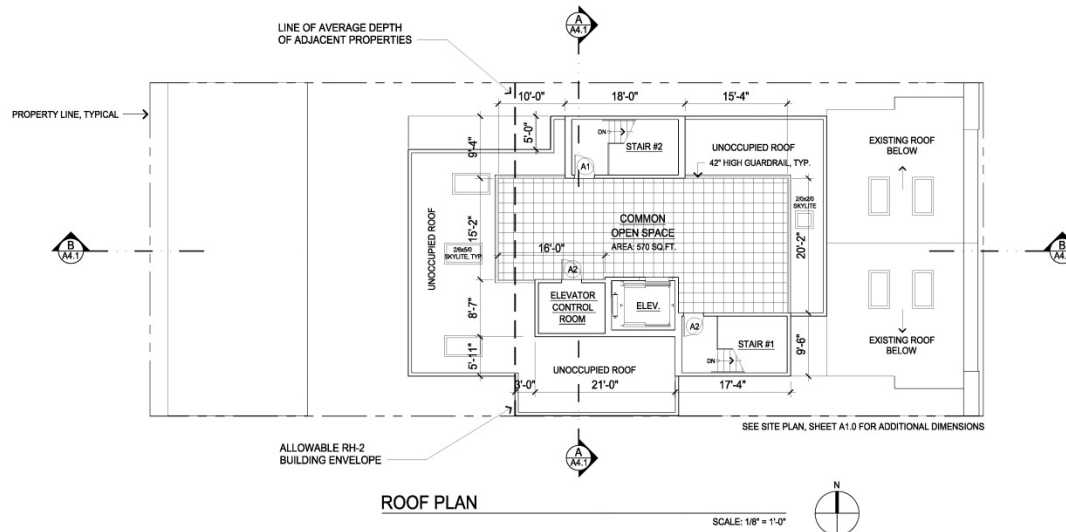
Court  
Landscape  
Concept

Scale: 1/8" = 1'-0"

L1.1







# 150 Eureka Street

A Condominiums Project

San Francisco • California

**GARY  
GEE  
ARCHITECTS**

GARY GEE ARCHITECTS, INC.  
98 Brady Street, #8  
San Francisco, CA 94103  
Tel 415/363-8881  
Fax 415/363-8879

CONCEPT, PLAN, AND SECTION BY GARY GEE ARCHITECTS, INC. ALL RIGHTS RESERVED.  
REVISIONS AND SPECIFICATIONS AS NOTED ON SET OF PERMITS, REVISED, AND AMENDMENTS. ALL DIMENSIONS TO FACE UNLESS OTHERWISE NOTED.  
THIS DOCUMENT IS NOT TO BE USED FOR ANY OTHER PROJECT WITHOUT THE WRITTEN PERMISSION OF GARY GEE ARCHITECTS, INC.

Project No. 15-015 Date 03.27.15

## Revisions

No.	Issue / Date
	ISSUED FOR REVIEW 11.27.18
	ISSUED FOR REVIEW 11.16.18
	ISSUED FOR REVIEW 11.26.18
	ISSUED FOR REVIEW 12.22.18
	ISSUED FOR REVIEW 12.24.18
	ISSUED FOR REVIEW 12.25.18
	ISSUED FOR REVIEW 12.25.18
	ISSUED FOR REVIEW 12.15.18
	C.U. APPLICATION 12.12.18
	C.U. APPLICATION 04.18.19
	C.U. APPLICATION 06.07.19

## Floor Plans

Scale: 1/8" = 1'-0"

**A2.3**

A Condominiums Project

---

San Francisco • California

**GARY GEE ARCHITECTS, INC.**  
98 Brady Street, #8  
San Francisco, CA 94103  
Tel 415/863-8881  
Fax 415/863-8879

COPYRIGHT 1964 - 2019 BY GARY GEE  
ARCHITECTS, INC. ALL RIGHTS RESERVED.

DRAWINGS AND SPECIFICATIONS, AS  
INSTRUMENTS OF PROFESSIONAL SERVICE, ARE  
AND SHALL REMAIN THE PROPERTY OF THE  
ARCHITECT.

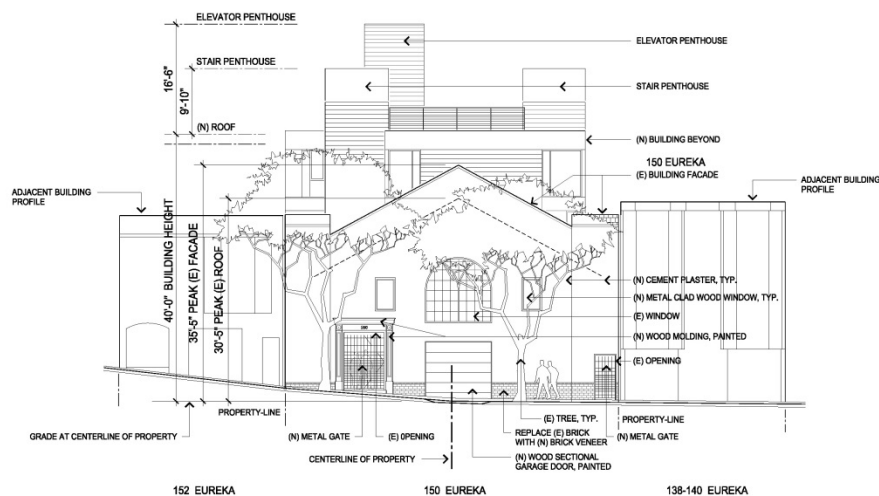
THESE DOCUMENTS ARE NOT TO BE USED IN

Project No.	Date
15-015	03.27.15

[illegible]

Scale:  $1/8" = 1'-0"$

Scale:  $1/8" = 1'-0"$



EAST ELEVATION

SCALE: 1/8" = 1'-0"



150 EUREKA STREET







# 150 Eureka Street

A Condominiums Project

San Francisco • California

**GARY  
GEE  
AIA**

GARY GEE ARCHITECTS, INC.  
98 Brady Street, #8  
San Francisco, CA 94103  
Tel 415/863-8881  
Fax 415/863-8879

COPYRIGHT 1994 - 2017 BY GARY GEE ARCHITECTS, INC. ALL RIGHTS RESERVED. ALL INFORMATION AND SPECIFICATIONS ARE NOT BEING USED FOR REPRODUCTION, AND ANY REPRODUCTION IS AT THE USER'S RISK. THESE DRAWINGS AND NOT TO BE USED IN ANY MANNER WITHOUT THE WRITTEN PERMISSION OF GARY GEE ARCHITECTS, INC.

Project No. 15-015 Date 03.27.15

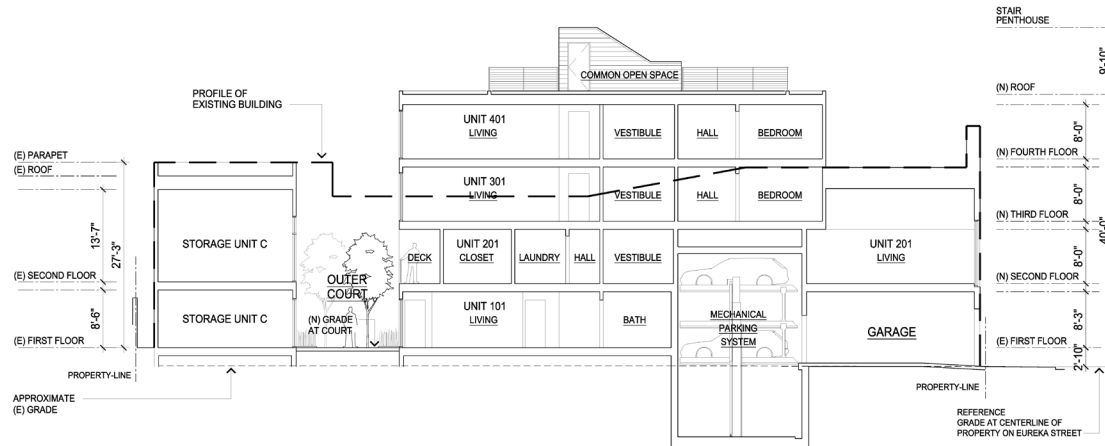
## Revisions

No.	Issue / Date
	ISSUED FOR REVIEW 11.07.18
	ISSUED FOR REVIEW 11.16.18
	ISSUED FOR REVIEW 11.26.18
	ISSUED FOR REVIEW 12.02.18
	ISSUED FOR REVIEW 12.05.18
	ISSUED FOR REVIEW 12.12.18
	ISSUED FOR REVIEW 12.15.18
	C.U. APPLICATION 12.26.18
	C.U. APPLICATION 04.18.19
	C.U. APPLICATION 06.17.19

## Section

Scale: 1/8" = 1'-0"

# A4.1.1



## SECTION - LONGITUDINAL

SCALE: 1/8" = 1'-0"

