



San Francisco
Planning

PORTSMOUTH SQUARE IMPROVEMENT PROJECT DRAFT EIR

PLANNING COMMISSION HEARING
SEPTEMBER 9, 2021

Presenter:
Megan Calpin
Senior Environmental Planner

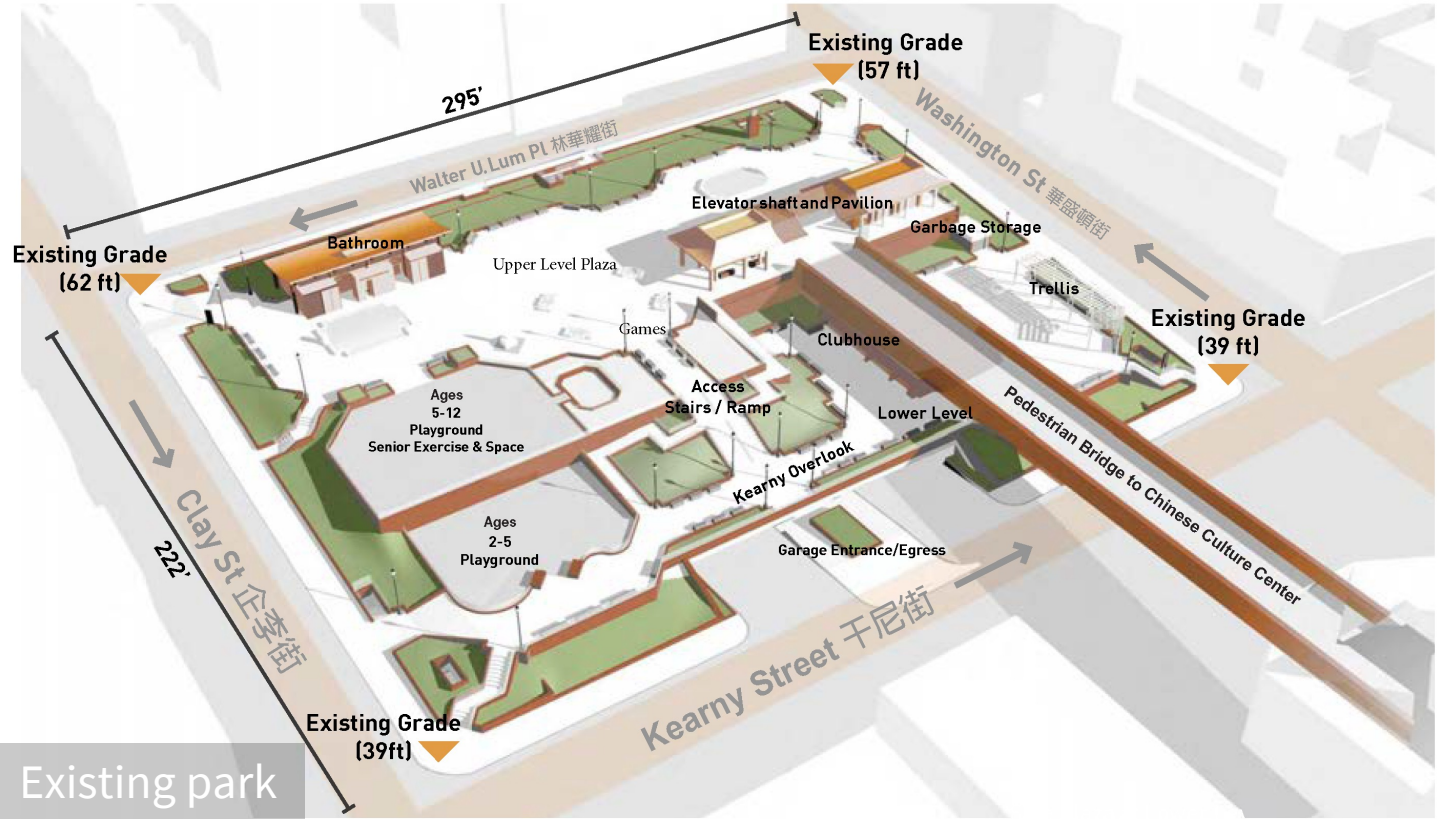


Project Site

- Chinatown and Financial District neighborhoods
- 66,000-sf public park (various) atop a parking garage (1961), including a 1,600-sf clubhouse
- 27-story hotel building (1971) and Chinese Culture Center (1973)
- Pedestrian bridge (1971)

Portsmouth Square

- 66,000-sf public park (various) atop a parking garage (1961), including a 1,600-sf clubhouse





750 Kearny Street

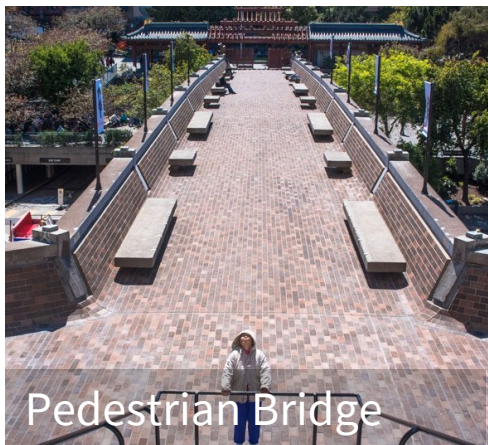


Clement Chen



750 Kearny Street & Pedestrian Bridge

- 27-story hotel building (1971) and Chinese Culture Center (1973)
- Pedestrian bridge (1971)



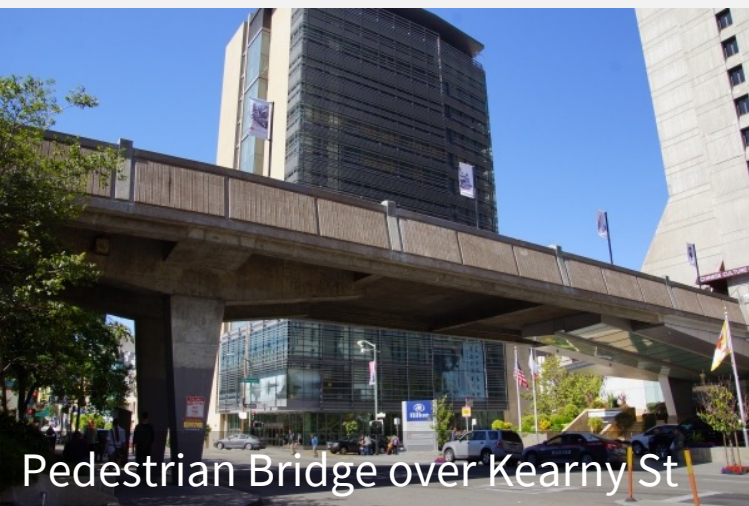
Pedestrian Bridge



Chen Chi-Kwan



Portsmouth Square (733 Kearny St)



Pedestrian Bridge over Kearny St



750 Kearny St

Individual Eligibility for California Register

Portsmouth Square

- [Criterion 1 \(events\)](#)

[750 Kearny Street](#)

- [Criterion 1 \(events\)](#)
- [Criterion 3 \(architecture\)](#)

Pedestrian Bridge

- [Criterion 1 \(events\)](#)
- [Criterion 3 \(architecture\)](#)



Proposed Project

- Renovate Portsmouth Square, including construction of new 8,300-sf clubhouse
- Demolish and remove the pedestrian bridge
- Re-waterproof Portsmouth Square Garage
- Replace curb cuts and a portion of the streets and sidewalks adjacent to Portsmouth Square

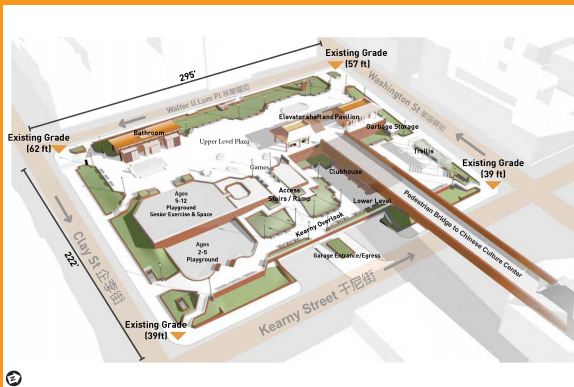
Portsmouth Square Improvement Project **Significant Impacts**

Significant and Unavoidable Impacts			
Impact	Proposed Project	Cumulative	Mitigation Measures
Historical Architectural Resources (750 Kearny Street, pedestrian bridge across Kearny Street)	Yes	No	<ul style="list-style-type: none"> • Documentation of Historical Resources • Salvage Plan • Public Interpretive Program Including Oral History
Less than Significant Impact with Mitigation			
Impact	Proposed Project	Cumulative	Mitigation Measures
Historical Architectural Resources (733 Kearny Street)	Yes	No	<ul style="list-style-type: none"> ▪ Public Interpretive Program Including Oral History ▪ Plan for Removal, Relocation, and Reinstallation of All Plaques and Monuments
Cultural Resources (Archeological Resources, Human Remains)	Yes	Yes	<ul style="list-style-type: none"> ▪ Archeological and Native American Monitoring
Tribal Cultural Resources	Yes	Yes	<ul style="list-style-type: none"> ▪ Tribal Cultural Resources Preservation Plan and Interpretive Program
Noise (Construction)	Yes	No	<ul style="list-style-type: none"> ▪ Construction Noise Control

Preservation Alternatives

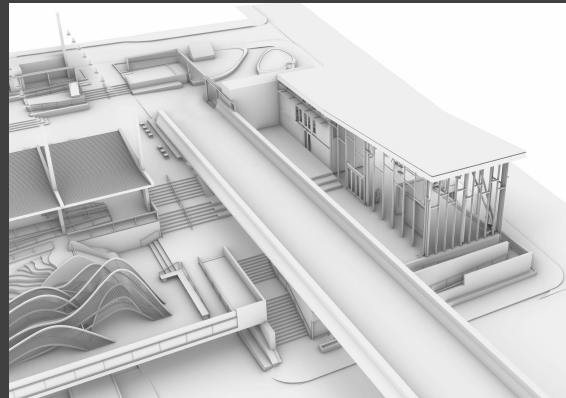
(A) No Project

- No improvements to the park or garage
- Retains Kearny Street Pedestrian Bridge
- Retains all character-defining features



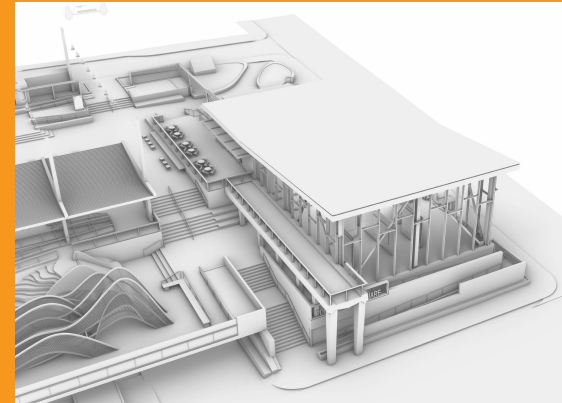
(B) Full Preservation

- Partial park renovation, including new 6,650-sf clubhouse with glazing
- Retains Kearny Street Pedestrian Bridge
- Construction of all other project features related to park renovation
- Retains all character-defining features
- Garage, sidewalk, and curb ramp repairs



(C) Partial Preservation

- Full park renovation, including new 8,300-sf clubhouse with glazing
- Removal of Kearny Street Pedestrian Bridge
- Reconstruct overlook platform
- Would not retain all character-defining features
- Garage, sidewalk, and curb ramp repairs



Historic Architectural Resources Impacts/**Mitigation Measures**

	Proposed Project	Alternative A: No Project	Alternative B: Full Preservation Alternative	Alternative C: Partial Preservation Alternative
Significance before Mitigation	SU	No Impact	SU	SU
Mitigation Measures	<ul style="list-style-type: none"> Public Interpretive Program Including Oral History Plan for Removal, Relocation, and Reinstallation of All Plaques and Monuments Documentation of Historical Resources Salvage Plan 	None Required	<ul style="list-style-type: none"> Plan for Removal, Relocation, and Reinstallation of All Plaques and Monuments 	Same as Proposed Project
Significance after Mitigation	SUM	No Impact	LSM	SUM

SU = Significant and Unavoidable

SUM = Significant and Unavoidable with Mitigation

LSM = Less than Significant with Mitigation

SEPTEMBER 20, 2021 - DRAFT EIR COMMENT PERIOD ENDS

SEND WRITTEN COMMENTS TO:

Megan Calpin

at

49 South Van Ness Ave, Suite 1400

San Francisco, CA 94103

or

CPC.PortsmouthSquareEIR@sfgov.org

THANK YOU



**San Francisco
Planning**

Megan Calpin

Senior Environmental Planner
San Francisco Planning