



ALEXANDRIA®

Building the Future of Life-Changing Innovation™

1450 Owens Street Life Science Project Office Development Authorization

San Francisco Planning Commission
November 19, 2020



PROJECT TEAM:

EXECUTIVE ARCHITECT: DGA

DESIGN ARCHITECT: IWAMOTOSCOTT ARCHITECTURE

ASSOCIATE ARCHITECT: POWELL ARCHITECTURE

LANDSCAPE ARCHITECT: BIONIC

STRUCTURAL ENGINEER: THORNTON TOMASETTI

CONSULTING S.E.: BELLO ASSOCIATES

MEP ENGINEER: ARUP

CONSULTING MEP: EDESIGNC

CIVIL ENGINEER: FREYER & LAURETA

ACOUSTIC ENGINEER: VIBRO ACOUSTIC

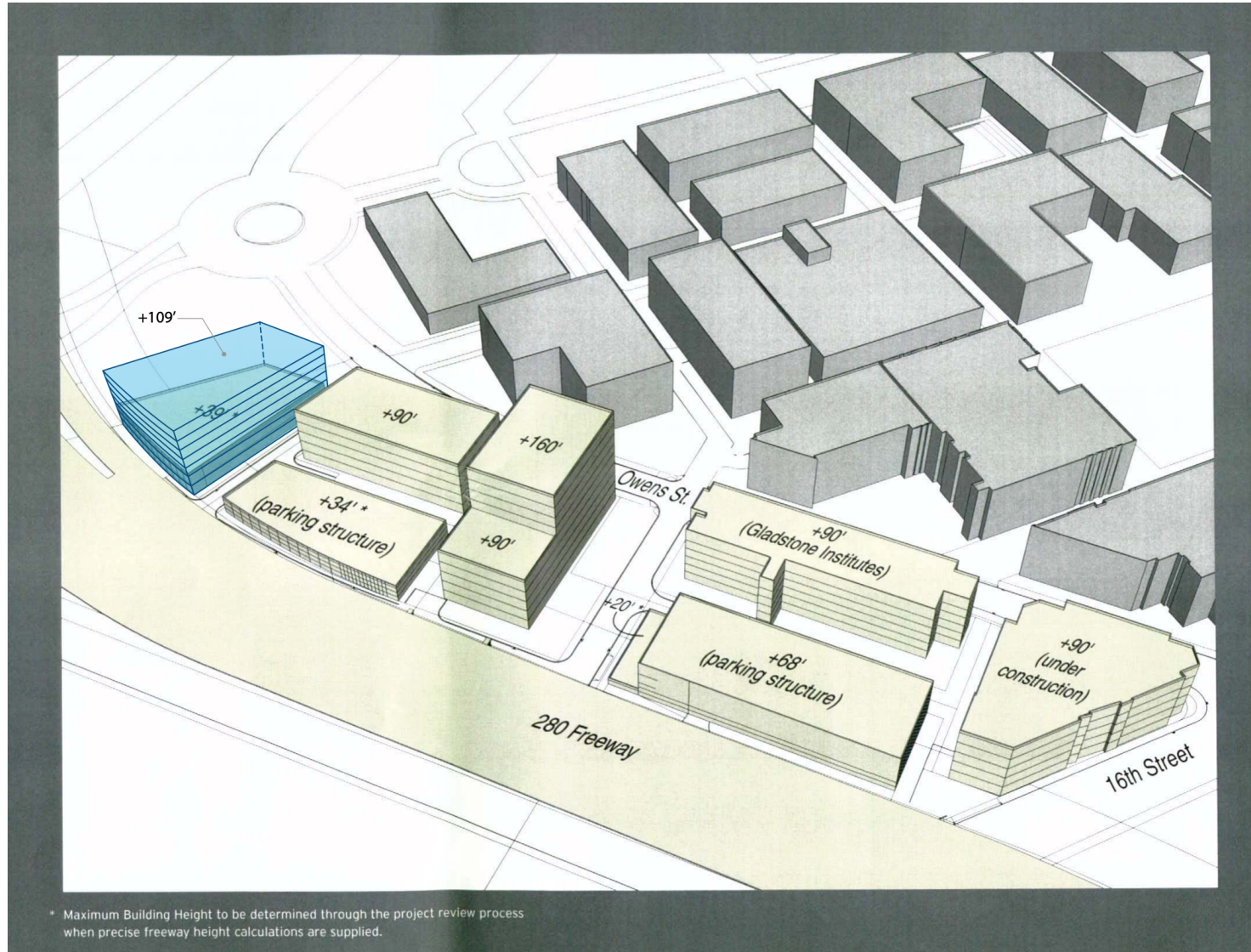
FACADE ENGINEER: ARUP

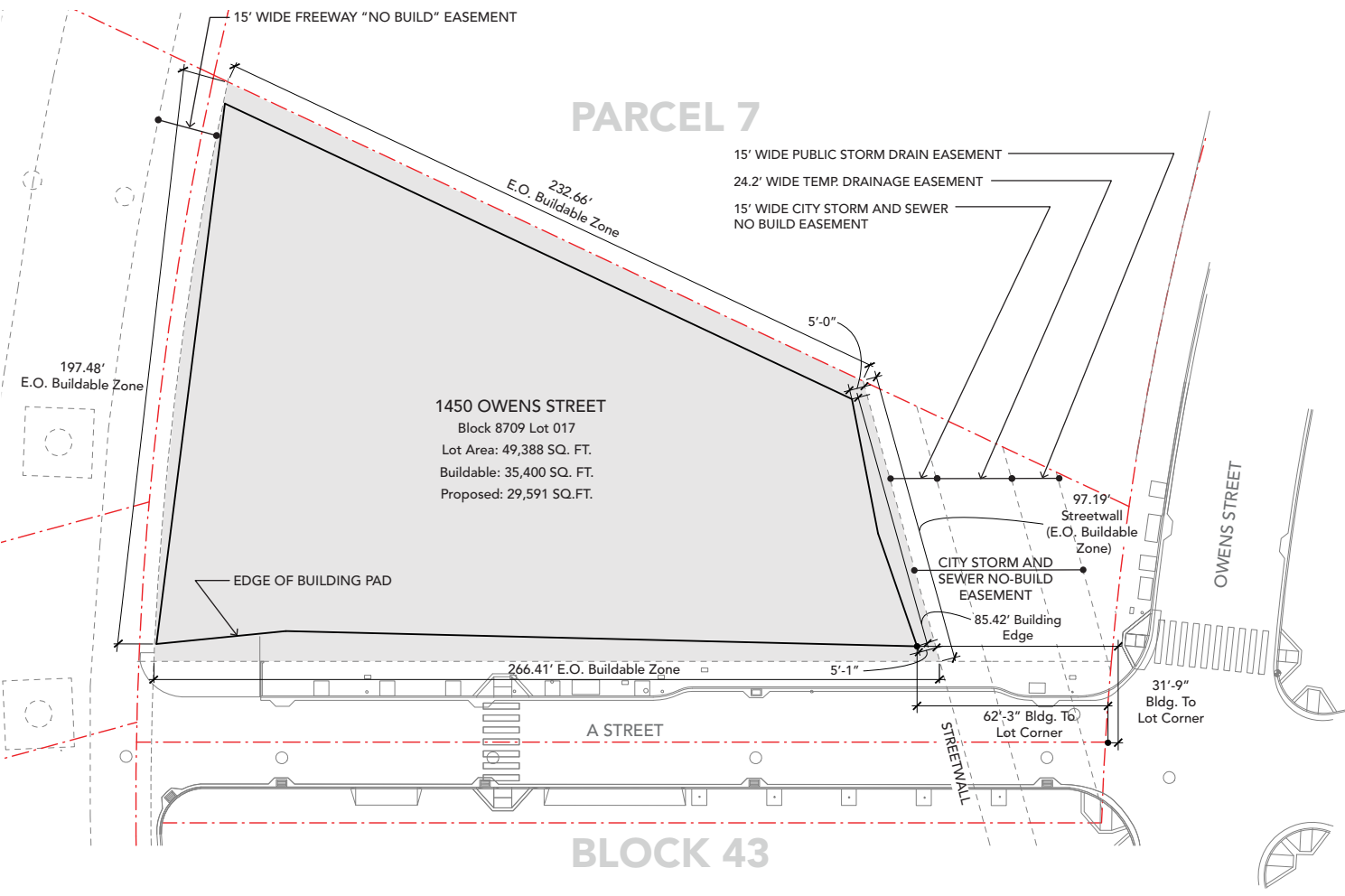
FACADE CONSULTANT: MCCLINTOCK FACADE CONSULTING

LEED / ENERGY CONSULTING: THORNTON TOMASETTI

RENDERINGS: J&C CONSULTING

with proposed Amendments to the D for D and Major Phase Application for Blocks 41-43





LEGEND

- Site Boundary ---
- Easements ---
- Buildable Zone

0' 20' 40'

NORTH



ALEXANDRIA REAL ESTATE EQUITIES, INC. | Confidential and Proprietary | Do Not Copy or Distribute | All Rights Reserved © 2020

View from the north end of Owens Street



ALEXANDRIA REAL ESTATE EQUITIES, INC. | Confidential and Proprietary | Do Not Copy or Distribute | All Rights Reserved © 2020

View looking west from Nelson Rising Lane



ALEXANDRIA REAL ESTATE EQUITIES, INC. | Confidential and Proprietary | Do Not Copy or Distribute | All Rights Reserved © 2020

Entry Plaza