

A night-time photograph of the Golden Gate Bridge in San Francisco. The bridge's towers and suspension cables are illuminated with warm lights, contrasting with the deep blue twilight sky. Light trails from traffic on the bridge create a sense of movement. In the background, the city lights of San Francisco are visible on the hills, and a prominent radio tower stands on a hill to the left. The water of the bay is dark, with some reflections of the bridge lights.

DIVISADERO EQUITY PARTNERS

CUA Discretionary Review
1649 Divisadero St.
Dec 10th 2020

KIM MITCHELL FOUNDER & CEO



Following in my father's footsteps, who founded the Bayview Hunters Point Foundation, I have spent the last 3 decades of my life in service to the community.

Throughout my career as the executive director of a local CBO, I have:

- Helped to create over 1,000 jobs
- Saved homes from bank foreclosures
- Built the first community music studio
- Co-founded SF Youth football League
- Provided one of the only safe spaces in one of SF's toughest neighborhoods
- Co-Founded one of the country's leading Social Equity Organizations, The San Francisco Equity Group

COMMUNITY LEADERSHIP & OWNERS

Owned by a group of community leaders who have dedicated their lives in service to communities across San Francisco

- + 10 SF Community & Business Leaders
- + Collectively served communities across the city as Executive Directors of non-profits for over 150 years
 - San Francisco Equity Group (SFEG)
 - Real Alternative Programs (RAP)
 - United Playaz
 - Together United Recommitted Forever (TURF)
 - Street Violence Intervention Program (SVIP)
 - Brothers Against Guns
 - Tongans Rise Up (TRU)
 - San Francisco South Pacific Islanders
- + Representing 5 of SF's most underserved neighborhoods
- + Constitutes a range of expertise including community organization, strategic advisement, and mentorship



Kim Mitchell - Sunnysdale

Served as the Executive Director for over 20 years.



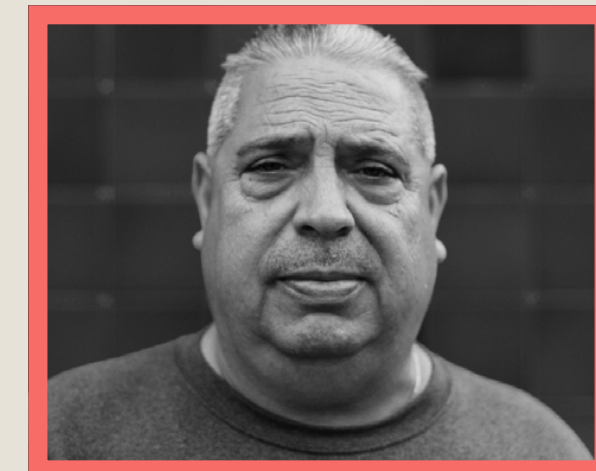
John Nauer, Jr. - Vis Valley

Lead violence prevention initiatives for over 25 years.



Rudy Corpuz, Jr. - SoMa

Founder and Executive Director of United Playaz serving the community for 25 years.



Mitchell Salazar - Mission

Community organizer and Executive Director in San Francisco for nearly 40 years.



Shelly Tatum - Western Addition

Served as a Community & business leader for over 25 years.



Shawn Richard - Western Addition

Executive Director of the Brothers Against Guns for 25 years.



Cindy De La Vega - Sunnysdale

Serving with UP as a community leader and activist for 20 years.



Omar Flenoid - Western Addition

16 years of community service at the Boys and Girls Club and SVIP



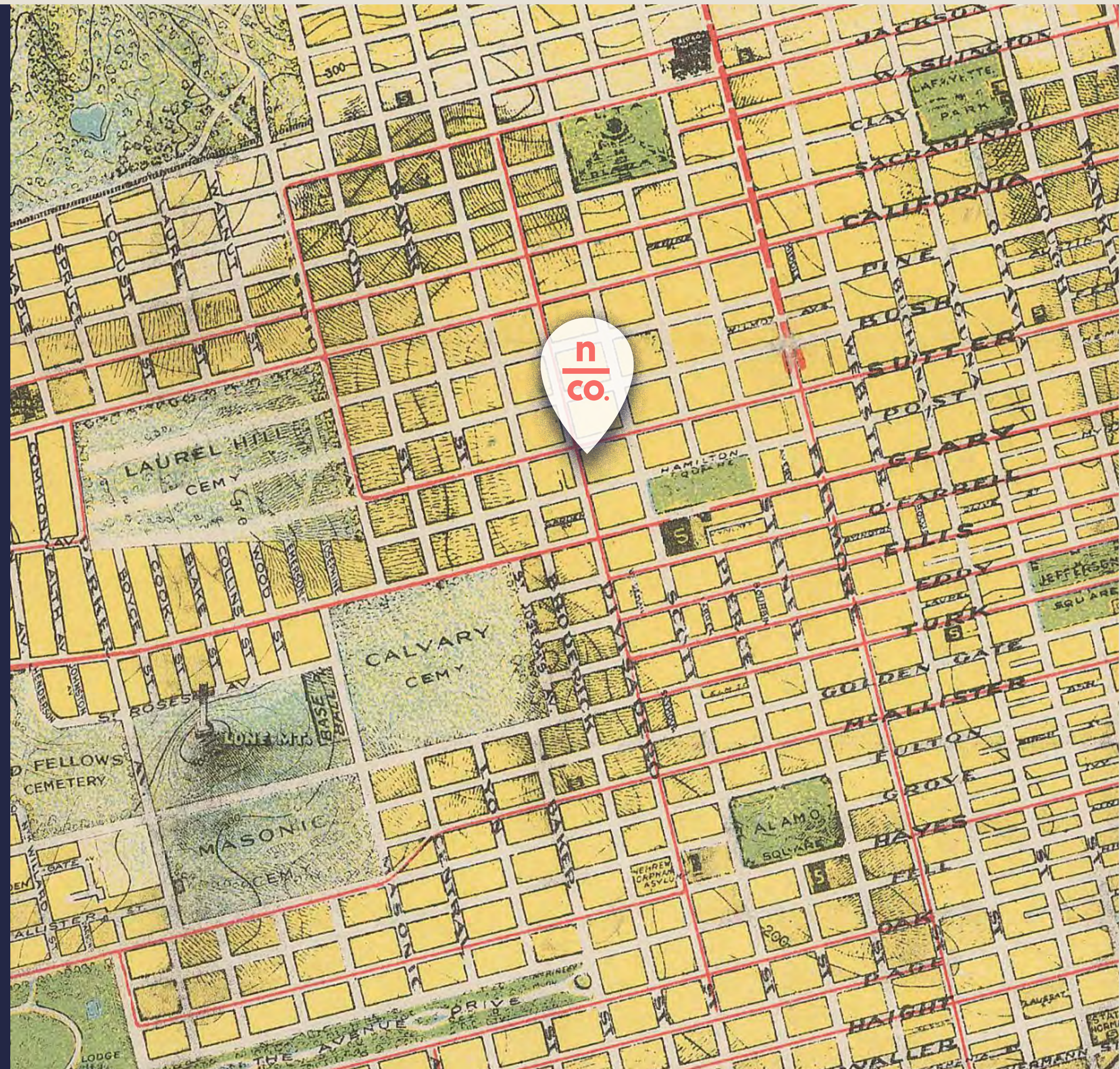
Alex Fabian - Oakland

Social equity activist and policy advisor

WE ARE A LOCAL BUSINESS

Our Owners:

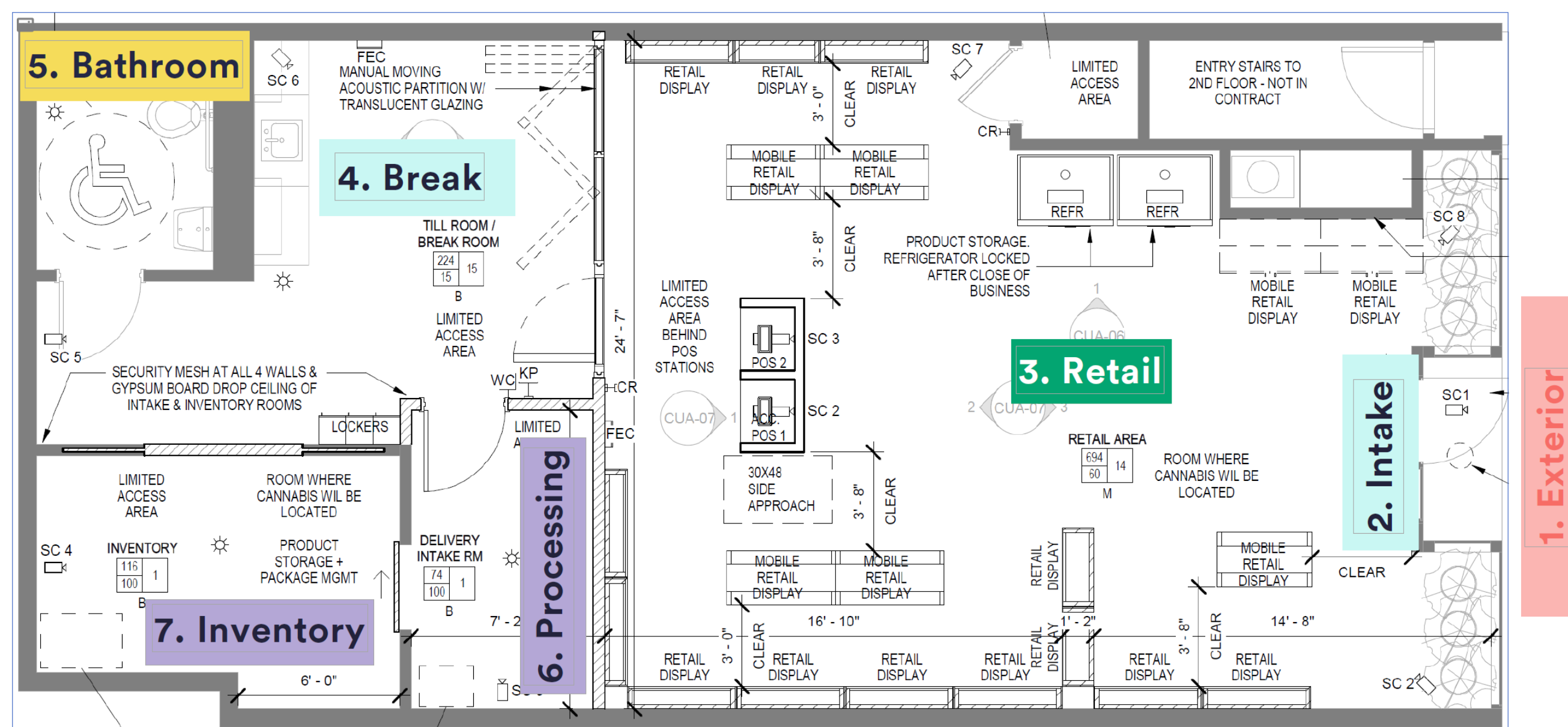
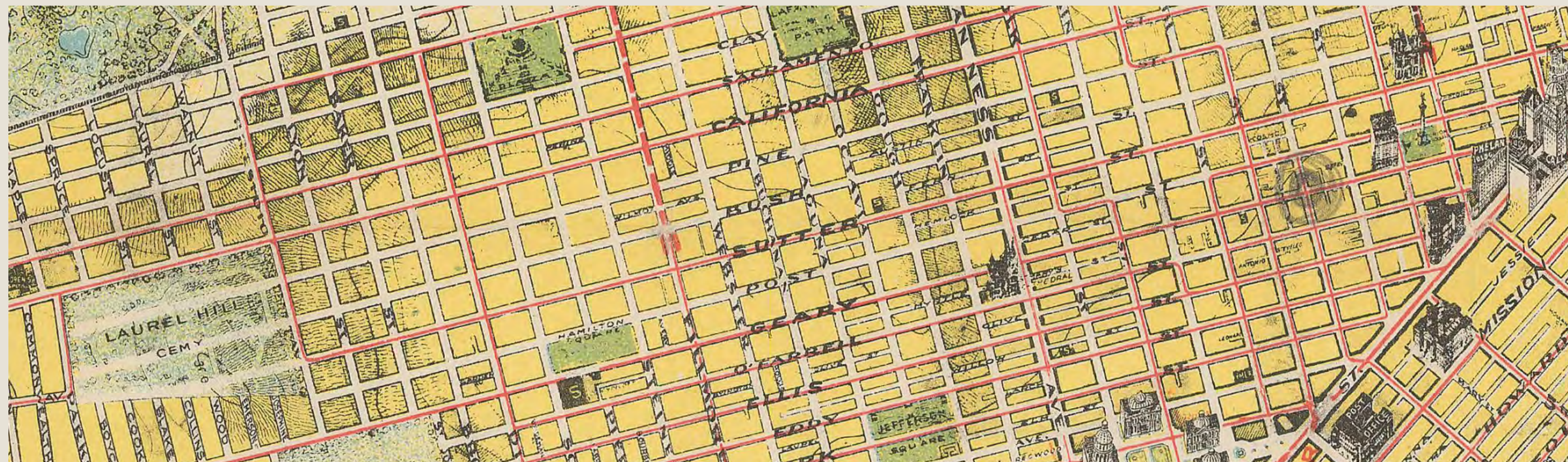
- + Have been residents of the neighborhood & district for over 50 years
- + Have participated in local businesses that have employed neighborhood youth
- + Attended neighborhood public schools
- + Are active members of the community
 - Spearheaded Annual Juneteenth Festival
 - Booths at Fillmore Jazz Fest
 - Participation in Cherry Blossom Festival / Nihonmachi St Fair
 - Led holiday toy & food giveaways



CANNABIS RETAIL

DESIGN PRINCIPLES & OPERATIONS—

1. Respect the character, culture & history of the Western Addition Community
2. Remove barriers to inclusivity
3. Safety & Security
4. Standard Operating Procedures



WE ARE COMMITTED TO THE RECOVERY OF THE CORRIDOR

- + Helping to bring life back to the neighborhood with an estimated 100-200 daily customers walking the corridor.
- + Anticipating to create up to 10-15 new jobs in the community.
 - Cannabis Consultant
 - Member Services
 - Inventory Control
 - Retail Management
 - Purchasing Manager
 - Security
- + Coordination with local businesses as they plan to reopen after Covid in a united effort to reactivate the local economy.

COMMUNITY OUTREACH

We have support from individuals & organizations across the City and beyond

- + 13 Community Organizations
- + 3 Health & Wellness Groups
- + 16 Merchants
- + 16 Local Residents

