

770 Woolsey Street Draft EIR Public Hearing

San Francisco Planning Commission
July 29, 2021
Case No. 2017-012086ENV

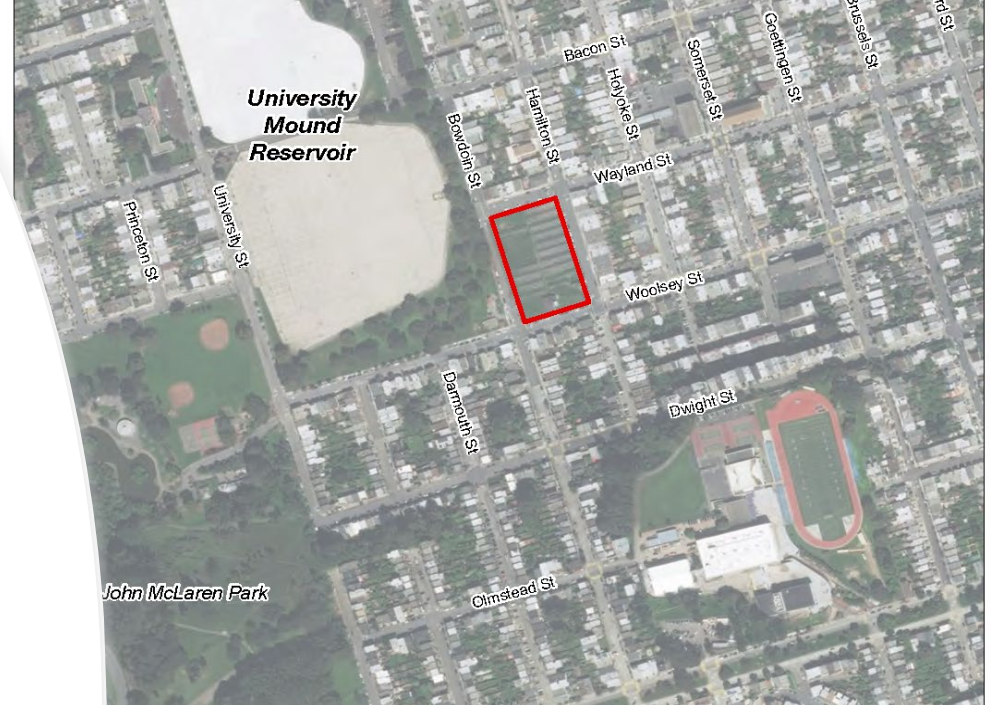


San Francisco
Planning

770 Woolsey Street

Project Location and Characteristics


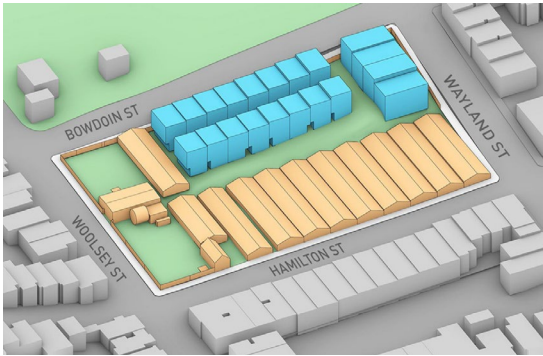
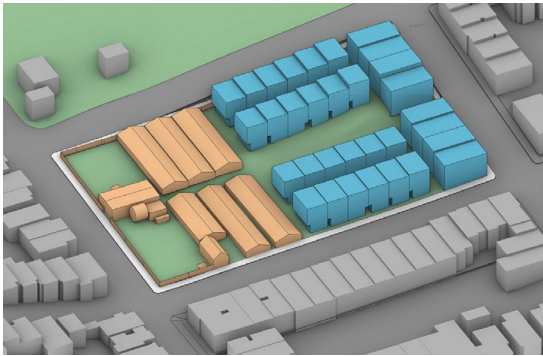
- 31 duplexes with 62 dwelling units
- 62 vehicle parking spaces
- Streetscape improvements
- 11,210 square feet of private common open space
- 17,170 square feet of publicly accessible open space with 2 rebuilt greenhouses



770 Woolsey Street Significant Impacts

| Significant and Unavoidable Impacts | | | |
|---|-----------------------|------------|---|
| Impact | Existing plus Project | Cumulative | Mitigation Measures |
| Historic Architectural Resources | Yes | No | <ul style="list-style-type: none"> Documentation of historical resources; salvage plan; interpretive program; retention of rose plants |
| Less than Significant Impact with Mitigation | | | |
| Impact | Existing plus Project | Cumulative | Mitigation Measures |
| Cultural Resources (Archeological Resources, Human Remains) | Yes | No | <ul style="list-style-type: none"> Archeological testing |
| Tribal Cultural Resources | Yes | No | <ul style="list-style-type: none"> Tribal cultural resources preservation plan and/or interpretive program |
| Noise (Operations) | Yes | No | <ul style="list-style-type: none"> Operational noise attenuation |
| Air Quality (Construction) | Yes | Yes | <ul style="list-style-type: none"> Construction emissions reduction |
| Biological Resources | Yes | No | <ul style="list-style-type: none"> Pre-construction surveys and buffer area; avoidance and minimization measures |
| Paleontological Resources | Yes | No | <ul style="list-style-type: none"> Worker awareness training and accidental discovery |

770 Woolsey Street Project Alternatives

| No Project Alternative | Full Preservation Alternative | Partial Preservation Alternative |
|---|--|--|
|  |  |  |
| <p>No changes to the project site</p> | <ul style="list-style-type: none">▪ 24 dwelling units▪ 24 vehicle parking spaces▪ 1.45 acres of publicly accessible open space▪ 11 greenhouses retained | <ul style="list-style-type: none">▪ 40 dwelling units▪ 40 vehicle parking spaces▪ 0.9 acres of publicly accessible open space▪ 6 greenhouses retained |
| Significant an Unavoidable Historic Architectural Impacts? | | |
| No | No | Yes |

Public Review Period & Responses to Comments

Public review period: June 24, 2021 to 5:00 p.m. on August 9, 2021

To request a hard copy of the Draft EIR:

- Email Jenny.Delumo@sfgov.org and include your name and mailing address
OR
- Call 628.652.7568 and leave a message with your name, mailing address, and a contact phone number or email address

To submit written comments on the Draft EIR:

- Email comments to Jenny.Delumo@sfgov.org
OR
- Mail comments to:
Jenny Delumo, EIR Coordinator
49 South Van Ness Avenue, Suite 1400
San Francisco, CA 94103

Comments will be responded to in a responses to comments document. If you are providing verbal comments today and would like to receive a copy of the responses to comments, please provide your contact information to Jenny Delumo at Jenny.Delumo@sfgov.org. Please note submitted personal contact information may be made available to the public for inspection and copying upon request.