

Received at HPC Hearing 7/16/18



Civic Design Review

## **Replacement of Public Toilets & Kiosks**

Phase I - 7.10.2018

7/21/17  
received at HPC Meeting



Replacement of Public  
Toilets & Kiosks  
Civic Design Review

Phase 1 - 7/10/2018

## Index

1.0	Introduction	4
2.1	Kiosk - Standard	6
2.2	Kiosk - Interactive Panel	10
2.3	Kiosk - Retail	14
3.1	Toilet - Single ADA	20

## 1.0 Introduction

Public Works in partnership with JCDecaux proposes the removal of the existing 25 public toilets and 114 kiosks and their replacement with new toilets and kiosks. The original agreement with JCDecaux is expiring and these efforts are part of a new enhancement program to replace the existing street furniture with up-to-date technology and a more contemporary design. The new agreement is similar in that in exchange for allowing general advertising on the kiosks, JCDecaux would cover the cost of design, fabrication, installation and daily maintenance of the street furnishings. In addition the agreement includes funds for expanding the successful staffing program as well as the fabrication of double toilets (one ADA, one not) at specific high use areas like Twin Peaks and the Port. The new agreement also allows the City to buy 15 additional toilets (for locations to be determined).

Both the public toilet and the kiosk need to fit in well within the city as a whole. There are a variety of existing locations – in neighborhoods, adjacent to parks, along busy pedestrian and transit corridors, along the street and in tourist destinations. The approach is to balance the role that each element plays within a specific setting while contributing to a city-wide vocabulary that belongs to the larger urban environment, including the contemporary designs of the new BART portals on Market Street and the new café kiosk at Civic Center Plaza. The street furnishings can serve as the framework for public communications, news and public information in addition to providing for advertising that makes the program financially viable. They can also present a robust and changing program of graphics that reinforce the identity of a neighborhood or district and highlight some of their unique features and attractions. Today, street furnishings can take advantage of the most recent and continually expanding opportunities for communications created by the latest digital and WIFI devices. They can also create entrepreneurial opportunities for incubators and artistic expression for talent seeking a public setting.

Last year Public Works and JCDecaux proposed an initial design concept to the Civic Design Review. The design program was to be understated and to recede to the background of urban life. After working closely with CDR in adjusting the design, the full SF Arts Commission approved the proposal. But, at the same time Public Works received feedback from the Historic Preservation Commission, the community and the Board of Supervisors regarding the lack of public process and a desire to create a more ambitious, forward-thinking and timeless design, one that could be an asset on the street for 10-20 years.

With that feedback, Public Works in partnership with JCDecaux initiated a streamlined invitation-only design competition among 12 diverse San Francisco-based architects and industrial designers. With the program parameters in hand, the invited teams were asked to develop proposals at a conceptual/schematic design level. The jury for the initial round consisted of City staff from Public Works, SF Arts Commission, Historic Preservation Commission, Port of San Francisco and 6 outside experts (a diverse group of San Francisco-based architects). The competition was “blind” so that entries were anonymous to the jurors, and the jurors were unknown to the entrants. The competition focused on the exterior designs, as the interior and mechanics of the structures is designed by JCDecaux.

The jury prioritized proposals that were one-of-a-kind and designed specifically for San Francisco and its vision forward. The design was not to be generic or merely utilitarian. And, by being less thematic or historicist in nature, the design would not fall back on images and identities derived from other places or from other eras.

The jury selected three finalists whose projects presented innovative and unique designs that spoke to the needs and aesthetics of our 21st century iconic city. The three designs were then shared with the Board of Supervisors, community groups, the press, and were exhibited on line, at the SF Main Library in Civic Center and the Heart of the City Farmers Market in UN Plaza. There were several articles about the finalists’ design proposals including in the SF Chronicle, SF Examiner, SF Weekly, SF Better Streets and Curbed San Francisco.



More than 200 individual responses were received through an online survey and in person, representing over 20 zip codes in San Francisco. Public Works staff, JCDecaux and community groups joined the vast majority of individual responses in choosing the SmithGroupJJR proposal as the competition winner, describing the design as “clean, safe and inviting,” “iconic and unique,” “sculptural,” “classic” and one that “wraps fluid beauty around function.”

The proposed design is forward-thinking, combining natural elements and environmental sustainability with modern technology and materials. This 21st-century street furniture reflects our San Francisco values, as we invest in a public realm designed with dignity, inclusivity and beauty. The design of the new toilets and kiosks would complement the contemporary and elegant designs of the soon-to-be completed BART portals and the café kiosk at Civic Center Plaza, and will help set a city-wide street furnishings aesthetic.

The kiosks and toilets would be curved, fairly abstract, sculptural structures: the toilet would be roughly a rounded hour-glass shape in plan, and the kiosks, a rounded triangle. In elevation, they are wider at the middle and taper towards the top and bottom. The toilet would have either a sculptural, polished concrete base or a painted cast-iron base. A glass surface would cover the advertising panels on the kiosks and seamlessly connect with the adjoining sculpted surfaces.

The quality of materials and detailing and a high level of craftsmanship will also add to the uniqueness of the streetscape furnishings. JC Decaux’s reputation and commitment to quality of engineering, design, fabrication and implementation as well as a high level of management and maintenance are touch-stones that, to a great extent, attribute to their international success.

The existing and the replacement models of the public toilet are self-cleaning, handicapped accessible and connected directly to city sewer, water and electrical lines. The proposed single toilet is approximately 9 feet wide, 14 feet long and 13 ½ feet tall, with the double toilet approximately 4 feet longer.

Both the existing and proposed models of the kiosks range from 14 to 17 feet tall, are 5 to 6 feet in diameter, and have three illuminated vertical panels approximately 12 feet tall. 69 of the existing kiosks were designed to contain newsstands. In the new contract, there will be approximately 20 multi-service kiosks that will serve micro-businesses, way-finding and neighborhood services, with approximately 94 standard advertising kiosks with some including digital panels (with the same total of 114 kiosks). All of the kiosks, current and proposed ones, have 3 panels, with one panel designated for City/public service uses and two panels for general advertising purposes. The total number of advertising panels remains the same in the proposed contract: 114 kiosks x 2 panels = 228 total panels.

In the new contract, on 70 of the new 114 kiosks, there can be up to two changeable electronic displays. All images displayed on these will be silent and sold by block/slot. Advertisers generally buy several blocks of time. Electronic light sources will represent a negligible or marginal incremental increase over existing lighted-panel sources. The kiosks will be equipped with wireless Internet connections, which will be concealed within each kiosk, will not be visible to the public, and will require no new utility connections.

### 3.1 Toilet Design - Single ADA





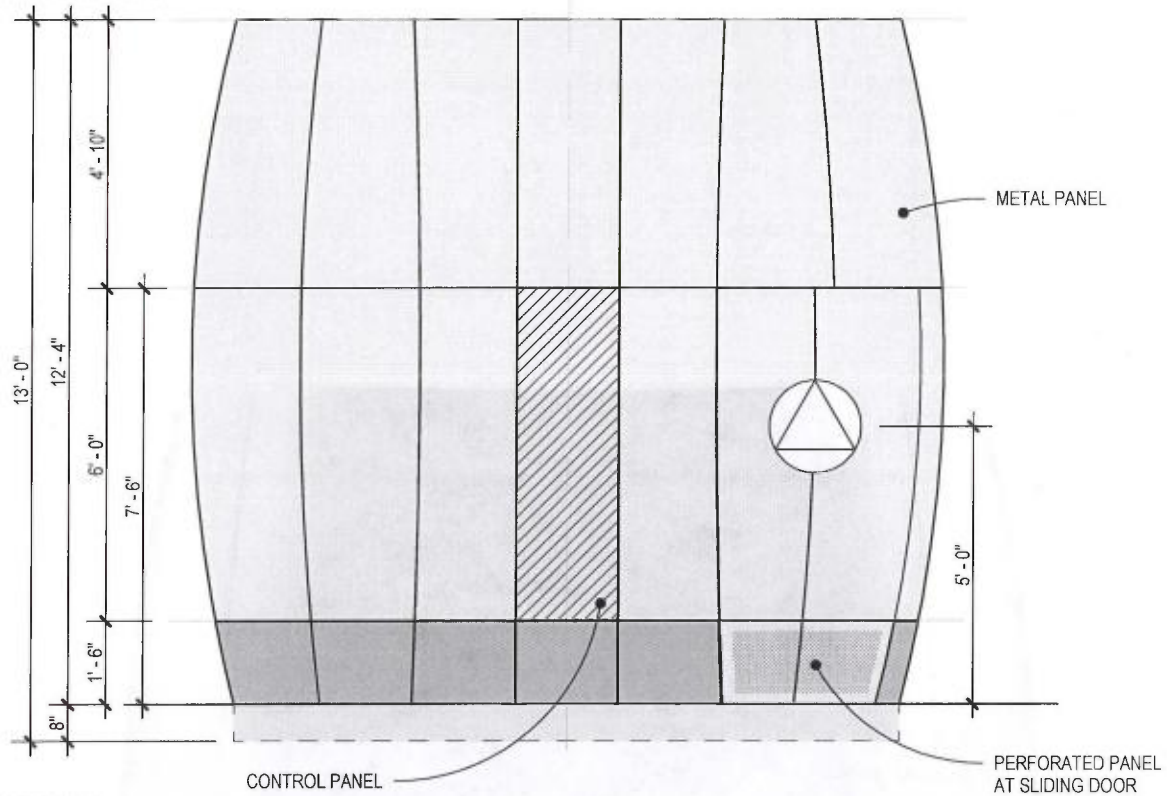
### 3.1 Toilet Design - Single ADA



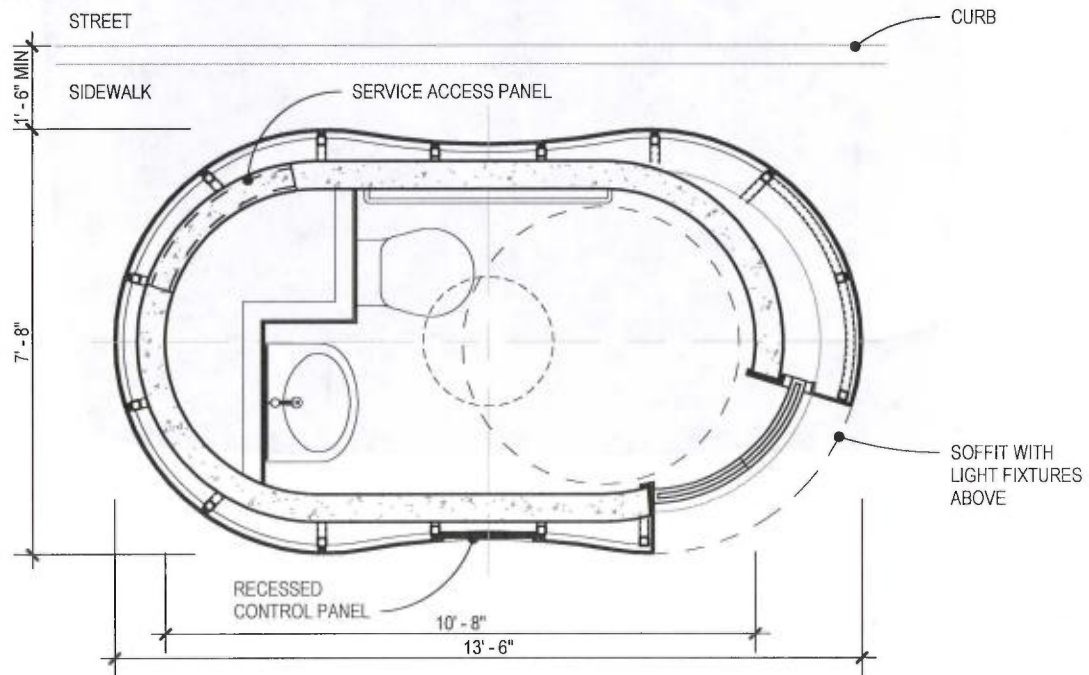




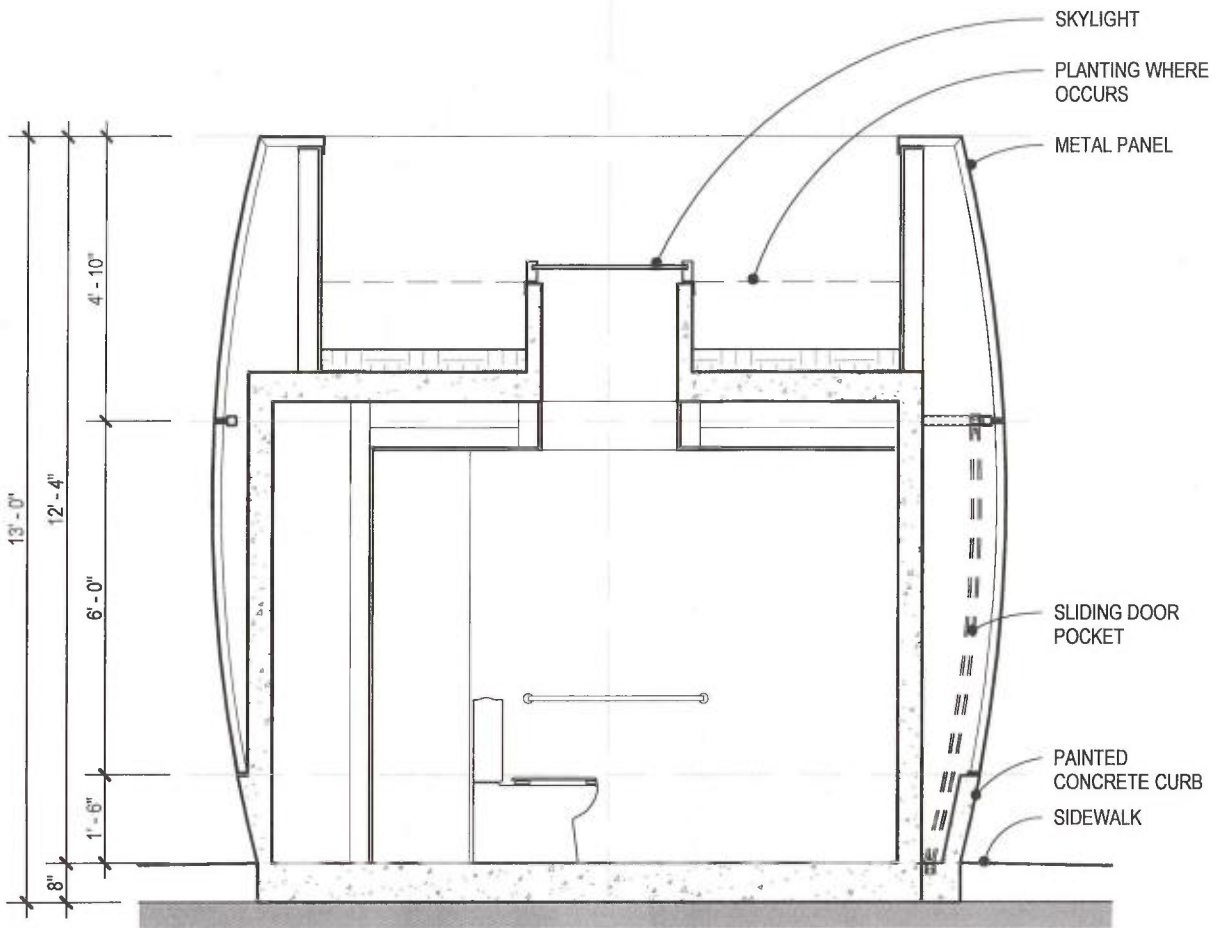
ELEVATION  
SINGLE ADA TOILET



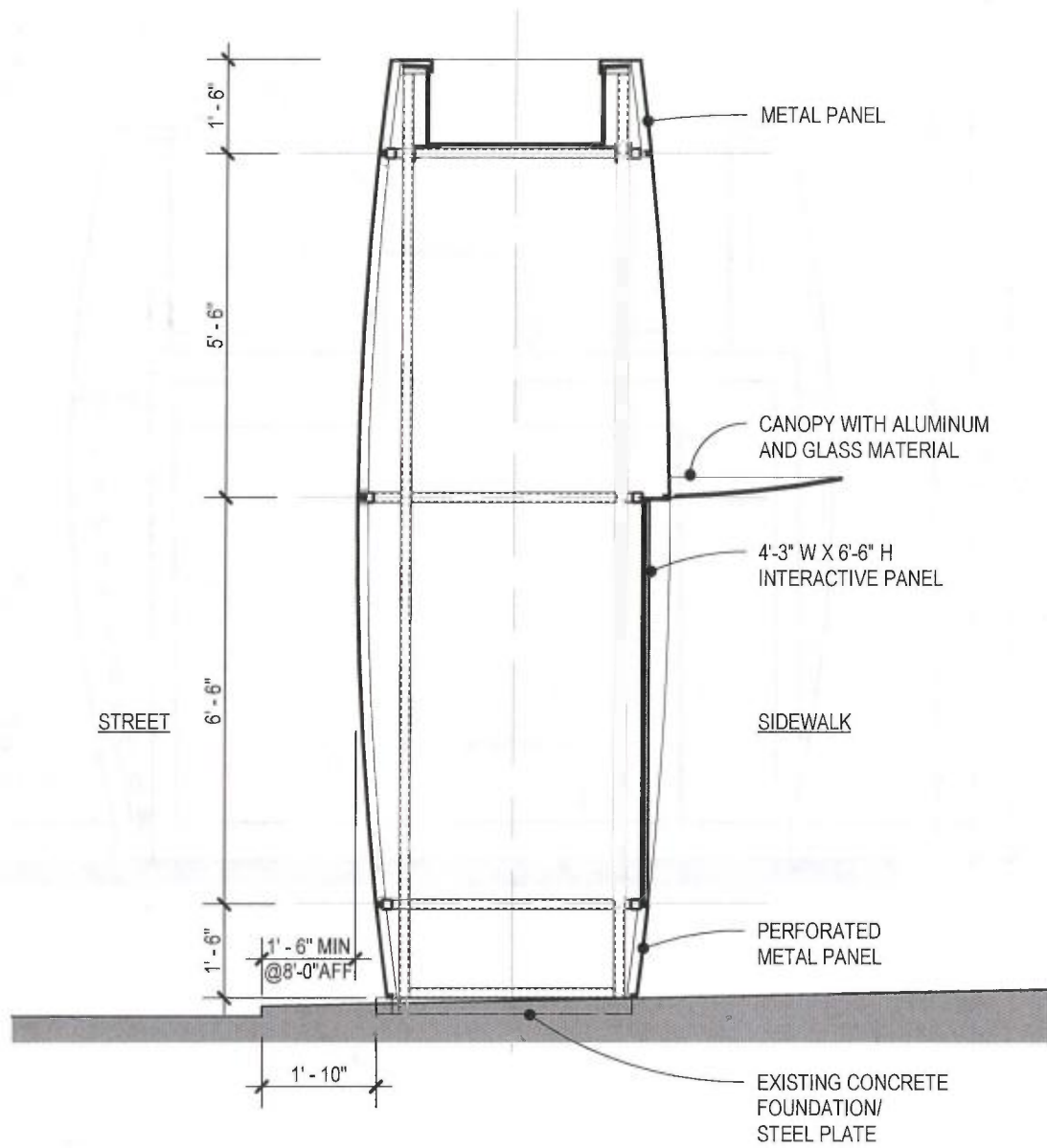
FLOOR PLAN  
SINGLE ADA TOILET



SECTION  
SINGLE ADA TOILET



SECTION  
KIOSK - INTERACTIVE PANEL

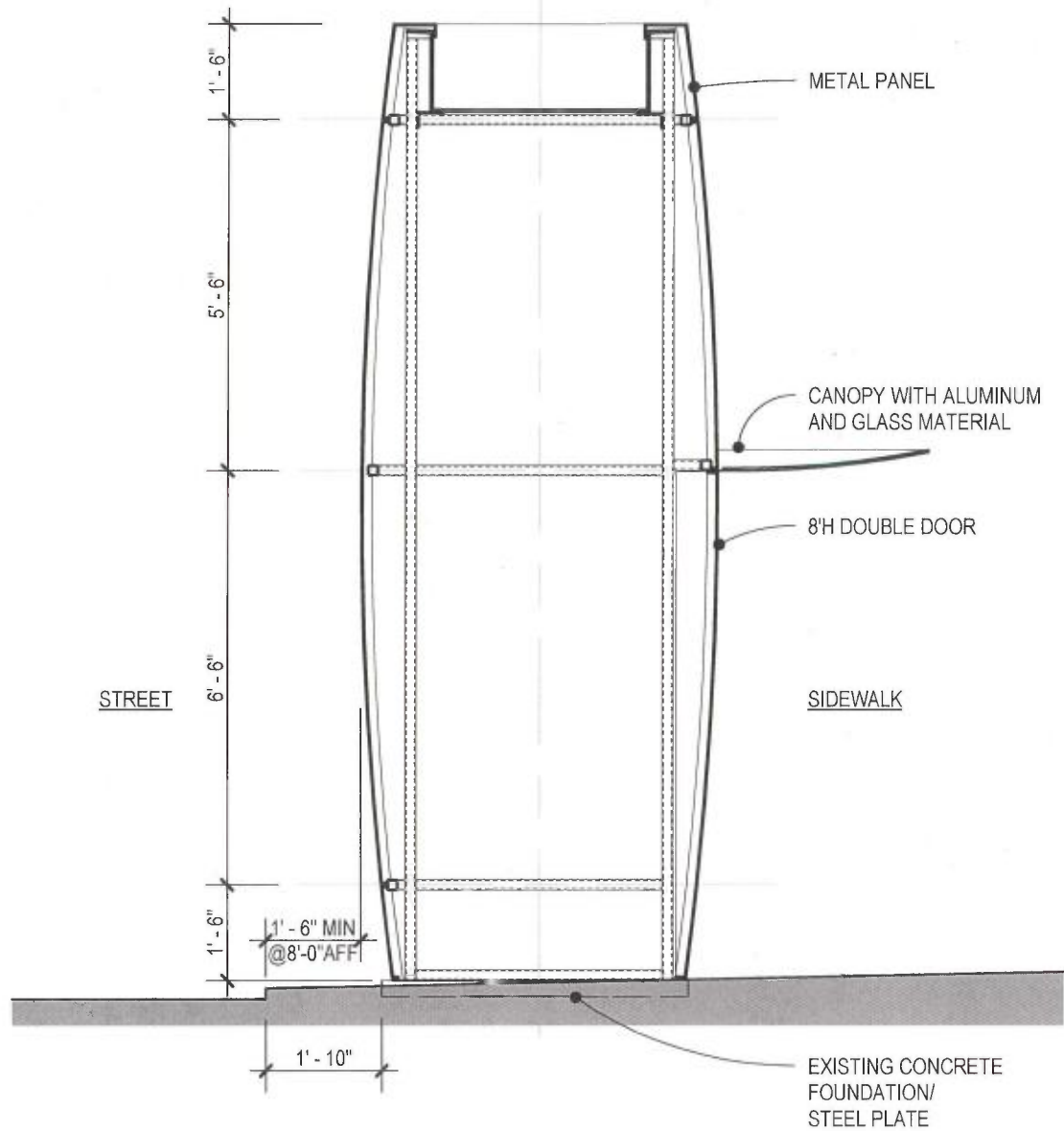


Kiosks dimensions and shape are being engineered and will change

Kiosks renderings will be provided later



SECTION  
KIOSK - RETAIL







# SAN FRANCISCO'S AmeniTREEs



SMITHGROUPJJR



## CRITICAL QUESTIONS:

- *How can we create objects that maintain a cohesive singular concept while changing and adapting to the varied San Francisco neighborhoods?*

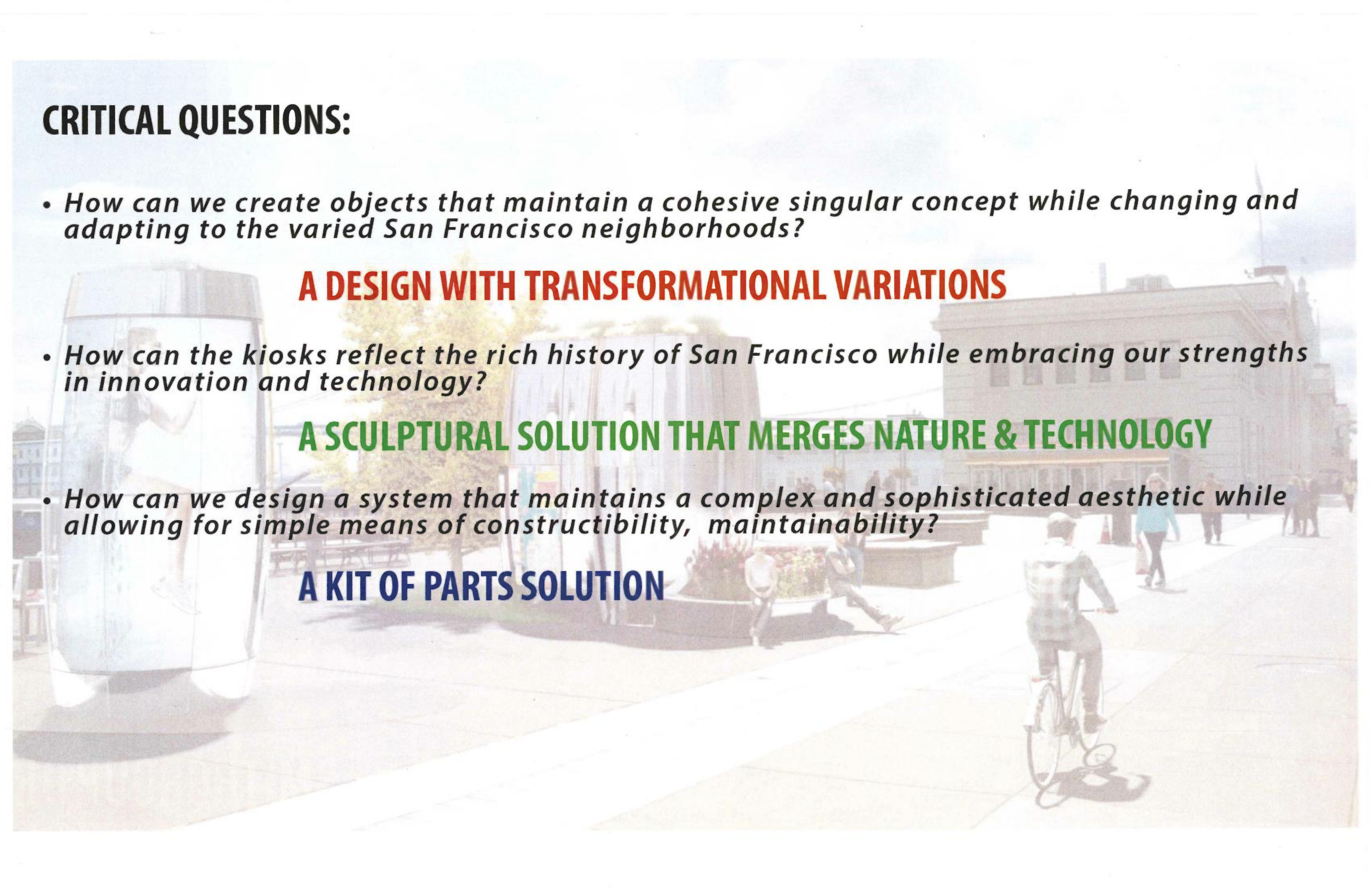
### A DESIGN WITH TRANSFORMATIONAL VARIATIONS

- *How can the kiosks reflect the rich history of San Francisco while embracing our strengths in innovation and technology?*

### A SCULPTURAL SOLUTION THAT MERGES NATURE & TECHNOLOGY

- *How can we design a system that maintains a complex and sophisticated aesthetic while allowing for simple means of constructibility, maintainability?*

### A KIT OF PARTS SOLUTION













# SAN FRANCISCO'S AmeniTREES

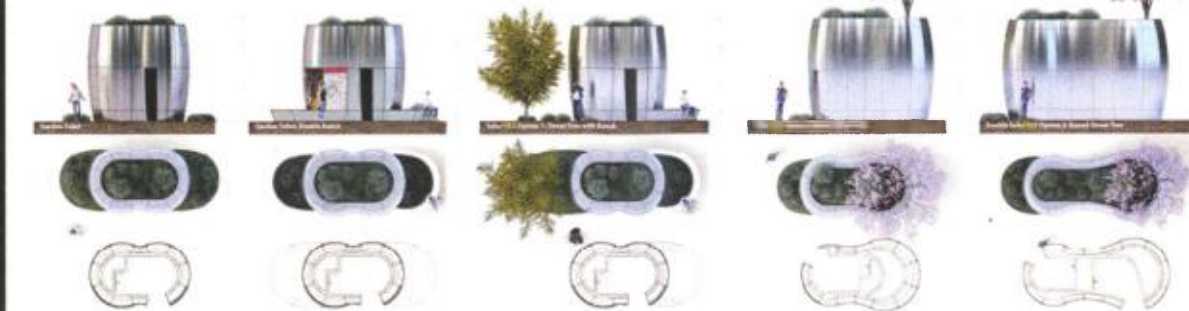


## Legend

- Tree system add-on
- Soil
- Drainage pan
- Iron & concrete bench add-on
- Vertical filter screen mesh
- Storage tank & pump
- Gray water system
- Hot formaldehyde panel skin
- Hiding back cover door
- Tube steel structure
- Inner concrete shell
- Digital screen

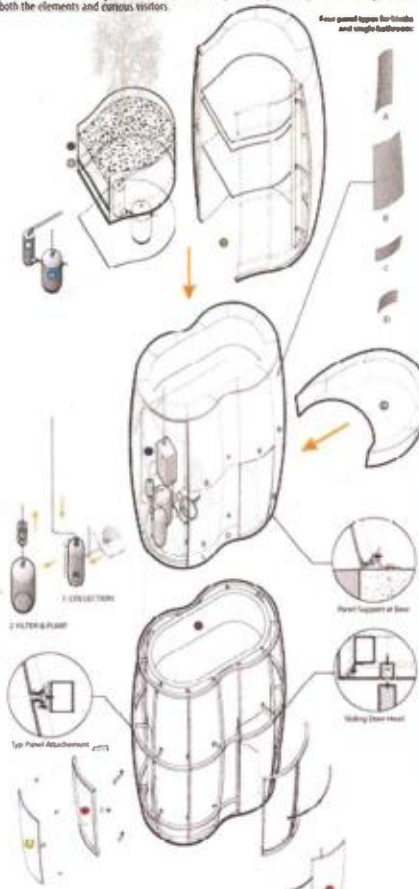
## A Water Story

The pavilion design tells a story of sustainability and conservation, an intentional narrative that is very much of San Francisco. The many variations of the pavilion design creates an opportunity for water collection, treatment and reuse. The blocks can be engineered to collect rainwater, when it rains, and runoff to wash the units, water the vegetation or flush toilets. The blocks tell the water story through featured native and low-maintenance vegetation familiar to San Francisco's micro-climates, reducing maintenance of the green roofs and trees. Each of these features work together to minimize reliance on the city's potable water – an important feature for water-conscious San Franciscans.



## Simplicity in its Kit of Parts

The AmeniTREES are designed as a kit of parts for ease in buildability and maintenance. The pavilions' unique sculptural shape displays a sense of complexity, yet, the kit of parts assembly is simple having been composed of repeated and related panels. This concept limits the number of exterior panel variations providing cost saving opportunities. In addition, the advertising blocks' inner shell is a flat base with a bent surface for static or digital advertising. The exterior shell for the structure consists of a glass and metal skin to give the iconic pavilion shape while protecting the technology within from both the elements and curious visitors.



## SMITHGROUP JJR

Variations for a City of Unique Neighborhoods

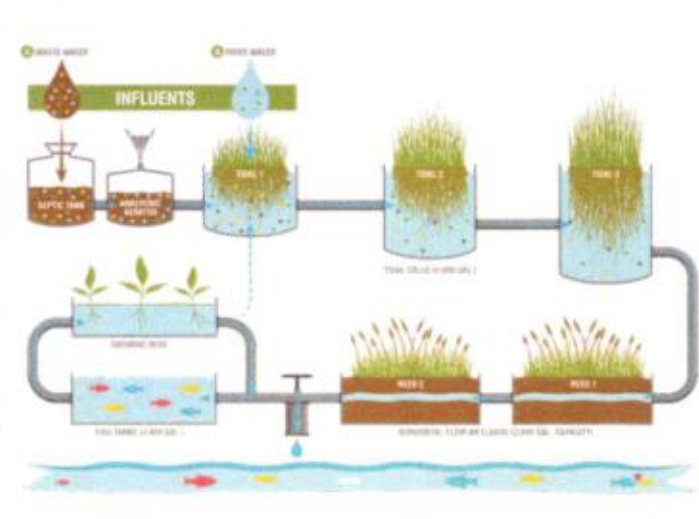
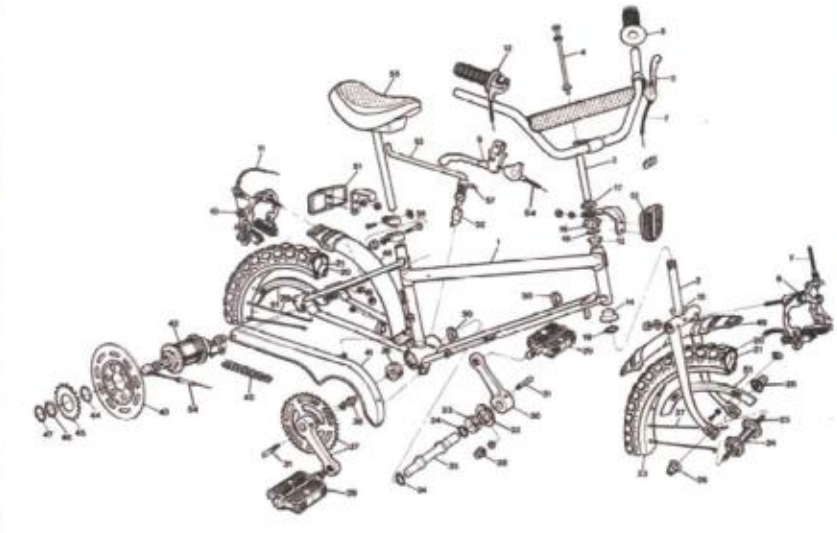
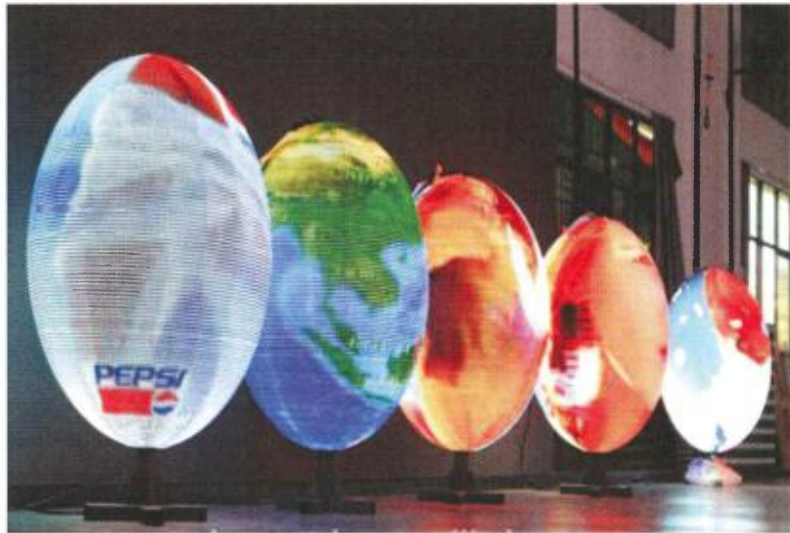
New structures are iconic in their design and adaptability – transforming to varied site needs. The AmeniTREES design provides a set of options allowing for the structures to physically adjust to climate and contextual conditions of San Francisco. The AmeniTREES forms come in four transformational variations: a simple single or double unit bathroom pavilion, double bench pavilion, street level tree with bench pavilion and cained tree-topped pavilion. The retail kiosks, when open, reveal vibrant colored interiors adapting to specific context, as well. Developing these design alternatives, along with the incorporation of native grasses and trees, allow for a cohesive collection of pavilions that are as varied as San Francisco's neighborhoods.







# INSPIRATION

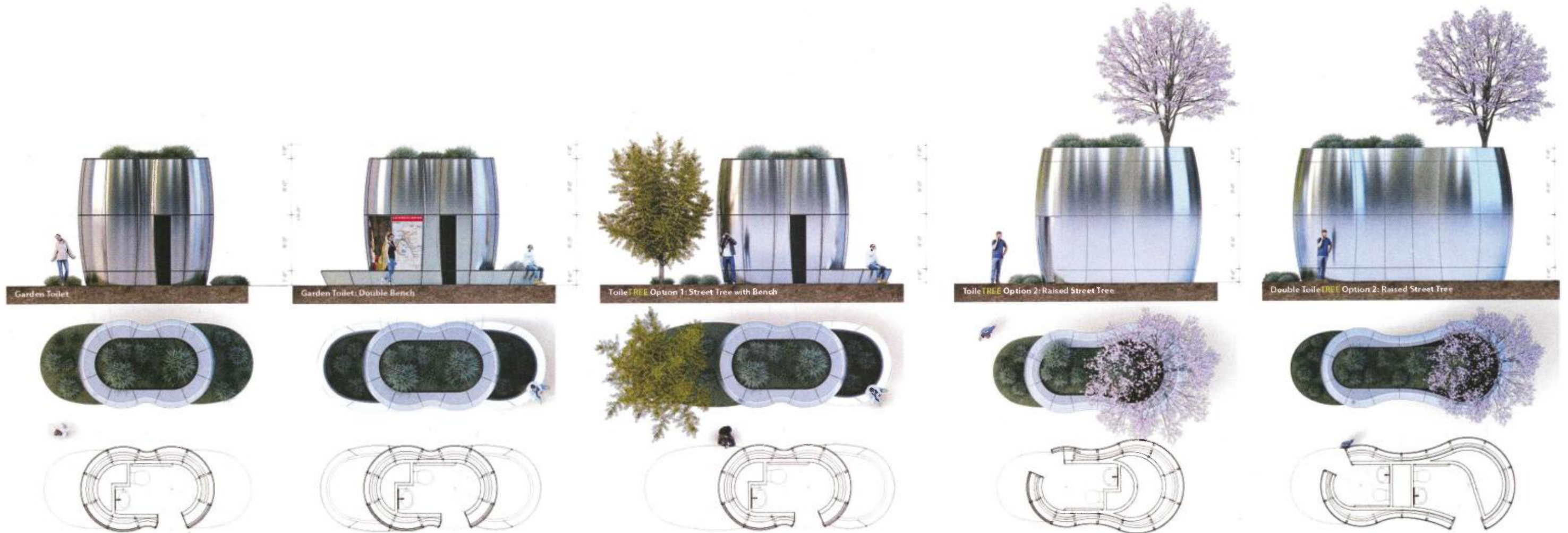




## Variations for a City of Unique Neighborhoods

New structures are iconic in their design and adaptability – transforming to varied site needs. The Ameni**TREES** design provides a set of options allowing for the structures to physically adjust to climate and contextual conditions of San Francisco. The Toile**TREES** forms come in four transformational variations: a simple single or double unit bathroom pavilion, double bench pavilion, street level tree with bench pavilion and raised tree-topped pavilion. The retail kiosk, when open, reveals vibrant colored interiors adapting to specific context, as well. Developing these design alternatives, along with the incorporation of varied native grasses and trees, allow for a cohesive collection of pavilions that are as varied as San Francisco's neighborhoods.

CLIMATE • CULTURE • CONTEXT • VEGETATION • DEMOGRAPHICS • FUNCTION • COST • VIEWS • DIVERSITY

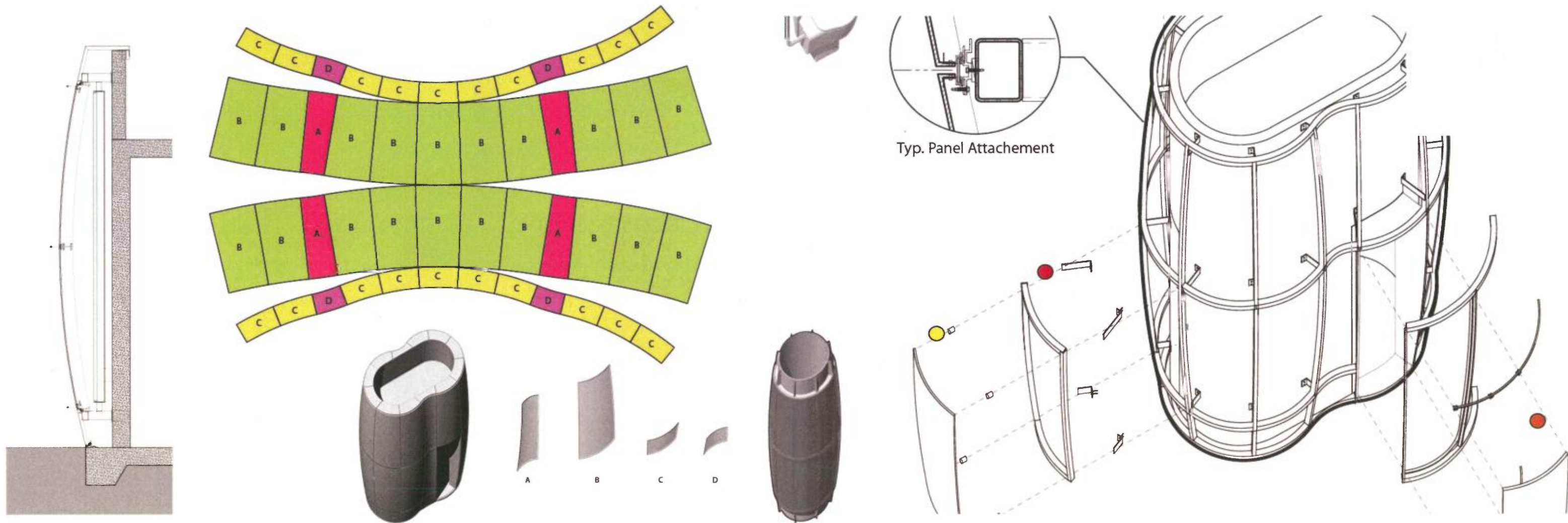




## Simplicity in its Kit of Parts

The AmeniTREES are designed as a kit of parts for ease in buildability and maintenance. The pavilions' unique sculptural shape displays a sense of complexity, yet, the kit of parts assembly is simple having been composed of repeated and rotated panels. This concept limits the number of exterior panel variations providing cost saving opportunities. In addition, the advertising kiosks inner shell is a flat base with a bent surface for static or digital advertising. The exterior shell for the structure consists of a glass and metal skin to give the iconic pavilion shape while protecting the technology within from both the elements and curious visitors.

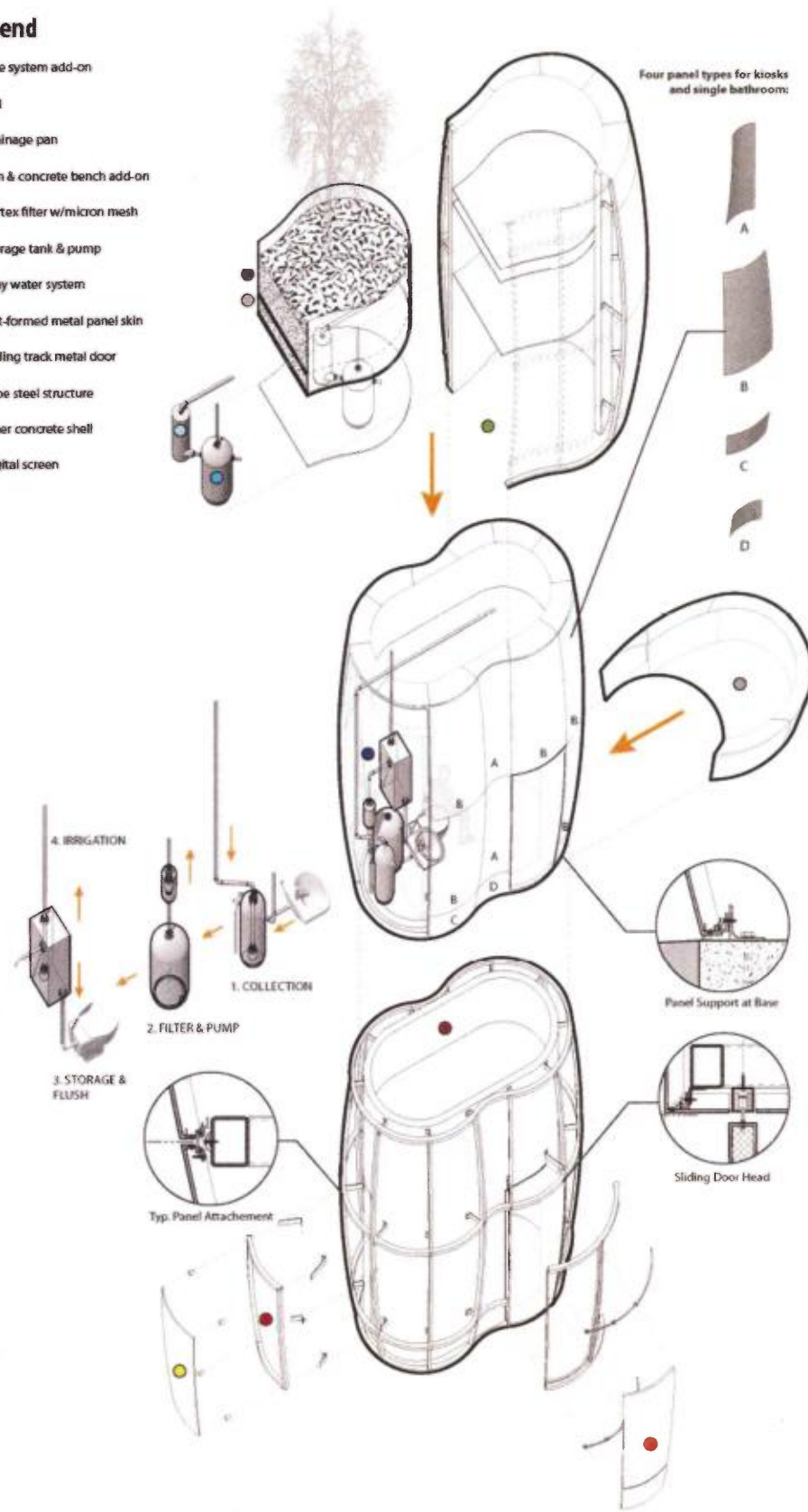
**MAINTAIN • BUILD • COST • CLEAN • REPLACE • UPGRADE • MANUFACTURE • PARTS • LASTING • DURABLE**





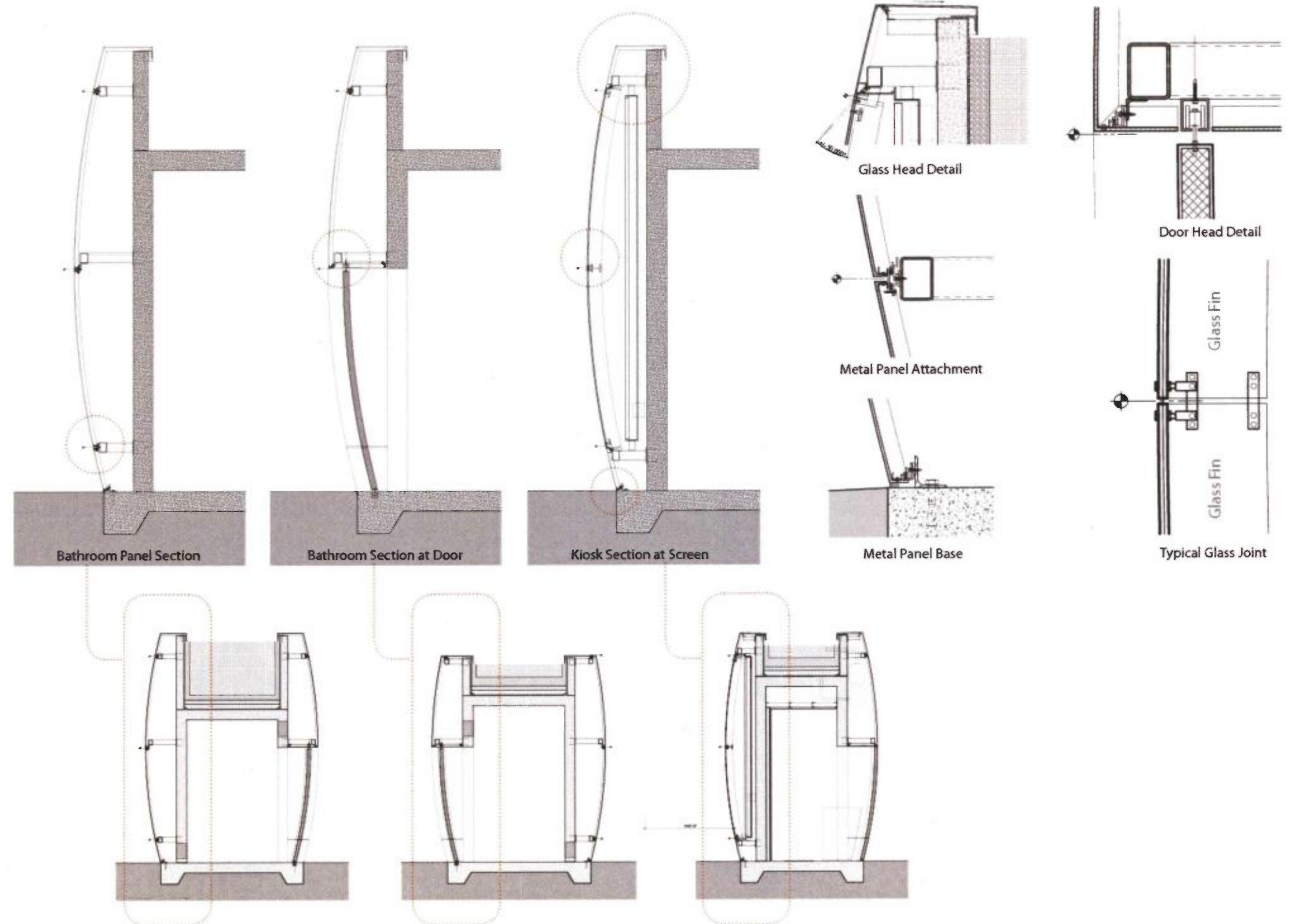
## Legend

- Tree system add-on
- Soil
- Drainage pan
- Iron & concrete bench add-on
- Vortex filter w/micron mesh
- Storage tank & pump
- Gray water system
- Hot-formed metal panel skin
- Sliding track metal door
- Tube steel structure
- Inner concrete shell
- Digital screen



## Constructability

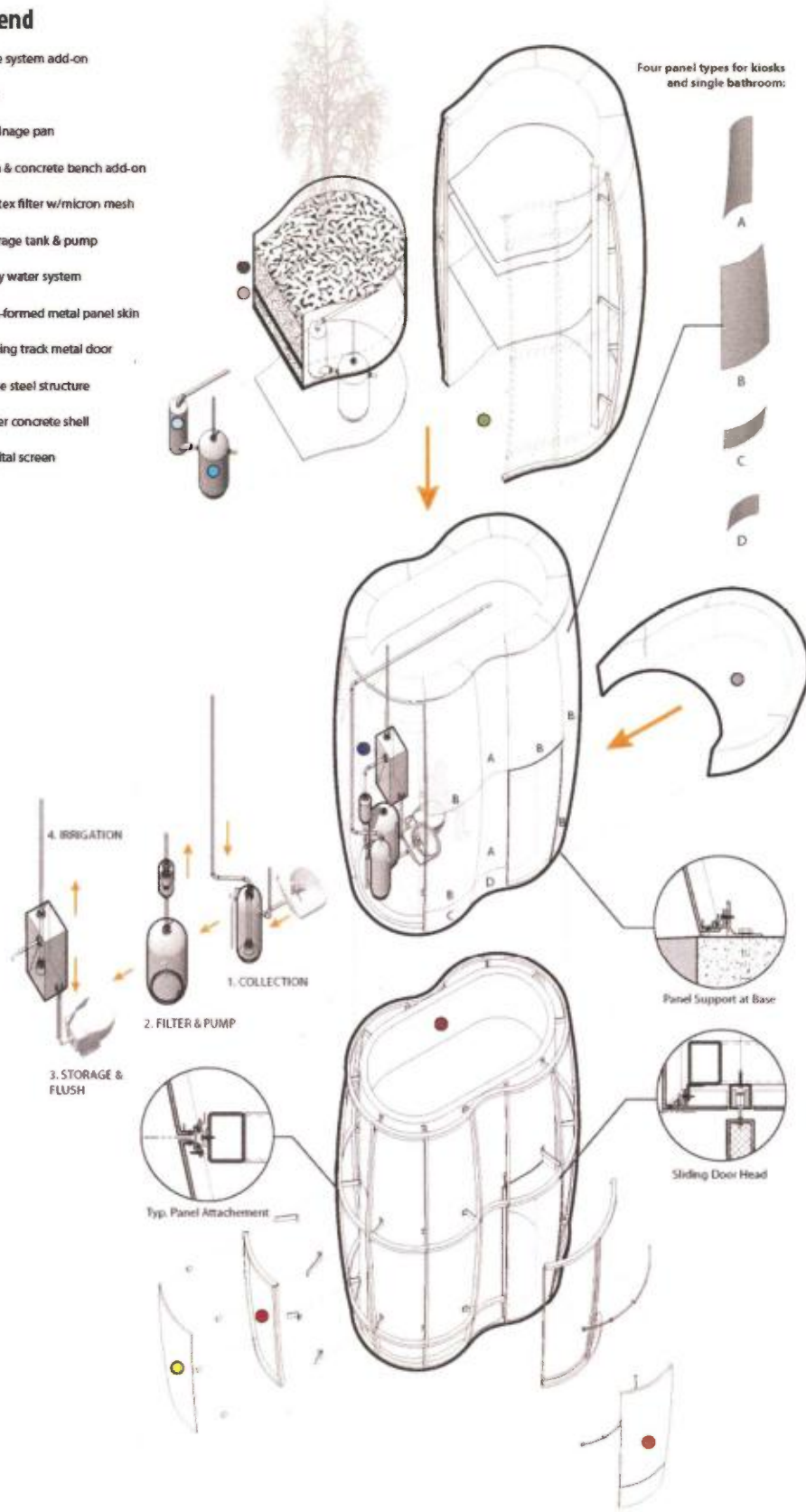
Buildability and longevity lie in the details. The AmeniTREES kiosk details are derived from our past project work.





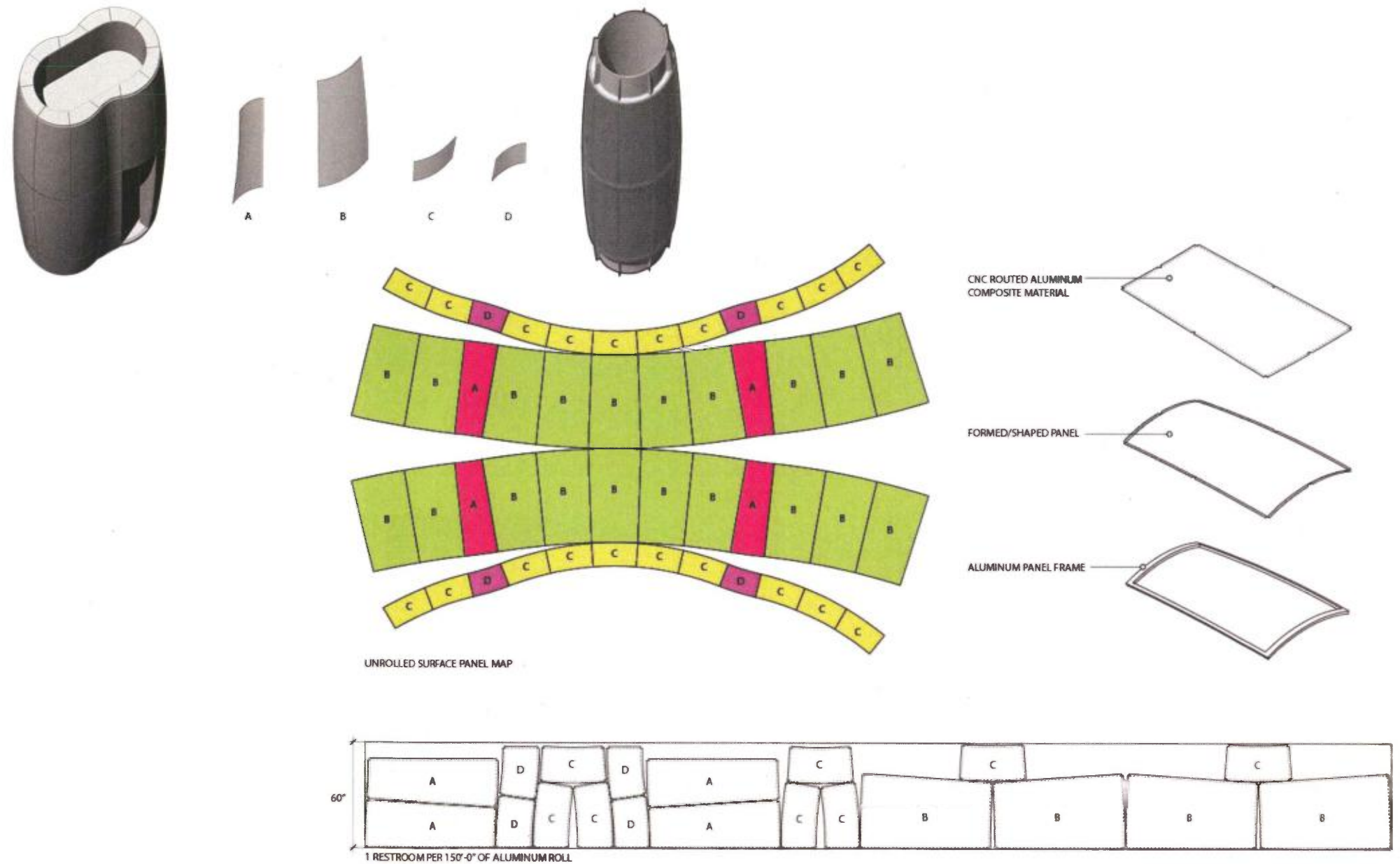
## Legend

- Tree system add-on
- Soil
- Drainage pan
- Iron & concrete bench add-on
- Vortex filter w/micron mesh
- Storage tank & pump
- Gray water system
- Hot-formed metal panel skin
- Sliding track metal door
- Tube steel structure
- Inner concrete shell
- Digital screen



## Maintainability: Optimized Panel Design

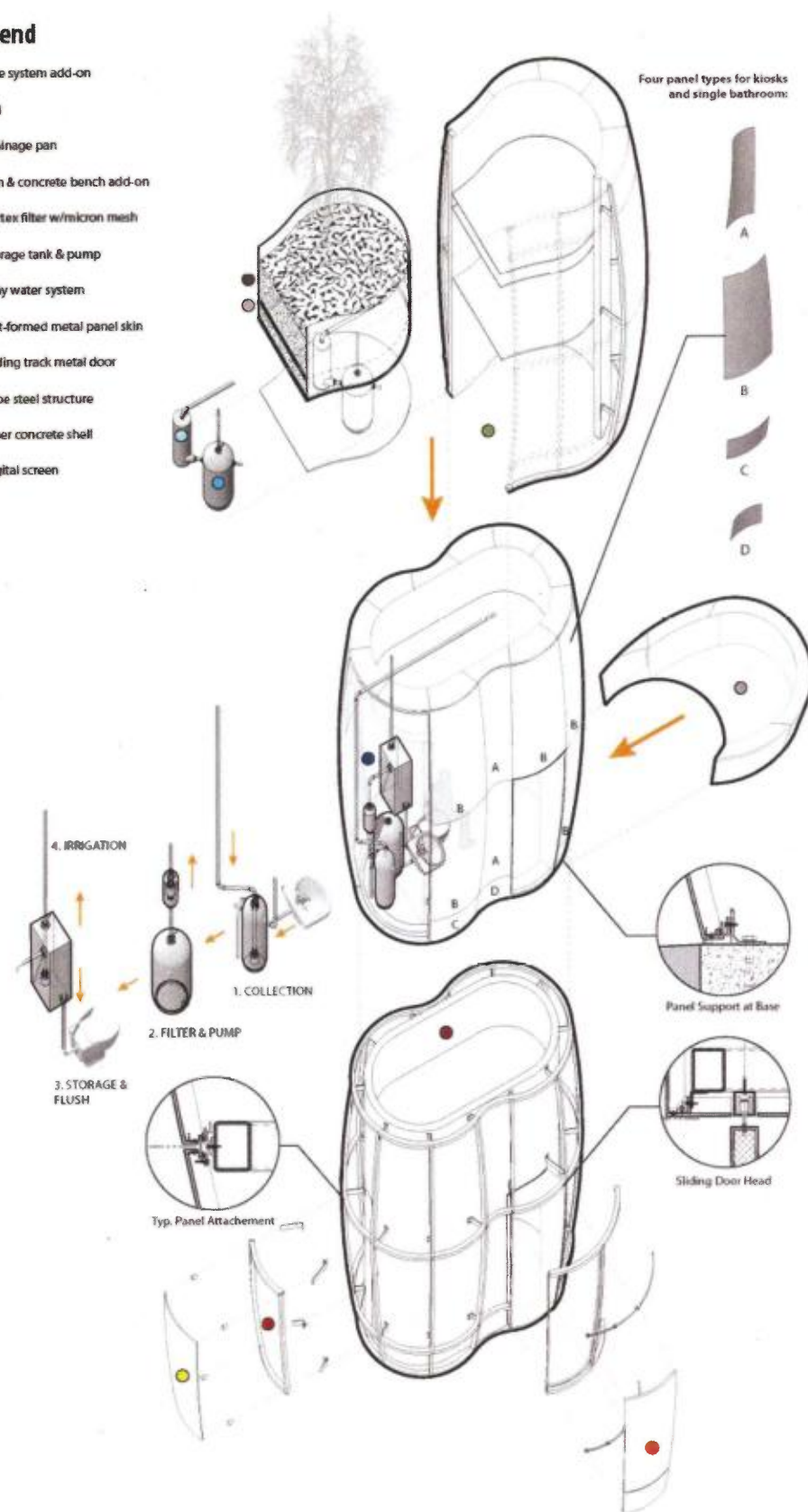
The exterior shell was designed to economize the fabrication process and reduce cost. The single bathroom, retail kiosk and advertisement kiosk can all be assembled with four metal panel types that are rotated around the X and Y axis to create the overall form. Two additional panel types are used to make the double bathroom skin and tree system add-on. These panels can be cast or hot molded and stockpiled for future repairs as needed.





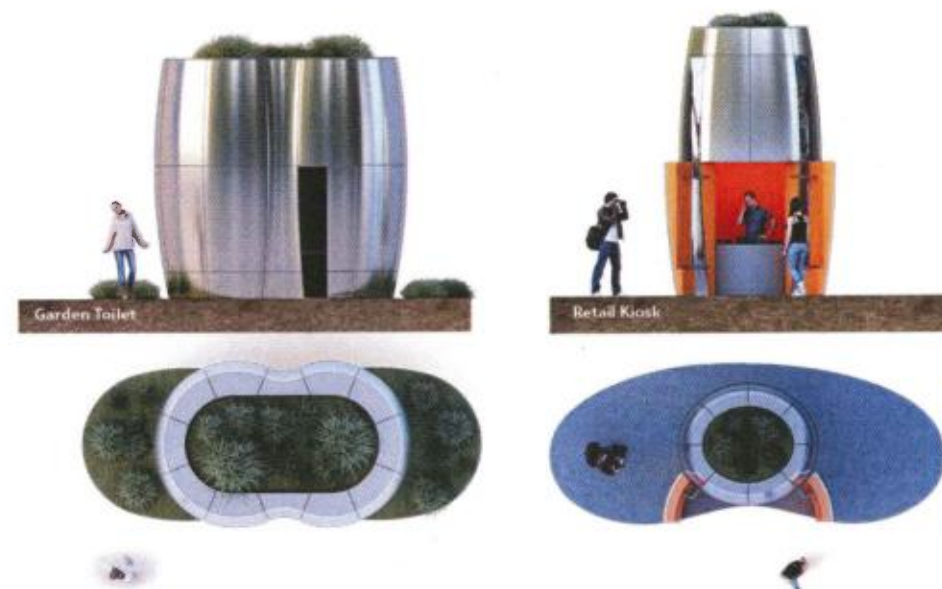
## Legend

- Tree system add-on
- Soil
- Drainage pan
- Iron & concrete bench add-on
- Vortex filter w/micron mesh
- Storage tank & pump
- Gray water system
- Hot-formed metal panel skin
- Sliding track metal door
- Tube steel structure
- Inner concrete shell
- Digital screen



## Durability: Optimized Panel Design

The AmeniTREES kiosks are composed of a small set of durable materials. They are designed to keep in mind the challenges of structures in an urban context. This includes climate, graffiti, and pedestrian access on the street.



Reflective Metal panels



LED - OLED - LCD advertising



Glass shell



Cast Iron base - benches



Painted Metal retail interior



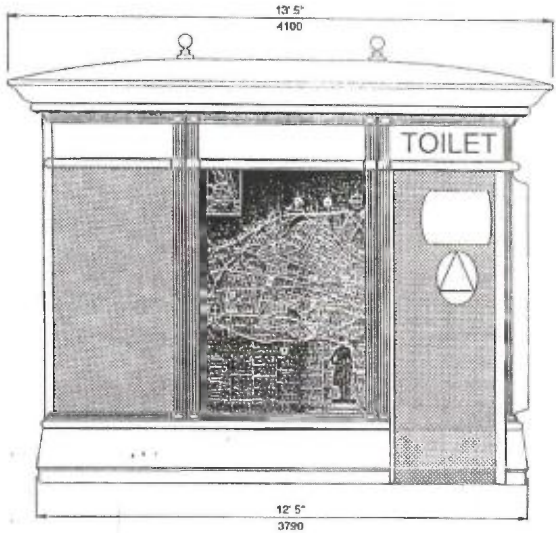
Concrete inner shell



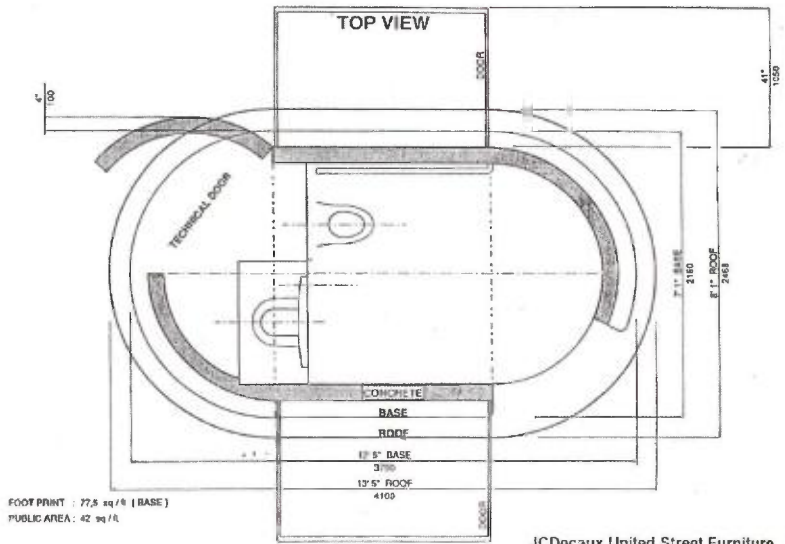
Steel structure



# SAN FRANCISCO'S AmeniTREEs



JCDecaux United Street Furniture  
Copyright 1994



JCDecaux United Street Furniture  
Copyright 1994

## Public Toilets

**Toilet- Option 01.A.1**

Single Occupancy



**Perspective - From Sidewalk**



**Perspective - From Street**

**Toilet- Option 01.A.1**

Single Occupancy



**Elevation - From Sidewalk**

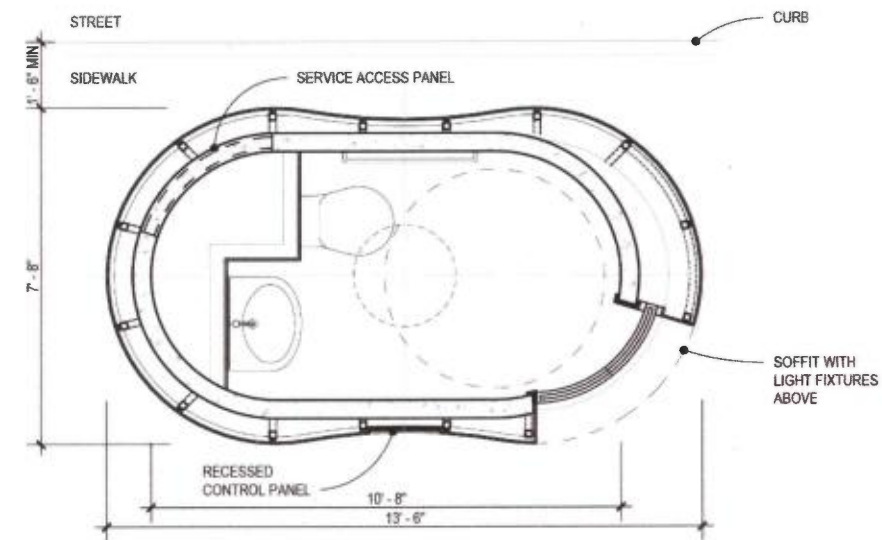


**Elevation - Side**

**Option 01.A.1**

Single occupancy ADA toilet.

Grow bed roof infrastructure installed with unit. Native grass planting to be provided later as a pilot program.



**Plan**



**Toilet- Option 01.A**

Single Occupancy



**Perspective - From Sidewalk**



**Perspective - From Street**

**Toilet- Option 01.A**

Single Occupancy



**Elevation - From Sidewalk**

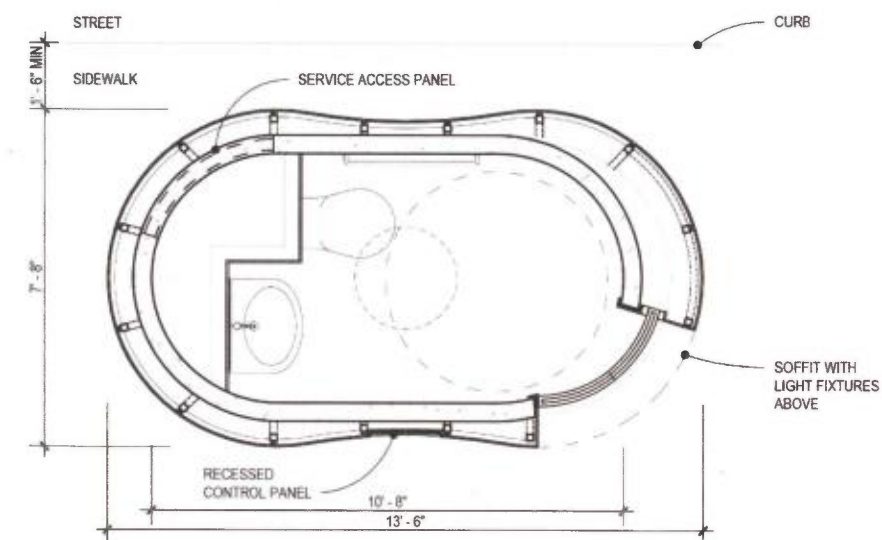


**Elevation - Side**

**Option 01.A**

Single occupancy ADA toilet.

Native grass planting and grow bed integrated with the roof and parapet.



**Plan**

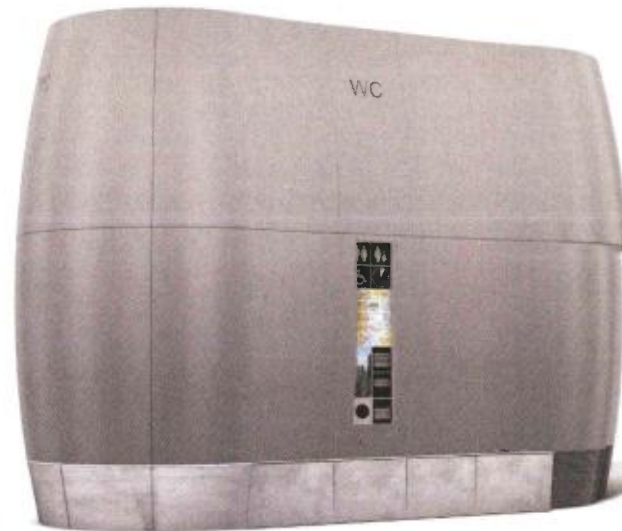


**Toilet- Option 02.A.1**

**Double Stall**



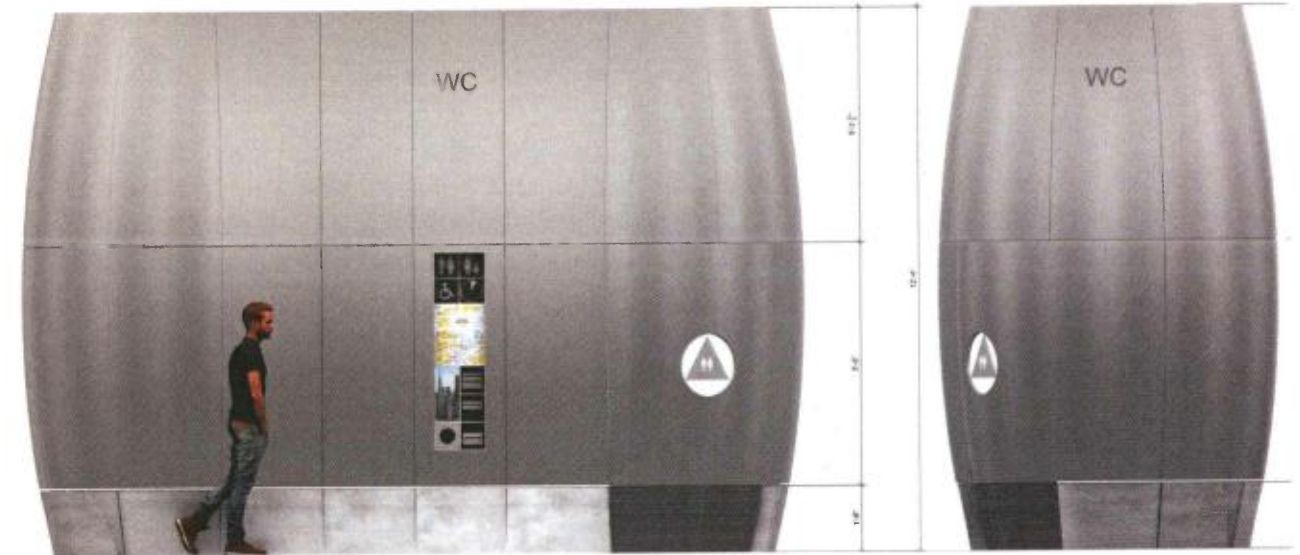
**Perspective - From Sidewalk**



**Perspective - From Street**

**Toilet- Option 02.A.1**

**Double Stall**



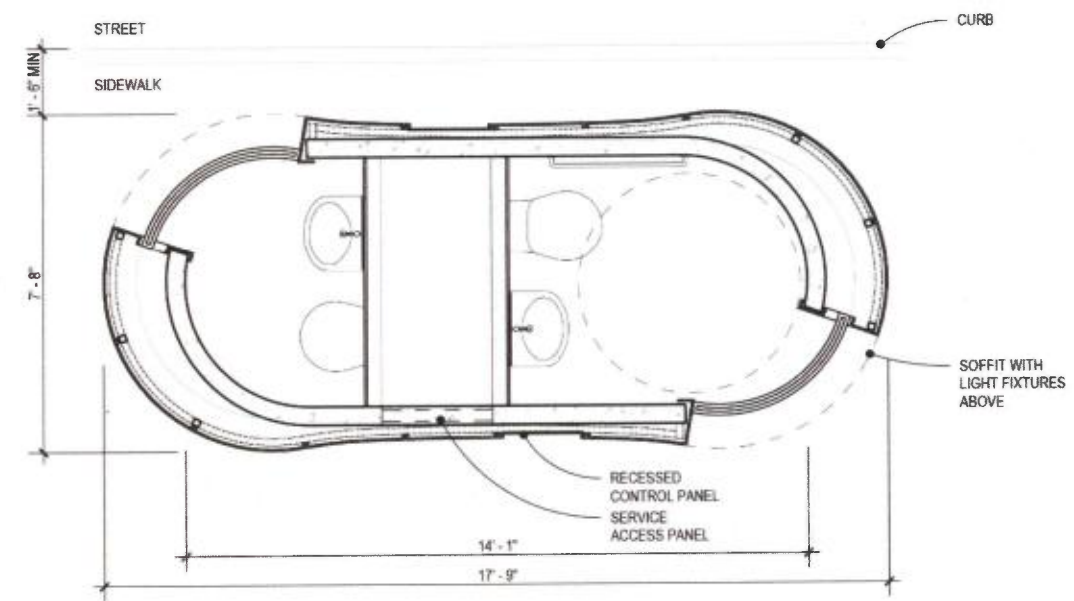
**Elevation - From Sidewalk**

**Elevation - Side**

**Option 02.A.1**

Double stall toilet. One ADA accessible toilet stall. One non-accessible stall.

Grow bed roof infrastructure installed with unit. Native grass planting to be provided later as a pilot program.



**Plan**

**Toilet- Option 02.A**

Double Stall



**Perspective - From Sidewalk**



**Perspective - From Street**

**Toilet- Option 02.A**

Double Stall



**Elevation - From Sidewalk**

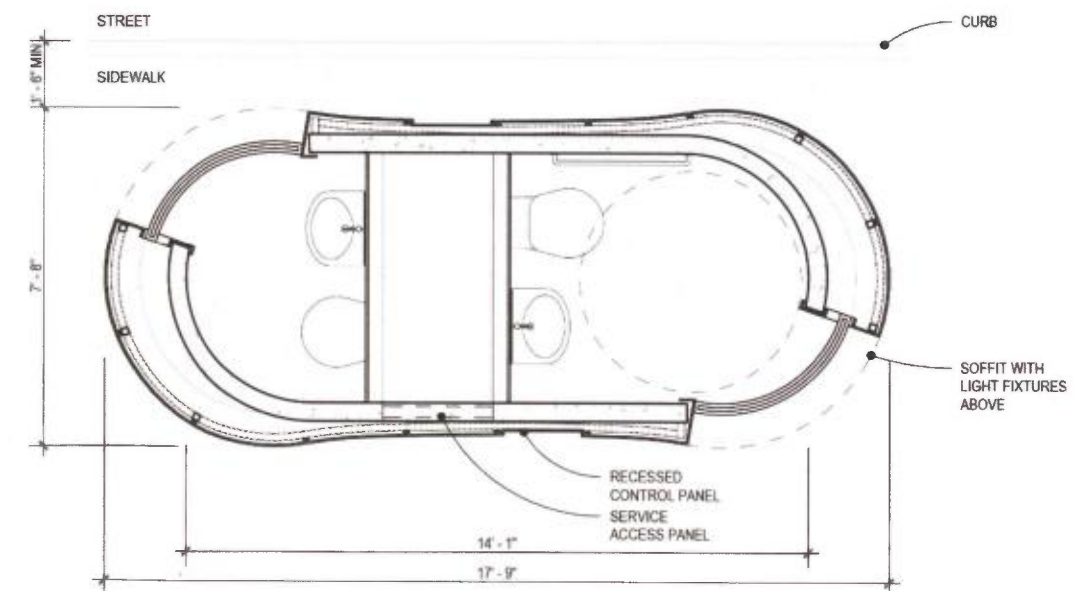


**Elevation - Side**

**Option 02.A**

Double stall toilet. One ADA accessible toilet stall. One non-accessible stall.

Native grass planting and grow bed integrated with the roof and parapet.



**Plan**



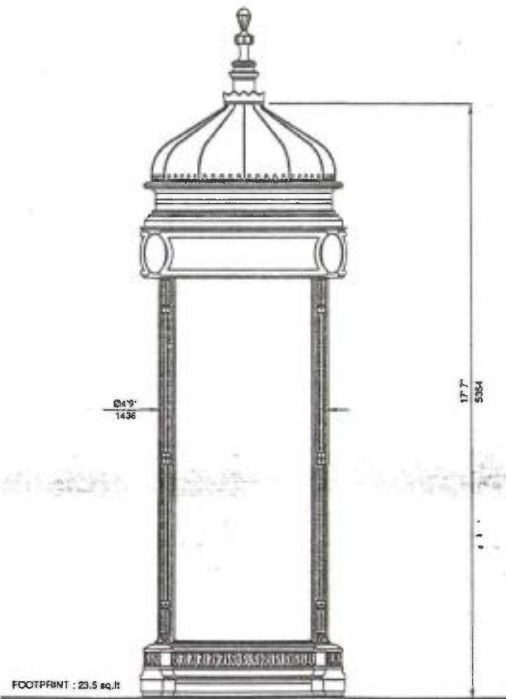




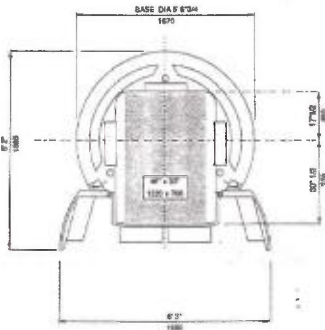
# SAN FRANCISCO'S AmeniTREEs



## Kiosks



JCDecaux United Street Furniture  
Copyright 1994



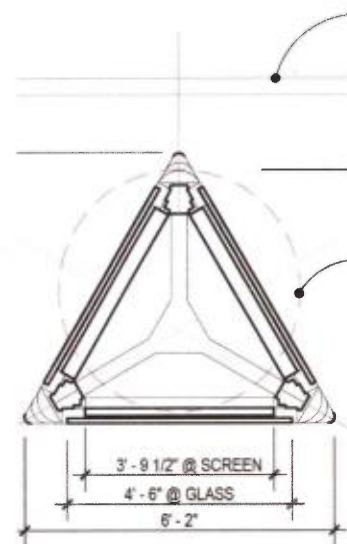
NEWSSTAND KIOSK

JCDecaux United Street Furniture  
Copyright 1994

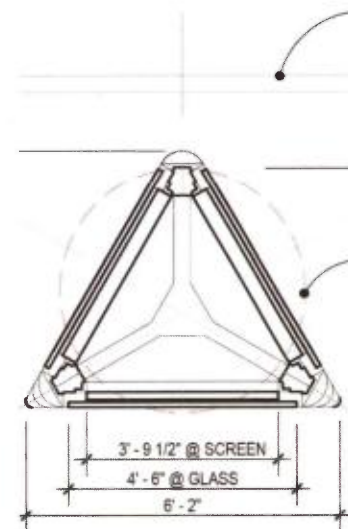
## Kiosk - Options



Option - 01.C



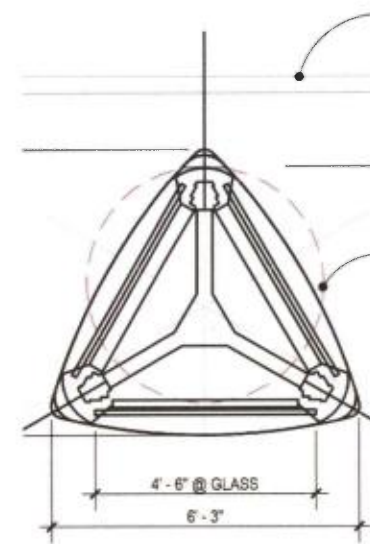
Option 01.C.1



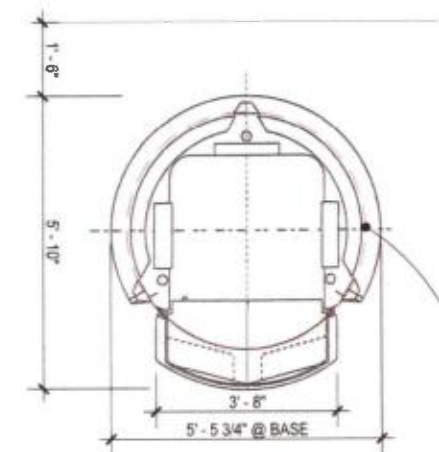
## Kiosk - Options



Option 02.C



Existing Kiosk





Kiosk - Option 01.C

Flat Glass



Perspective - From Sidewalk

Perspective - From Street

Kiosk - Option 01.C

Flat Glass



Elevation - From Street

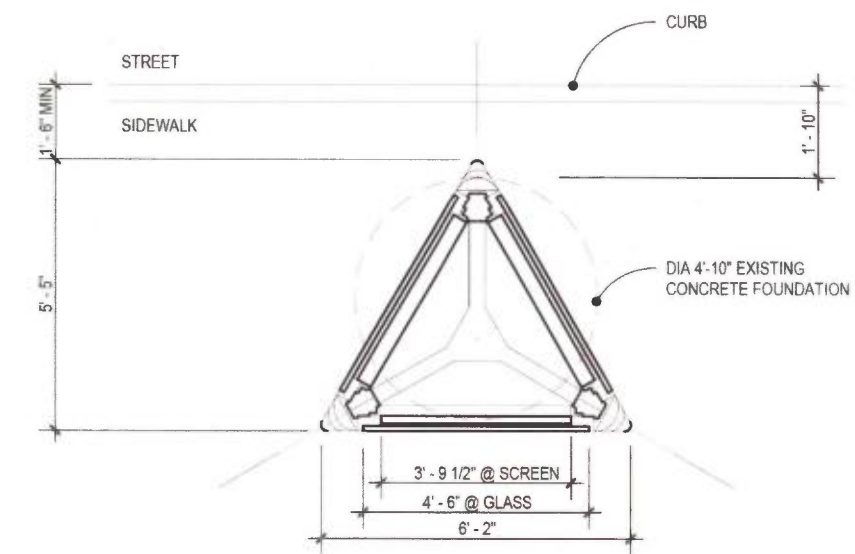
Elevation - Side

Elevation - From Sidewalk

### Option 01.C

Kiosk shell fits pre-engineered metal frame. Glass is flat.

Digital screen is consistent with the pre-engineered system. Glass width increases, which would require modifications to frame extrusions, and a break shape transition or alternate material behind the glass.



Plan

Kiosk - Option 01.C.1

Flat Glass



Perspective - From Sidewalk

Perspective - From Street

Kiosk - Option 01.C.1

Flat Glass



Elevation - From Street

Elevation - Side

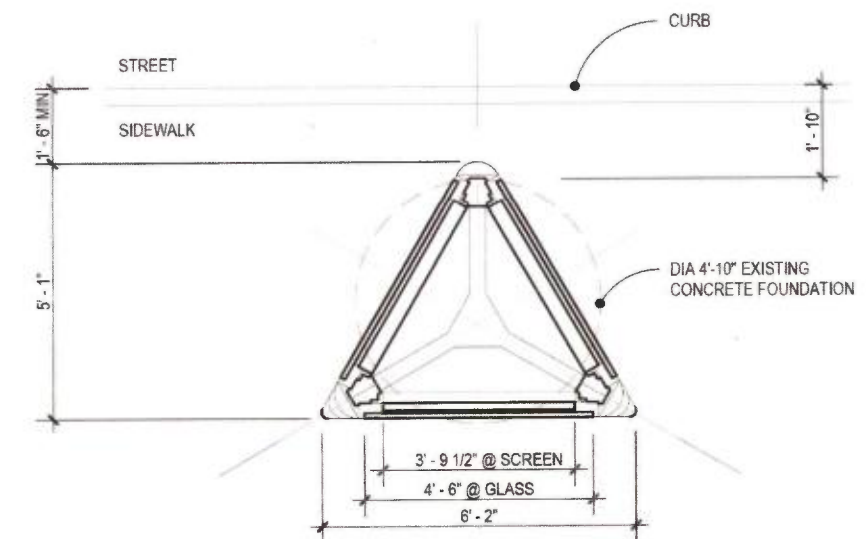
Elevation - From Sidewalk

#### Option 01.C.1

Kiosk shell fits pre-engineered metal frame. Glass is flat.

Digital screen is consistent with the pre-engineered system. Glass width increases, which would require modifications to frame extrusions, and a break shape transition or alternate material behind the glass.

The two corners that face the pedestrian right of way have a doubly curved surface made with two different size radii. The corner that faces the street is a singly curved surface with one size radii.



Plan



Kiosk - Option 02.C

Curved Glass



Perspective - From Sidewalk

Perspective - From Street

Kiosk - Option 02.C

Curved Glass



Elevation - From Street

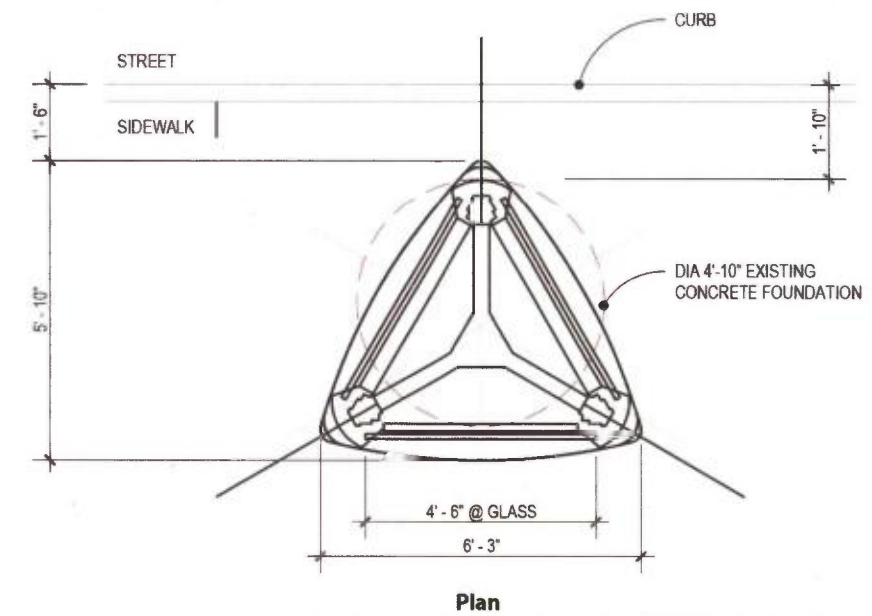
Elevation - Side

Elevation - From Sidewalk

### Option 02.C

Kiosk shell fits pre-engineered metal frame. Glass is curved in one direction.

Digital screen is consistent with the pre-engineered system. Glass width increases, which would require modifications to frame extrusions, and a break shape transition or alternate material behind the glass.



Plan



# SAN FRANCISCO'S AmeniTREEs



SMITHGROUP JJR