



WESTERN SHORELINE AREA PLAN COASTAL HAZARD AMENDMENTS

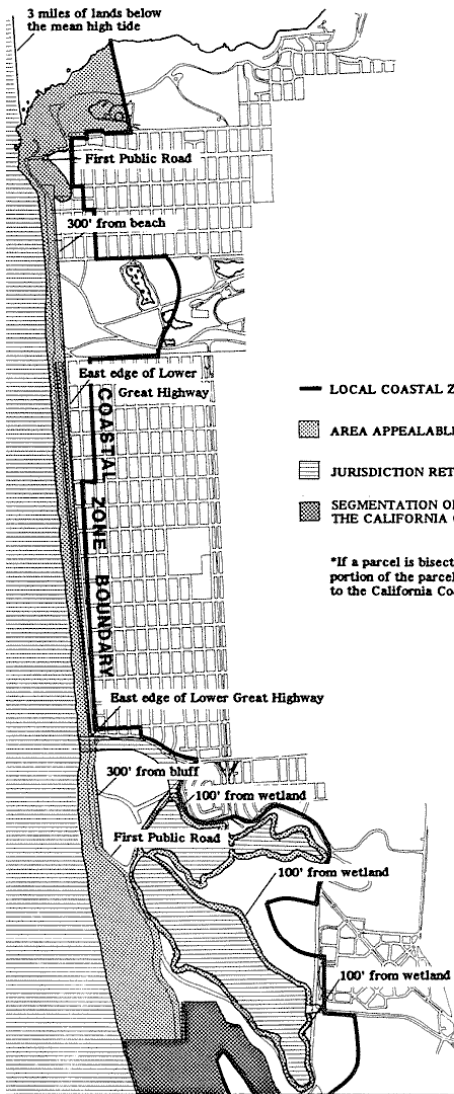
Maggie Wenger and Chris Kern

Western Shoreline Area Plan/10.05.17/ Planning Commission



**San Francisco
Planning**

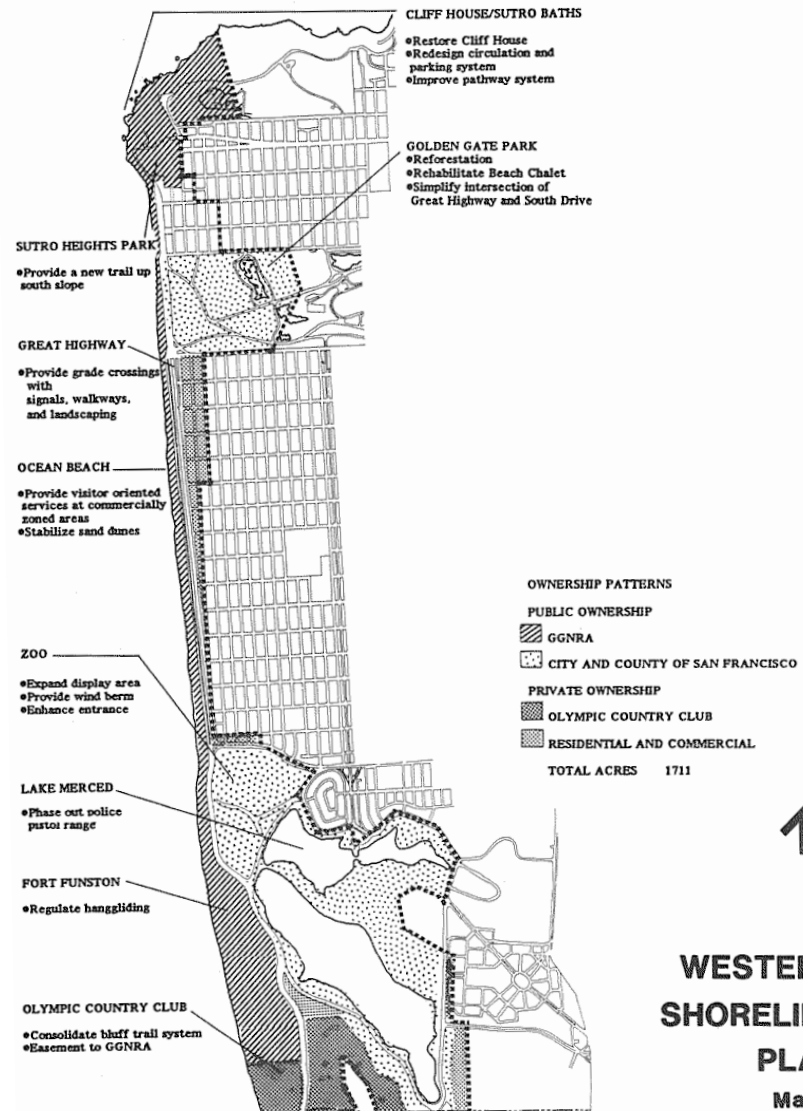
Current Western Shoreline Area Plan-Adopted in 1986



↑

COASTAL ZONE AREA

Map 1



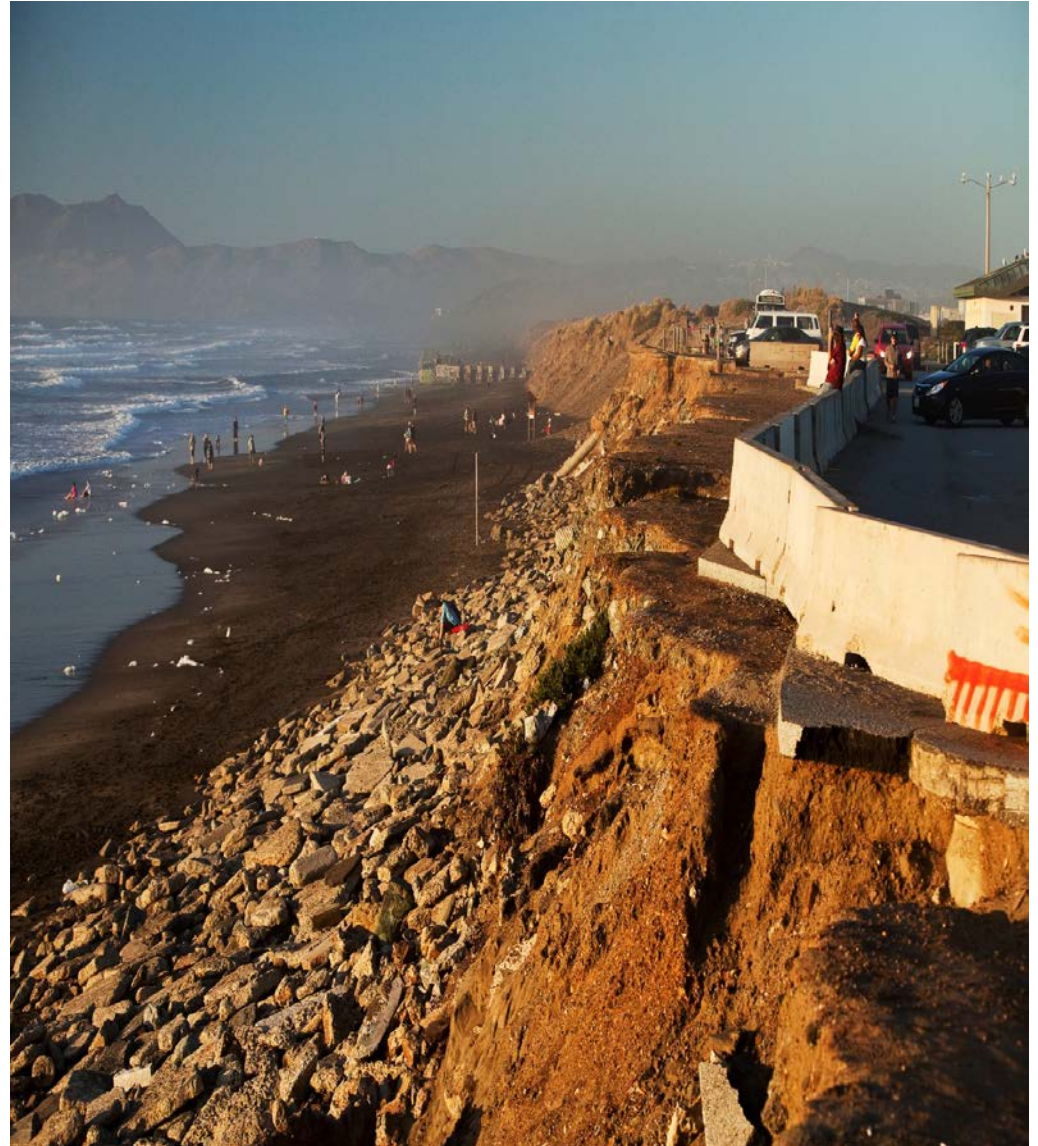
↑

WESTERN SHORELINE PLAN

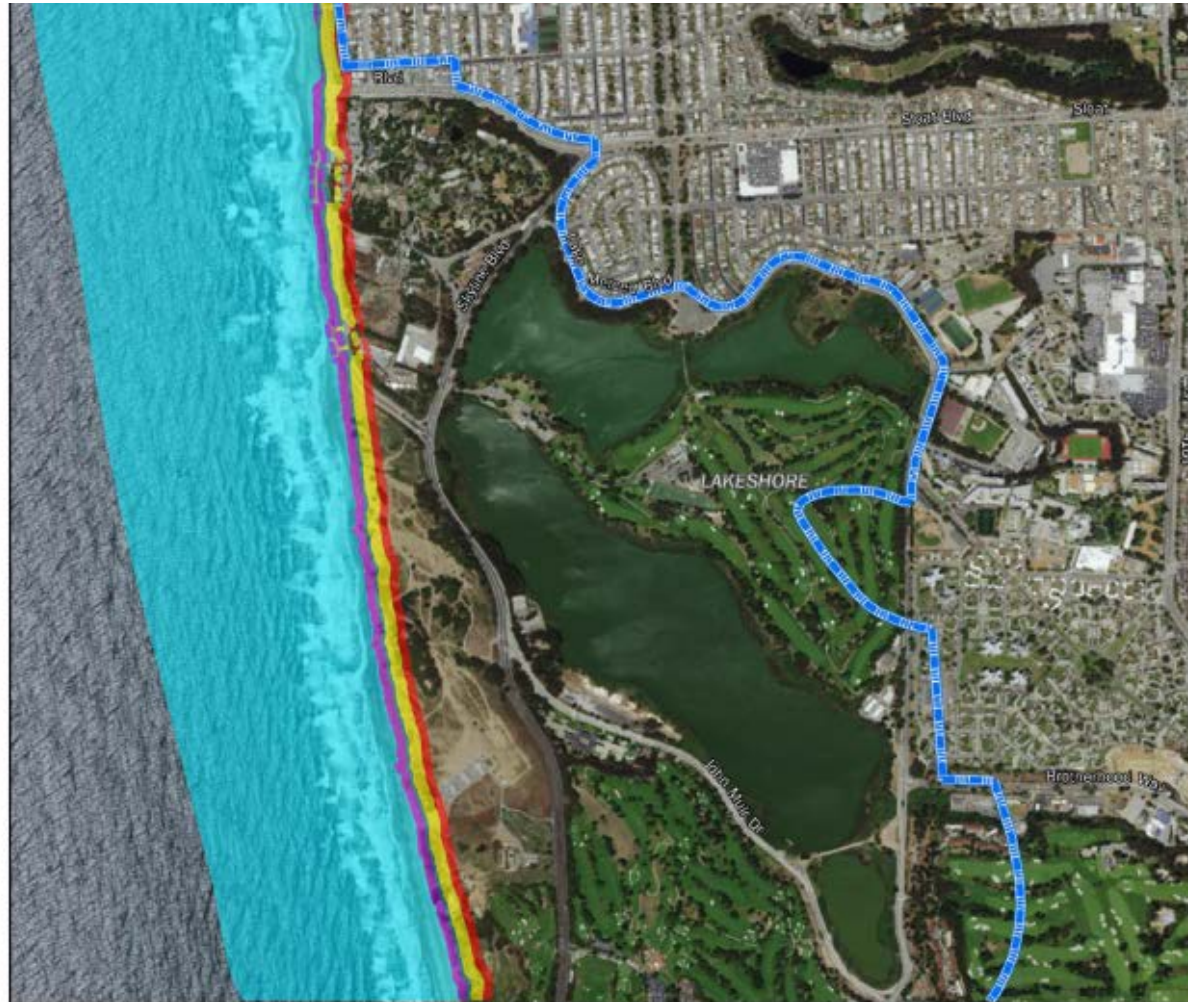
Map 2

South Ocean Beach Erosion

- Winter 2010 storm caused 40 feet of bluff erosion and closed the Great Highway for 10 months
- Sand Bypass permitted until 2021
- Parking lot removal as erosion continues
- Ten years of collaborative planning through the City and SPUR to identify solutions that balance infrastructure protection, recreation, and coastal resources



Sea Level Rise Projections and Mapping



San Francisco Local Coastal Program Amendment Sea Level Rise Hazard Zones

 Coastal Zone Boundary



0 1,000 2,000 3,000 Feet

Page 2 of 2

Increased Inundation Areas

-  Special Flood Hazard Area (SFHA)
-  SFHA with 12" SLR
-  SFHA with 24" SLR
-  SFHA with 36" SLR
-  SFHA with 66" SLR

Note: Dashed inundation lines indicate the potential landward limit of the SFHA along reaches currently protected by coastal armoring structures such as seawalls and revetments if the structures were to be removed or fail.

New Coastal Hazards Section

Objective: Preserve, enhance, and restore the Ocean Beach shoreline while protecting public access, scenic quality, natural resources, critical public infrastructure, and existing development from coastal hazards.

Policy 12.1. Adopt Managed Retreat Adaptation Measures Between Sloat Boulevard and Skyline Drive.

Policy 12.2. Develop and Implement Sea Level Rise Adaptation Plans for the Western Shoreline.

Policy 12.3. Develop and Implement a Beach Nourishment Program to Sustain Ocean Beach.

Policy 12.4. Develop the Shoreline in a Responsible Manner.

Policy 12.5. Limit Shoreline Protection Devices.

Policy 12.6. Minimize Impacts of Shoreline Protection Devices.

Amendment Timeline



Amendment Process

- Three public meetings plus visits to community groups
- Four Community Advisory Group meetings
- Five Interagency Committee meetings
- Ten meetings with Coastal Commission/Ocean Protection Council staff
- Planning Commission Initiation and Adoption
- Board of Supervisors
- Mayor
- Coastal Commission
- Possible return to Planning Commission with suggested modifications



THANK YOU



**San Francisco
Planning**

Maggie Wenger
Citywide Planner
San Francisco Planning
Maggie.Wenger@sfgov.org

Chris Kern
Environmental Planner
San Francisco Planning
Chris.Kern@sfgov.org

www.sfplanning.org