



# SAN FRANCISCO PLANNING DEPARTMENT

**MEMO**

## Memo to the Planning Commission

**DATE:** June 13, 2019  
**TO:** Planning Commission  
**FROM:** Doug Johnson, (415) 575-8735, [doug.johnson@sfgov.org](mailto:doug.johnson@sfgov.org)  
Tam Tran, (415) 575-8716, [tam.tran@sfgov.org](mailto:tam.tran@sfgov.org)  
Celina Chan, (415) 575-9171, [celina.chan@sfgov.org](mailto:celina.chan@sfgov.org)  
**RE:** Connect SF – Statement of Needs

1650 Mission St.  
Suite 400  
San Francisco,  
CA 94103-2479

Reception:  
**415.558.6378**

Fax:  
**415.558.6409**

Planning  
Information:  
**415.558.6377**

### BACKGROUND

To define the desired and achievable transportation future for San Francisco, the Planning Department, San Francisco County Transportation Authority (SFCTA), and San Francisco Municipal Transportation Agency (SFMTA) are collaborating on ConnectSF, the San Francisco Long-Range Transportation Planning Program. Additional program partners include the Office of Economic and Workforce Development (OEWD) and the Mayor's Office.

The efforts of the ConnectSF program will achieve the following:

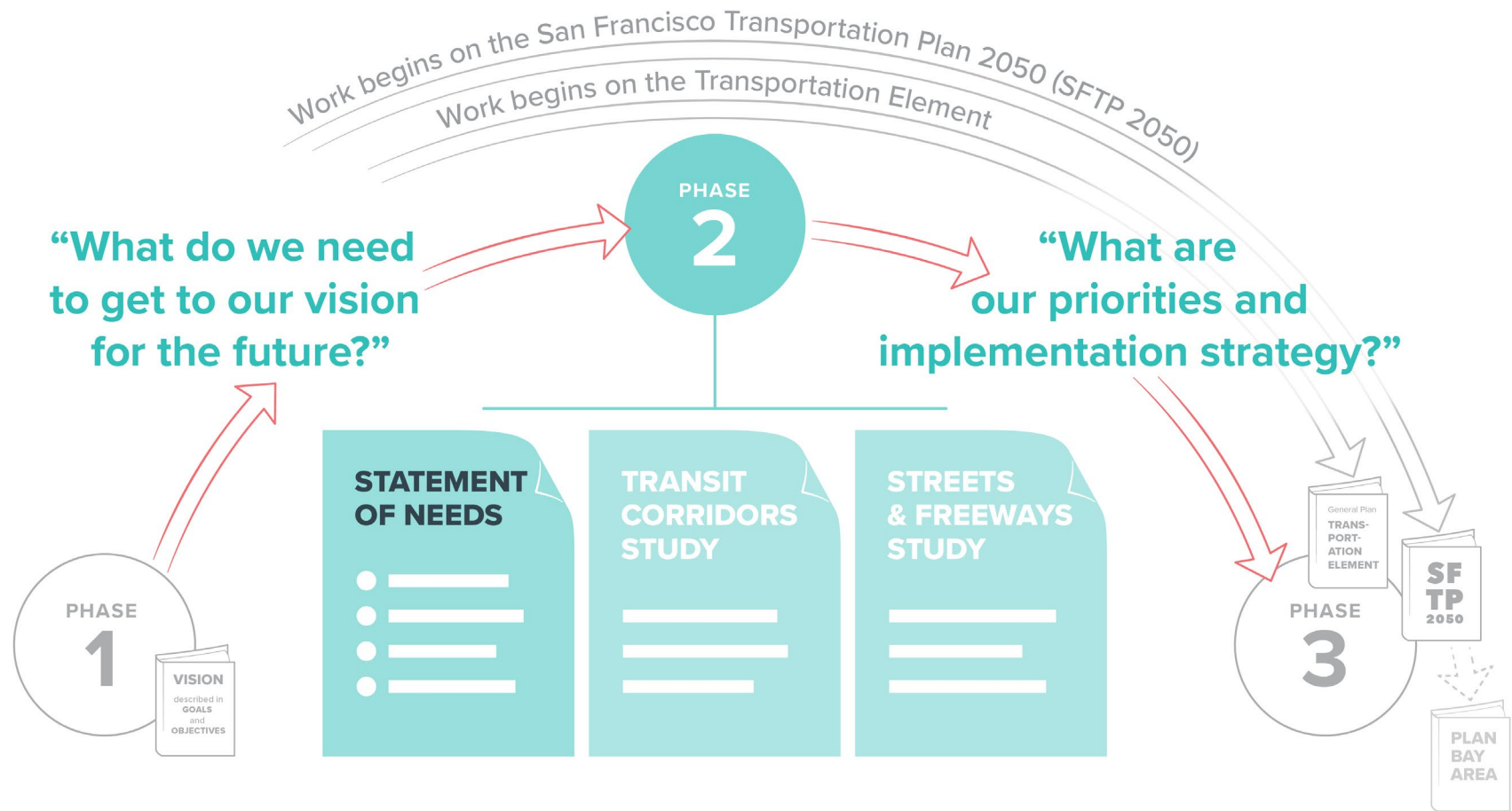
- Serve as San Francisco's long-range transportation planning program, integrating multiple priorities for all modes based on robust technical analysis and public engagement.
- Create a common vision for the future that will result in common goals and objectives that subsequent efforts work to achieve.
- Identify and prioritize long-term transit strategies and investments to support sustainable growth.
- Develop a revenue strategy for funding priorities.
- Establish a joint advocacy platform, including policy and project priorities.
- Guide San Francisco's inputs into the Regional Transportation Plan/Sustainable Communities Strategy update.
- Codify policies and projects in the City's General Plan by producing a new Transportation Element and updating the city's Countywide Transportation Plan.

The overall outcome of the ConnectSF program is a comprehensive plan for the next generation of major transportation investments and policies needed to build an efficient, effective, and transparent way. The program is composed of distinct, sequential efforts, as summarized in Figure 1.

### ABOUT THE VISION

ConnectSF's 2065 Vision was collaboratively developed with the community, the program's Futures Task Force, and leadership from City agencies. The focal question of the vision-building process was, "what is the future of San Francisco as a place to live, work, and play in the next 30 and 50 years?"

Figure 1. ConnectSF Transportation Planning Program



**Memo to Planning Commission**  
**Hearing Date: June 13, 2019**

Briefly, the Vision is one where San Francisco is a growing, diverse, equitable city. There is a multitude of transportation options that are available and affordable to all. And there is faster project delivery resulting from strong civic and government engagement. The Vision will serve as the framework for how the City will make transportation decisions and investments to achieve the type of city that we want to have in the future.

Staff first presented the draft Vision to the Planning Commission on March 1, 2018. The final Vision was endorsed by the Planning Commission on April 19, 2018.

## **ABOUT THE STATEMENT OF NEEDS**

After the development of the Vision, the ConnectSF program team assessed what needs to happen to help the City achieve the Vision. The Statement of Needs outlines San Francisco's transportation needs in order to move in the direction of the Vision. If we want to reach the Vision, then we need to understand the baseline performance to identify gaps and deficiencies the City has to close to reach the preferred future. Our assessment shows that there are areas where we are making progress and identifies major challenges that need to be addressed in ConnectSF's studies, which start this summer.

To do this, the ConnectSF team used SFCTA's travel model to assess how the transportation system may perform in 2050 compared to the baseline year of 2015. This analysis was conducted based on land use assumptions from the Planning Department and transportation projects currently in adopted long-range planning documents. The team developed metrics to understand the transportation system's performance, such as modes of travel, vehicle miles traveled, congestion, and others. Data visualizations for key metrics can be found on the ConnectSF website ([www.connectSF.org/about/transportation-needs](http://www.connectSF.org/about/transportation-needs)).

The Statement of Needs tells us whether we are moving in the direction of the Vision and where we are falling short.

Staff presented findings from the Statement of Needs to the SFMTA Board and SFCTA Board at their meetings on May 21, 2019, and June 4, 2019, respectively. Staff hosted webinars in early June to present the Statement of Needs and answer questions with ConnectSF's Futures Task Force. This group has been involved with the program since Phase 1 and consists of community-based organizations; business groups; transportation providers; and local and regional agency staff. Staff will also make presentations to community and neighborhood groups in June and July 2019. Community groups can also request a presentation. The full Statement of Needs report will be completed by the end of summer 2019.

## **NEXT STEPS**

The ConnectSF program team is finalizing procurement steps that will lead to the activation of the Transit Corridors Study and Streets and Freeways Study. Staff anticipates the following timeline for the rest of ConnectSF's Phase 2 work, which will include regular presentations to the Planning Commission, SFMTA Board, and SFCTA Board.

- Spring 2019 – Fall 2020 San Francisco Transportation Plan (SFTP) 2050
- Spring 2019 – Summer 2021 Transit Corridors Study; Streets and Freeways Study
- Summer 2019 – Winter 2021 Transportation Element of the General Plan